



# Panasonic ARC ES-LT3N Power Button Replacement

Replace your power button and bring back efficient performance to your Panasonic ARC ES-LT3N

Written By: Andrew Trainor



---

## INTRODUCTION

This repair guide will show you the best step by step procedure of how to replace your power button in your Panasonic ARC ES-LT3N. The process is fairly easy and you only need a one tool!

---

### **TOOLS:**

- [Phillips #00 Screwdriver](#) (1)
-

## Step 1 — Back Casing



- Flip the razor over so the back is facing you.

## Step 2



- Using a Phillips #00 screwdriver, remove the 6 mm screw just above the charger port.

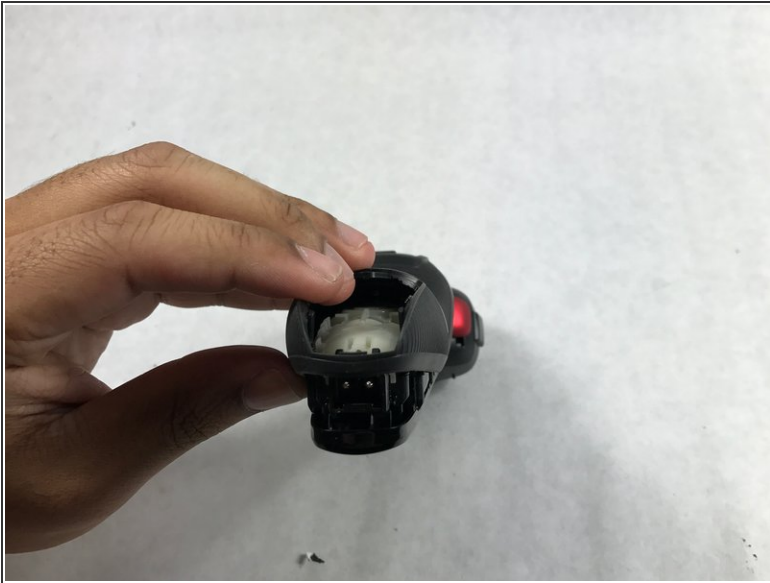
## Step 3



- Slide the plastic cover at the bottom of the razor downward to remove.

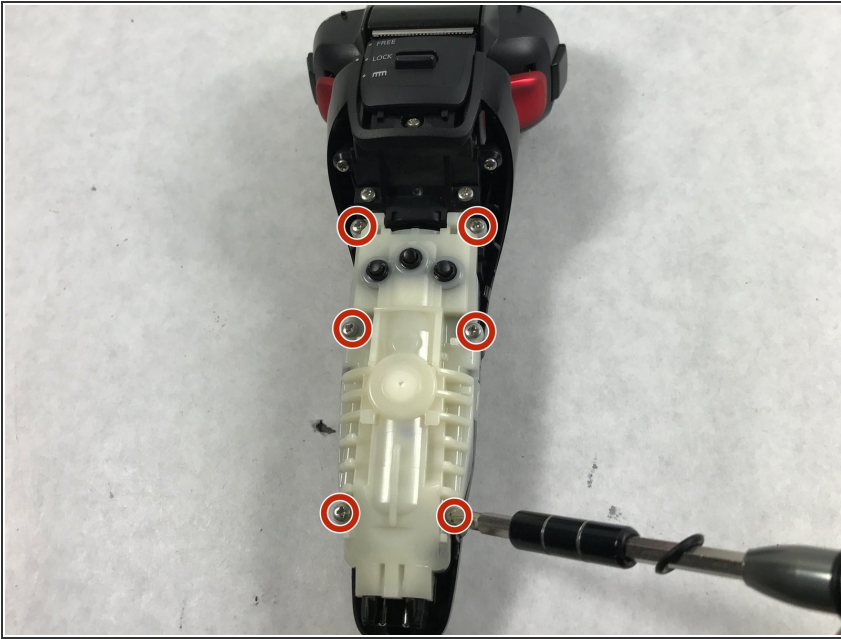


## Step 4



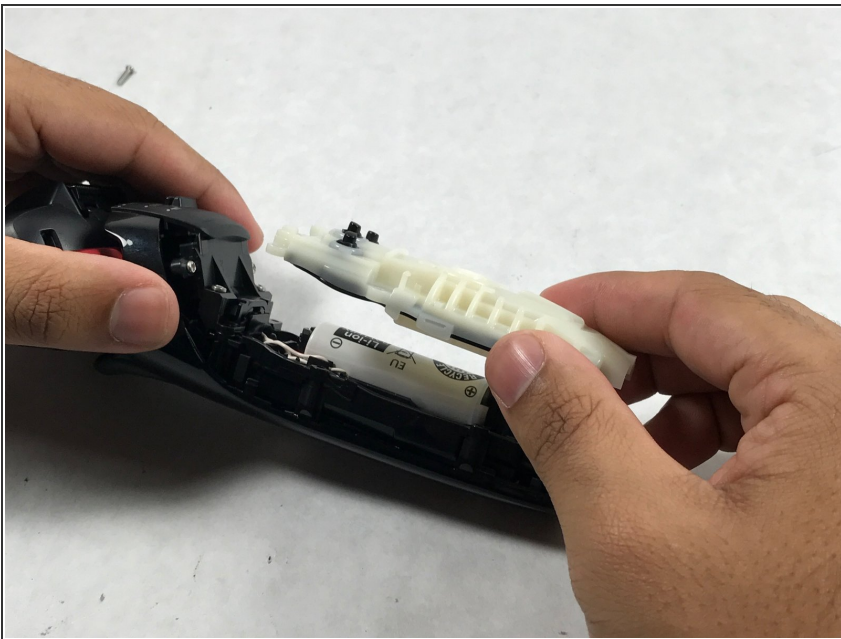
- Lift up the rear casing from the bottom of the razor.
  - ⓘ This may require you to gently pry it apart with you fingers.
  - Lift up the rear casing from the sides of the razor.
  - Pull rear casing up and off razor.
- ⚠ Be careful not to break any plastic!

## Step 5 — Battery



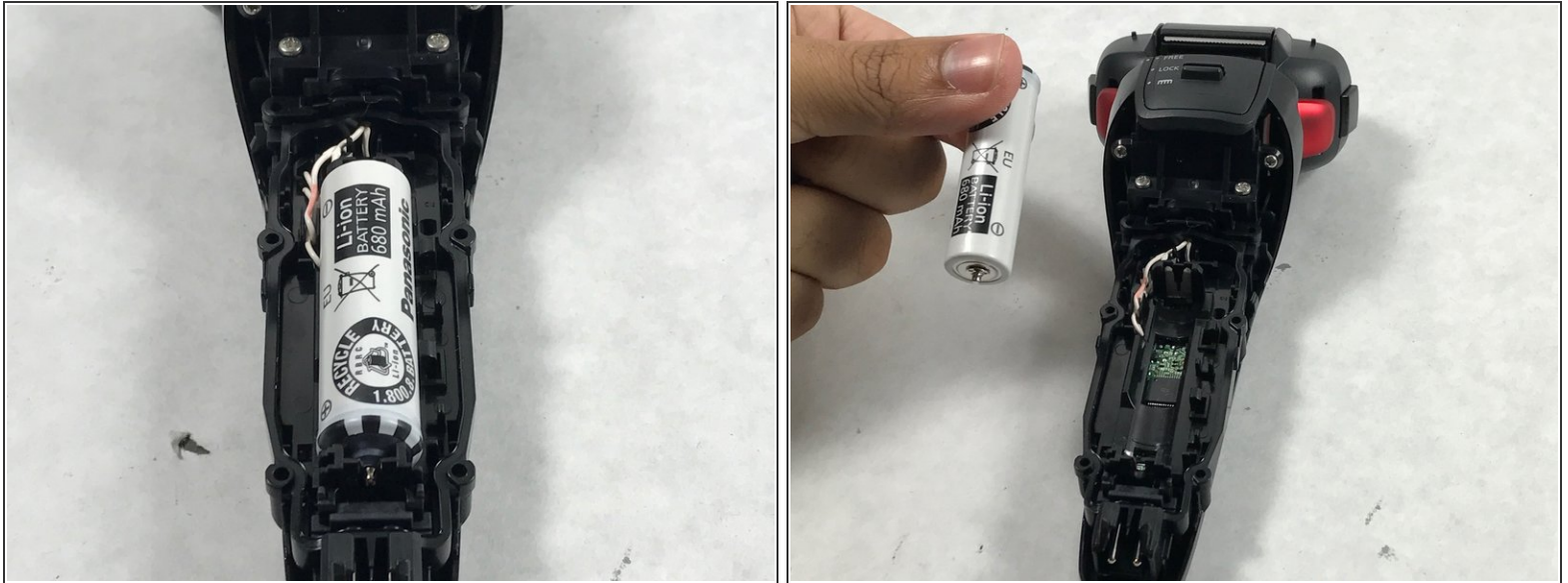
- Using the Phillips 00 driver bit, remove six screws (12mm) from the battery case.

## Step 6



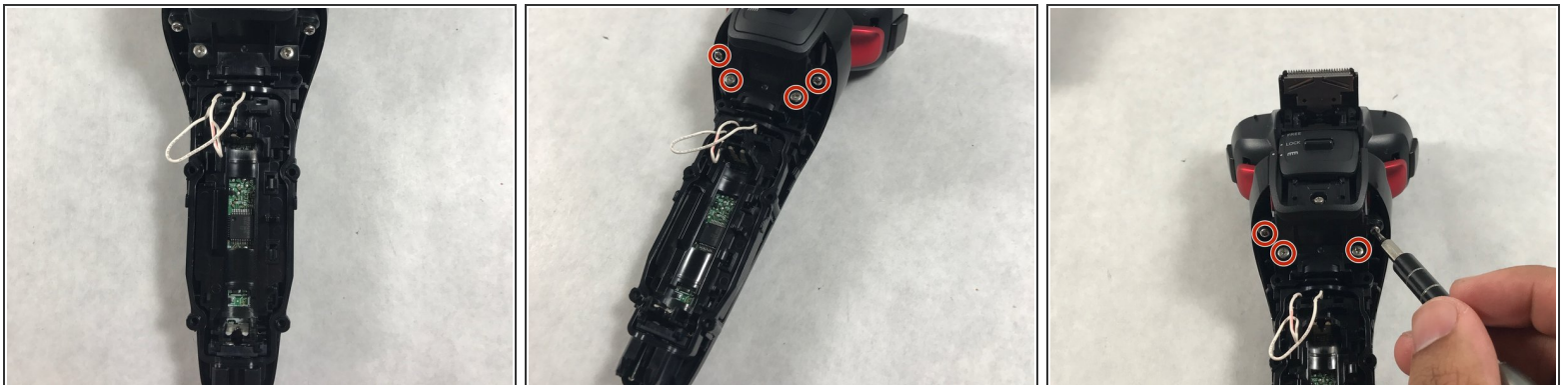
- Remove battery case.

## Step 7



- Remove old battery by lifting the battery up and left.
- ⓘ There are plastic brackets holding the battery on the right. Removing up and left ensures that the brackets will not be damaged and the battery will not come loose.

## Step 8 — Power Button



- Remove the 8 mm screws directly below the lock switch.

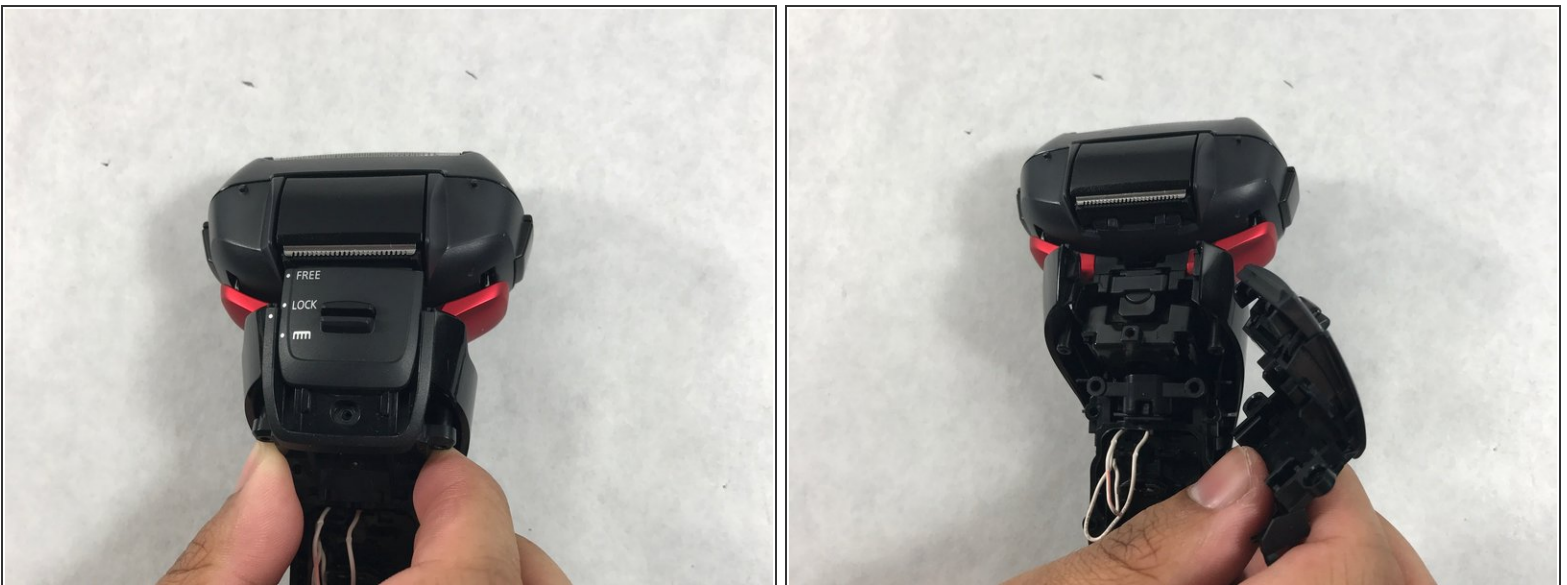


## Step 9



- Push the lock switch upward and remove the 6 mm screw hidden beneath.

## Step 10



- Remove the lock switch by sliding it downward until it is out of place.



## Step 11



- Starting from the bottom, lift the front casing upward to separate the case from the device.
- Continue to lift the device upward until you can pull the casing off.
- ⓘ It may take some wiggling or slight bending of the plastic to remove all the way.

## Step 12



- Remove the button.

To reassemble your device, follow these instructions in reverse order.