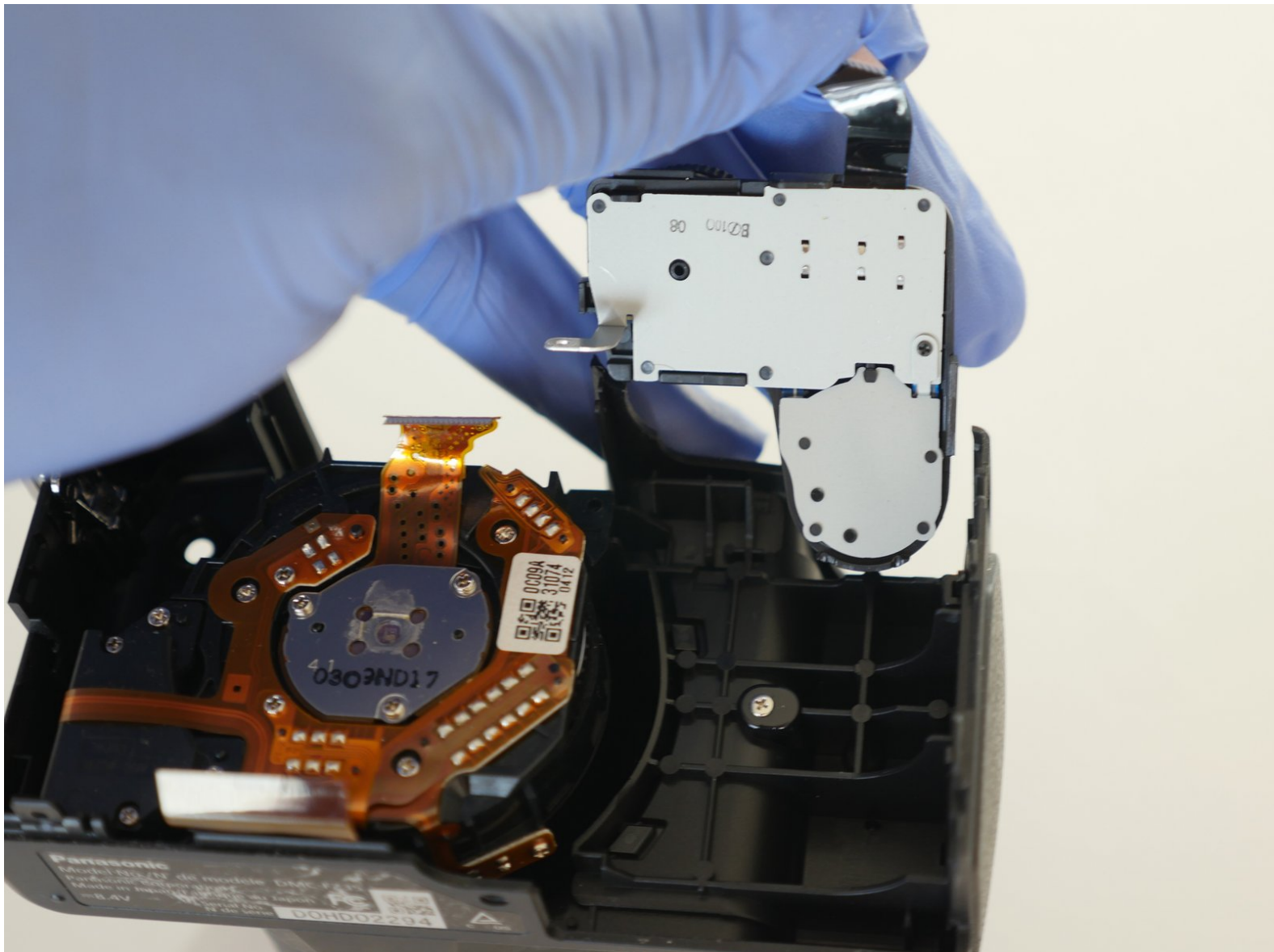




Panasonic DMC-FZ35 Top Control Panel Replacement

Panasonic DMC-FZ35 Top Control Panel Replacement

Written By: Sales Cameraparts4you



INTRODUCTION

Panasonic DMC-FZ35 Top Control Panel Replacement



TOOLS:

- [Phillips PH000 Screwdriver](#) (1)
- [Small Plastic Spudger](#) (1)



PARTS:

- [Panasonic Lumix DMC-FZ35 LCD Display Screen VYQ5034](#) (1)
- [Panasonic Lumix DMC-FZ35 Main Board PCB VEP56091A](#) (1)
- [DMC-FZ35 Lumix Top Panel K0RB02100007](#) (1)

Step 1 — Clear compartment



- Remove the battery and memory card from the unit.

Step 2 — Remove side screws



- Remove 1 screw (0.4mm) from left side of unit
- Remove 1 screw (0.4mm) from right side of unit near Strap bar.
- Remove 1 screw (0.6mm) from right side of unit next to usb door

Step 3 — Remove Screws from Bottom



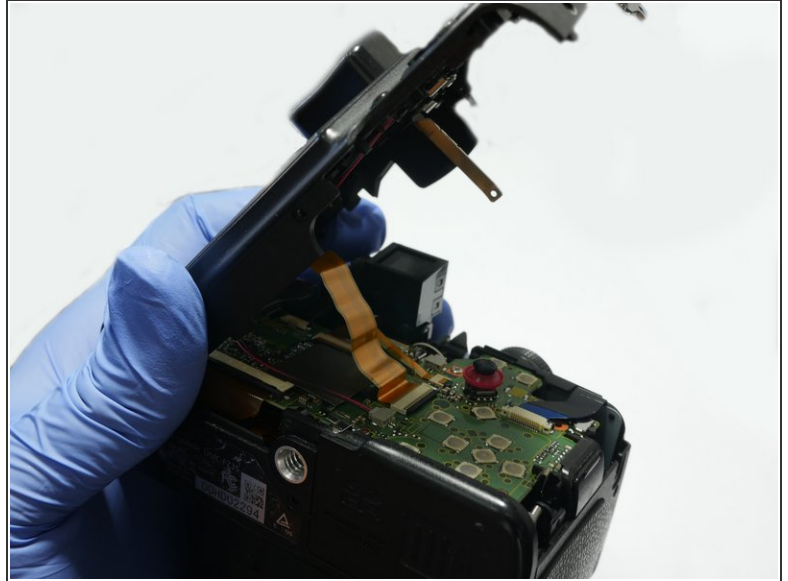
- Remove 3 Screws from bottom of unit
 - Remove 2 (0.6mm) screws next to door
 - Remove 1 (0.4mm) screw opposite of door


Step 4 — Remove top screw



- Raise the Pop-Up flash by pushing the flash button.
- Remove the screw (0.6mm) from underneath the flash assembly.

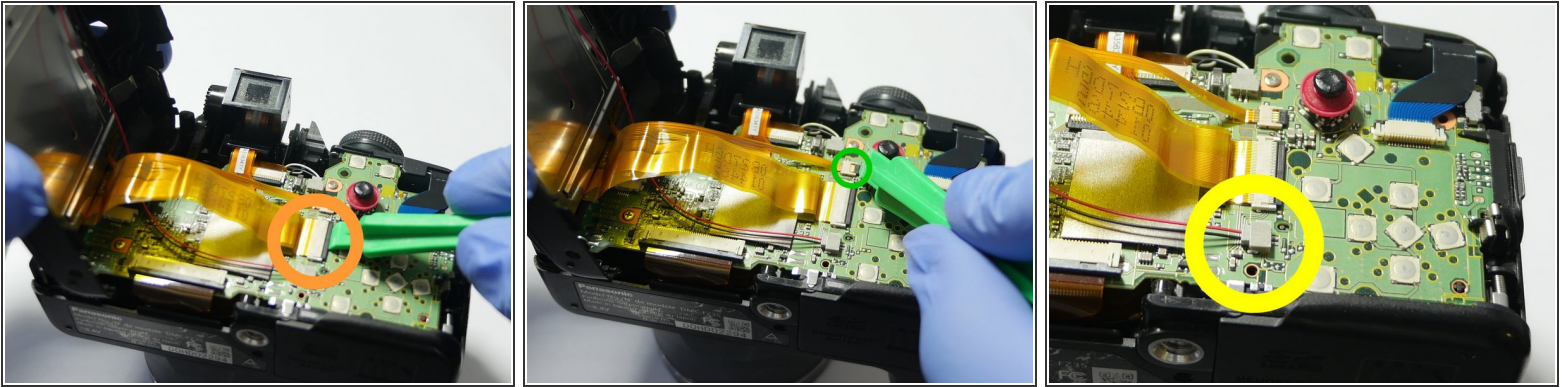
Step 5 — Accessing the flex cables



 Please be careful. Do not lift the cover fully because it is still attached to the Main Board via flex cables.

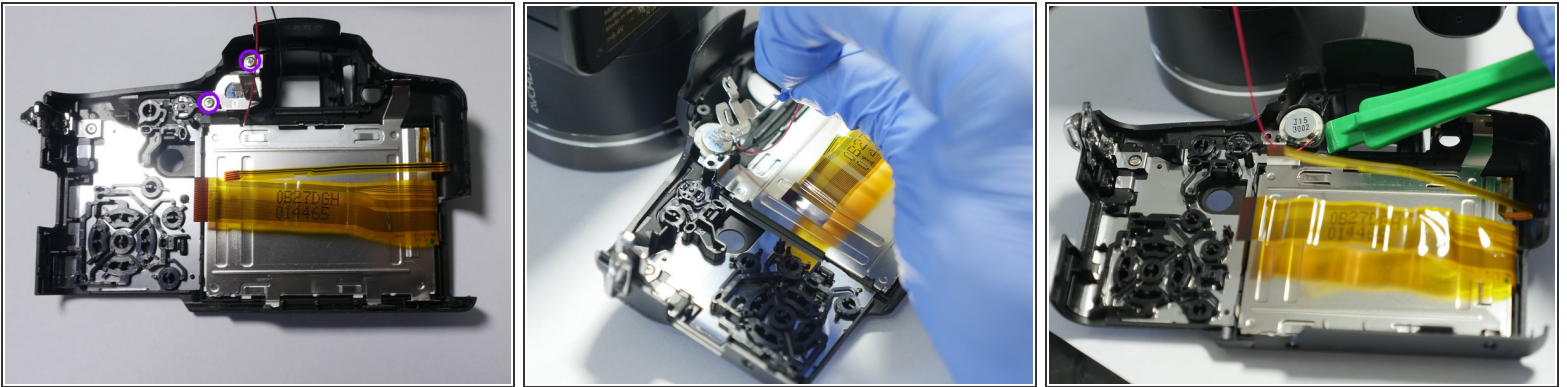
- Lift the cover slightly as shown in picture # 1
- Tilt the back cover as shown in picture #2. Be careful because the flex cables are still attached.

Step 6 — Release the Flex cables



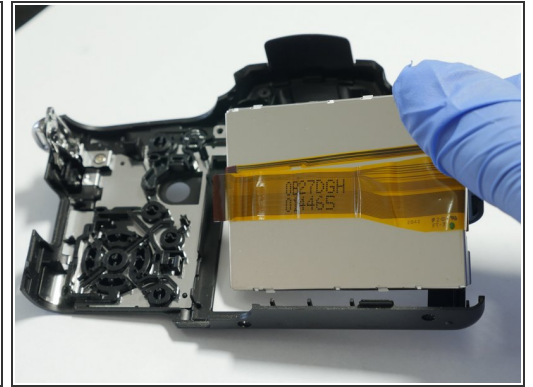
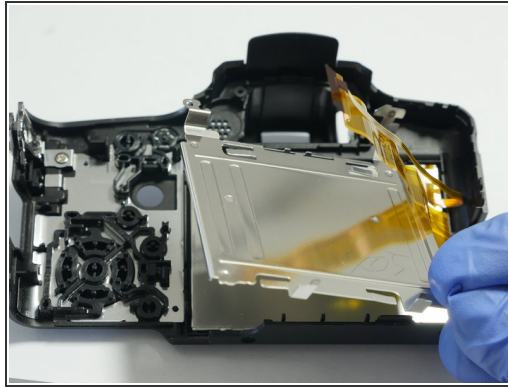
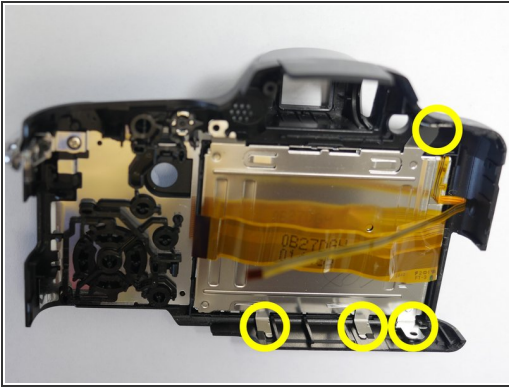
- Flip up LCD cable clamp with a spudger or other tool.
- Flip up backlite cable clamp with a spudger or other tool
- Removal of the mic wire is optional. My suggestion is to leave it attached. The mic can get damaged if you pull on the wire.

Step 7 — Remove the mic



- Remove the 2 screws (0.4mm) that are holding the mic assembly
- Next step (shown in picture #2) remove the metal mic hold part.
- Next step (shown in picture #3) use a spudger to pry off the mic. Careful not to damage the wiring.

Step 8 — Remove the LCD



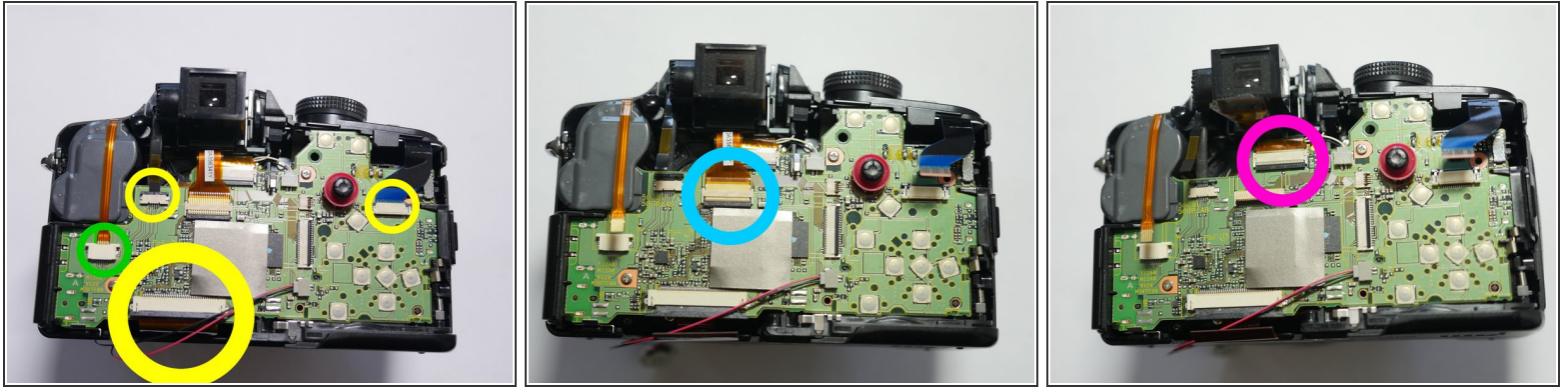
- Release the hold clips that hold the LCD retainer in place.
- Remove the LCD metal retainer plate as shown in picture #2
- Remove the LCD as shown in picture # 3

Step 9 — Swap out Old LCD



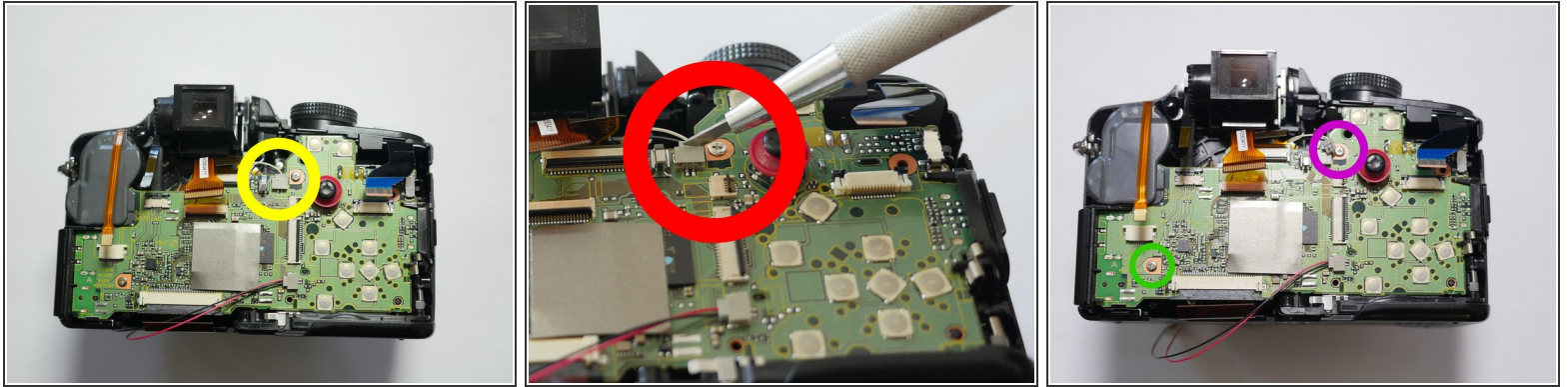
- Swap out your old LCD with the new one.
- If your backlite is ok you can buy only the LCD Display. But it is easier to purchase the LCD with the backlite attached. [Replacement LCD Display VYQ5034](#)

Step 10 — Release the Main PCB Flex Cables



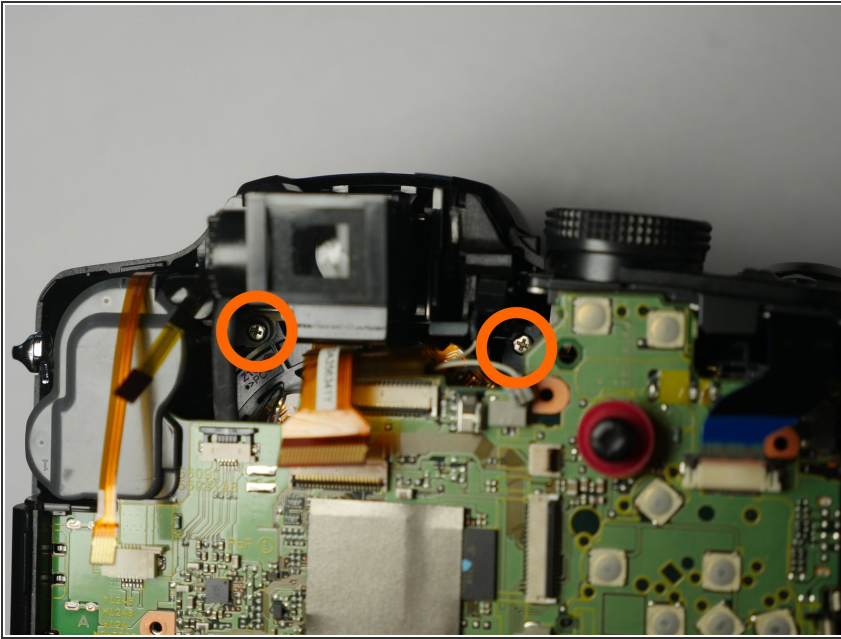
- Pull the 3 flex cables out using flat needle nose pliers (it is easier to slide open the black clamps prior to pulling). These are sliding clamps not flip (up) clamps.
- Pull the single cable from the socket. This is a friction fit socket.
- Flip up the Cable clamp (picture #2) using a spudger as shown in the previous pages and release the cable.
- Flip up the Cable Clamp (picture #3) using a spudger and release the cable.

Step 11 — Releasing wire



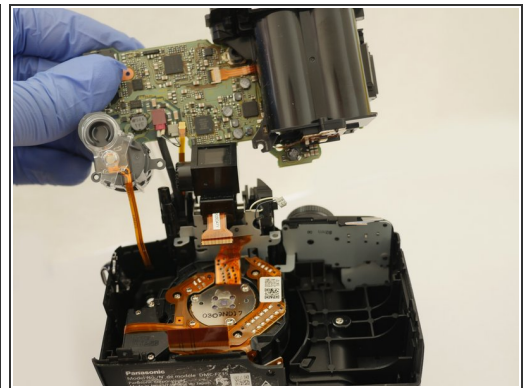
- Release the socket. It would be best to use a method that does not require pulling on the wires.
 - One way to release the socket is by carefully inserting a thin wedge between the male and female sockets and carefully pry them apart.
- ⚠ If you are using a sharp object be careful around the wires. Any slip can cut the wires. To prevent any ESD damage please do not touch any part of your circuit board with your bare hands or tools. Use nitrile gloves or an esd device.
- Remove 1 silver screw (0.4mm) next to joy stick.
 - Remove 1 silver blue tip coated (0.4mm) screw bottom left corner.

Step 12 — 0.8mm screws



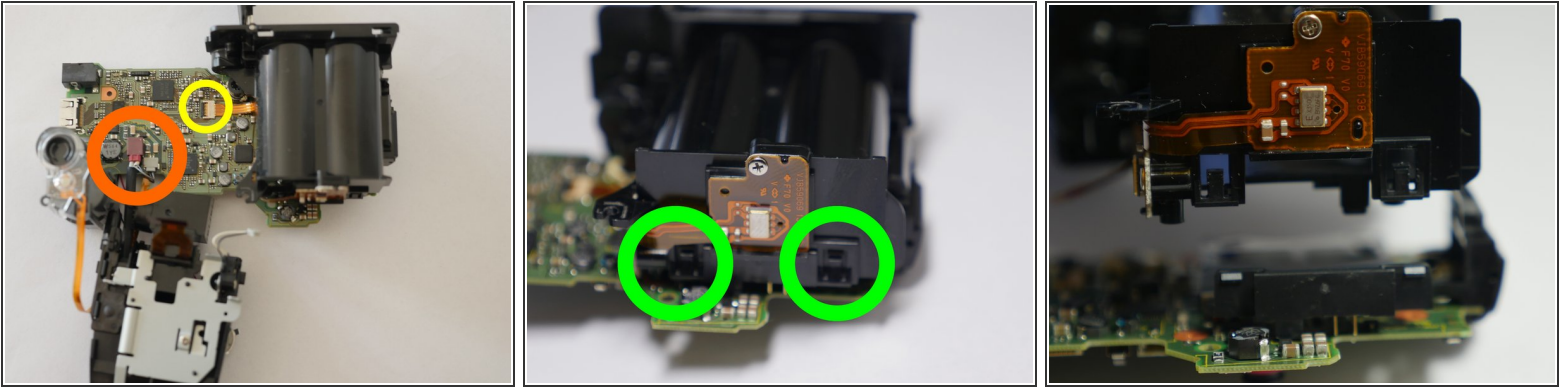
- Remove 2 silver (0.8mm) screws

Step 13



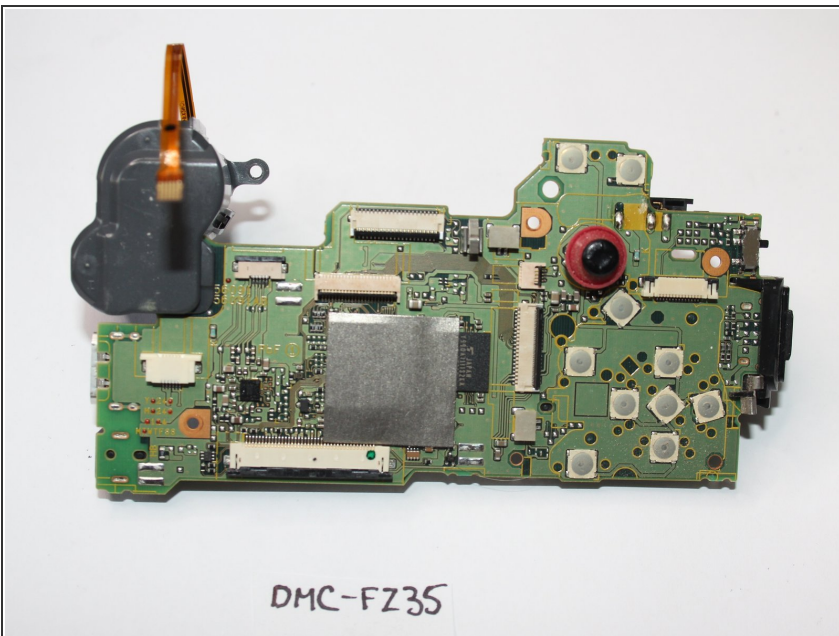
- Open battery compartment
- Grab battery door and lift up (do not remove yet) the Main Board and Compartment Part
- Carefully flip over board and pull up so that the flash assembly rises along with the main board from the camera body. Remove entire assembly from the camera body.

Step 14



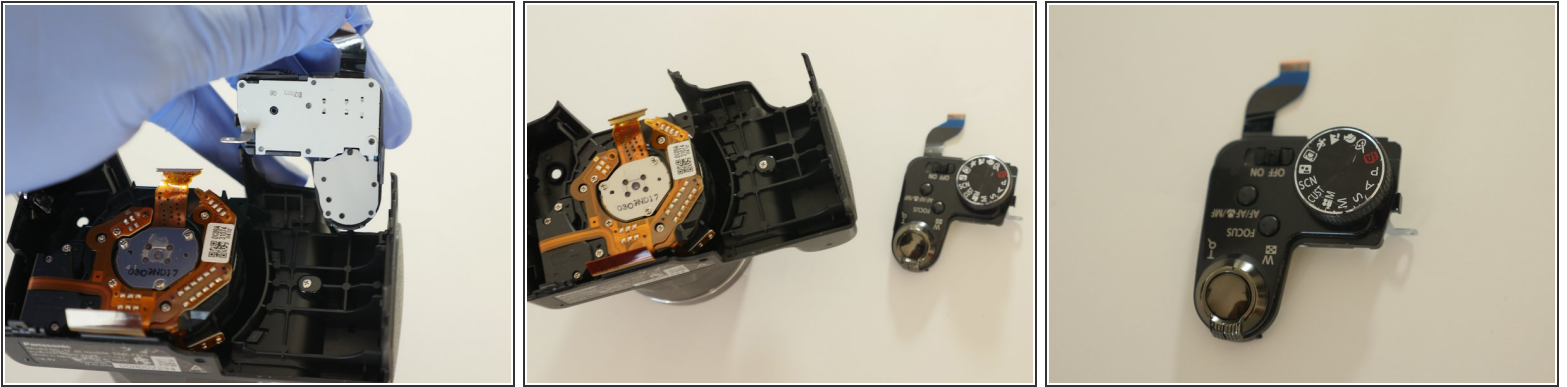
- Release the two cables from the main board.
- Used spudger to flip up cable clamp and remove flex cable
- Release the two hold clips and remove battery compartment

Step 15



- Swap out your old Board

Step 16 — Top Control Panel



- Pull out Top control panel from camera body

To reassemble your device, follow these instructions in reverse order.