



# Panasonic DMC-FZ70 Back Panel Replacement

Step by step tutorial how to get into the inside of the Panasonic DMC-FZ70

Written By: Alberto Rodriguez



# INTRODUCTION

## Prerequisite Only

This guide will show you how to remove the back panel of the camera so that you can access the inside.

Before you begin, make sure that the battery and SD card have been removed from the camera.



## TOOLS:

- [Metal Spudger](#) (1)
  - [iFixit Opening Tools](#) (1)
  - [Phillips #00 Screwdriver](#) (1)
  - [Pro Tech Toolkit](#) (1)  
*150 mm Flex Extension*
  - [Phillips #0 Screwdriver](#) (1)
-

## Step 1 — Back Panel



- i** All screws should be removed using a Phillips #0 screwdriver.
- Using your screwdriver, unscrew the two 5.0 mm Philips screws to the right of the LCD screen.

## Step 2



- Flip the camera over to the left side of the screen and unscrew the 5mm Phillips screw found there.



### Step 3



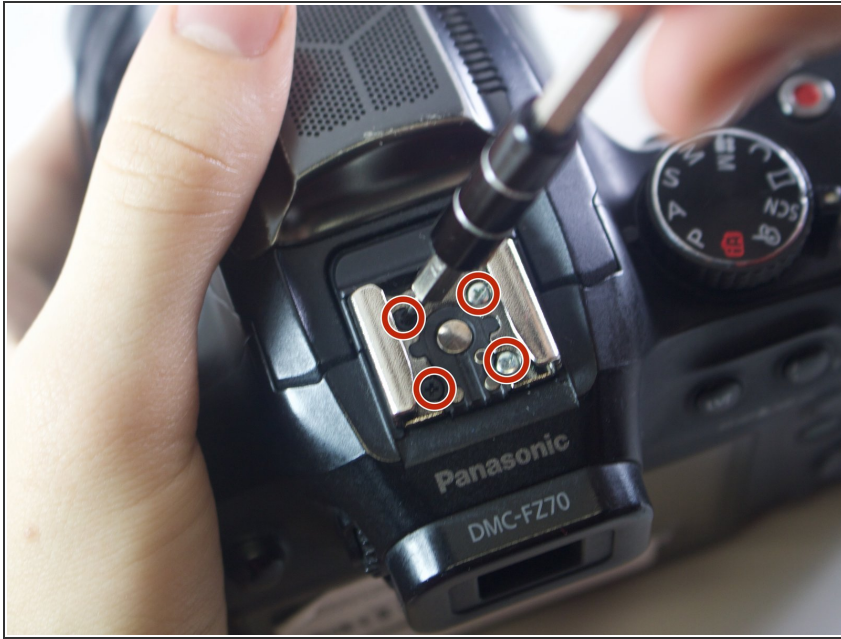
- Turn the camera upside down and unscrew the three 5mm screws found on the bottom.

### Step 4



- On the top of the camera locate the two rails with a thin sheet of metal on the floor between them.
- With a metal spudger, lift this sheet and push it out of the rail device to detach it from the camera.

## Step 5



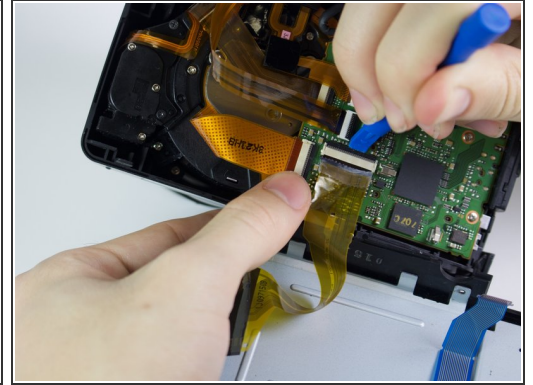
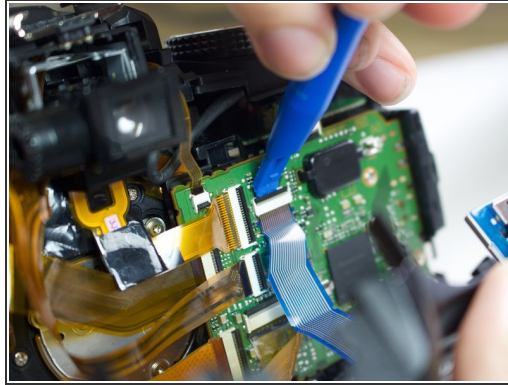
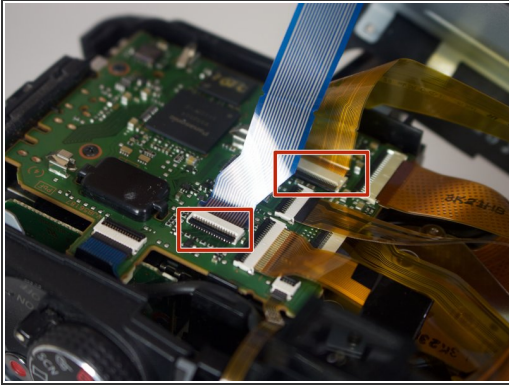
- Proceed to remove the four 5mm Phillips screws that you just uncovered.

## Step 6



- Slowly pull on both side of the camera, until both halves begin to separate from each other.
- ⚠ Do not pull too hard, as both halves are held together with ZIF connector cables.

## Step 7



- Using a plastic opening tool, carefully flip up the small black levers that attach the ribbon cables to the ZIF connectors on the motherboard.
- Carefully pull the ribbon cables out of the slot once they have been released.
- ⓘ Only the two indicated connectors need to be removed to separate the two halves of the camera.

To reassemble your device, follow these instructions in reverse order.