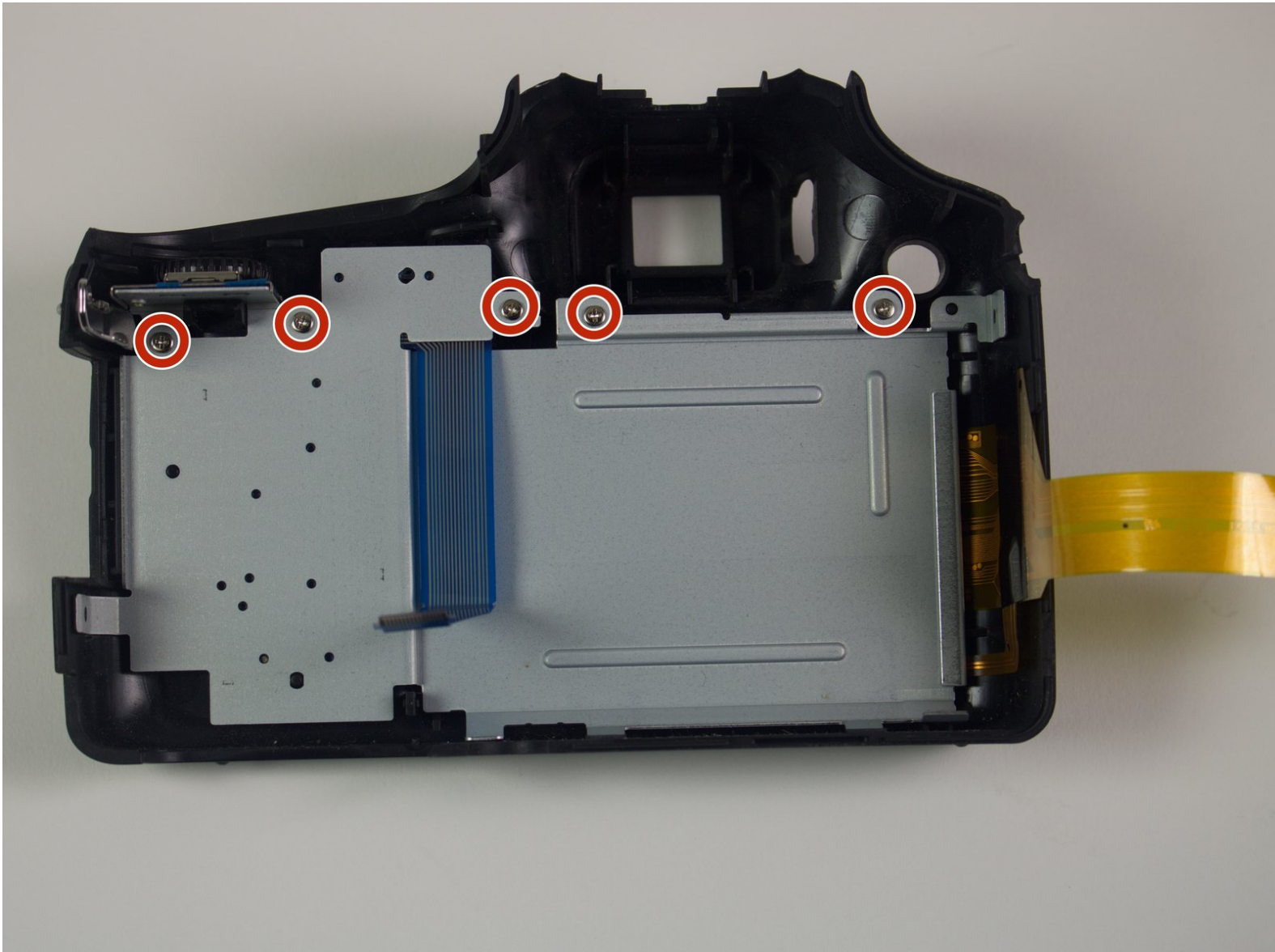




Panasonic DMC-FZ70 LCD Screen Replacement

How to get into the Panasonic DMC-FZ70 and change the LCD screen.

Written By: Alberto Rodriguez



INTRODUCTION

This guide will show you how to remove the LCD screen of your camera. If the screen is cracked or not working, you can use this guide to learn how to remove and replace it. Before you begin, make sure that the battery and SD card have been removed.

TOOLS:

- [Phillips #00 Screwdriver](#) (1)
 - [Metal Spudger](#) (1)
 - [iFixit Opening Tools](#) (1)
 - [Pro Tech Toolkit](#) (1)
150 mm Flex Extension
 - [Phillips #0 Screwdriver](#) (1)
-

Step 1 — Back Panel



- i** All screws should be removed using a Phillips #0 screwdriver.
- Using your screwdriver, unscrew the two 5.0 mm Philips screws to the right of the LCD screen.

Step 2



- Flip the camera over to the left side of the screen and unscrew the 5mm Phillips screw found there.

Step 3



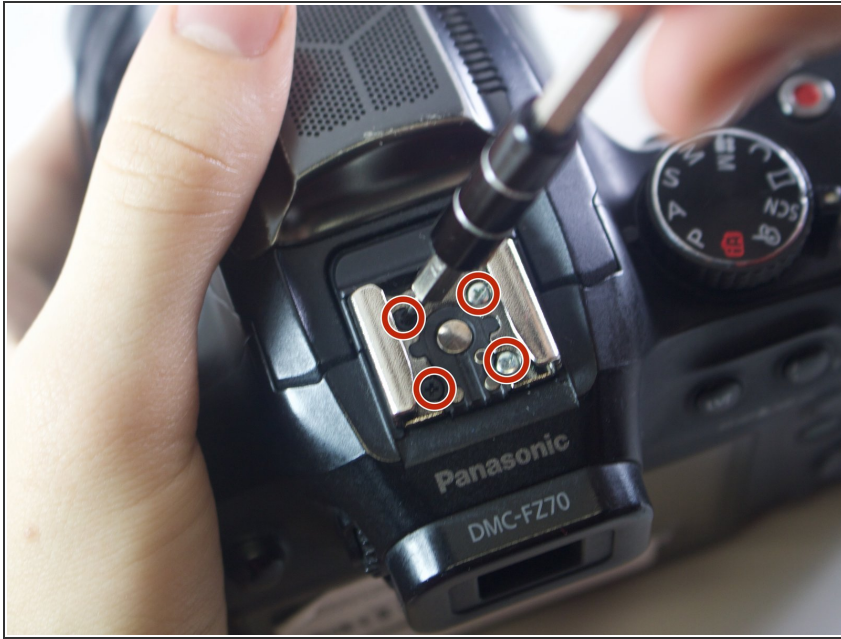
- Turn the camera upside down and unscrew the three 5mm screws found on the bottom.

Step 4



- On the top of the camera locate the two rails with a thin sheet of metal on the floor between them.
- With a metal spudger, lift this sheet and push it out of the rail device to detach it from the camera.

Step 5



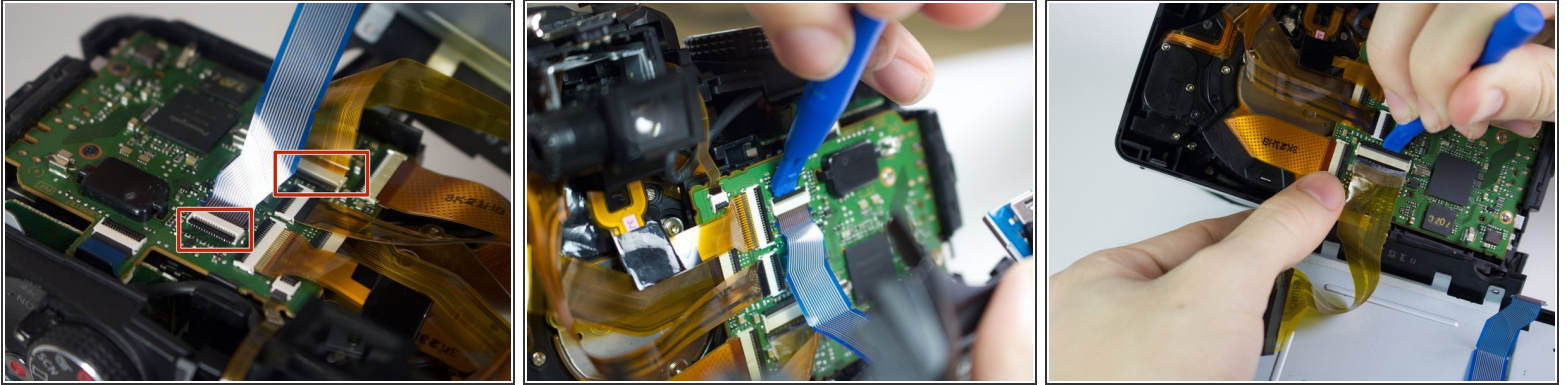
- Proceed to remove the four 5mm Phillips screws that you just uncovered.

Step 6



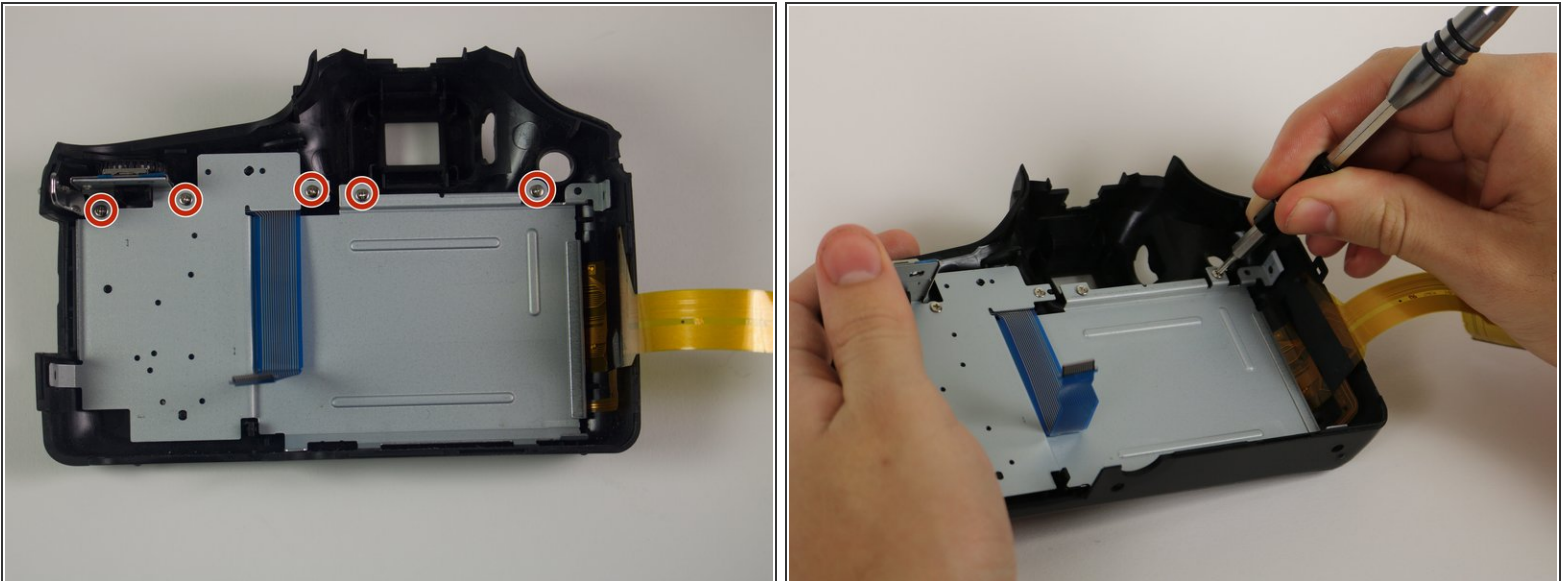
- Slowly pull on both side of the camera, until both halves begin to separate from each other.
- ⚠ Do not pull too hard, as both halves are held together with ZIF connector cables.

Step 7



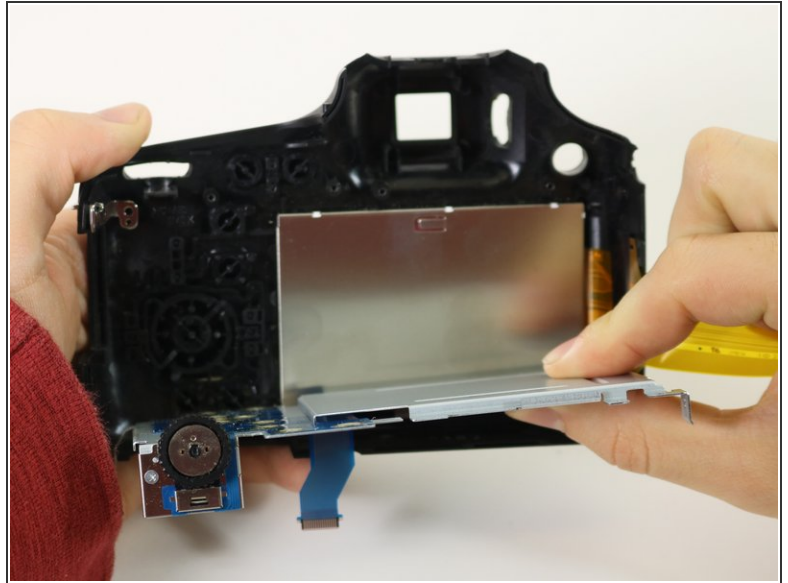
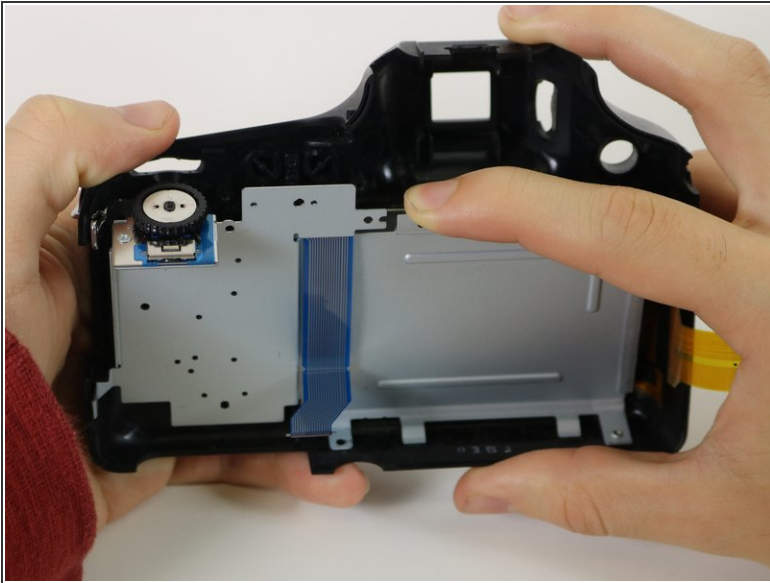
- Using a plastic opening tool, carefully flip up the small black levers that attach the ribbon cables to the ZIF connectors on the motherboard.
- Carefully pull the ribbon cables out of the slot once they have been released.
- ⓘ Only the two indicated connectors need to be removed to separate the two halves of the camera.

Step 8 — LCD Screen



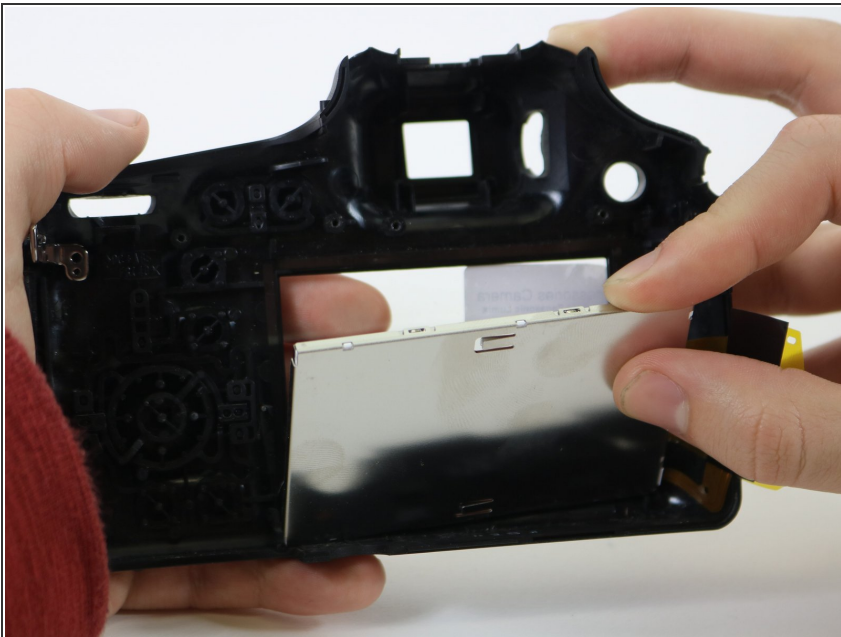
- Unscrew the five 5mm screws on the panel that you just removed.

Step 9



- Remove the entire silver panel to reveal the back of the LCD screen

Step 10



- Remove the LCD screen.

To reassemble your device, follow these instructions in reverse order.