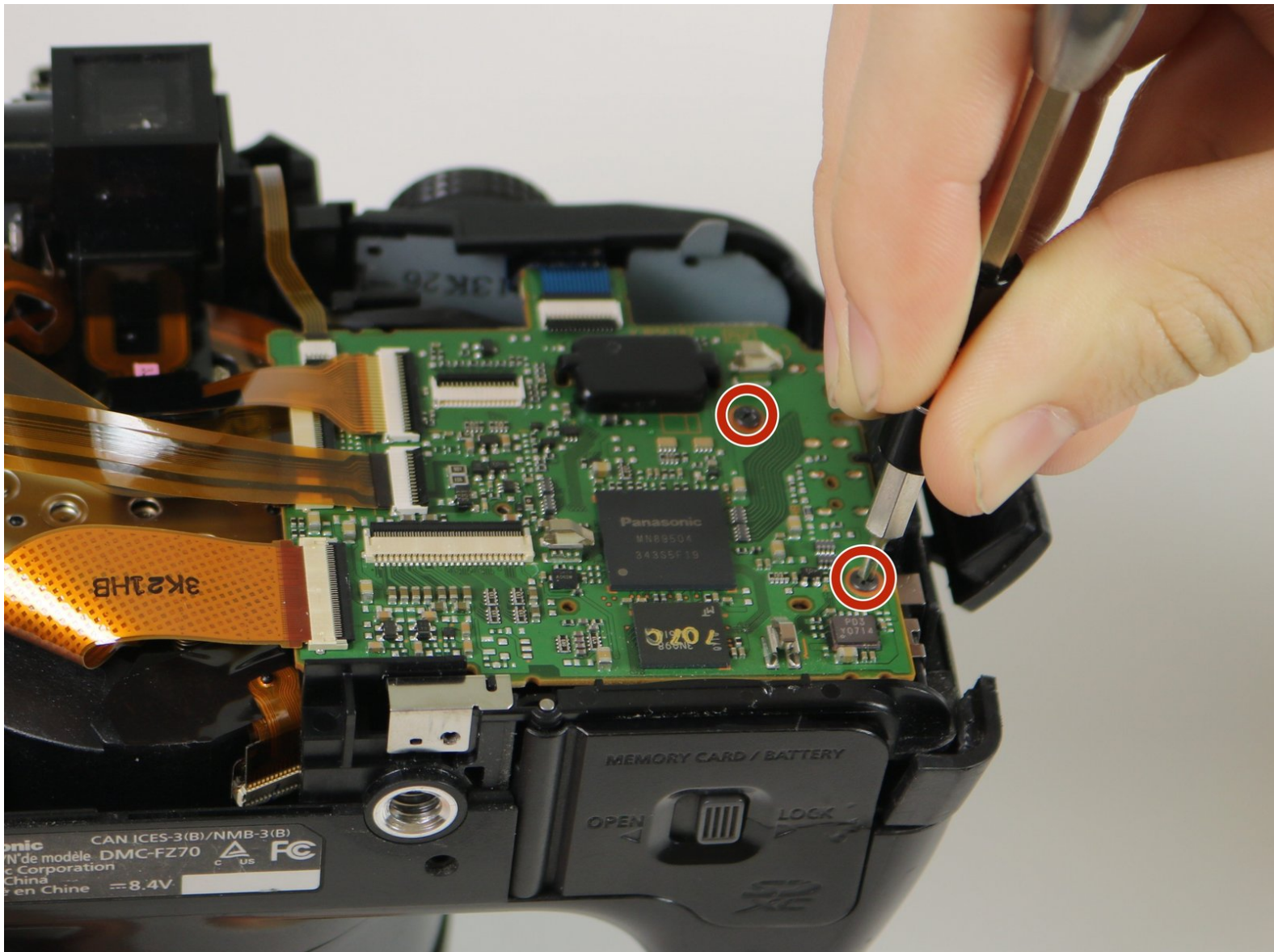




# Panasonic DMC-FZ70 Motherboard Replacement

This guide will show you how to replace the motherboard of your Panasonic DMC-FZ70.

Written By: Emily Kuzmicky



---

## INTRODUCTION

This guide will help removed and replaced your damaged or old motherboard. If you have problems turning on your camera and you have checked your battery then you may need to follow this guide to replace the motherboard. Before you begin, make sure that the battery and SD card have been removed.



### TOOLS:

- [Phillips #00 Screwdriver](#) (1)
  - [Metal Spudger](#) (1)
  - [iFixit Opening Tools](#) (1)
  - [Pro Tech Toolkit](#) (1)  
*150 mm Flex Extension*
  - [Phillips #0 Screwdriver](#) (1)
-

## Step 1 — Back Panel



- i** All screws should be removed using a Phillips #0 screwdriver.
- Using your screwdriver, unscrew the two 5.0 mm Philips screws to the right of the LCD screen.

## Step 2



- Flip the camera over to the left side of the screen and unscrew the 5mm Phillips screw found there.

### Step 3



- Turn the camera upside down and unscrew the three 5mm screws found on the bottom.

### Step 4



- On the top of the camera locate the two rails with a thin sheet of metal on the floor between them.
- With a metal spudger, lift this sheet and push it out of the rail device to detach it from the camera.

## Step 5



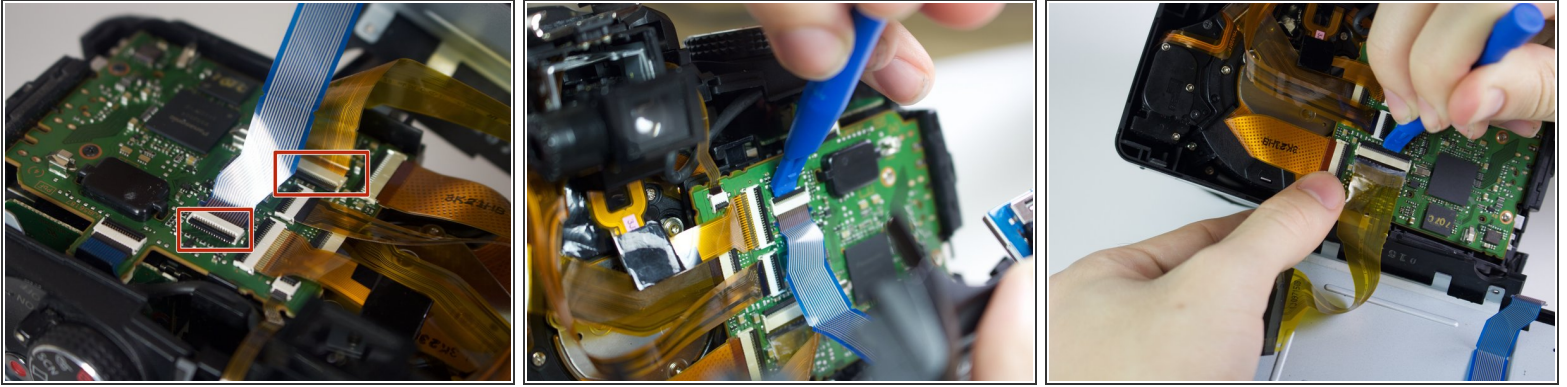
- Proceed to remove the four 5mm Phillips screws that you just uncovered.

## Step 6



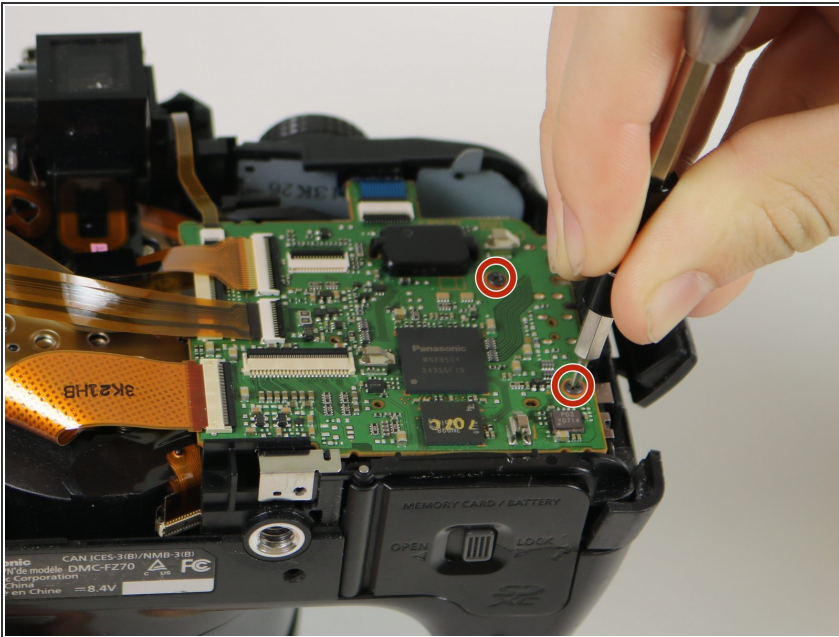
- Slowly pull on both side of the camera, until both halves begin to separate from each other.
- ⚠ Do not pull too hard, as both halves are held together with ZIF connector cables.

## Step 7



- Using a plastic opening tool, carefully flip up the small black levers that attach the ribbon cables to the ZIF connectors on the motherboard.
- Carefully pull the ribbon cables out of the slot once they have been released.
- ❗ Only the two indicated connectors need to be removed to separate the two halves of the camera.

## Step 8 — Motherboard



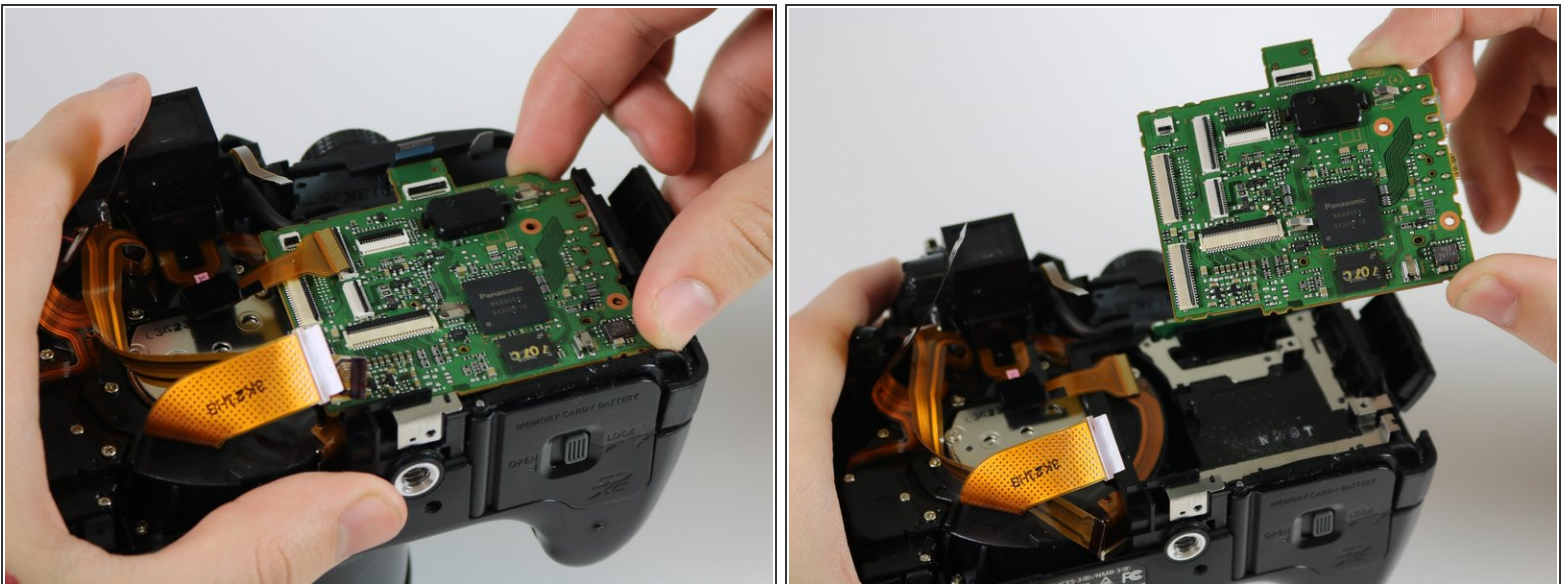
- Using a Torx driver, unscrew the two 5mm Phillips screws on the motherboard

## Step 9



- The five ribbon cables shown will need to be removed from the ZIF connectors. Using a plastic opening tool, unlock the cables by lifting the black strip on the rectangular connection socket.
- Carefully pull each of the ribbon cables out of their sockets.
- ⓘ The cable should slide out smoothly- any significant resistance might signal that the locking lever has not yet released the cable.

## Step 10



- Once the screws and the ribbon cables have been removed, lift the mother board from its slot.

To reassemble your device, follow these instructions in reverse order.