



# Panasonic DMC-FZ70 Operation Unit Replacement

We will be replacing the operations panel of the Panasonic DMC-FZ70 camera.

Written By: Alberto Rodriguez



## INTRODUCTION

The Operations Unit is a panel of top of the camera that contains the mode dial, power switch, shutter button, and video-record button. If any of these buttons are missing, jammed, or no longer working, you can use this guide to learn how to replace the unit. Before you begin, make sure that the battery and SD card have been removed.



### TOOLS:

- [Metal Spudger](#) (1)
- [Phillips #00 Screwdriver](#) (1)
- [iFixit Opening Tools](#) (1)
- [Pro Tech Toolkit](#) (1)  
*150 mm Flex Extension*
- [Phillips #0 Screwdriver](#) (1)



### PARTS:

- [Operation Panel](#) (1)

## Step 1 — Back Panel



**i** All screws should be removed using a Phillips #0 screwdriver.

- Using your screwdriver, unscrew the two 5.0 mm Philips screws to the right of the LCD screen.

## Step 2



- Flip the camera over to the left side of the screen and unscrew the 5mm Phillips screw found there.



### Step 3



- Turn the camera upside down and unscrew the three 5mm screws found on the bottom.

### Step 4



- On the top of the camera locate the two rails with a thin sheet of metal on the floor between them.
- With a metal spudger, lift this sheet and push it out of the rail device to detach it from the camera.

## Step 5



- Proceed to remove the four 5mm Phillips screws that you just uncovered.

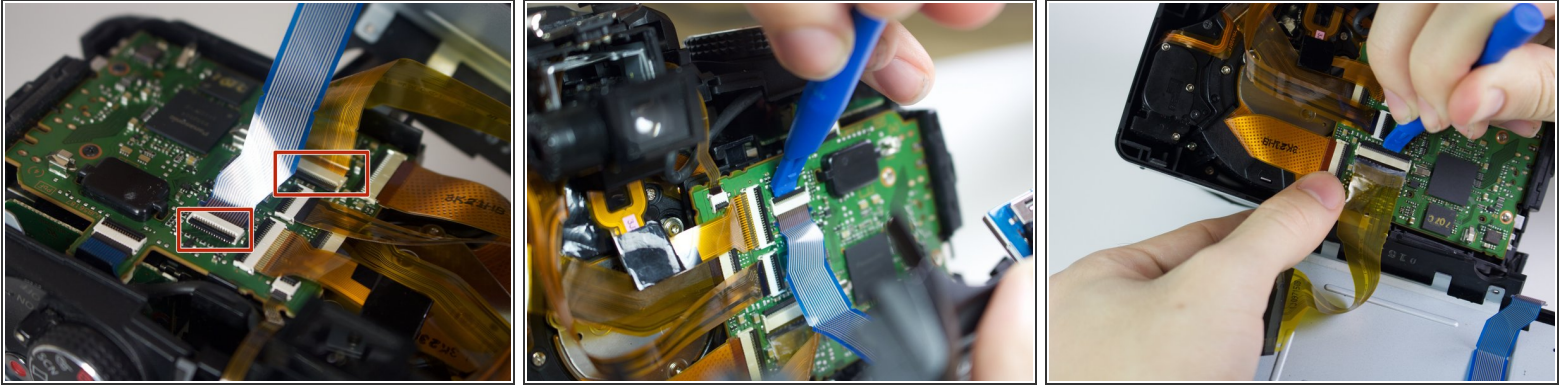
## Step 6



- Slowly pull on both side of the camera, until both halves begin to separate from each other.
- ⚠ Do not pull too hard, as both halves are held together with ZIF connector cables.

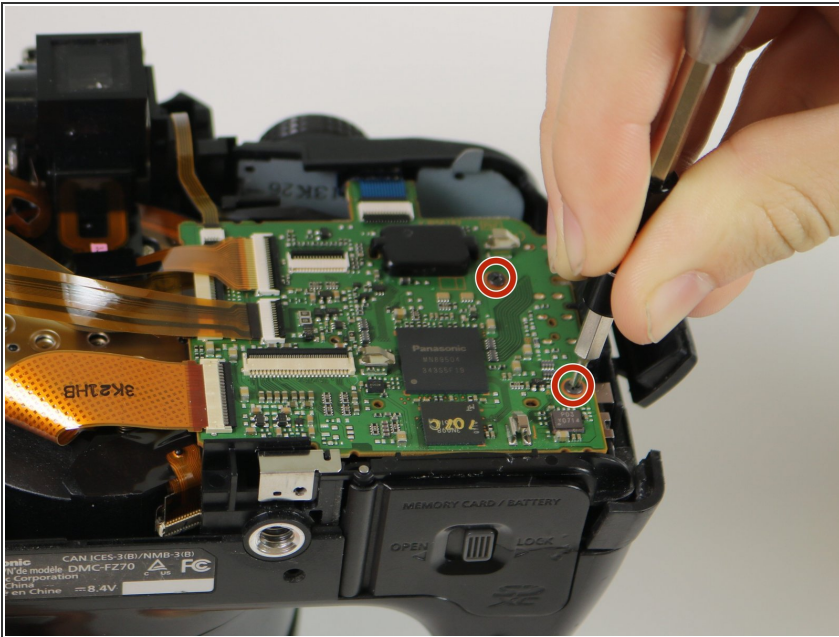


## Step 7



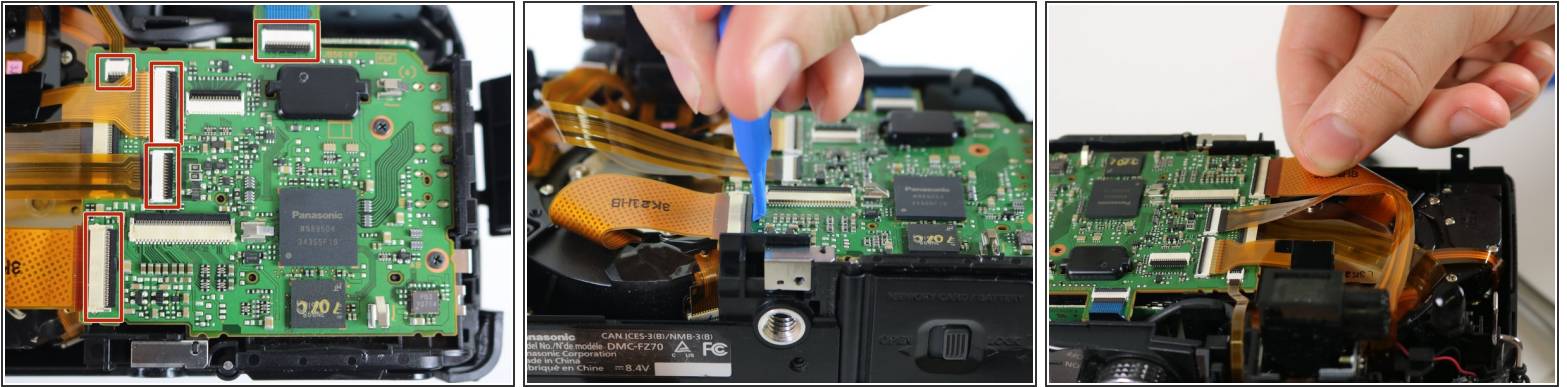
- Using a plastic opening tool, carefully flip up the small black levers that attach the ribbon cables to the ZIF connectors on the motherboard.
- Carefully pull the ribbon cables out of the slot once they have been released.
- ❗ Only the two indicated connectors need to be removed to separate the two halves of the camera.

## Step 8 — Motherboard



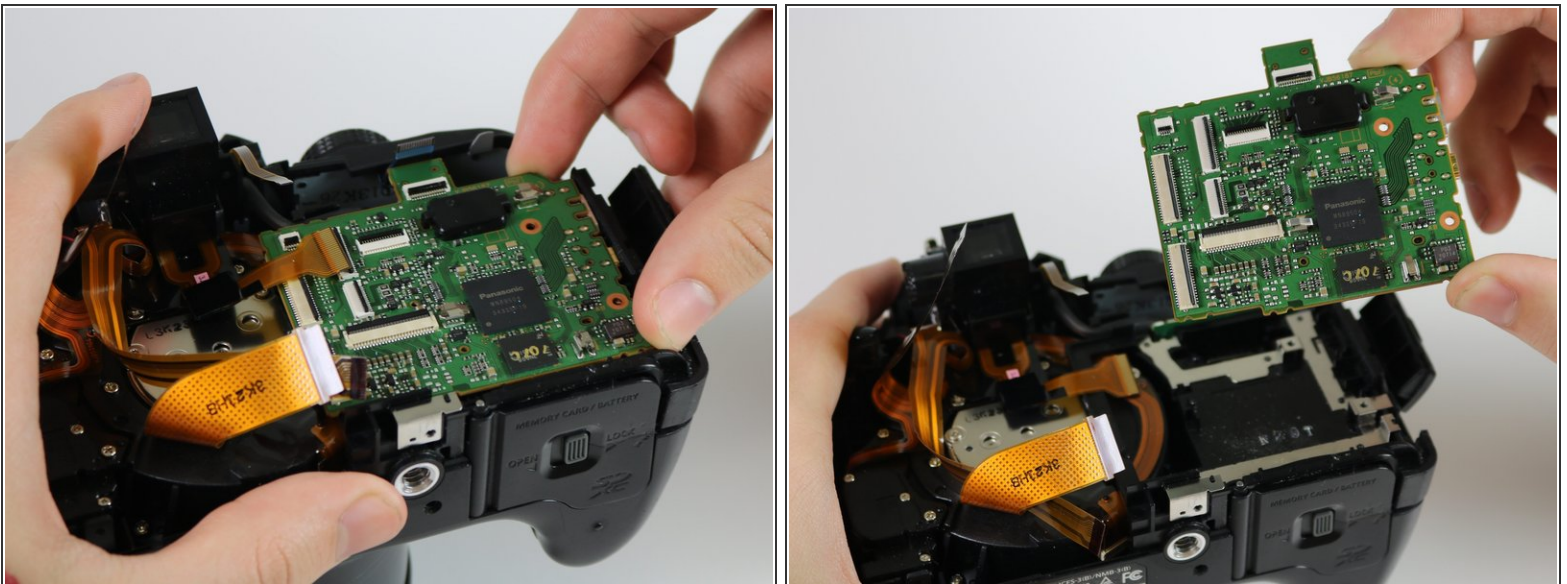
- Using a Torx driver, unscrew the two 5mm Phillips screws on the motherboard

## Step 9



- The five ribbon cables shown will need to be removed from the ZIF connectors. Using a plastic opening tool, unlock the cables by lifting the black strip on the rectangular connection socket.
- Carefully pull each of the ribbon cables out of their sockets.
- ⓘ The cable should slide out smoothly- any significant resistance might signal that the locking lever has not yet released the cable.

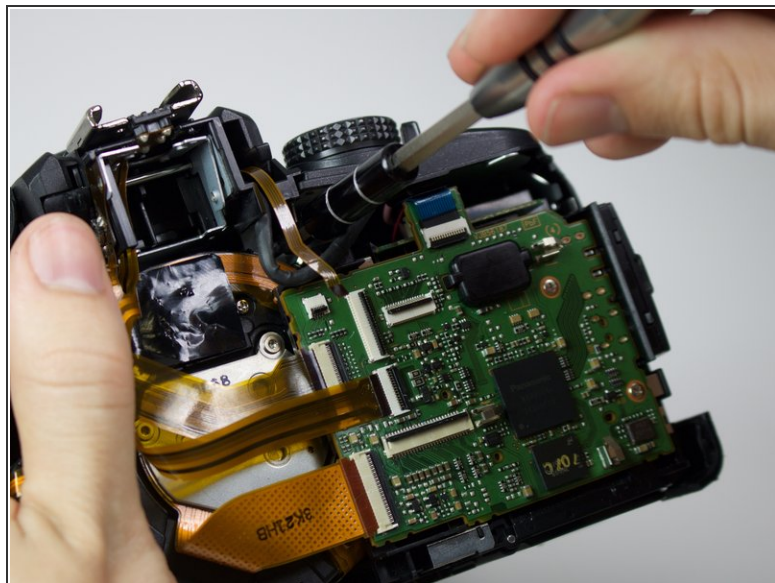
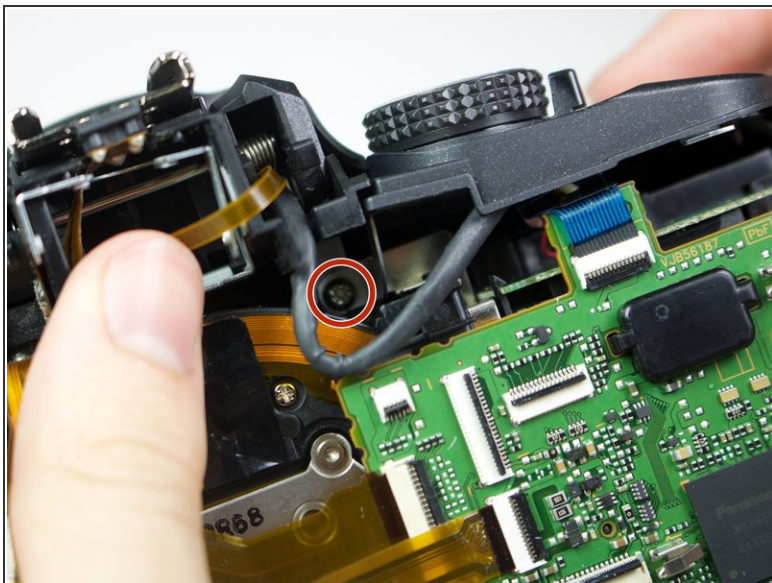
## Step 10



- Once the screws and the ribbon cables have been removed, lift the mother board from its slot.

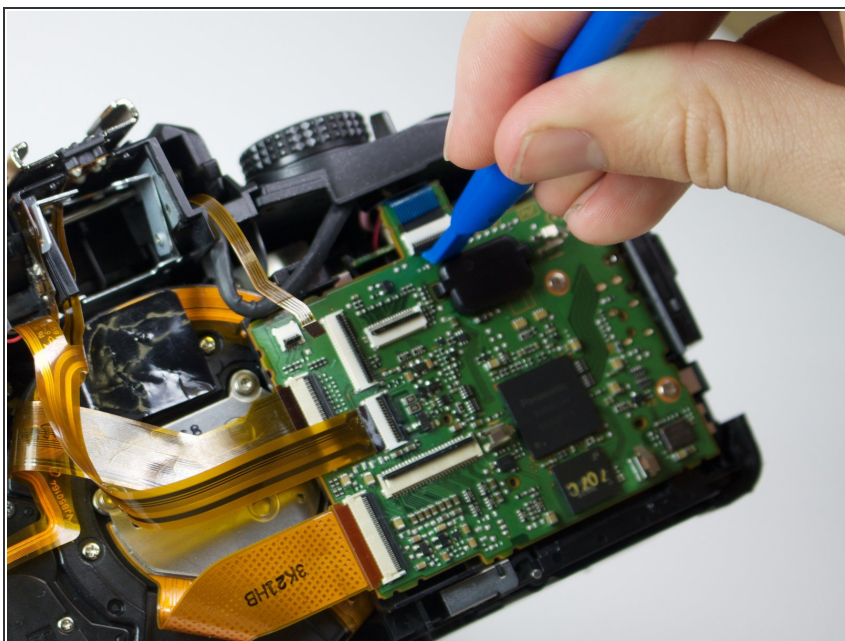


## Step 11 — Operation Unit



- Unscrew one 10mm Phillips screw to the right and underneath the viewfinder.

## Step 12

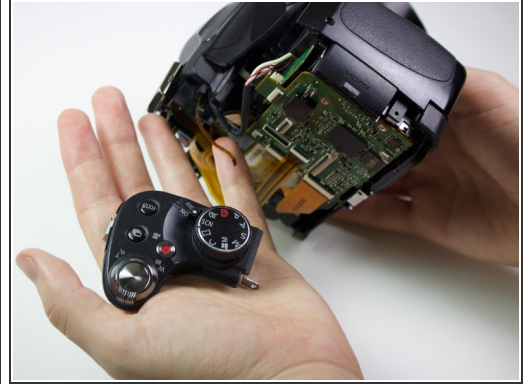


- Using a plastic opening tool, flip up the switch on the ZIF connector underneath the operations unit and



pull the ribbon out of the motherboard.

## Step 13



- Slide out and replace the operation unit.

To reassemble your device, follow these instructions in reverse order.