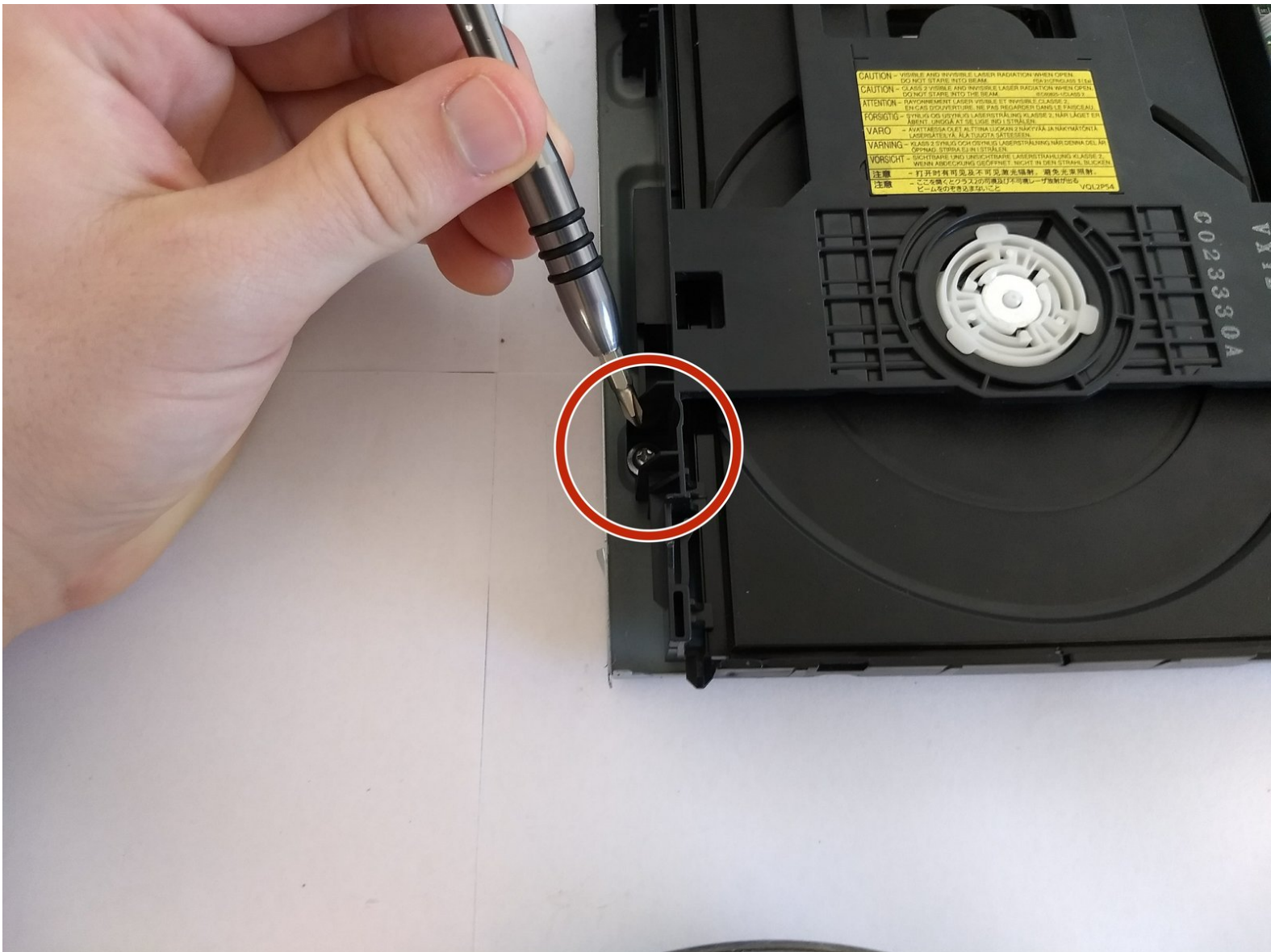




Panasonic DMP-BD89 Disk Drive Replacement

How to remove/replace disk drive on Panasonic Panasonic DMP-BD89 DVD player.

Written By: Julian

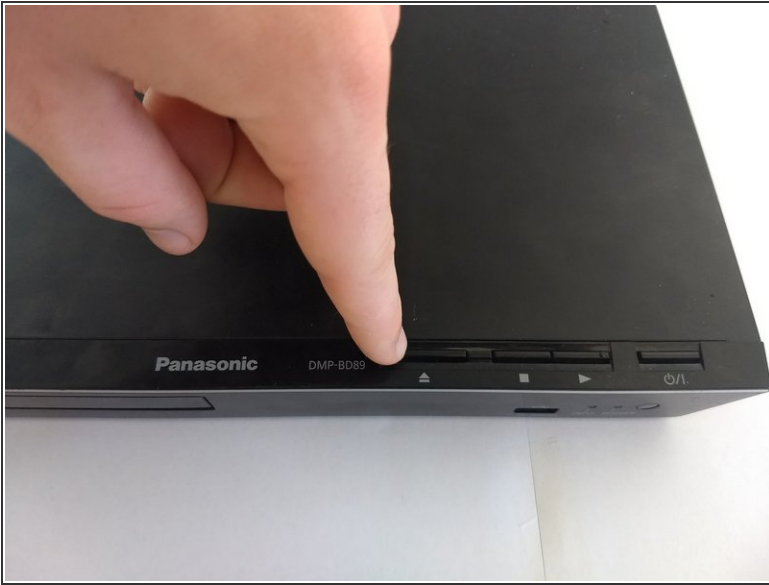




TOOLS:

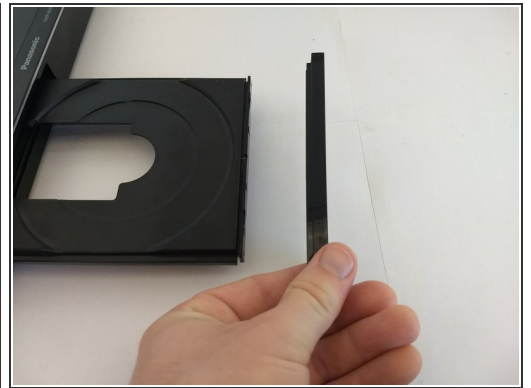
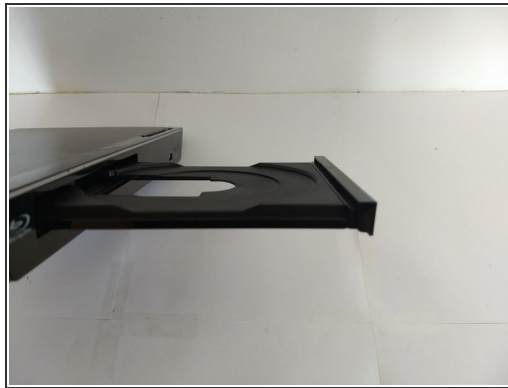
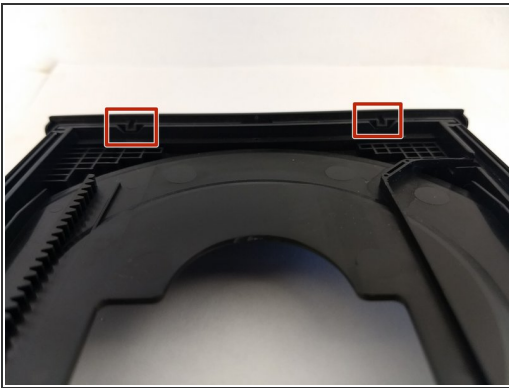
- [Phillips #1 Screwdriver](#) (1)
- [Tweezers](#) (1)
- [iFixit Opening Tools](#) (1)

Step 1 — Disk Tray Cover



- First, before powering off, press the eject button to open the tray.

Step 2



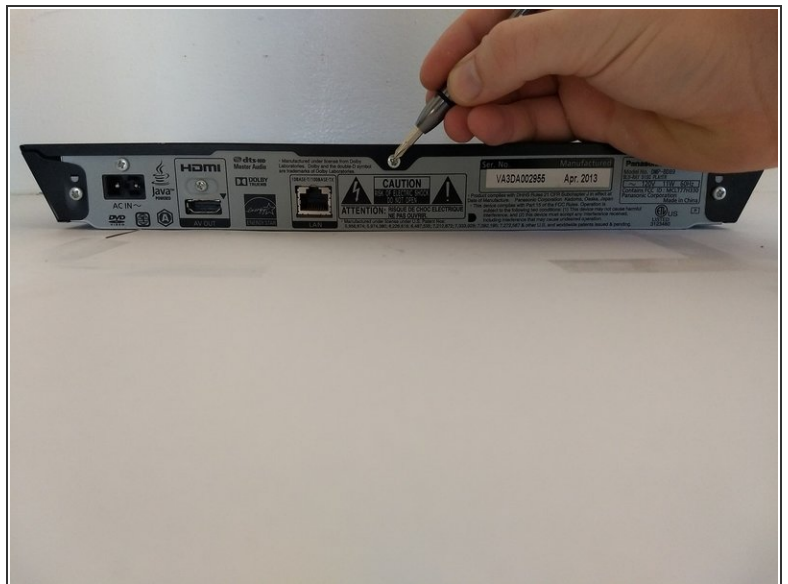
- Remove the front cover of the tray.
- Do so by gently pushing it out, away from the player, ensuring the pictured tabs clear the tray.
- Then slide it vertically up and away.

Step 3



- Press eject button to close the tray.
- Make sure to unpower and unplug device before continue work on other fixes.

Step 4 — Exterior Cover



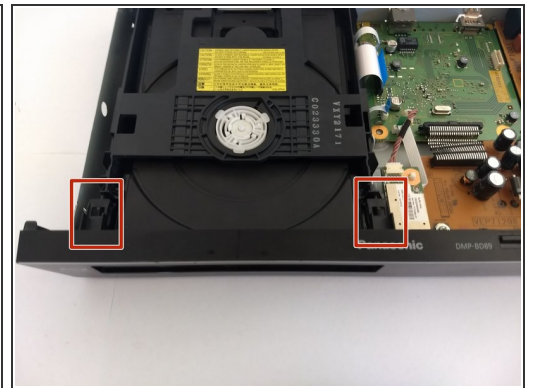
- Using a Phillips #1 screwdriver, unscrew the back three screws.

Step 5



- Slide the top panel horizontally to remove it.

Step 6



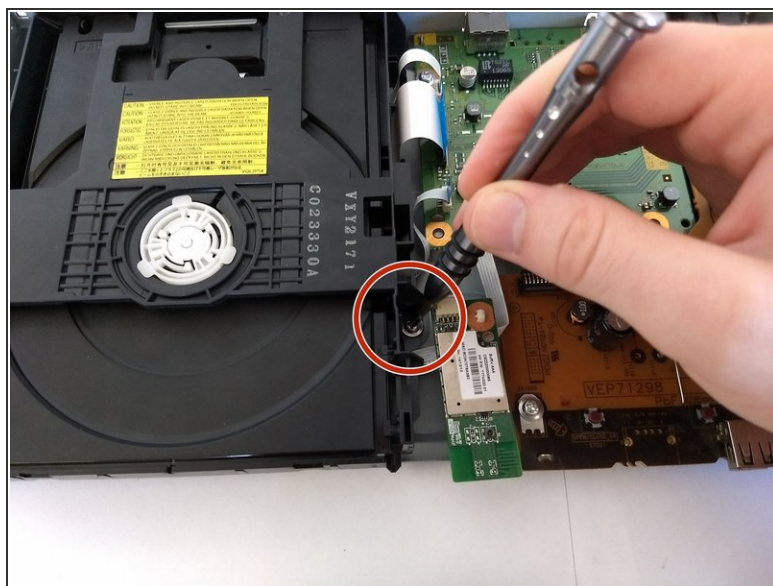
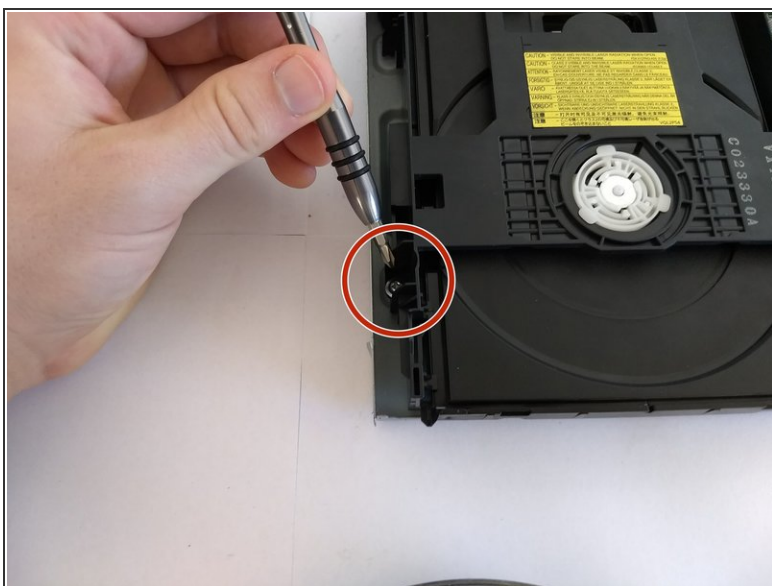
- Locate 6 tabs across the device.
- 2 are on the bottom, 1 is on the left and right, and 2 are on the inside.

Step 7



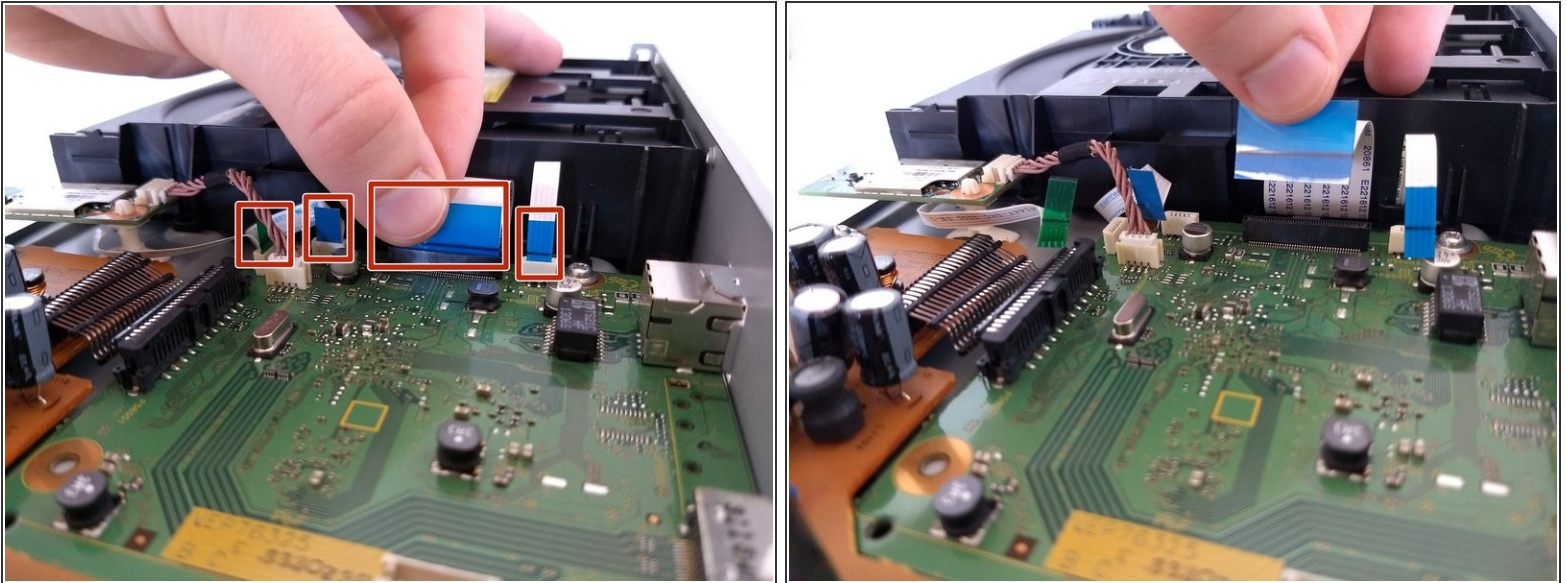
- Pop the 6 markers out.
- Then take off the cover.

Step 8 — Disk Drive



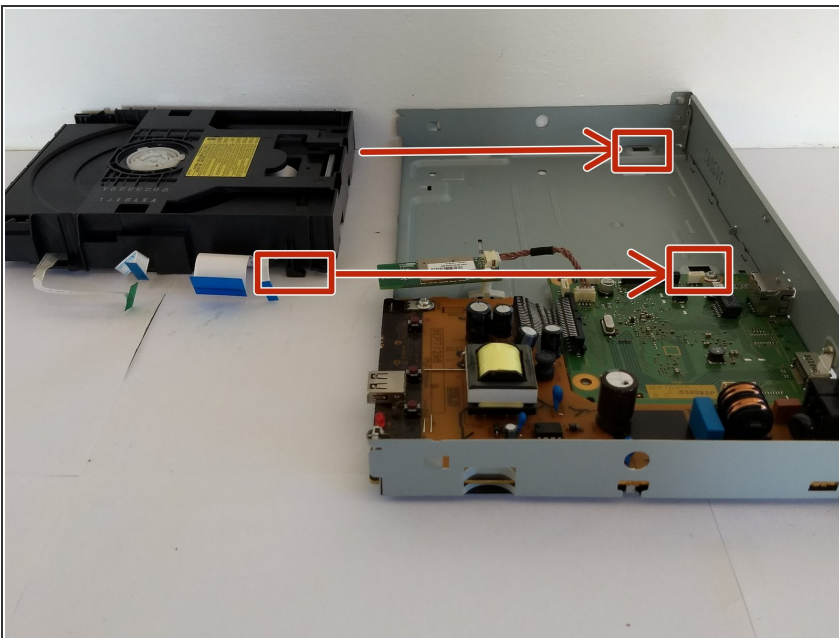
- Remove screws surrounding disk drive that attach it to outer cover.

Step 9



- Remove the one green and three blue tabs pictured that connect the disk drive to the board. Try to do so carefully, to avoid damage to the hardware.

Step 10



- Carefully take the drive out of the device. Note where the feet need to go back in for reassembly.

To reassemble your device, follow these instructions in reverse order. Ensure the feet of the disk drive go back in the holes.