



# Panasonic EB TX320ASW Teardown

Teardown and troubleshooting Panasonic EB TX320ASW

Written By: Andrew Foss



# INTRODUCTION

In this tutorial we will show you a breakdown of the Panazonic EB TX320. By using this guide, a user will be able to properly take apart their phone and replace any broken components.



## TOOLS:

- [iFixit Opening Tools](#) (1)
  - [Spudger](#) (1)
  - [T3 Torx Screwdriver](#) (1)
-

## Step 1 — Panasonic EB TX320ASW Teardown



- To remove the faceplate, pry the top of faceplate away from the phone. Follow snaps down, until faceplate is completely popped off.

## Step 2



- To remove battery push clip in; battery will pop out.

## Step 3



- Using a Star 3.0 bit, remove 4 screws in battery compartment.

## Step 4



- To separate front of phone from the back; start prying from bottom and work up the side. The phone should then pop apart.

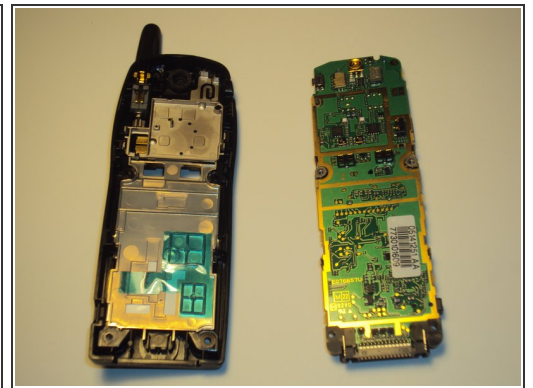
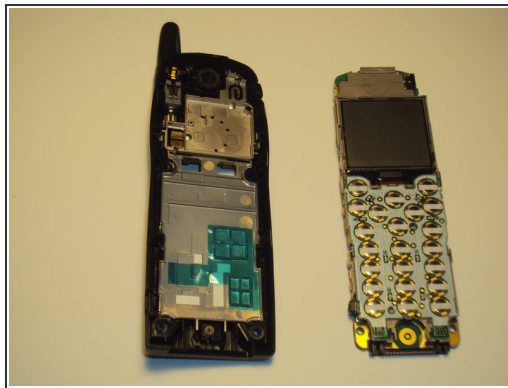
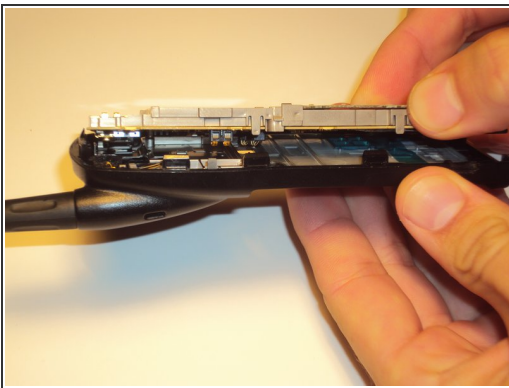


## Step 5



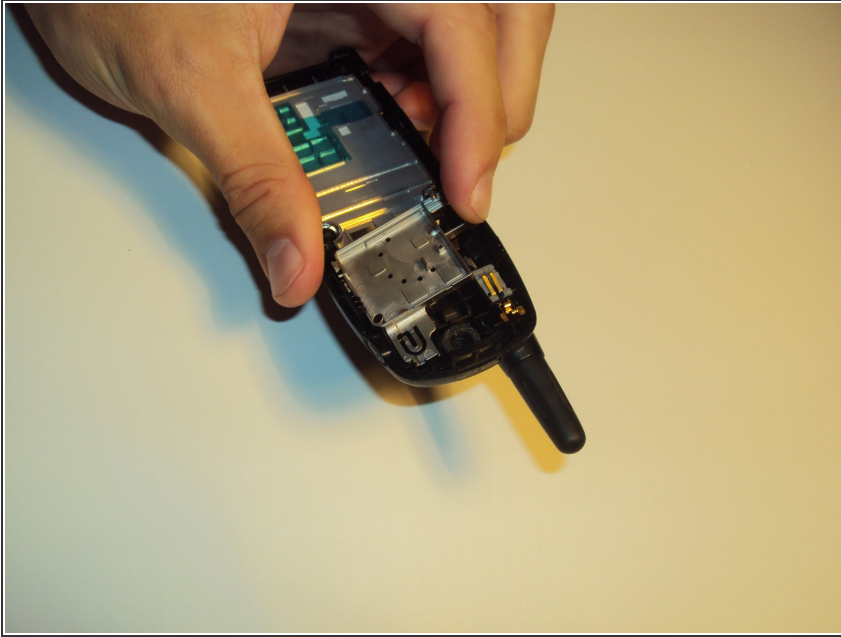
- To remove keypad, turn front of phone over and let keypad fall out. All keys are connected by one rubber section.
- If a button had been ripped off your keypad, you can replace the entire rubber keypad at this step and reassemble phone.

## Step 6



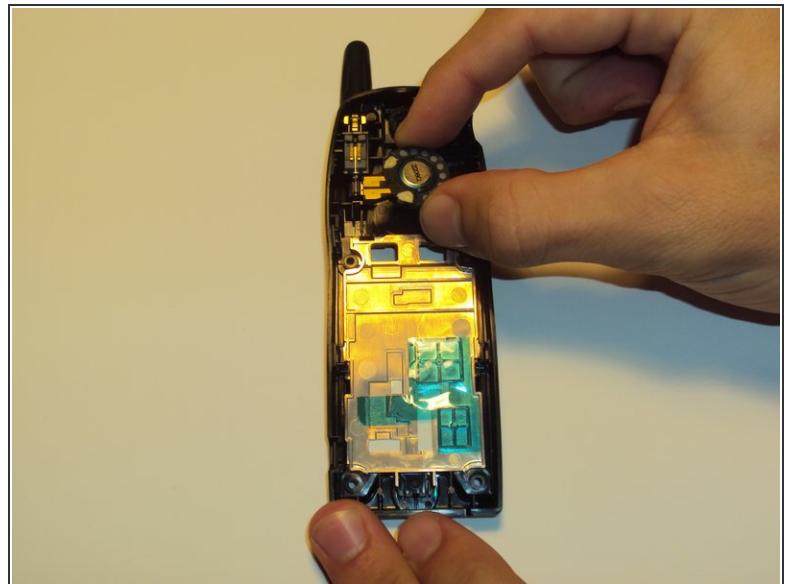
- To remove main-board from phone grab side of phone and pry upwards. Board should snap out.

## Step 7



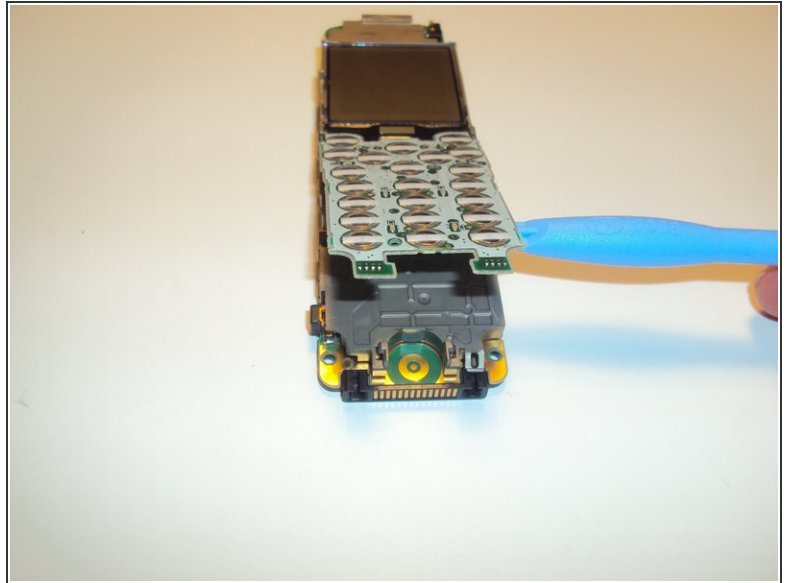
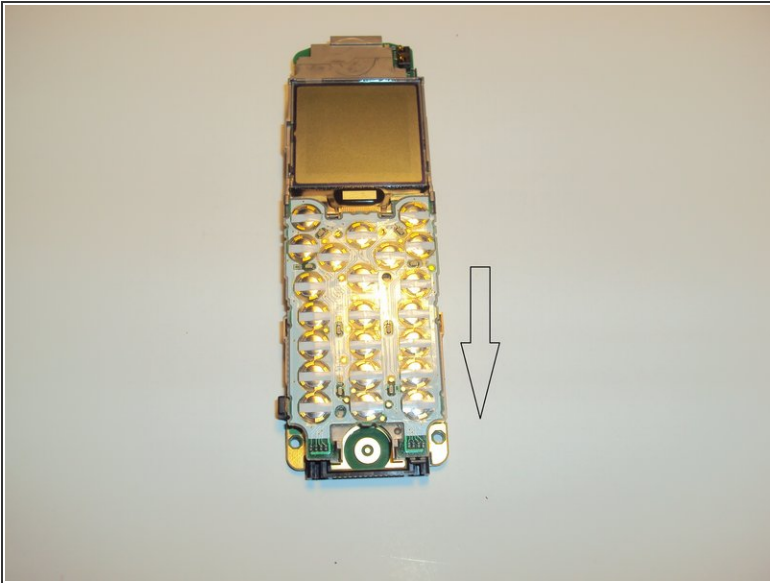
- To remove speaker cover, pull out silver plate.

## Step 8



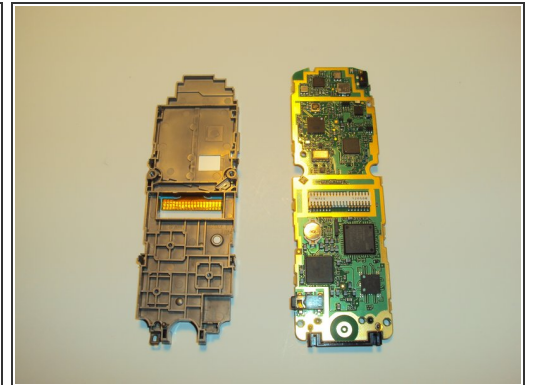
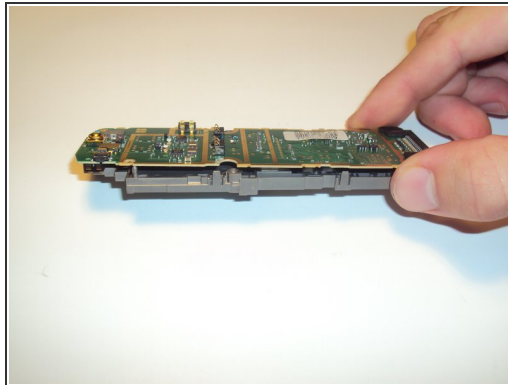
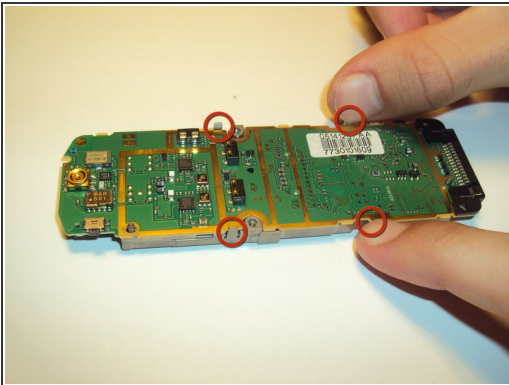
- After silver plate is removed, power button sits freely. Speaker can be removed by pulling up on it.
- If your speaker went out it can easily be replaced in this step with a new one, then reassemble phone after this step.

## Step 9



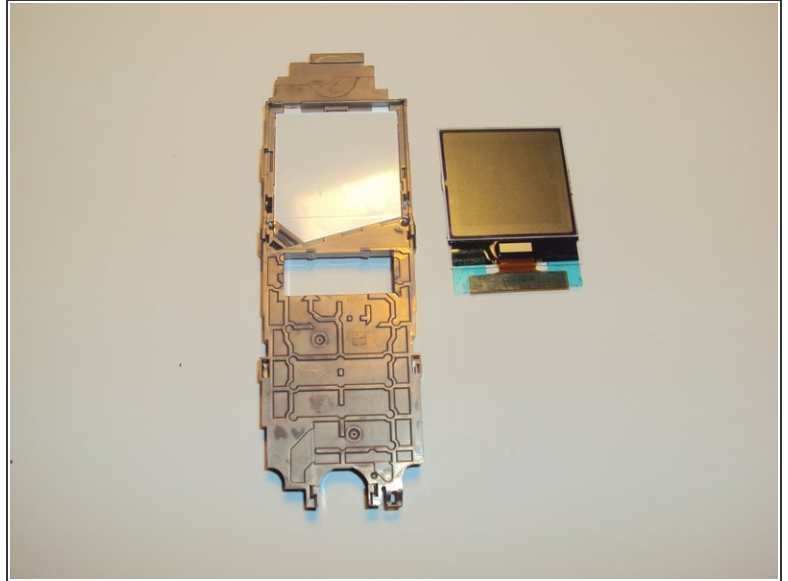
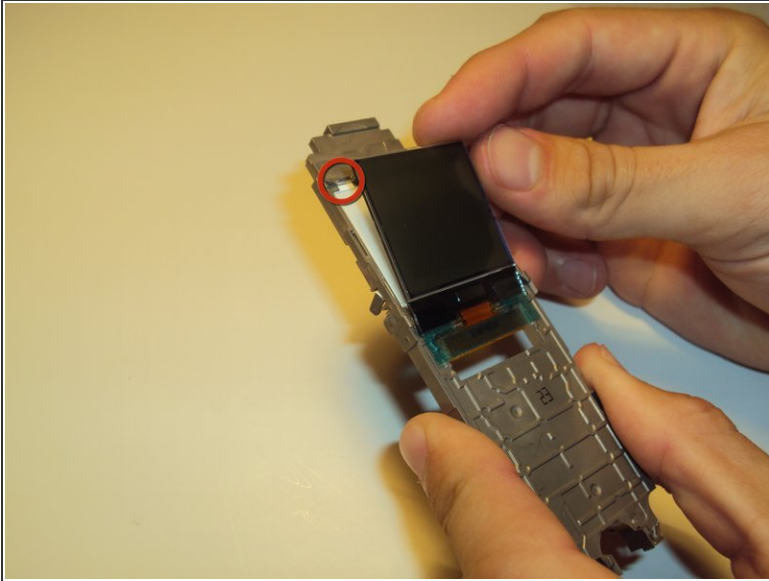
- To remove keyboard circuit press on the middle and slide down. The board will pop up allowing for removal.

## Step 10



- To remove main-board from bracket, gently apply pressure to the four small clips. Board will pop out freely.

## Step 11



- To remove LCD screen pry back on highlighted clip and pull screen out. The screen will then pull up and out.
- If the LCD screen went out, or was cracked somehow, replace with a new LCD screen and then reassemble phone from this step.

To reassemble your device, follow these instructions in reverse order.