



Panasonic HC-VX870 Shoe Adapter Replacement

Replacing the shoe adapter in the back side of the camera.

Written By: Rebecca Maloney



INTRODUCTION

Removing several sides of the camcorder and several pieces inside it in order to reach and remove the shoe adapter.



TOOLS:

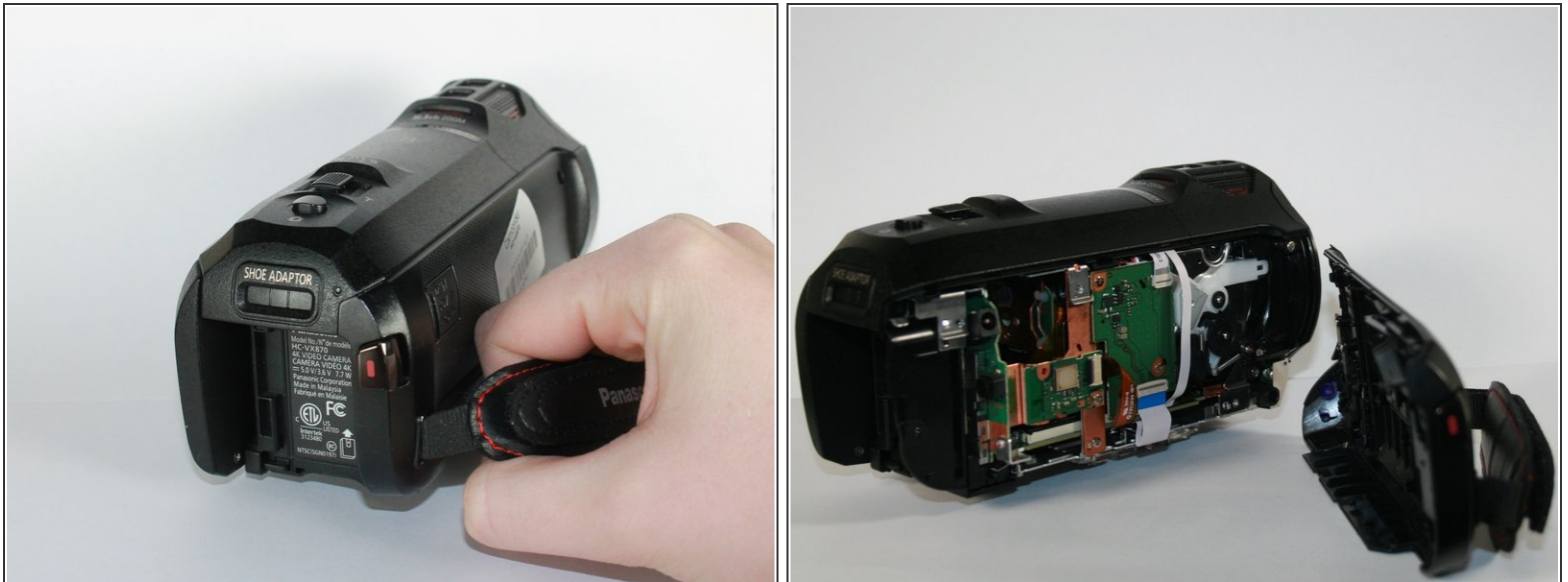
- [JIS Driver Set](#) (1)
-

Step 1 — Side Cover



- Unscrew the J1 screws on the left side of the camcorder.
- Unscrew the marked screws on the bottom of the camcorder.
- Unscrew the marked screws on the back of the camcorder.

Step 2



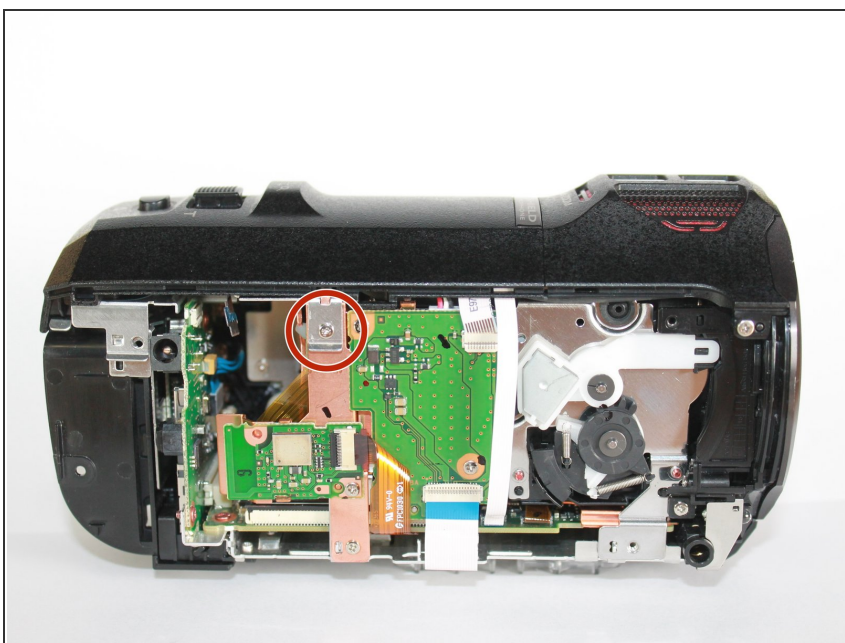
- Pull off the left side of the camcorder. You may have to use a little force but don't worry about breaking anything in the camcorder.

Step 3 — Shoe Adapter



- Unscrew the indicated screw on the right side of the camcorder.
- Unscrew the indicated screw on the back of the camcorder.

Step 4



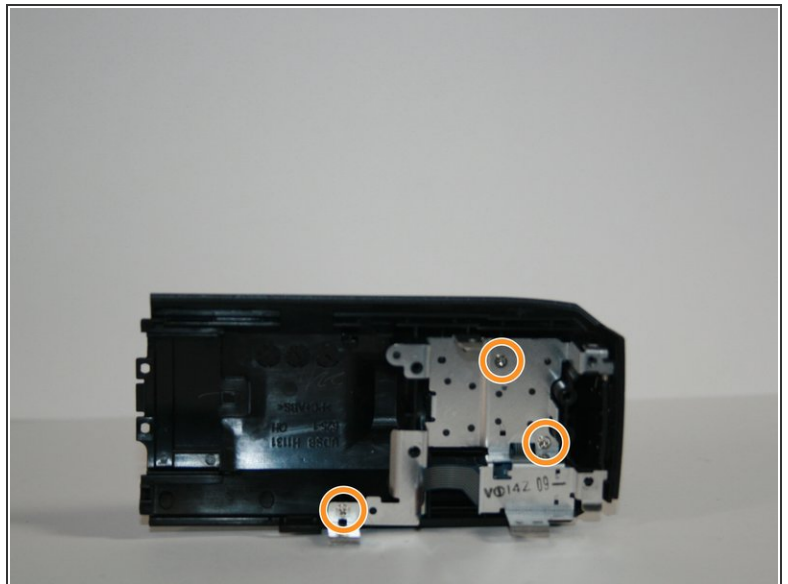
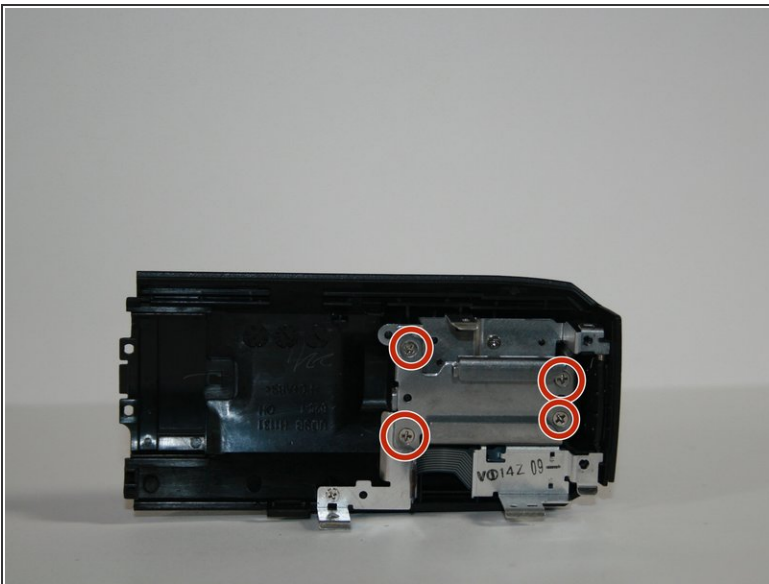
- Unscrew indicated screw on the inside of the left side of the camcorder.

Step 5



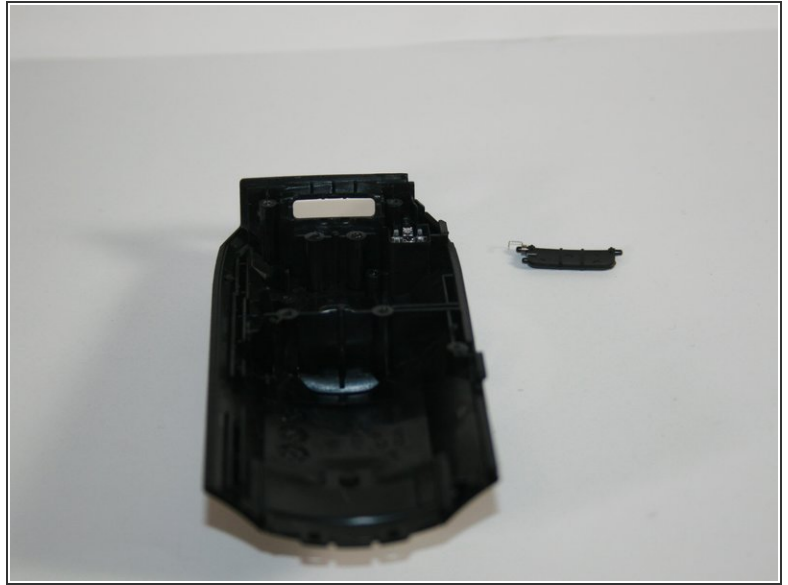
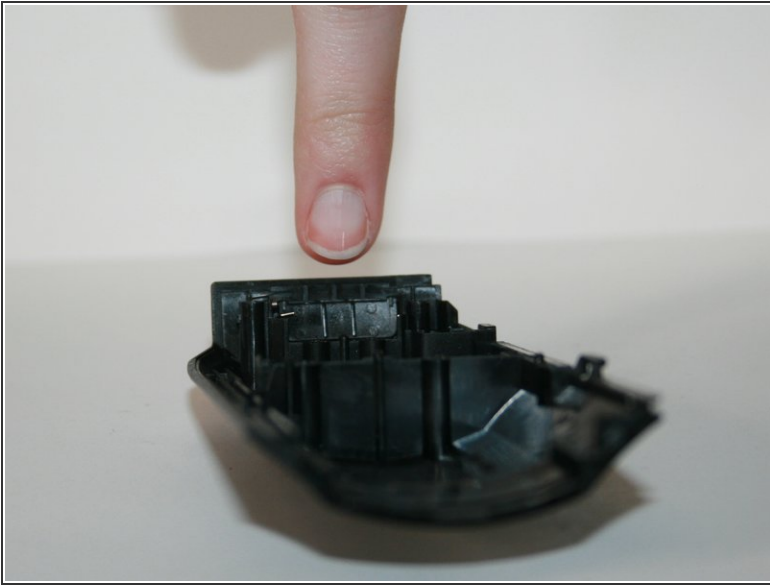
- Remove the top cover of the camcorder by lightly lifting up on the back end of the top and tugging away from the lens (don't be afraid to use force).

Step 6



- Unscrew the indicated screws and remove the piece they hold in place.
- Unscrew the indicated screws and remove the piece they hold in place.

Step 7



- Remove the shoe adapter by simply pulling it out of its place.
- ⚠ Be sure not to lose the tiny spring that is attached to the shoe adapter as you are removing it.

To reassemble your device, follow these instructions in reverse order.