



Panasonic HDC-TM15 Hand-Strap Replacement

This guide for the Panasonic HDC-TM15 will demonstrate how to replace the hand-strap located on the side cover of the camcorder.

Written By: Tricia Fallo



INTRODUCTION

The hand-strap of the Panasonic HDC-TM15 allows the user to safely handle and stabilize the camera during use. Replacing it is a straightforward process and easy to do!



TOOLS:

- [Phillips #00 Screwdriver](#) (1)
-

Step 1 — Hand-Strap



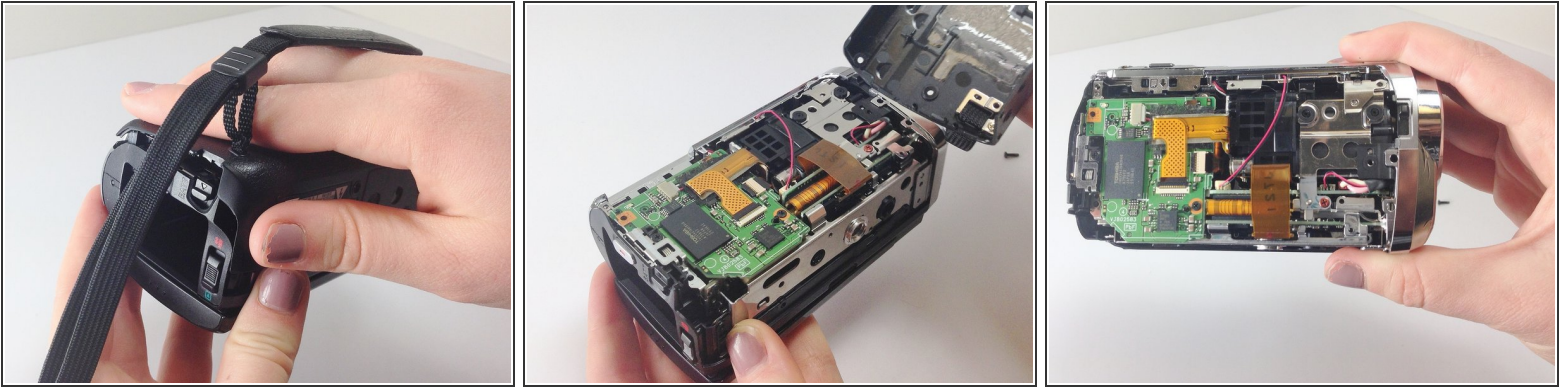
- Using the Phillips #00 Screwdriver, unscrew the five .5 mm Phillips #00 screws on the hand-strap side of the camcorder.

Step 2




- Unscrew the six .5 mm Phillips #00 screws on the bottom of the camcorder.

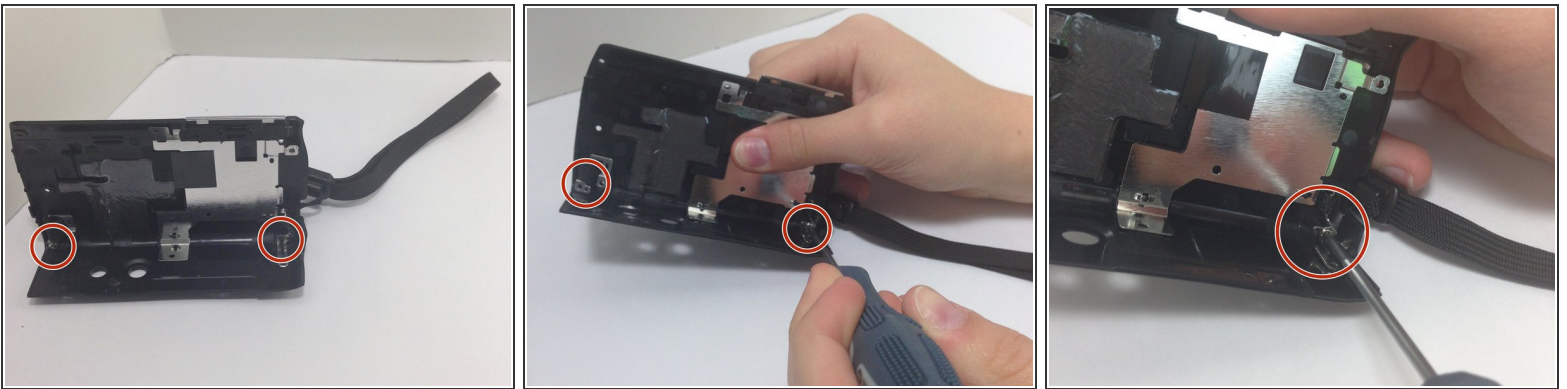
Step 3




- Once all eleven screws have been removed, put your hand through the hand-strap and tug on the side cover until it comes off completely.

 The inside of your camcorder should now be completely exposed, as shown in the photos.

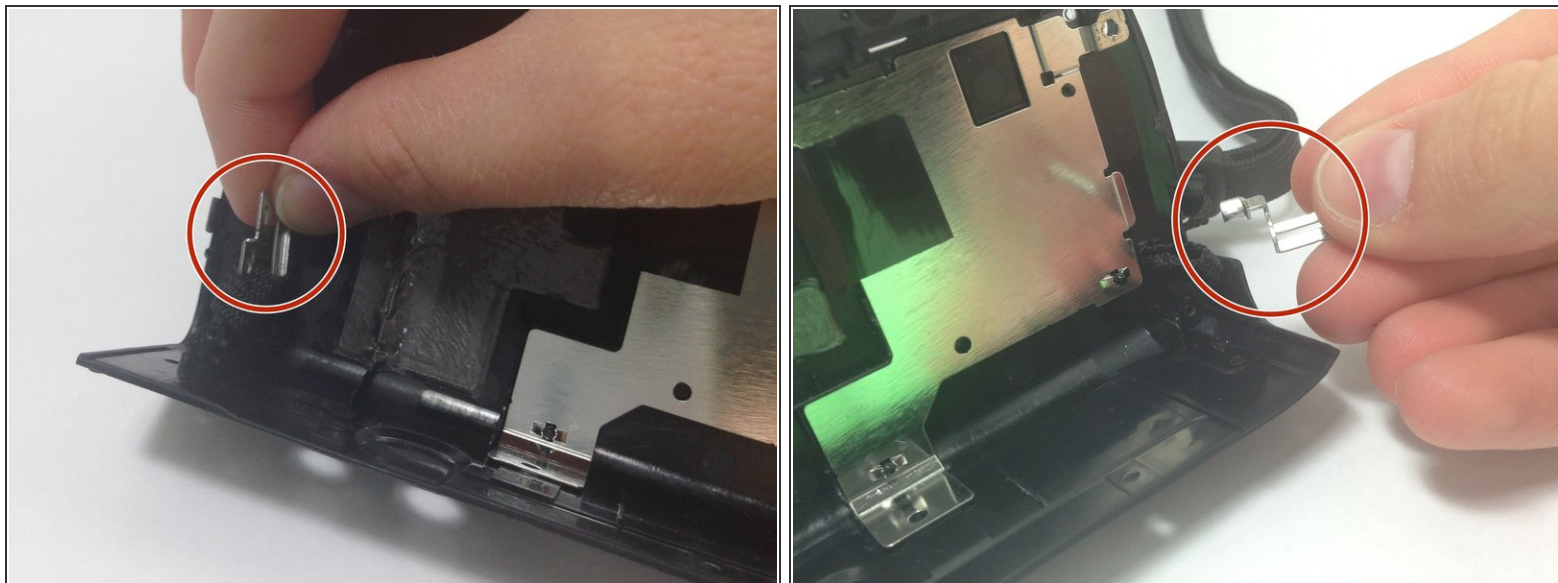
Step 4



 For the remainder of the hand-strap replacement, you will only be working with the side cover of the camcorder.

- Unscrew the two silver .5 mm Phillips #00 screws located in the bottom corners of the inside of the side cover. This will release the two silver plates that hold the hand-strap in place.

Step 5



- Remove the two silver plates from the loops of the hand-strap.

Step 6



- Pull the hand-strap through the holes of the side cover, until it is completely detached.
- Set the old hand-strap aside.

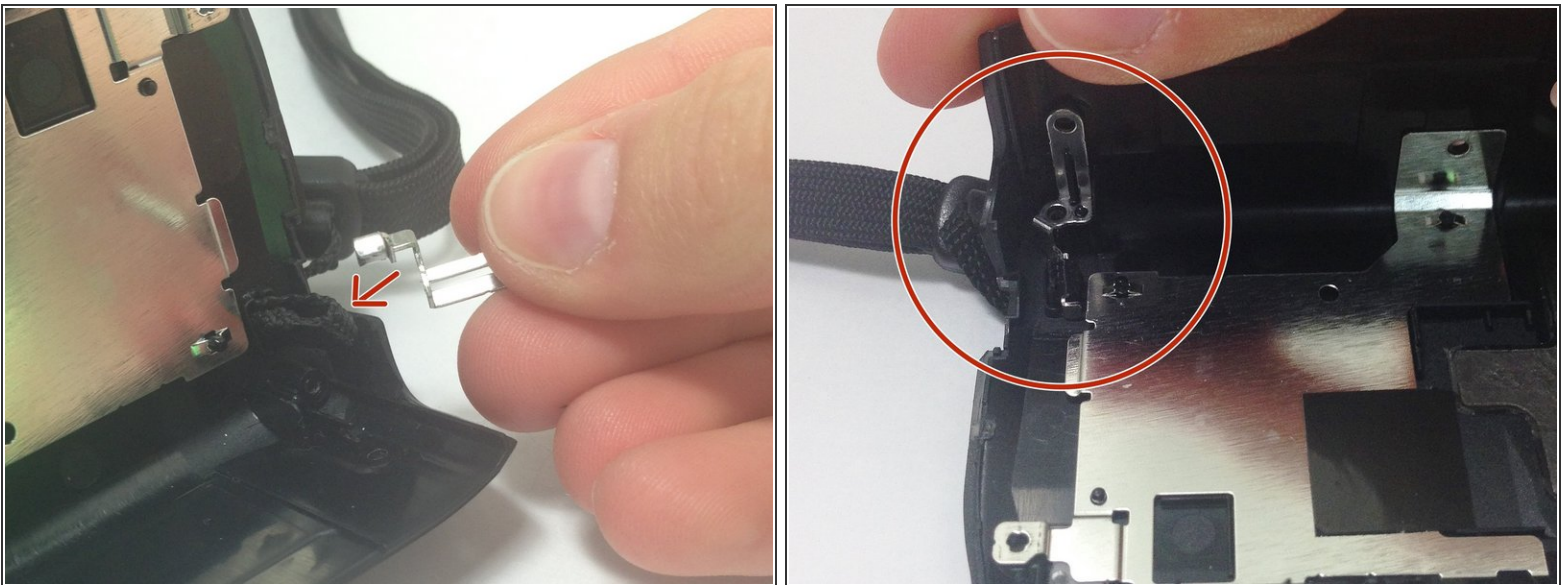
Step 7



i During these next replacement steps, the inside of the side cover should be facing you.

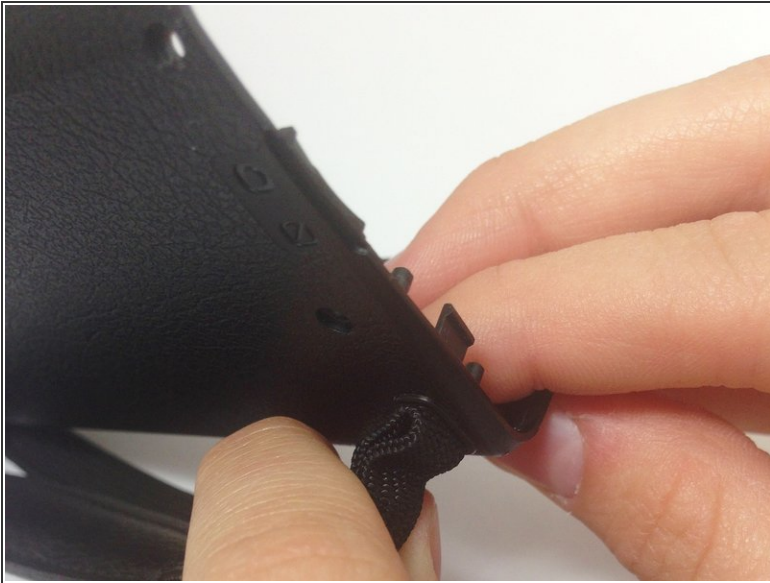
- Taking your new hand-strap, first feed the smaller loop through the bottom right hole of the side cover.

Step 8



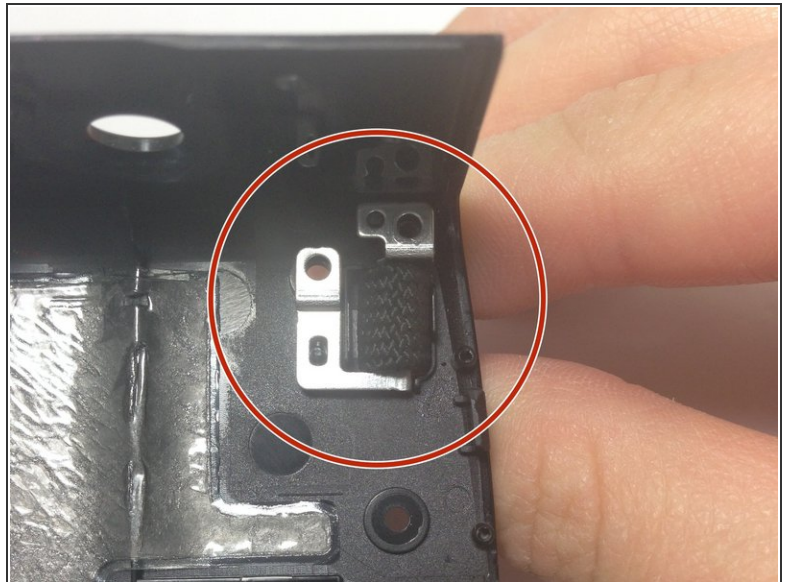
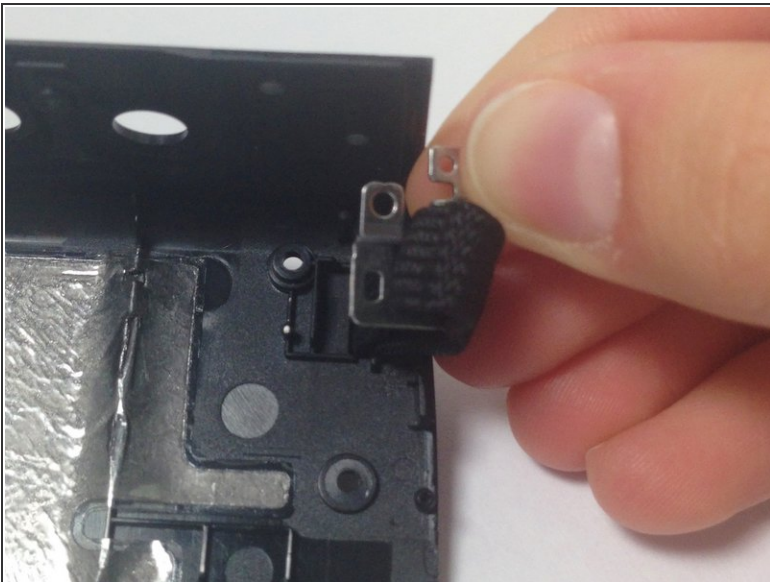
- Feed the hooked end of the smaller silver plate through the first loop of the new hand-strap.
- Slide the silver plate into place, lining up the screw holes, and screw in tightly.

Step 9



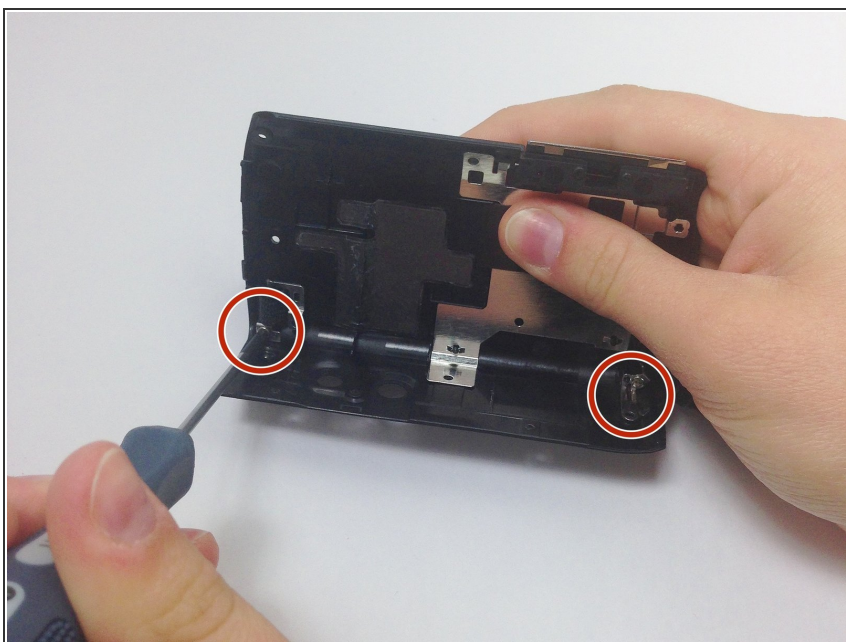
- Feed the larger loop through the hole in the opposite corner of the side cover.

Step 10



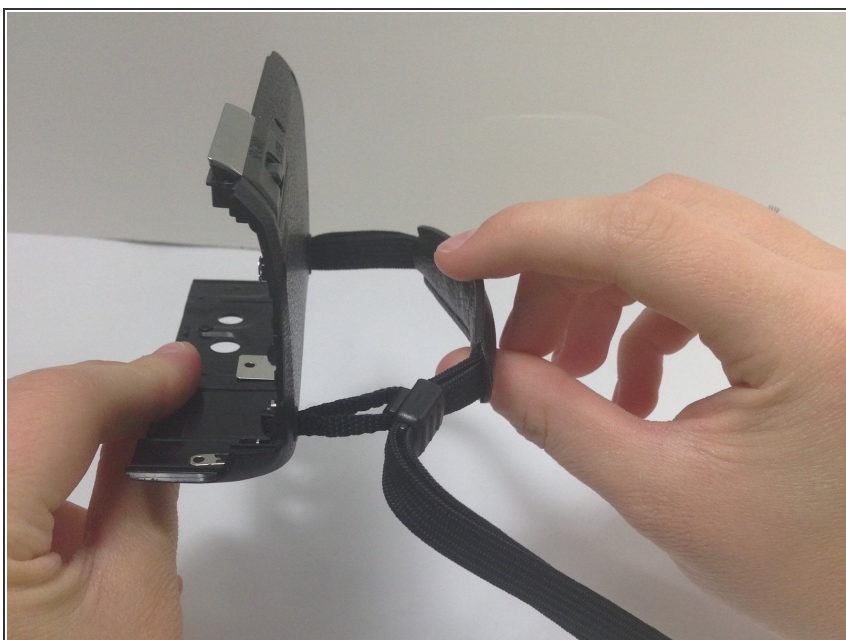
- Feed the U-shaped silver plate through the second, larger loop of the new hand-strap in the opposite corner of the side cover.
- Ensure the screw hole is lined up.

Step 11



- Re-screw the two silver screws tightly back into the silver plates.

Step 12



- Tug on the hand-strap to ensure it is securely in place.
- If your new hand-strap feels secure, you can now re-attach the side cover to your camcorder.

Step 13



- When the side cover is securely fastened, you have completed the hand-strap replacement of your Panasonic HDC-TM15 camcorder.

To reassemble your device, follow these instructions in reverse order.