



# Panasonic HDC-TM15 Record Button Replacement

This guide will help a Panasonic HDC-TM15 owner replace the broken Record button. The replacement requires only a Phillips Head #00 screwdriver.

Written By: Emma



---

## INTRODUCTION

The Record button can be found on the back end of the camera, beside the battery. If the record button is not functioning properly, it will need to be replaced. This guide will show a Panasonic HDC-TM15 owner how to remove the broken button and replace it with a new one.



### TOOLS:

- [Phillips #00 Screwdriver](#) (1)
-

## Step 1 — Record Button



- Using the Phillips #00 Screwdriver, unscrew the five .5 mm Phillips #00 screws on the hand-strap side of the camcorder.

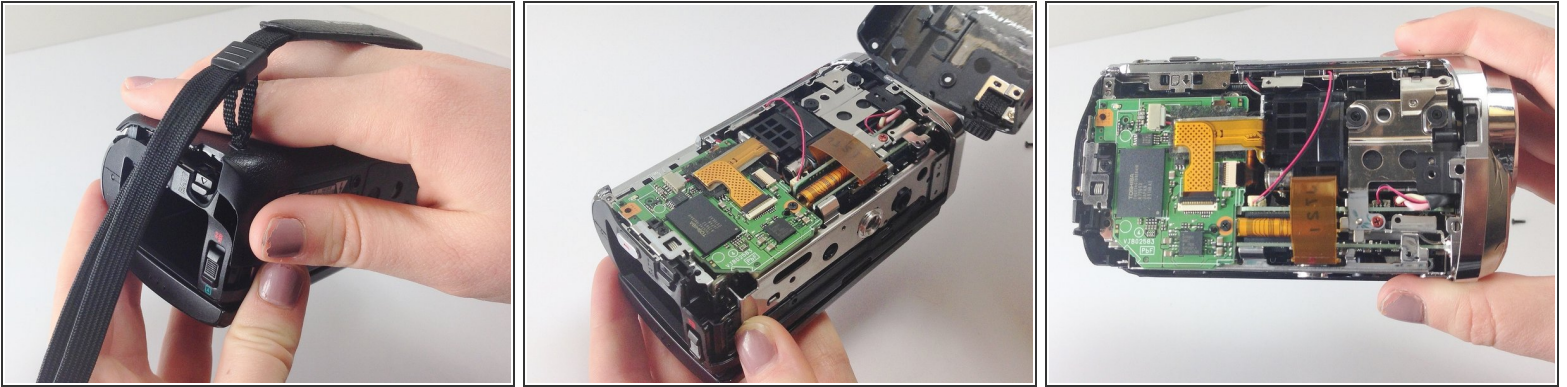
## Step 2



- Unscrew the six .5 mm Phillips #00 screws on the bottom of the camcorder.



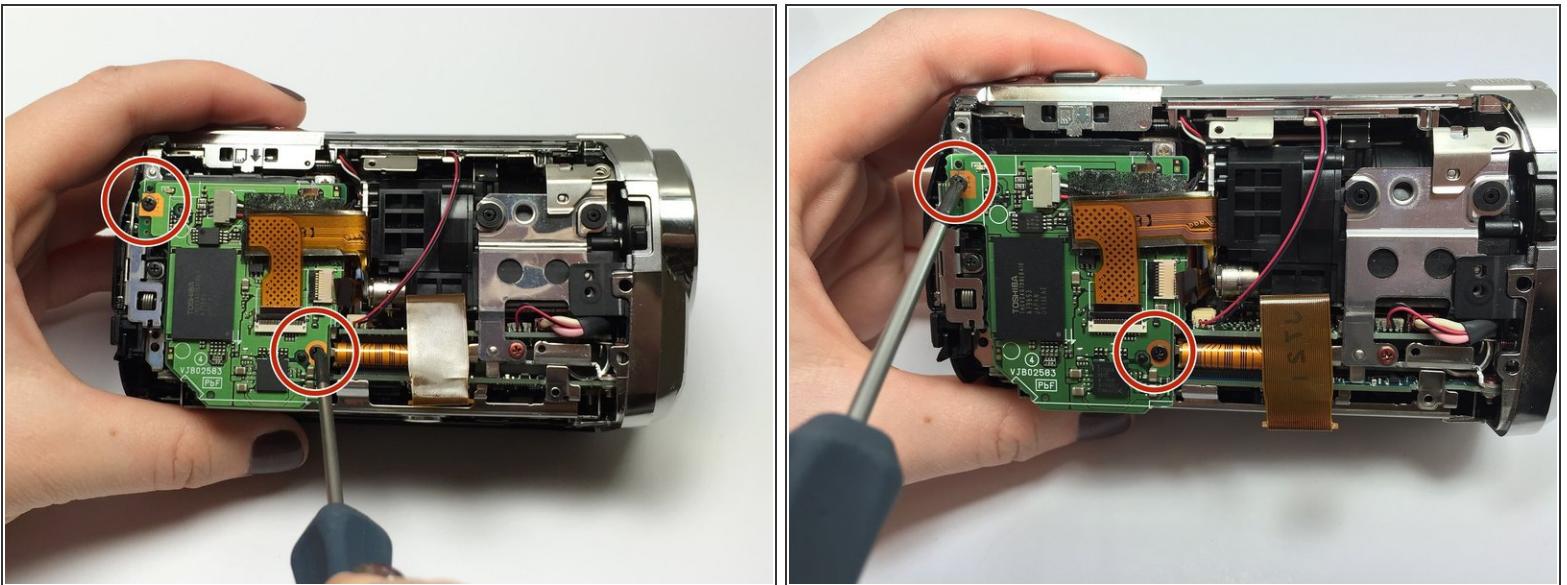
## Step 3



- Once all eleven screws have been removed, put your hand through the hand-strap and tug on the side cover until it comes off completely.

**i** The inside of your camcorder should now be completely exposed, as shown in the photos.

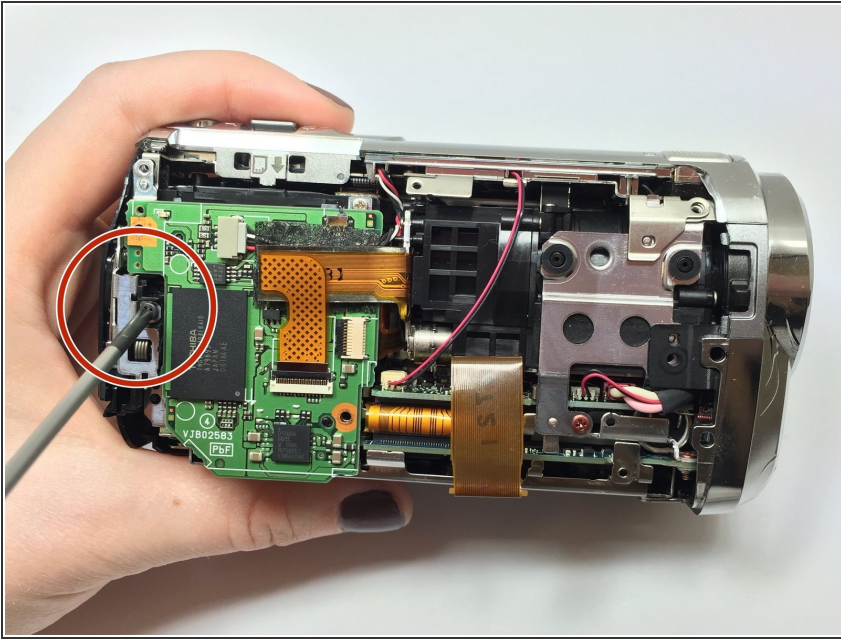
## Step 4



- Unscrew the two 1 mm Phillips #00 black screws in the corners of the green memory card reader.

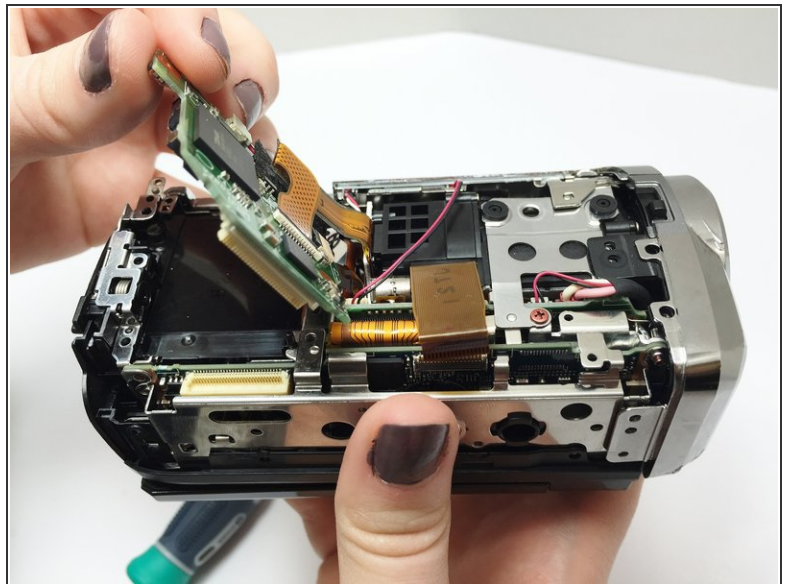
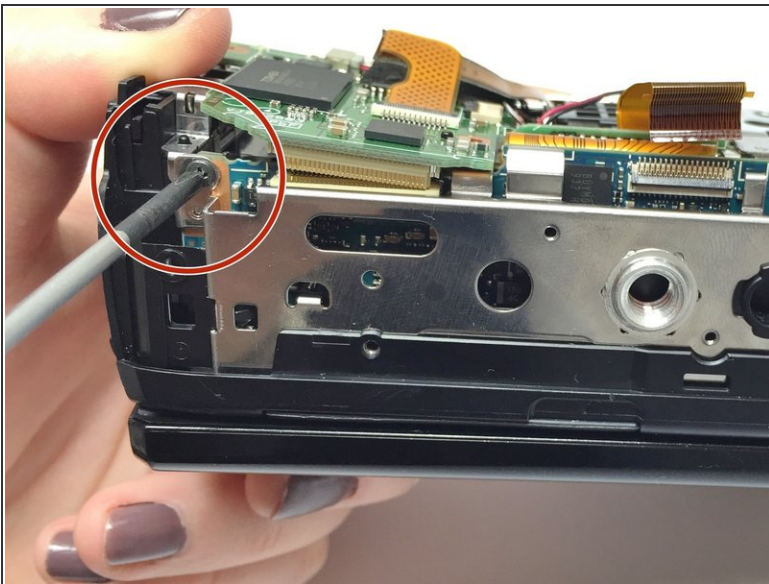
**i** The screws should be surrounded by orange circles.

## Step 5




- Unscrew the black 1 mm Phillips #00 black screw in the left center beside the green motherboard.

## Step 6

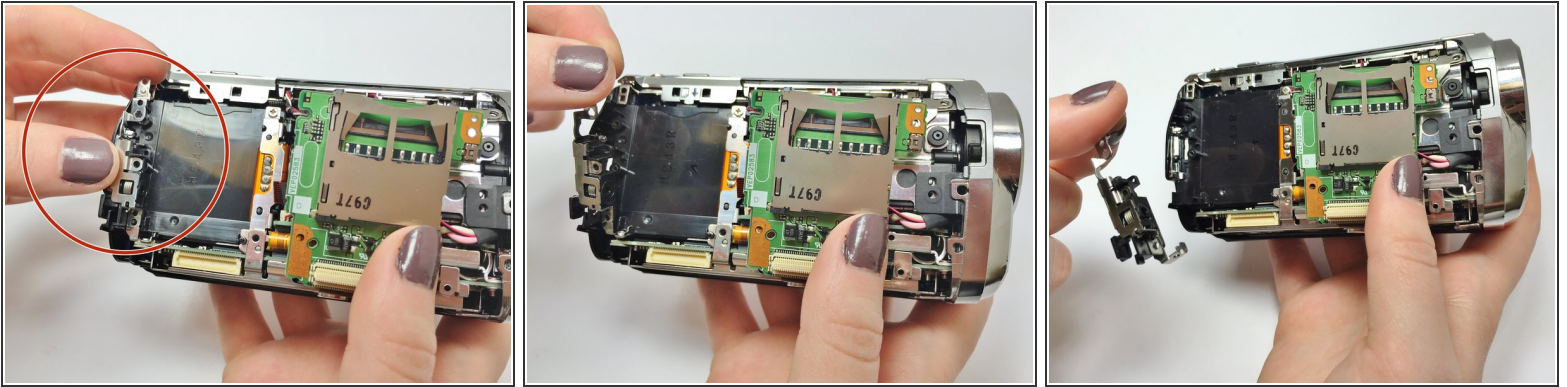


- Unscrew the 1.2 mm Phillips #00 black screw beneath the motherboard on the bottom of the camcorder.

 The green motherboard should now be partially detached, as shown in the photo.

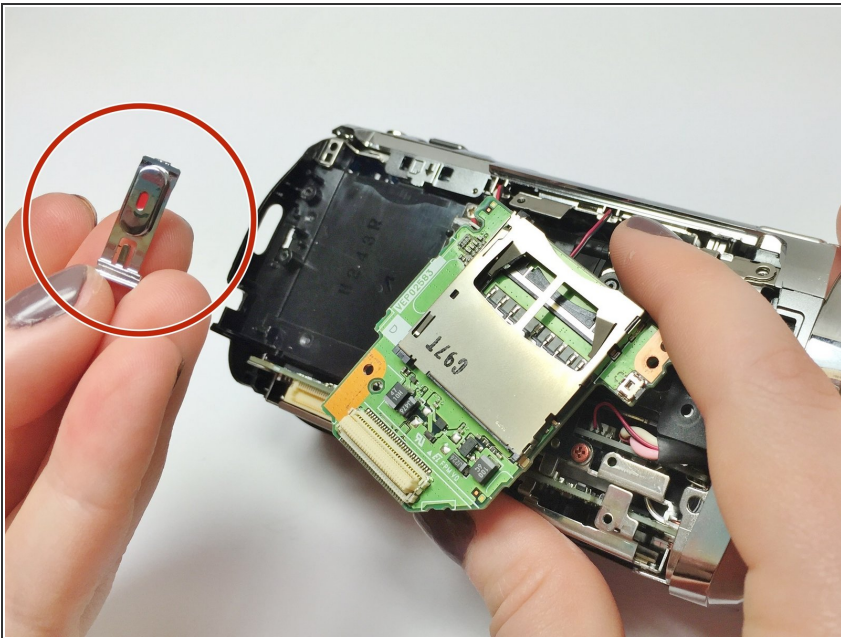


## Step 7



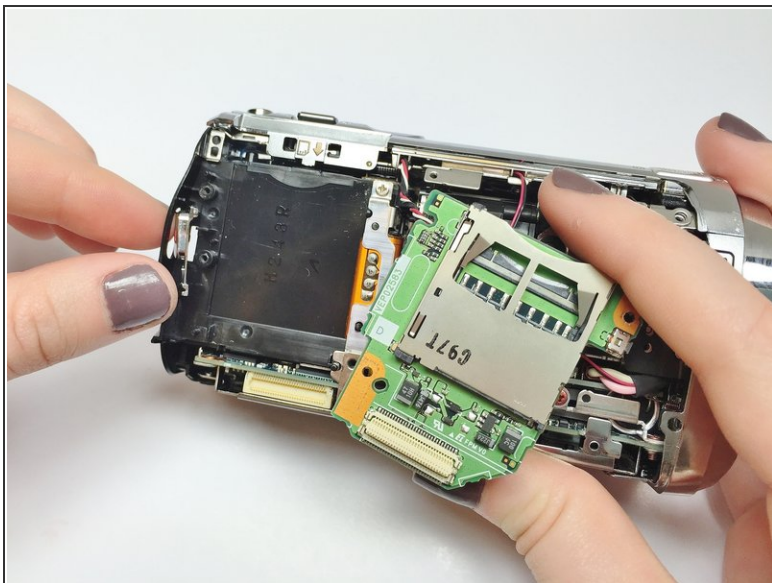
- Remove the long silver plate that secures the record button.

## Step 8



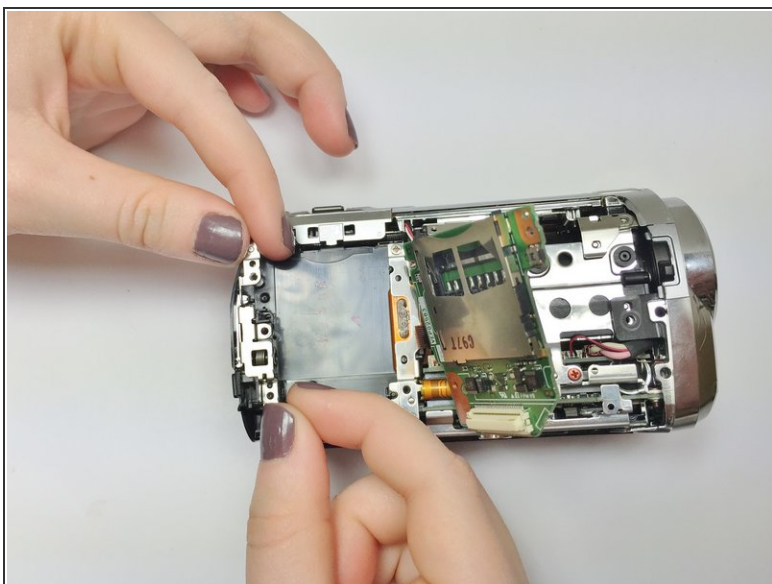
- Remove the old record button from beneath the silver plate.

## Step 9



- Place the new Record button into the open slot.

## Step 10

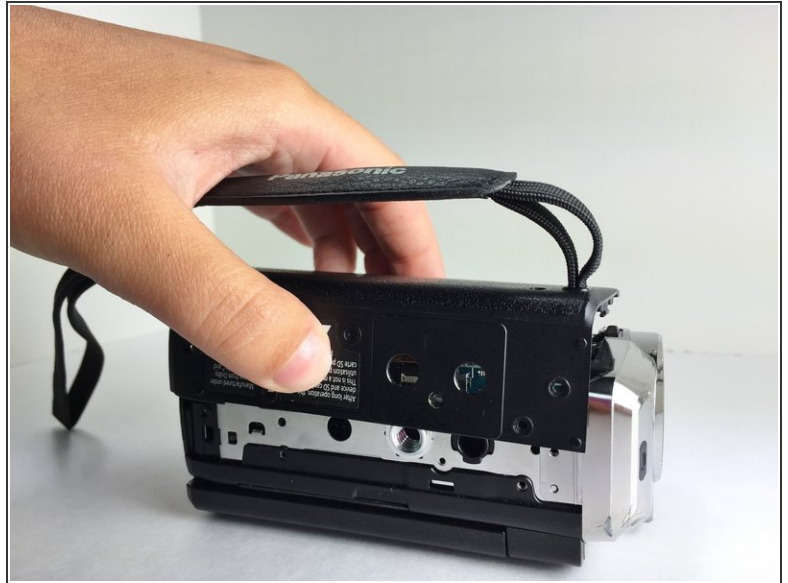
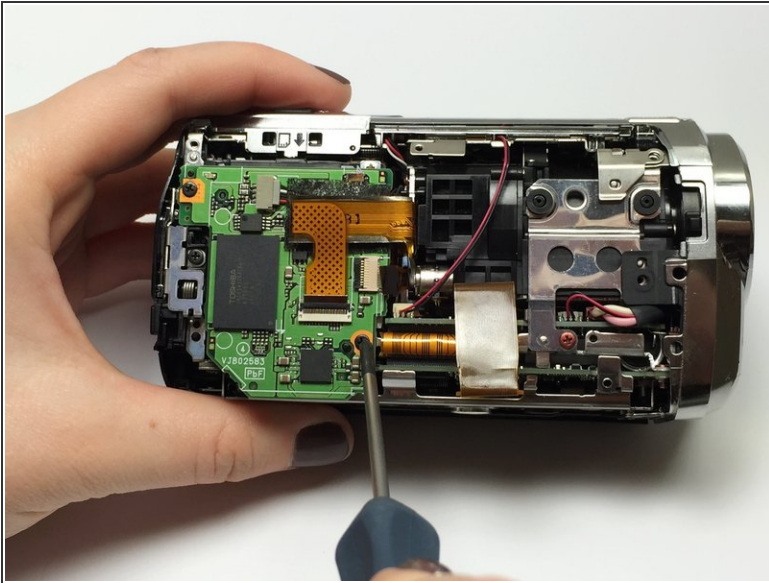


- Slide the silver plate into place beside the new Record button.

- ⓘ Ensure that the Battery Eject button is lined up properly.



## Step 11



- Re-screw the green motherboard into place and re-attach the side cover to your camcorder.
- When the side cover is securely fastened, you have completed the Record Button replacement of your Panasonic HDC-TM15 camcorder.

To reassemble your device, follow these instructions in reverse order.