



# Panasonic HDC-TM90 LCD Screen Replacement

Disassemble the camcorder and remove the LCD Screen.

Written By: BayleeVersteeg





## TOOLS:

- [JIS #000 Screwdriver](#) (1)
-

## Step 1 — Battery



- Open the LCD screen.

## Step 2



- Slide the battery release switch away from the battery.

### Step 3



- While holding the switch away from the battery, push the battery out of the slot.

### Step 4



- Remove the battery from the camera.

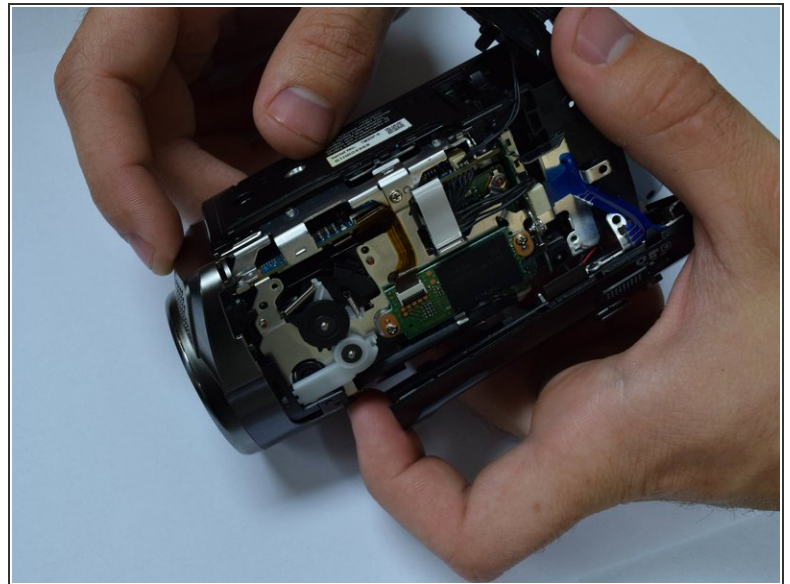
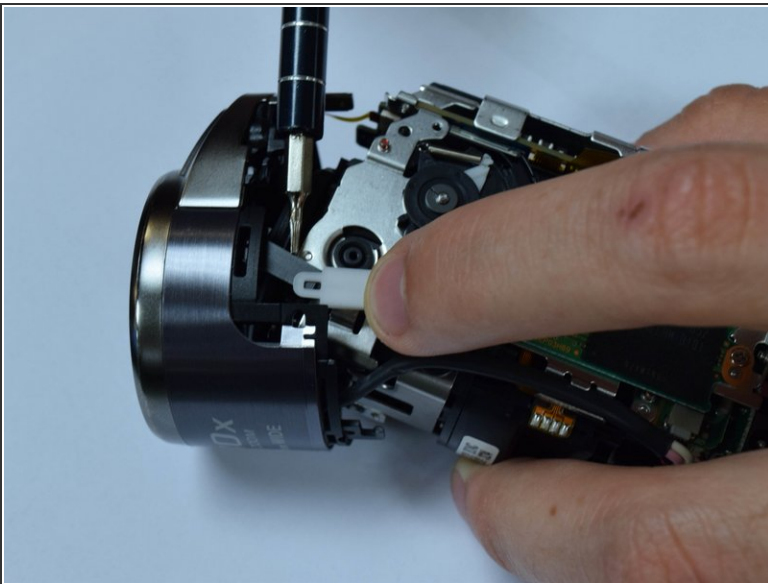


## Step 5 — Panasonic HDC-TM90 Lens Clean



- Remove 5 screws from the side panel body of the camcorder.
- Use the spudger to remove the top of the camcorder.

## Step 6



- Unscrew three screws to remove the lens rim on the front of the camcorder.

⚠ Be aware of the wires attaching the lens rim to the body of the camcorder. You will not be able to separate the lens rim completely.

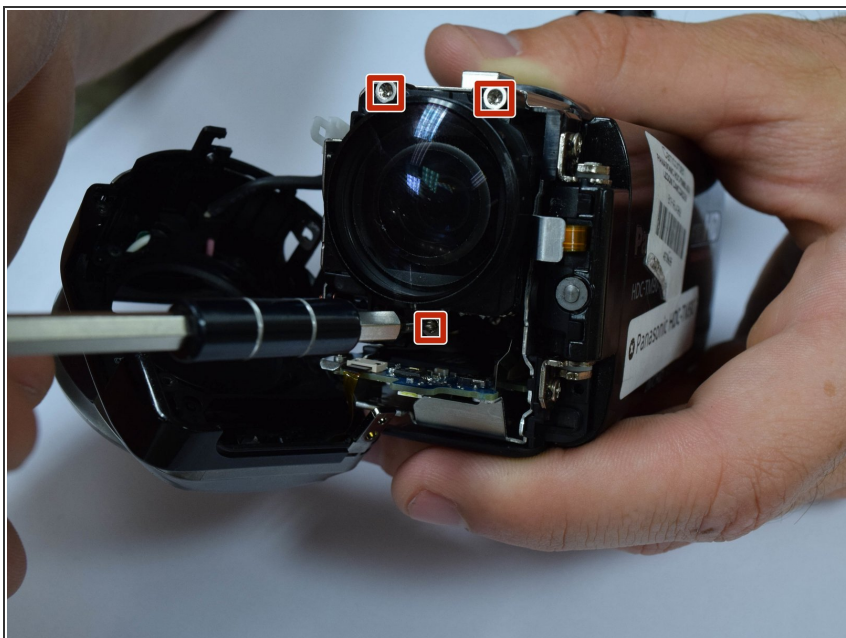
⚠ Use caution when separating the shutter lever.

## Step 7



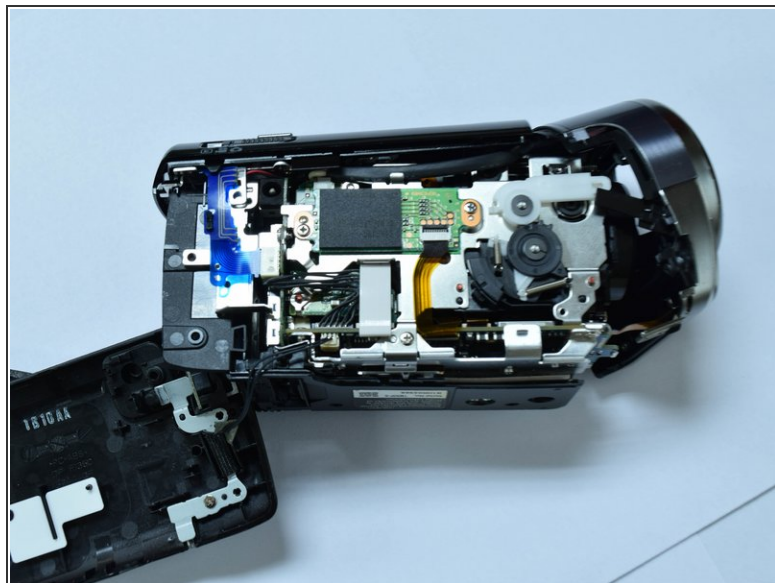
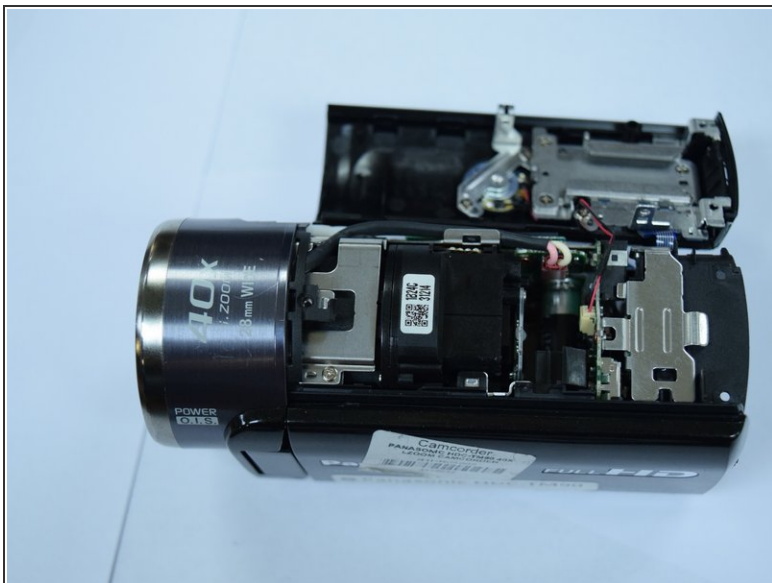
- Remove the rubber ring around the lens.

## Step 8



- Unscrew the lens by removing the three screws connected to it.

## Step 9 — LCD Screen



- Remove the side panel of the camcorder.
- Remove the top panel of the camcorder.
- For help with this step see prerequisite guide: Lens Clean.

## Step 10



- Open camcorder screen.



## Step 11



- Turn the LCD screen perpendicular to the camcorder.
  - Remove the screws.
- ⚠ Have caution when you remove the screen. There is a wire connecting it to the rest of the camera that should not be detached.

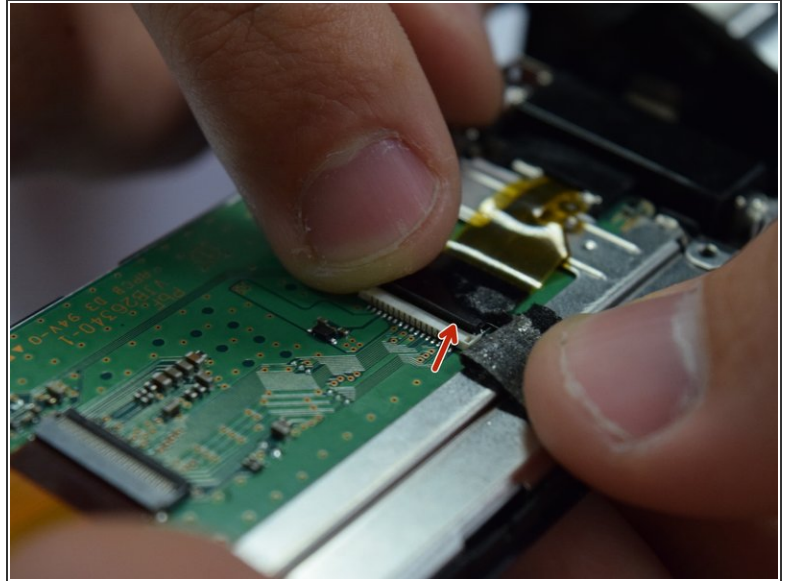
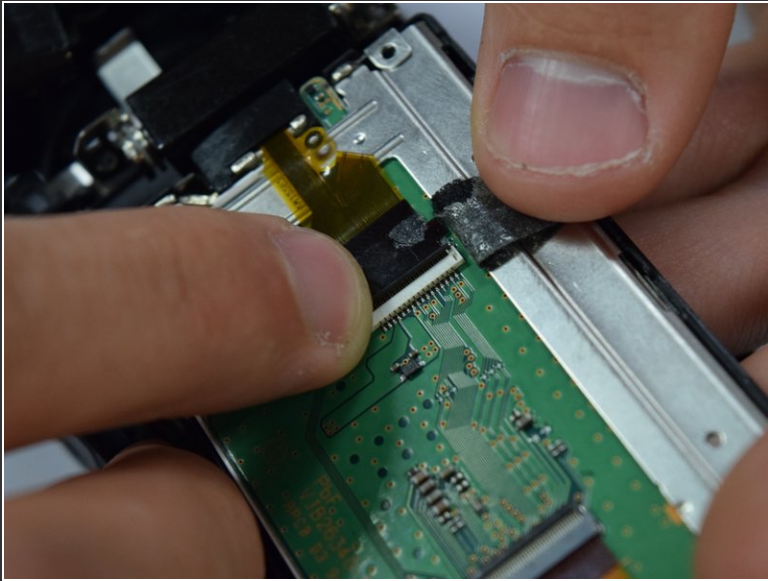
## Step 12



- Carefully pry the plastic backing on the screen using a metal spudger.

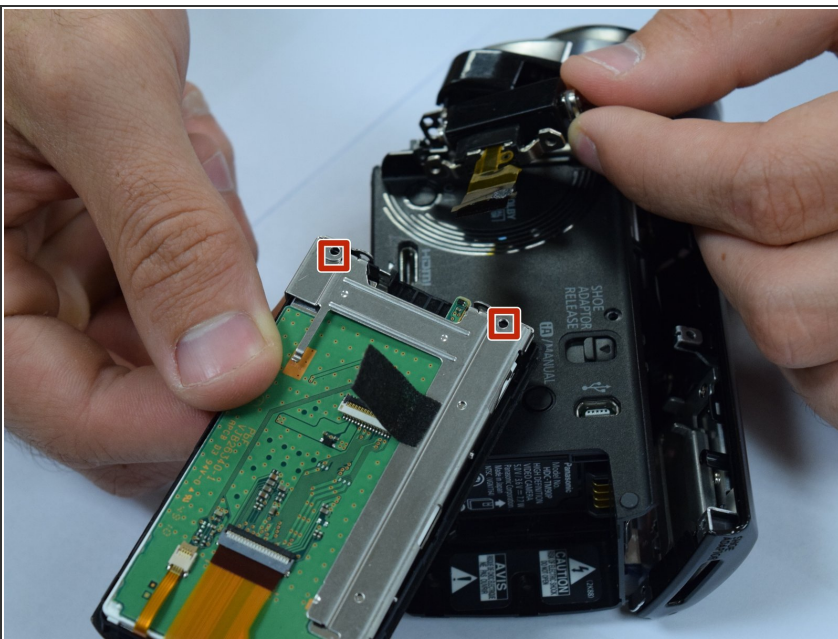


## Step 13



- Peel back the black tape holding the wire strip to the camcorder screen.
- Unclip the small latch from the wire strip.

## Step 14



- Remove the screws from the metal frame.
- ⚠ Be careful when holding the screen after the frame has been unscrewed. The screen and all of its components are unattached and can fall apart.

To reassemble your device, follow these instructions in reverse order.