



Panasonic KX-TG6641 Base Display Screen Replacement

This guide will instruct users how to replace the display screen on the charging base of their unit.

Written By: Joseph Byrne



INTRODUCTION

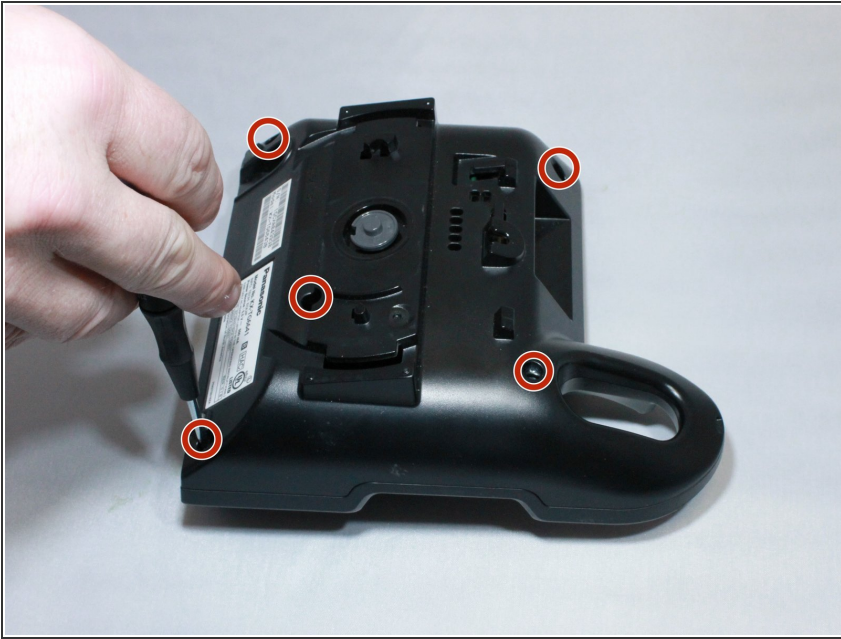
Use this guide in order to correctly replace the display screen on the charging base of the device. Display screens may become cracked or dysfunctional due to normal wear or accidents. By replacing the display, users will be able to operate features such as caller ID more easily.



TOOLS:

- [Phillips #0 Screwdriver](#) (1)
 - [iFixit Opening Tools](#) (1)
-

Step 1 — Base Display Screen



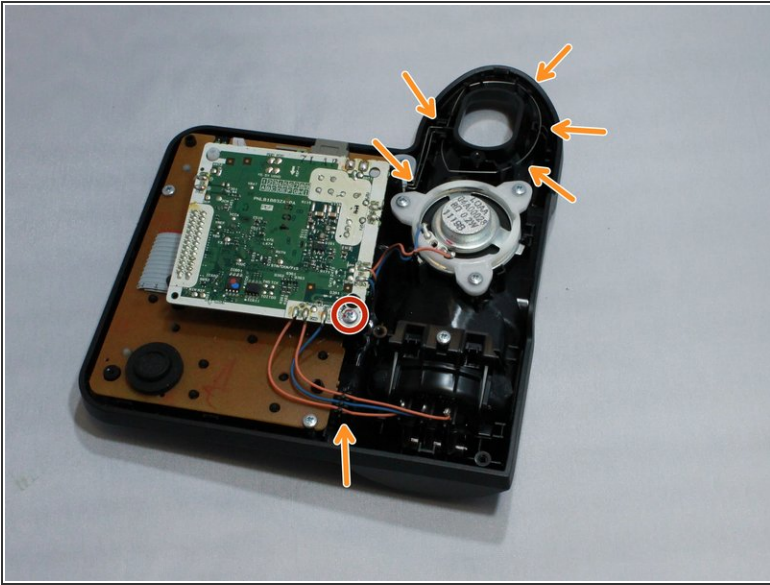
- Remove back by unscrewing the 5 screws at the corners and in the middle of the charging base using a small Phillips screwdriver,.

Step 2



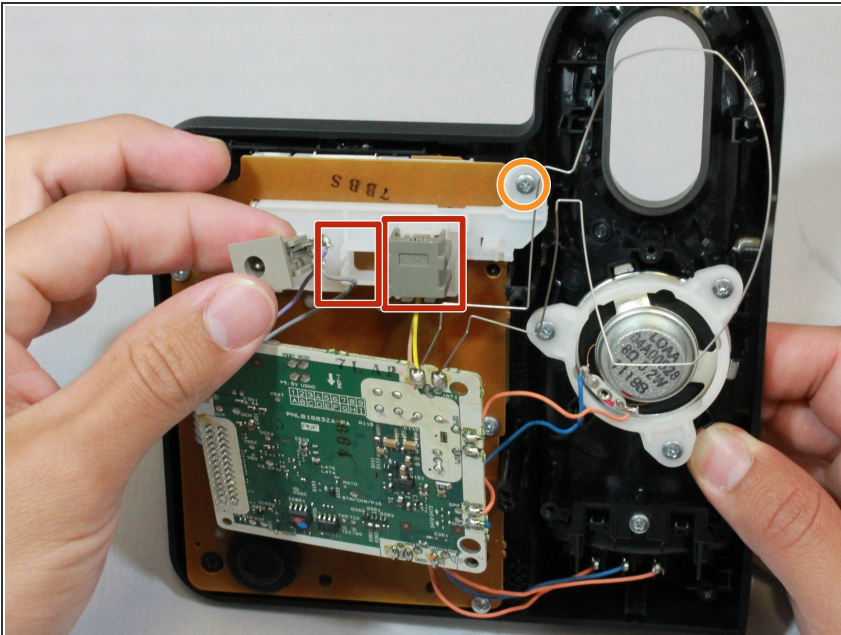
- To remove back cover, pry the back open by using the iFixit Opening tool in the space between the front and back of the charging base.

Step 3



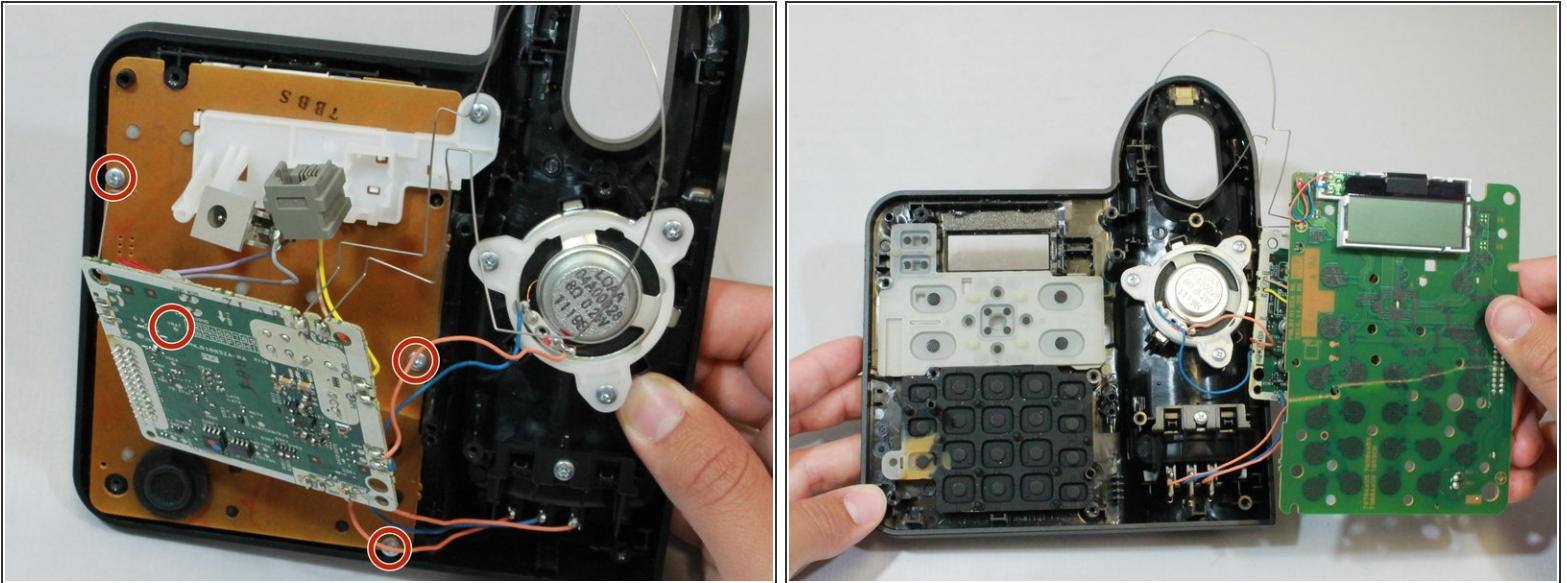
- To access to display screen, unscrew the screws on the electrical panel and unclip wires hooked in to base.

Step 4



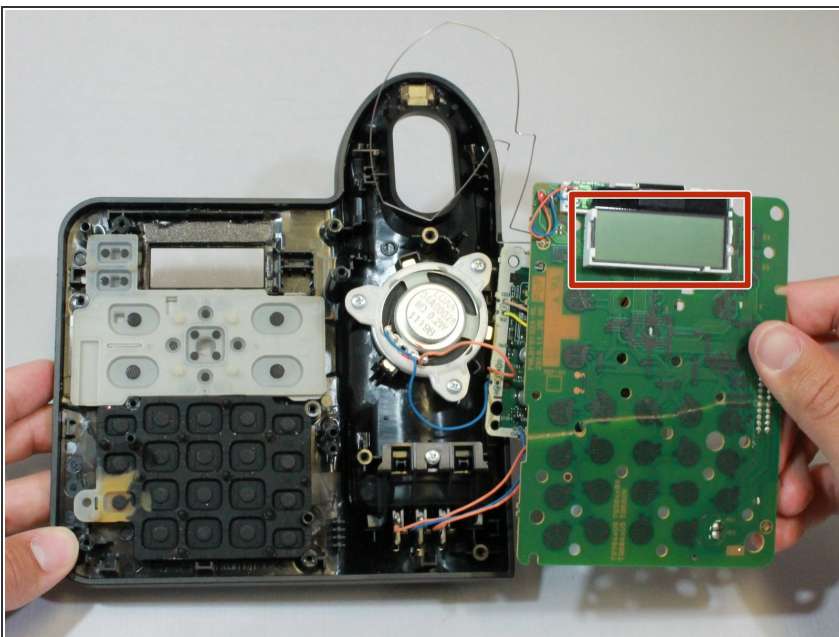
- Unlatch two phone cable connectors and unscrew the screw in order to remove the plastic holder for the connectors.

Step 5



- Once the electrical panel is released, unscrew the four screws from the brown plate and lift to access display screen.
- Be aware that there is a screw under the control panel not visible in the picture but indicated with a red circle.

Step 6



- Replace the display screen by unlatching it from the electrical panel and placing the new screen in its place.

To reassemble your device, follow these instructions in reverse order.