



Panasonic LUMIX DMC-LX100 LCD Screen Replacement

This guide will show you step by step instructions on how to replace a faulty LCD screen.

Written By: Annie Borland



INTRODUCTION

Is your screen cracked? Are you unable to see pictures after you take them? The problem could be a broken or faulty LCD screen. This guide will show you how to fix it.




TOOLS:

- [Heavy-Duty Spudger](#) (1)
 - [Phillips #000 Screwdriver](#) (1)
-

Step 1 — Battery



- Looking at the bottom of the camera, slide the OPEN/LOCK switch to the left into the OPEN position.

 The battery housing door should swing open.

Step 2



- Flip the inside switch up to release the battery.

Step 3



- Grip the edge of the battery and pull it out.
- ⓘ Use a LUMIX Panasonic DMW-BLE9PP Battery Pack for replacement.

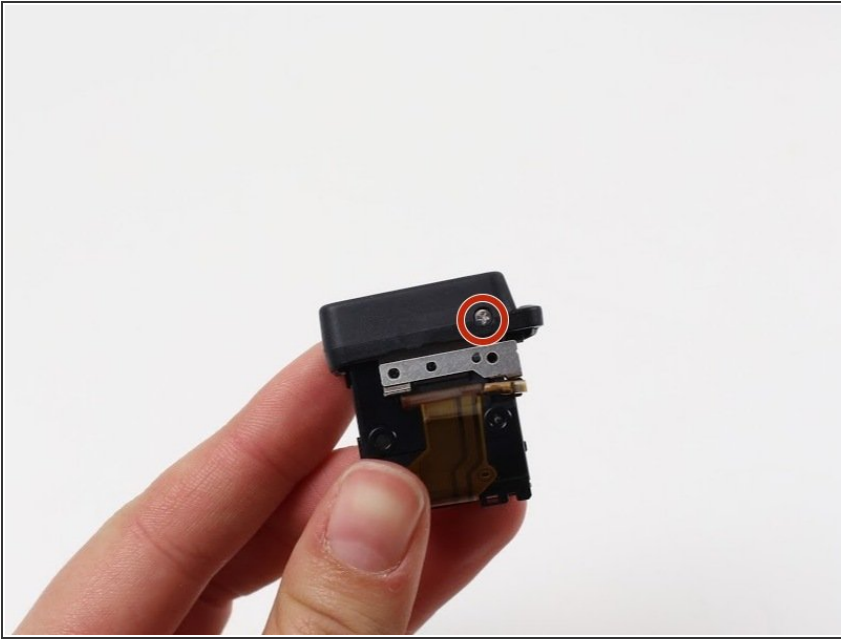
Step 4 — LCD Screen



⚠ Some of these screws may have adhesive to keep the camera from being taken apart so push hard with the screwdriver and turn slowly to avoid stripping screws.

- Use a Phillips #000 screwdriver to remove the five 4.5 mm screws located on the bottom of the camera and the top one on the left side, with the lens facing you.
- Use a Phillips #000 screwdriver to remove the two 3.5 mm screws, one below the lens and one on the left side.
- Use a Phillips #000 screwdriver to remove the 7.1 mm screw from the right side of the camera.

Step 5



- i** The viewfinder in this picture is taken off of the camera to more easily see where the screw is located. It is not actually removed from the camera.
- Use a Phillips #000 screwdriver to remove the 2.5 mm screw underneath the viewfinder.
- Pull the black plastic piece off of the viewfinder.

Step 6



- Slide out the black plastic piece that acts as a placeholder for an attachable lens on the top of the camera.
- Remove the small metal insert that rests beneath the black plastic piece by pulling outward, away from the lens side of the camera.
- i** You may need a spudger or prying device to remove the metal piece by lifting the back end up.

Step 7



- ⚠ Some of these screws may have adhesive to keep the camera from being taken apart so push hard with the screwdriver and turn slowly to avoid stripping screws.
- Use a Phillips #000 screwdriver to remove all four of the 7.1mm screws that are under the metal piece.

Step 8



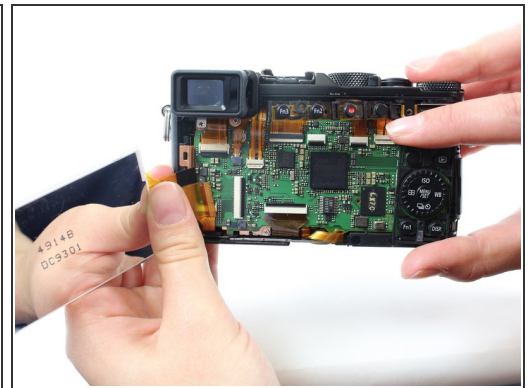
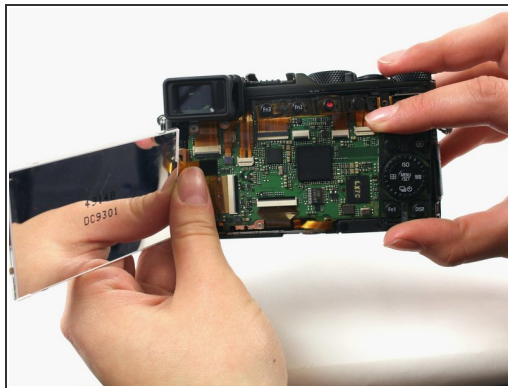
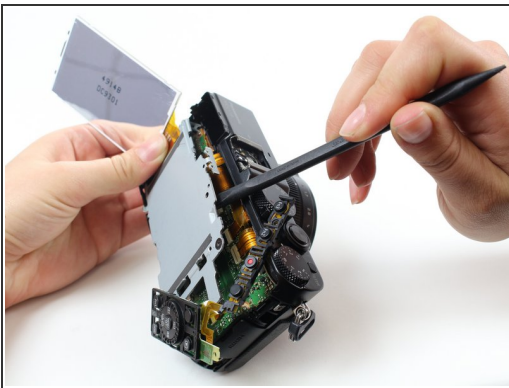
- ⚠ There may be adhesive holding the back on, so pry carefully to not break any of the ribbon cables underneath.
- Pry off the back of the camera using a spudger starting from the top right side of the LCD screen.

Step 9



- Use a Phillips #000 screwdriver to remove the 7.5mm screw on the top right of the back of the camera that holds the metal backing in place.

Step 10



- Lift the LCD screen away from the device.
- Pry off the silver metal backing with a spudger.
- Pull out the ribbon cable that attaches the LCD screen to the motherboard.
- ❗ If need be, use a plastic spudger to pry the ribbon cable out of its socket.
- Remove the LCD screen.

To reassemble your device, follow these instructions in reverse order.