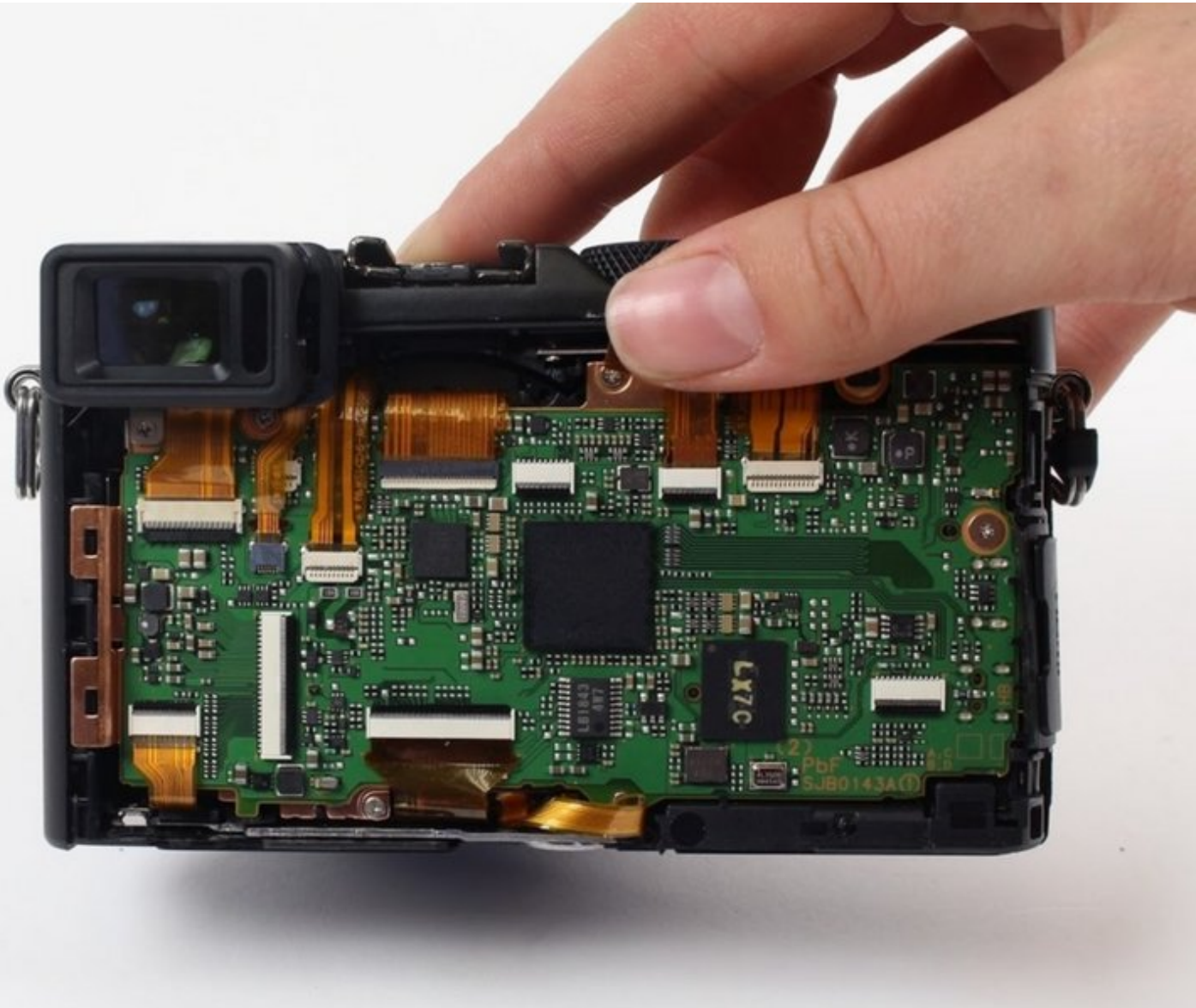




Panasonic LUMIX DMC-LX100 Motherboard Replacement

This guide will help you to replace a broken or faulty motherboard in your camera.

Written By: Sydney Dye



INTRODUCTION

Is your camera still not turning on even with a working battery? Are your pictures not storing properly? Is your screen working, but still not displaying pictures? These problems may be due to a broken or faulty motherboard.


TOOLS:

- [Heavy-Duty Spudger](#) (1)
 - [Tweezers](#) (1)
 - [Phillips #000 Screwdriver](#) (1)
-

Step 1 — Battery



- Looking at the bottom of the camera, slide the OPEN/LOCK switch to the left into the OPEN position.

 The battery housing door should swing open.

Step 2



- Flip the inside switch up to release the battery.

Step 3



- Grip the edge of the battery and pull it out.
- ⓘ Use a LUMIX Panasonic DMW-BLE9PP Battery Pack for replacement.

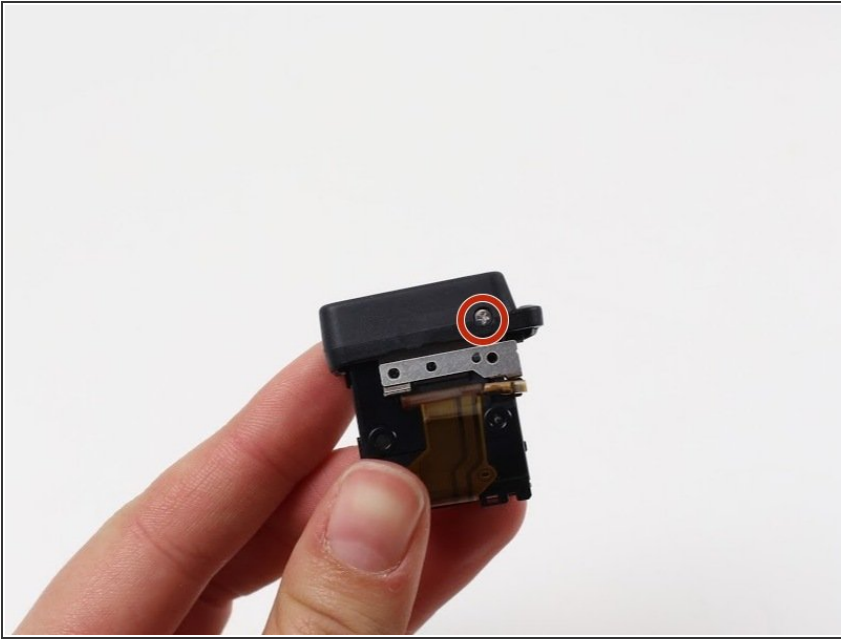
Step 4 — LCD Screen



⚠ Some of these screws may have adhesive to keep the camera from being taken apart so push hard with the screwdriver and turn slowly to avoid stripping screws.

- Use a Phillips #000 screwdriver to remove the five 4.5 mm screws located on the bottom of the camera and the top one on the left side, with the lens facing you.
- Use a Phillips #000 screwdriver to remove the two 3.5 mm screws, one below the lens and one on the left side.
- Use a Phillips #000 screwdriver to remove the 7.1 mm screw from the right side of the camera.

Step 5



- i The viewfinder in this picture is taken off of the camera to more easily see where the screw is located. It is not actually removed from the camera.
- Use a Phillips #000 screwdriver to remove the 2.5 mm screw underneath the viewfinder.
- Pull the black plastic piece off of the viewfinder.

Step 6



- Slide out the black plastic piece that acts as a placeholder for an attachable lens on the top of the camera.
- Remove the small metal insert that rests beneath the black plastic piece by pulling outward, away from the lens side of the camera.
- i You may need a spudger or prying device to remove the metal piece by lifting the back end up.

Step 7



- ⚠ Some of these screws may have adhesive to keep the camera from being taken apart so push hard with the screwdriver and turn slowly to avoid stripping screws.
- Use a Phillips #000 screwdriver to remove all four of the 7.1mm screws that are under the metal piece.

Step 8



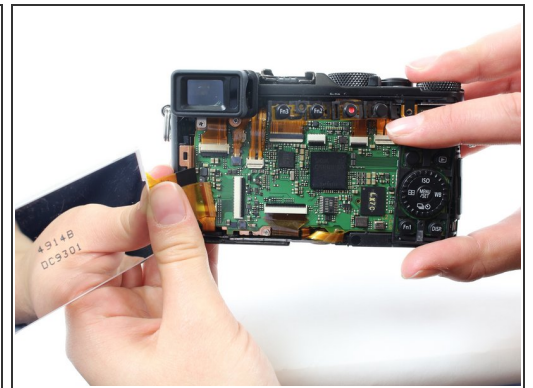
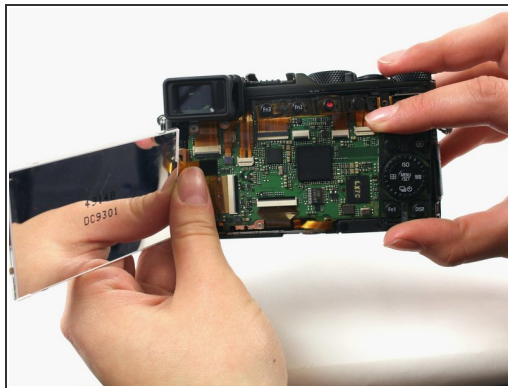
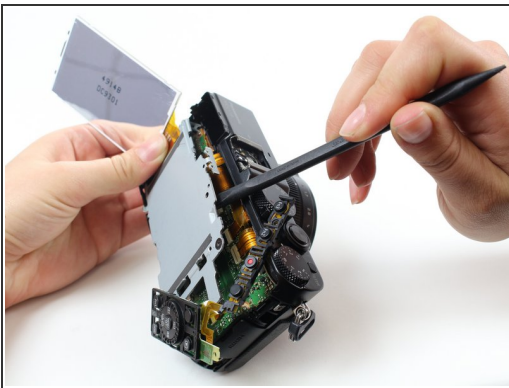
- ⚠ There may be adhesive holding the back on, so pry carefully to not break any of the ribbon cables underneath.
- Pry off the back of the camera using a spudger starting from the top right side of the LCD screen.

Step 9



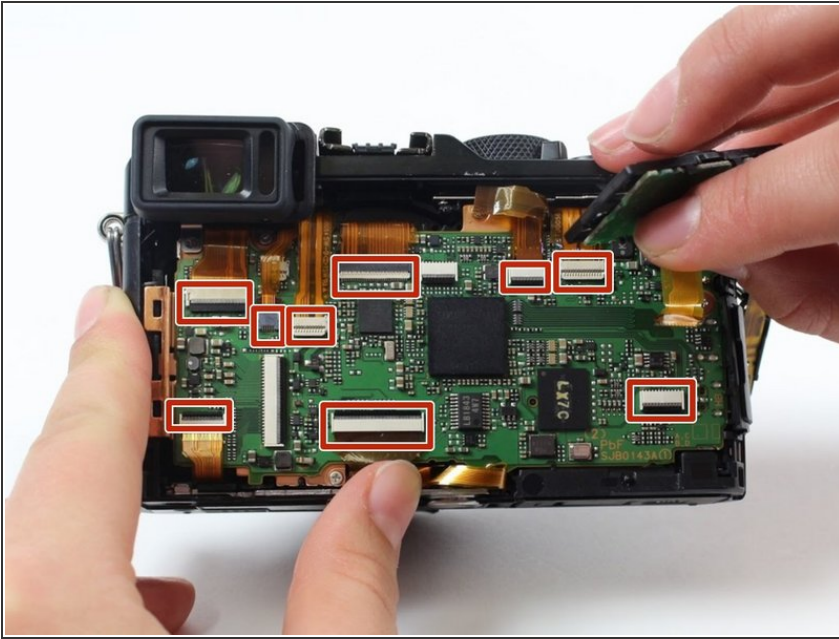
- Use a Phillips #000 screwdriver to remove the 7.5mm screw on the top right of the back of the camera that holds the metal backing in place.

Step 10



- Lift the LCD screen away from the device.
- Pry off the silver metal backing with a spudger.
- Pull out the ribbon cable that attaches the LCD screen to the motherboard.
- ⓘ If need be, use a plastic spudger to pry the ribbon cable out of its socket.
- Remove the LCD screen.

Step 11 — Motherboard



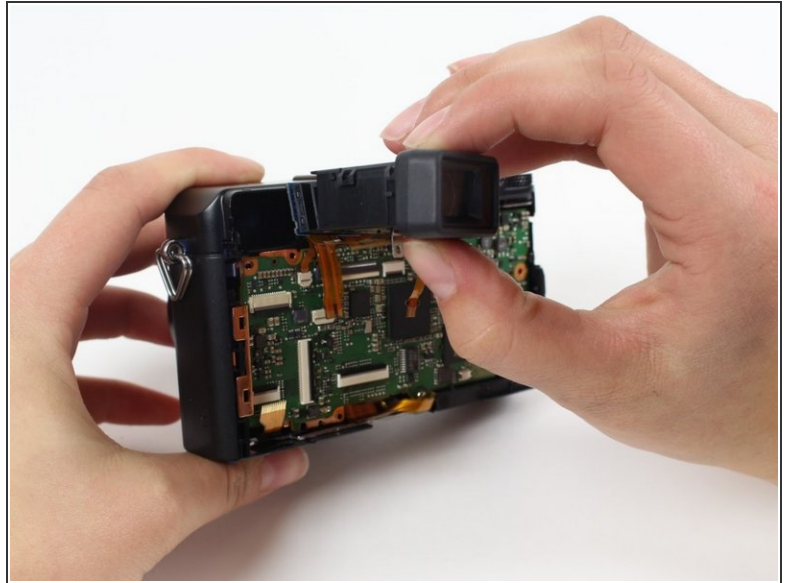
- ⚠ You may need to use tweezers and a spudger to disconnect some of the ribbon cables so they do not break.
- Disconnect the nine visible ribbon cables/ZIF connectors by flipping the black bars up and pulling the ribbon straight out of the connector.
- Disconnect two more cables in the upper left corner of the board, hidden behind the visible cables.
- ℹ Learn more about disconnecting ZIF connectors [here](#).

Step 12



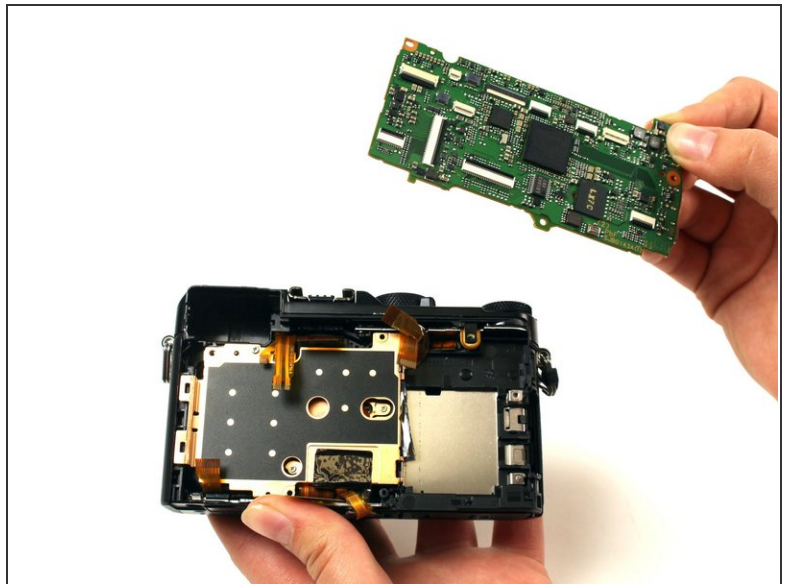
- Use a Phillips #000 screwdriver to remove the two 4.5 mm screws.
- Use a Phillips #000 screwdriver to remove the 2.5 mm screw.

Step 13



- Use two fingers to gently pull the viewfinder toward you and out of its housing.
- ⓘ The black plastic piece is still on the viewfinder in this image, but should have been removed during LCD screen removal.

Step 14



- Start at the top of the camera and use the plastic spudger to pry the motherboard out of the camera.

To reassemble your device, follow these instructions in reverse order.