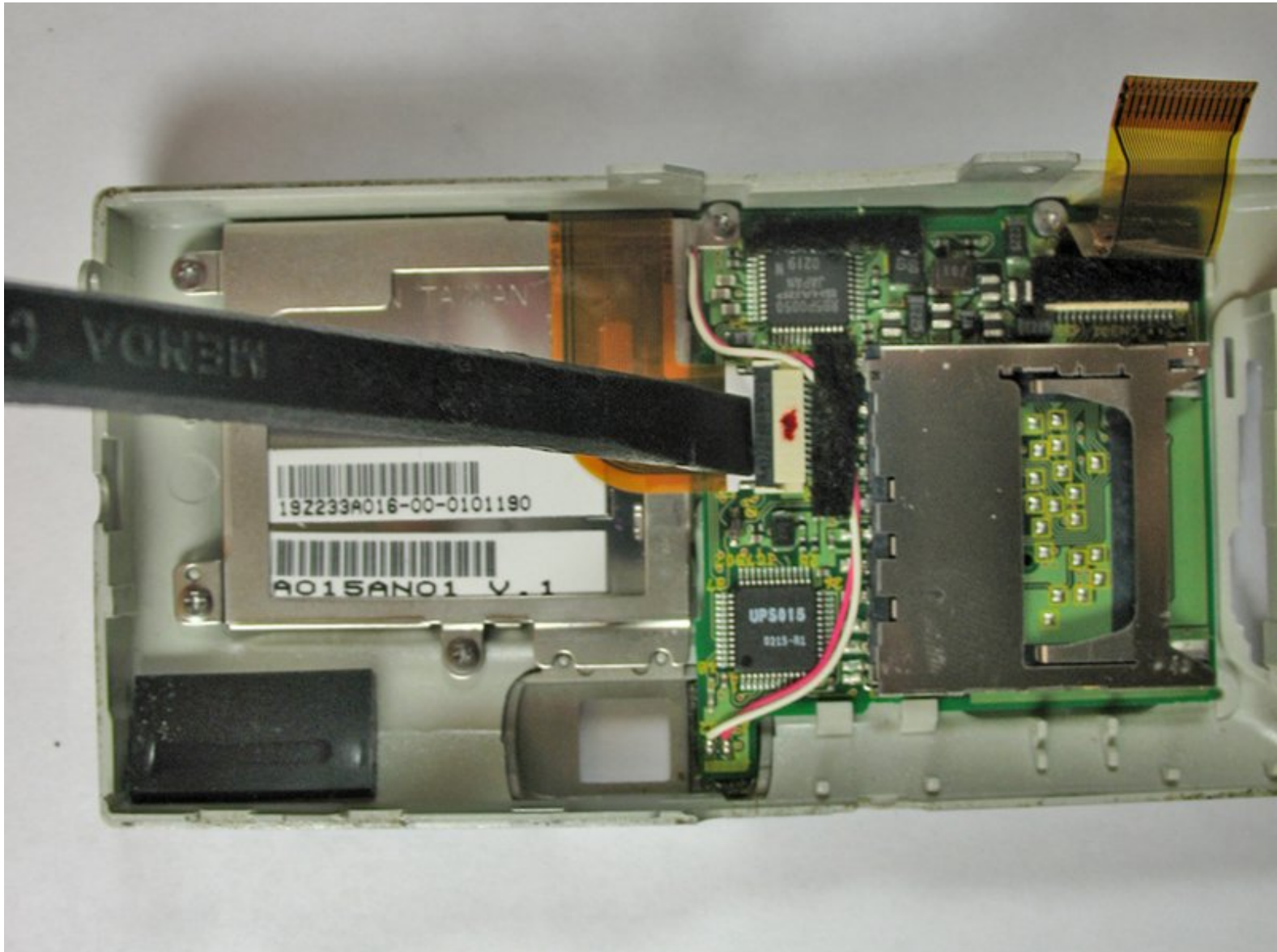




Panasonic Lumix DMC-F7 Replacing LCD Screen Replacement

Replacing the LCD screen for the Panasonic Lumix DMC-F7.

Written By: Alex Penman



INTRODUCTION

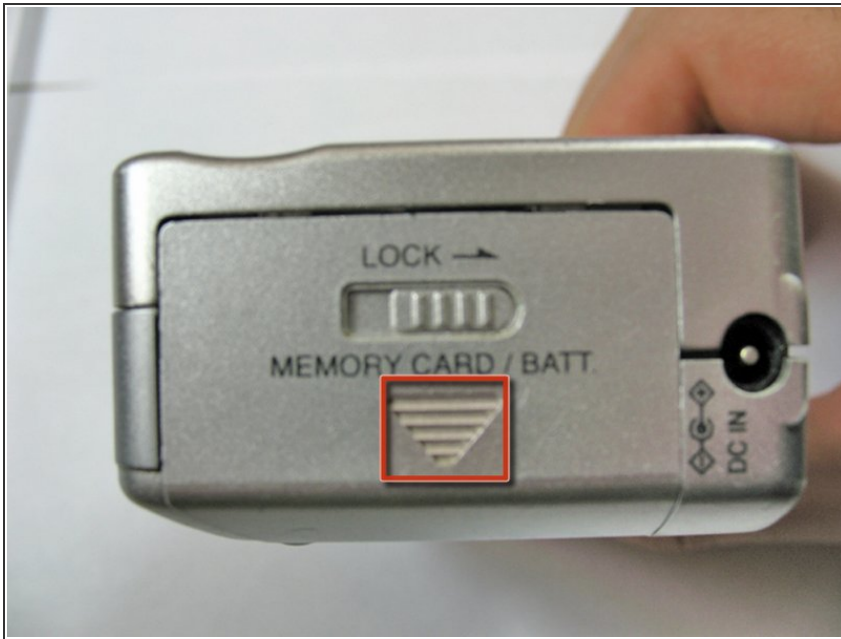
Steps for replacing the LCD screen on the back of your camera.



TOOLS:

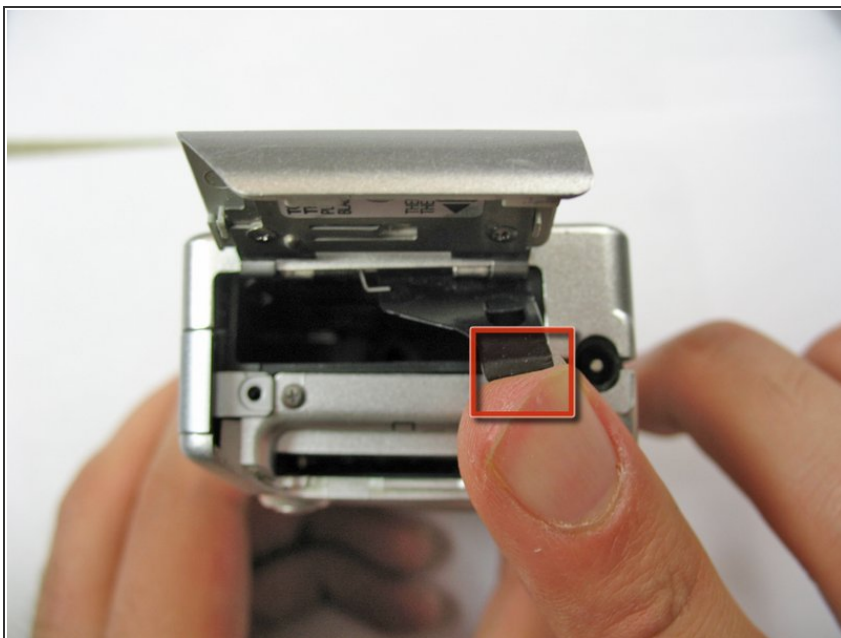
- [Phillips #00 Screwdriver](#) (1)
 - [Spudger](#) (1)
-

Step 1 — Battery



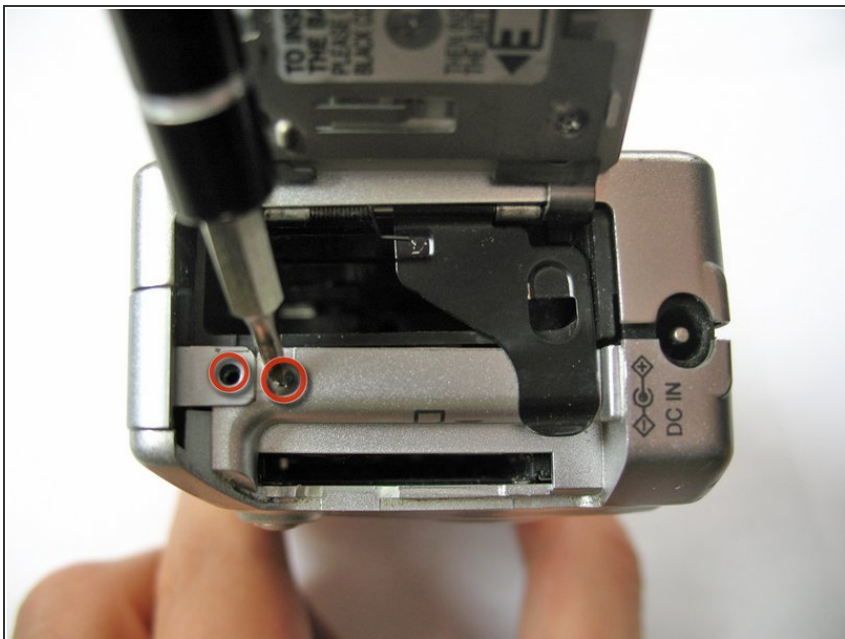
- Slide the lock into the unlocked position to the right.
- ⓘ Use your finger to slide battery hatch towards the arrow sign.
- ⓘ Both battery and memory card should now be visible.

Step 2



- Open battery hatch and the black cover to expose the battery compartment.
- ⓘ The camera used to create these repair guides did not have a battery and memory card.
- Pull the battery out and replace with a new one.
- ✦ When putting the battery back in, make sure it is in the same orientation as before.
- Close the battery compartment, and make sure the lock is in the locked position.

Step 3 — Replacing Back Case



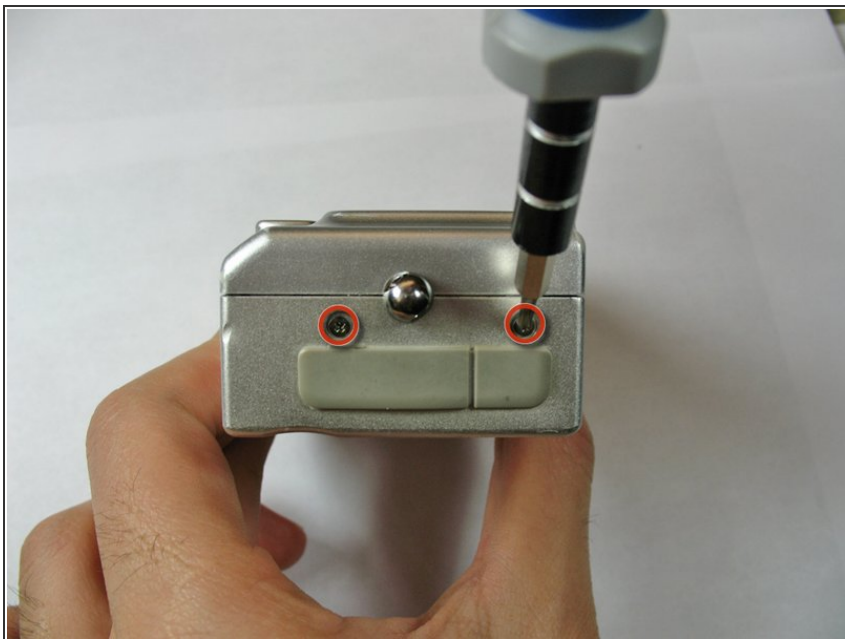
- Remove the two 2.8 mm Phillips screws as shown in picture.

Step 4



- Using a Philips Screw Driver, remove the three 2.8 mm Phillips screws on the bottom of the camera as shown in picture.

Step 5



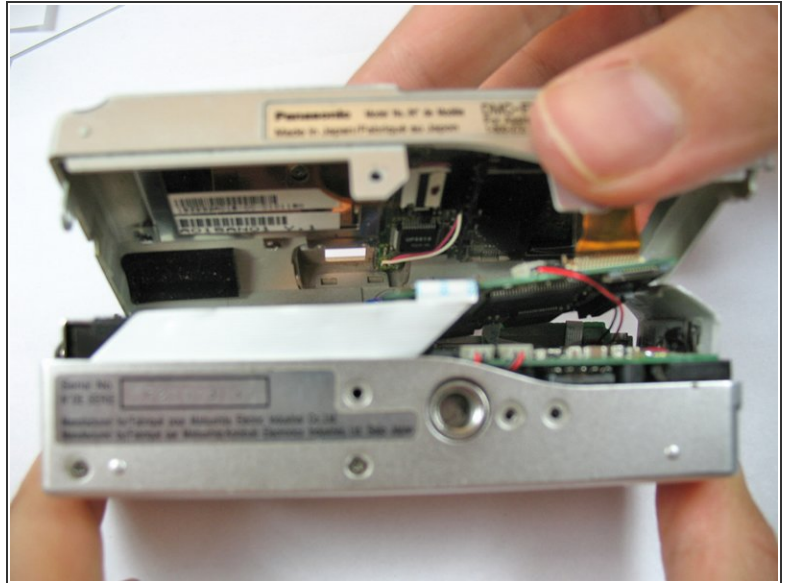
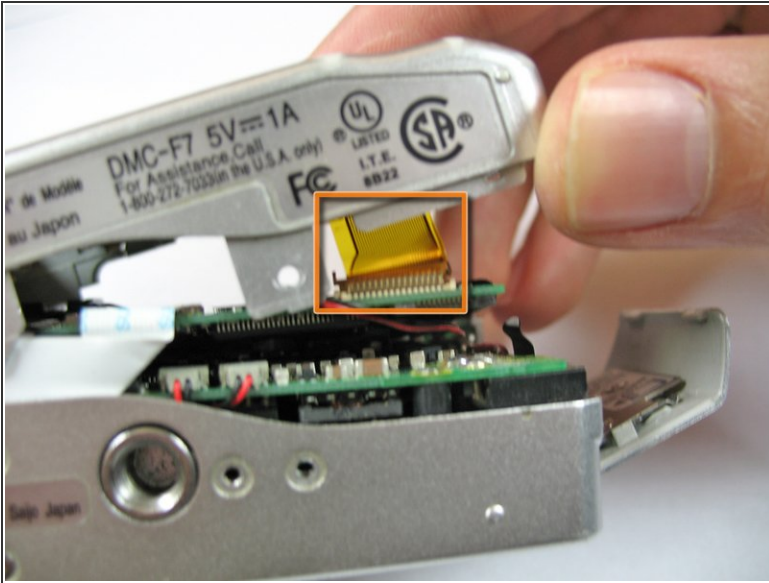
- Remove the two 2.8 mm Phillips screws on the side of the camera as shown in picture.

Step 6



- Use a spudger to pry open the case from all sides.

Step 7



⚠ Beware of the ribbon cable that is still attached when opening.

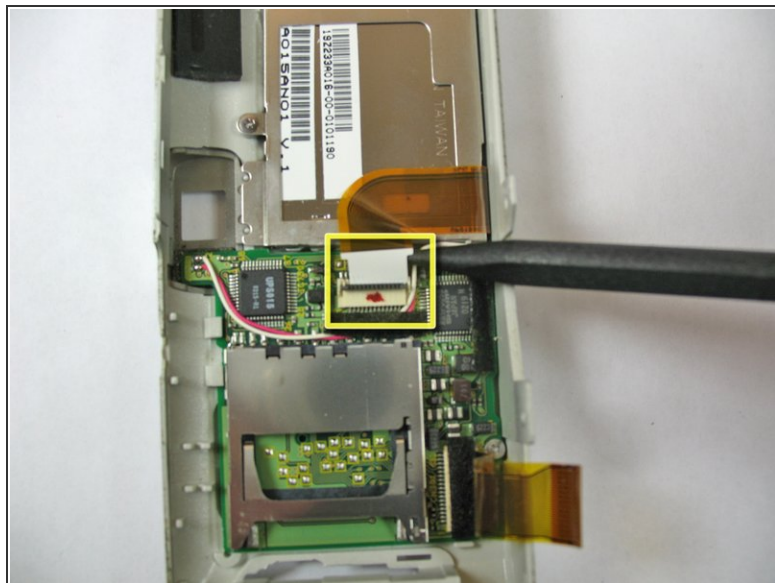
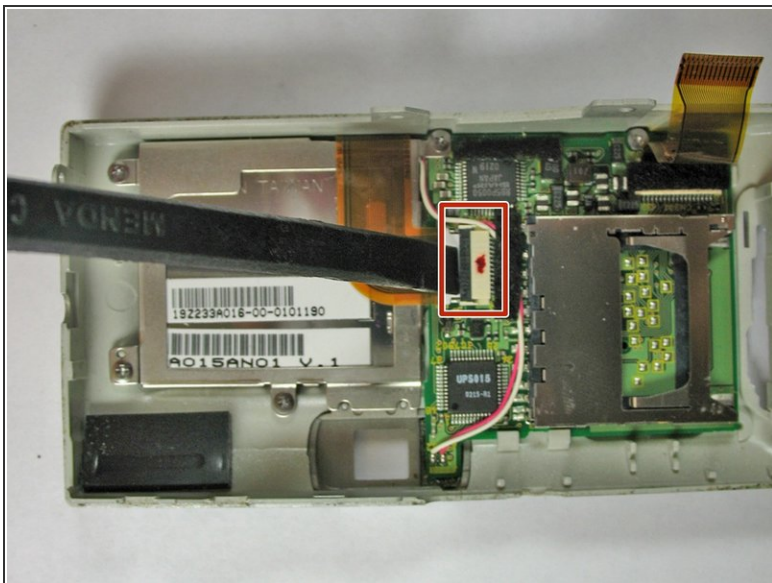
- Use your fingers to carefully pry off the back casing from the camera assembly.

Step 8



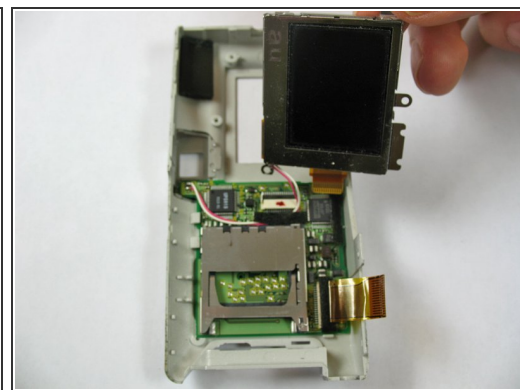
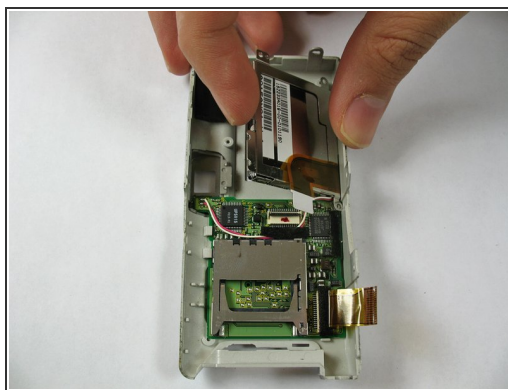
- Lay the camera on its front side. Then, use the Spudger to open the film strip locking mechanism and remove strip./**No edits necessary.**
- Hold down on the camera's metal casing with one hand. Using your other hand, completely lift the back case off the rest of the camera, making sure the film strip separates./**Make a picture for this step.**

Step 9 — Replacing LCD Screen



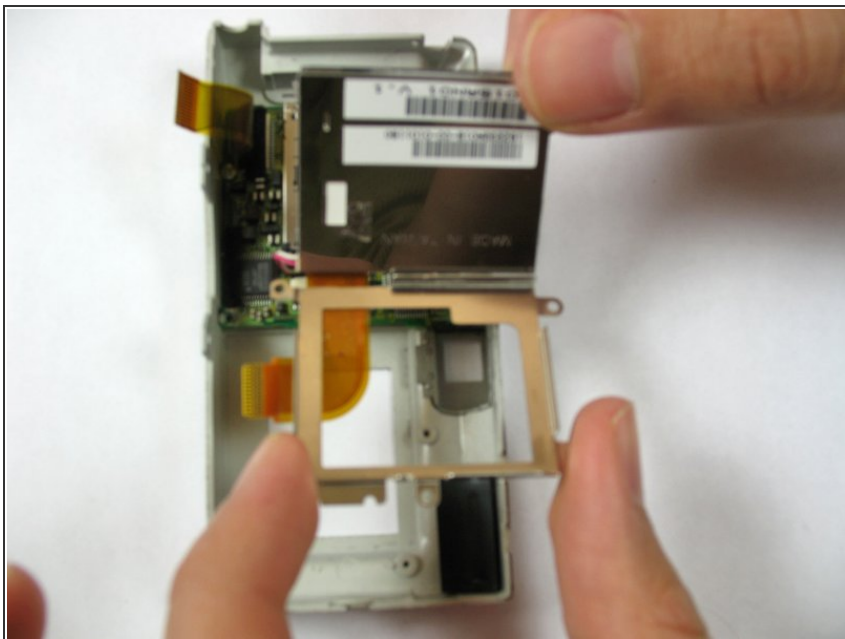
- Use a spudger to lift the screen ZIF connector tab.
- Use the back of the spudger to push the ribbon cable free.

Step 10



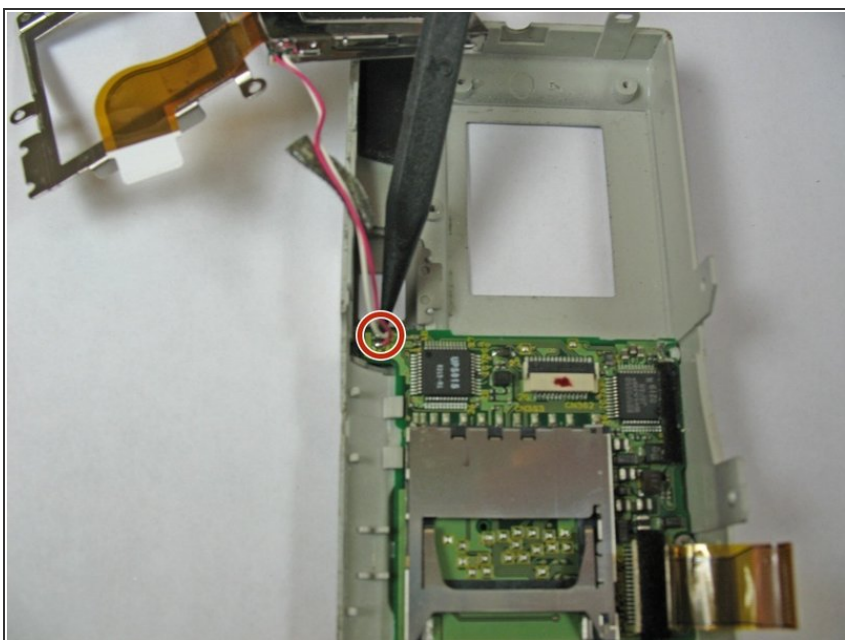
- Remove the four 2.4 mm Phillips screws as shown in picture.
 - Lift up the LCD screen from the front case.
- ⚠ Beware of the wire that is connected to the board in the other side.

Step 11



- Remove the LCD screen from its case.

Step 12



- Desolder the wire connecting the LCD to the motherboard.
- Solder wires from new LCD screen to the circuit board.

To reassemble your device, follow these instructions in reverse order.