



Panasonic Lumix DMC-FH20 Circuit Board Replacement

Replace your circuit board if your camera will not work, even after you replace the battery.

Written By: Arianna Boushell



INTRODUCTION

If your circuit board is broken, use this guide to help you replace it. You will need special tools to complete this guide. Please refer to the tools to make sure you have what you need.



TOOLS:

- [Phillips #000 Screwdriver](#) (1)
 - [iFixit Opening Tools](#) (1)
-

Step 1 — Circuit Board



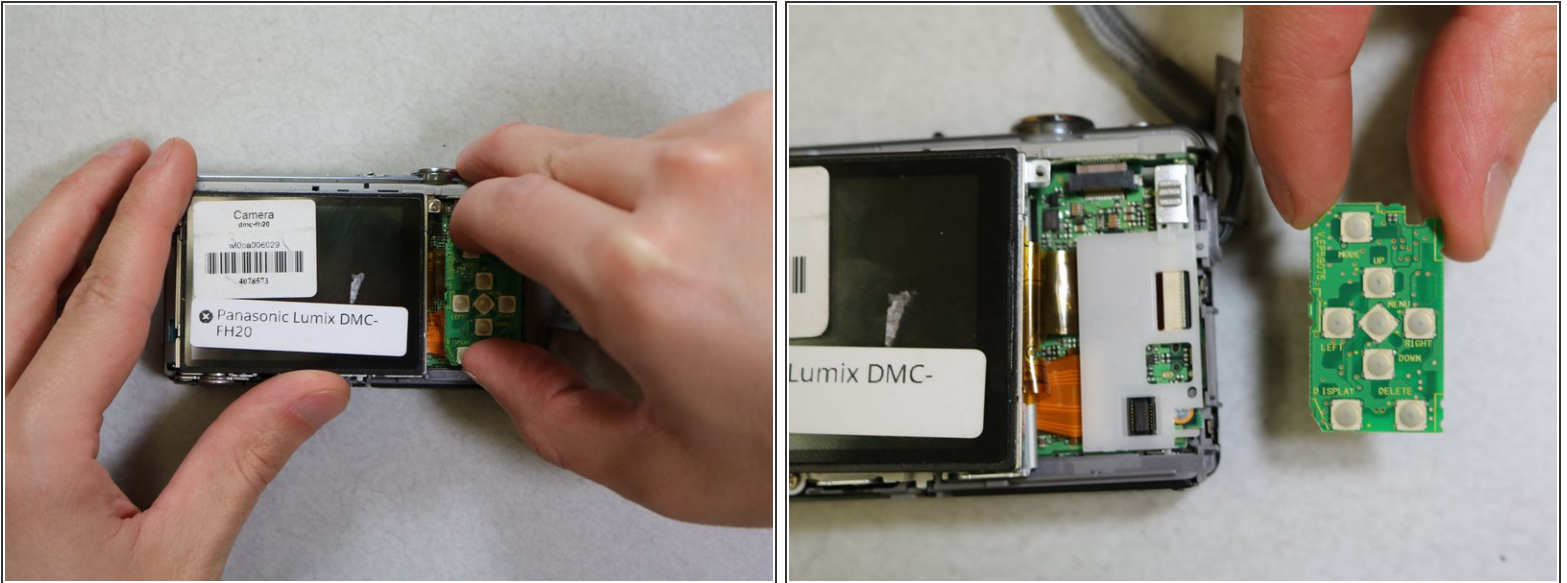
- Remove all screws (Phillips #000 head) from the sides and bottom of the camera.

Step 2



- Remove the back panel. This might require some extra force. If you still can't get the panel off, try to use a plastic opening tool.

Step 3



- Remove the circuit board. You should be able to do this with your fingers. Just grab it and pull upwards. If it does not come, use a plastic opening tool to help.

To reassemble your device, follow these instructions in reverse order.