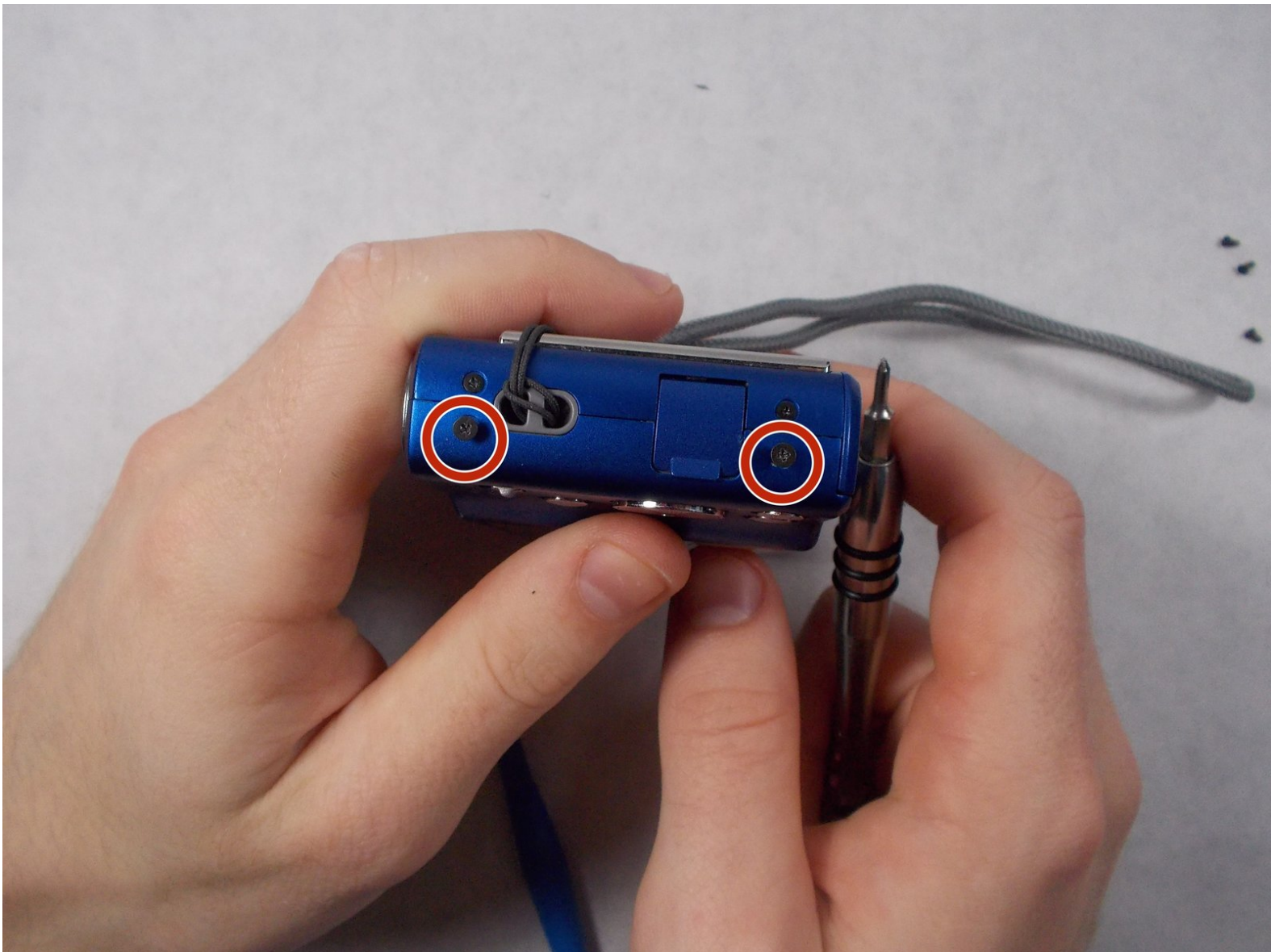




Panasonic Lumix DMC-FH25 Back Case Replacement

Remove and replace the back case of the camera. This is useful if you need to access the screen or lens assembly.

Written By: Janice Weldon



INTRODUCTION

Removing and replacing the back case is an easy process. It is useful if the case is damaged or broken, and also allows the user to look deeper inside the camera or replace parts beneath. Replacing the back case can also be done simply because the user wants a new color camera.



TOOLS:

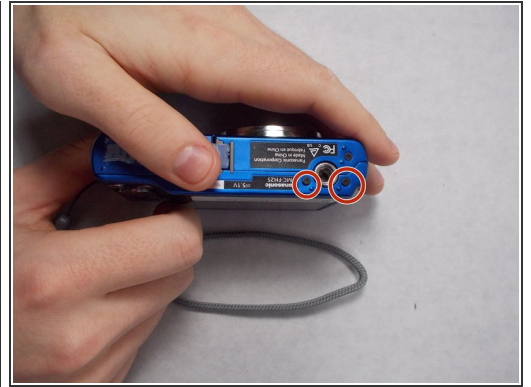
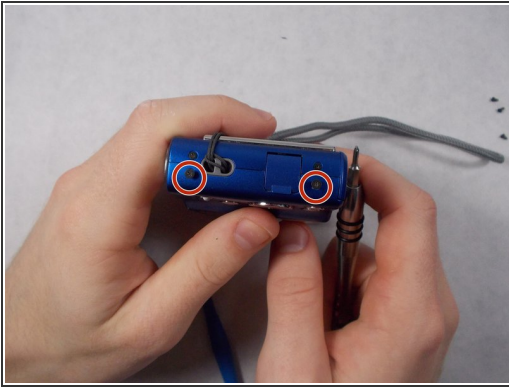
- [Phillips #00 Screwdriver](#) (1)
- [iFixit Opening Tools](#) (1)



PARTS:

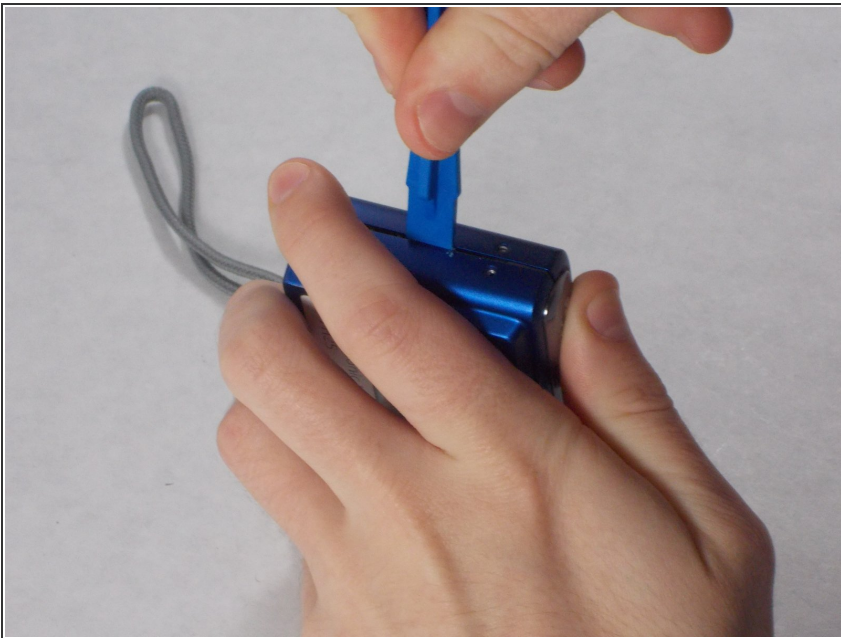
- [Phillips screws 6.35mm](#) (1)

Step 1 — Back Case



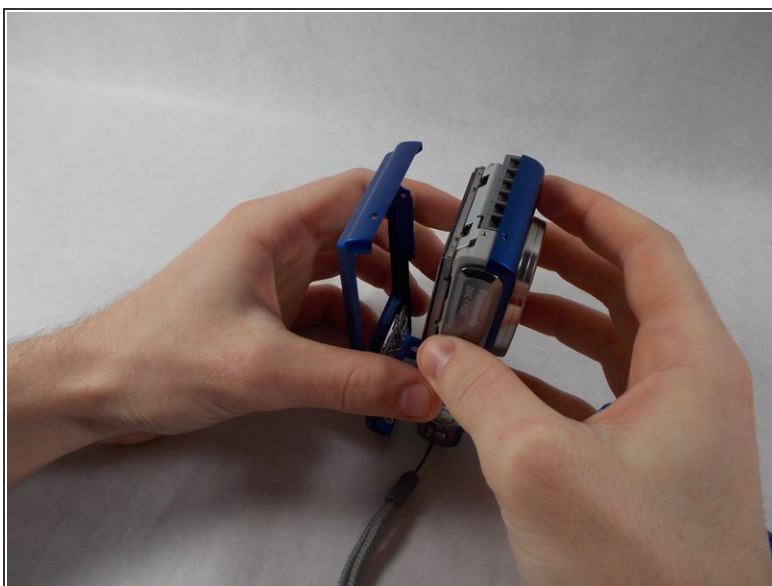
- Remove 5 screws attached to the back case using a 00 Phillips head screwdriver.

Step 2



- Using your hands and a pry tool, lever the back case off.

Step 3



- Remove the back case.

To reassemble your device, follow these instructions in reverse order.