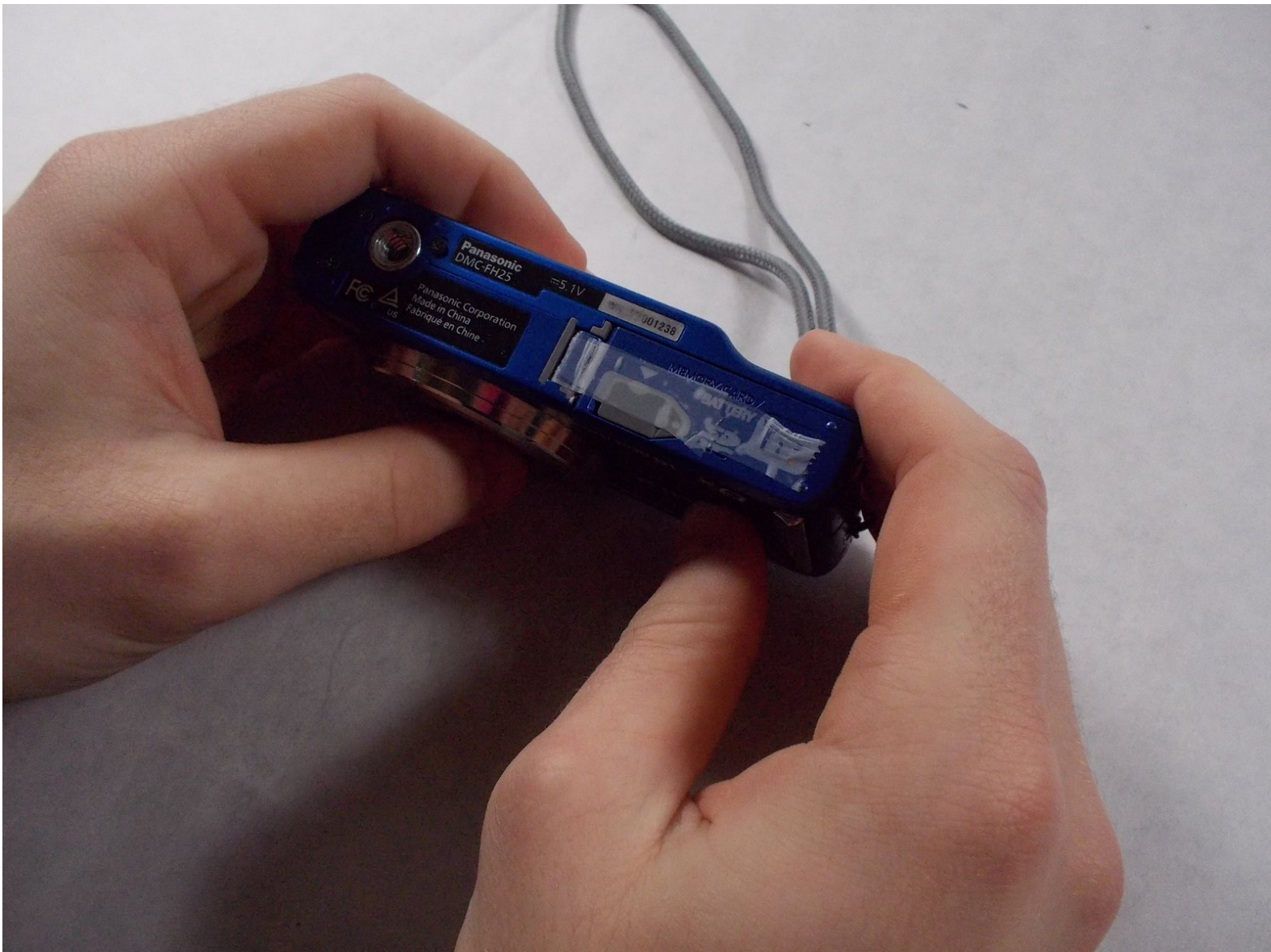




Panasonic Lumix DMC-FH25 Battery Replacement

A guide to remove and replace the battery for the camera. This can be useful as both a replacement guide and an intermediate step for other fixes.

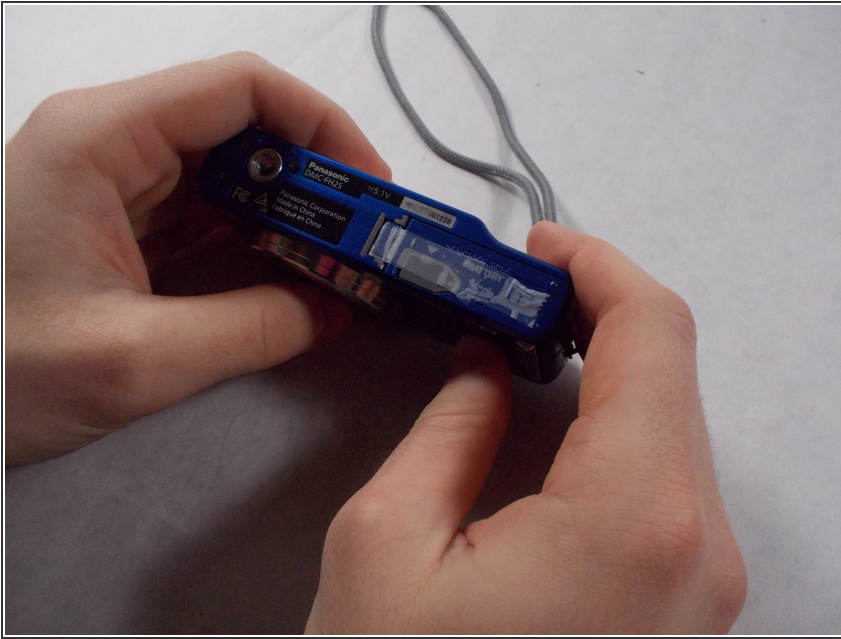
Written By: Janice Weldon



INTRODUCTION

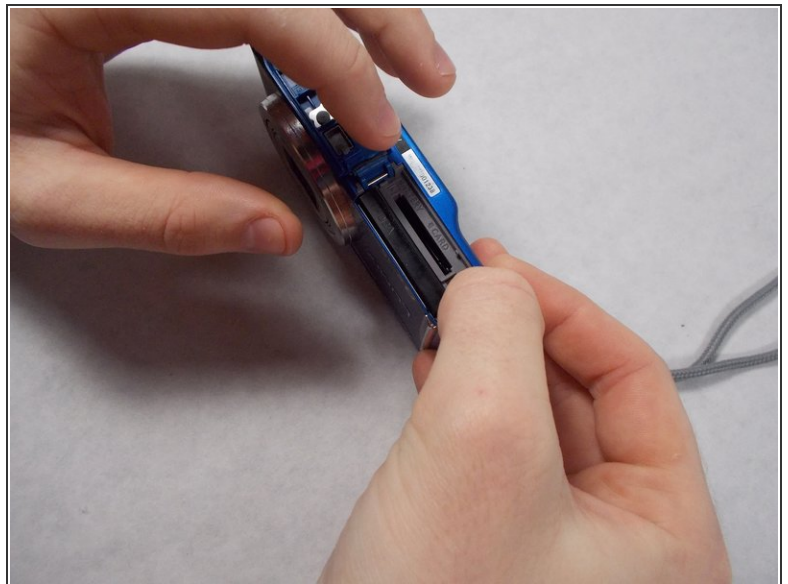
Removing the battery is essential knowledge for owning a camera. Luckily it is also an incredibly straightforward process that doesn't involve any tools. It is useful if the battery needs to be charged or replaced. Additionally, battery issues can be the cause of many camera errors, so knowing how to take the battery out and look for faults is useful.

Step 1 — Battery



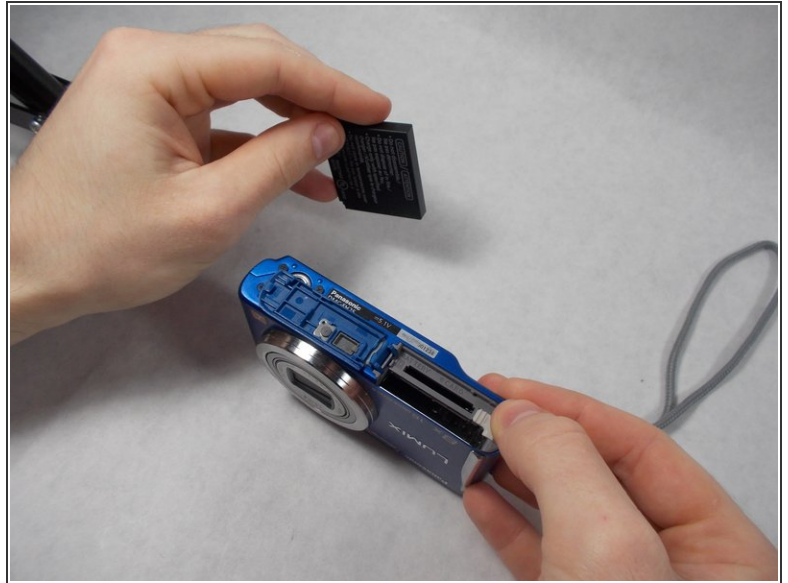
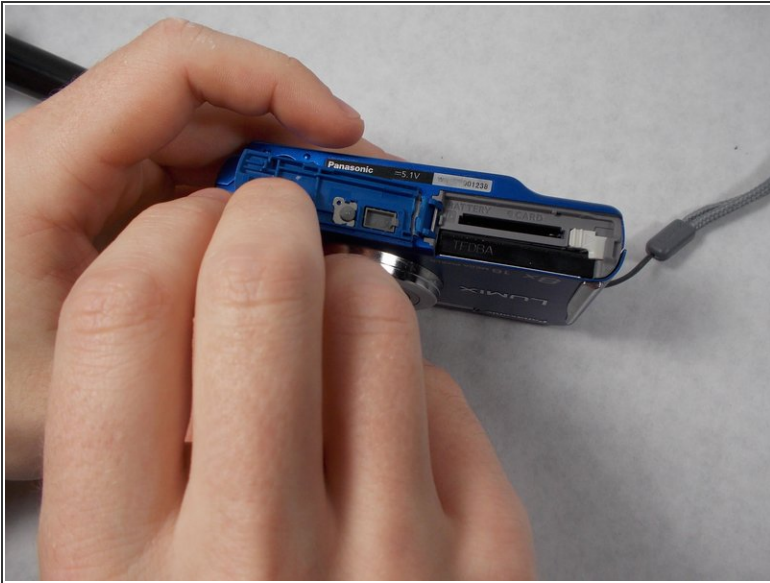
- Hold the camera such that the shutter button is facing downward. Locate the battery and SD card door. It will be distinguished with lettering that reads 'SD Card/Battery'.

Step 2



- Push the grey tab on the lens side of the door to open it and locate the battery.

Step 3



- Remove the battery. Push the grey tab on the corner of the battery towards the edge of the camera. This will release the battery.

To reassemble your device, follow these instructions in reverse order.