



Panasonic Lumix DMC-FX01 Flash Top Assembly Replacement

This guide is used to replace the Flash Top Assembly in the camera.

Written By: Caleb Fink



INTRODUCTION

This guide will show the user how to disassemble the camera to reach the Flash Top Assembly. Once the Flash Top Assembly is reached, the user can replace it.



TOOLS:

- [Phillips #00 Screwdriver](#) (1)
-

Step 1 — Battery



- Locate the memory card and battery card latch on the bottom of the camera.
- Slide the latch to the open position.

Step 2



- Open the battery latch, and slide the battery release lever to the right.

Step 3



- Remove the battery from the camera.

Step 4 — Rear Casing



- Using a size #00 Phillips screwdriver, remove the three 4.58 mm screws on the bottom of the camera.
- Use this screwdriver for all screws in the device.

Step 5



- Remove the 3.15 mm screw on the left side of the camera.

Step 6



- Remove the left side casing.

Step 7



- Remove the two 3.15 mm screws on the right side of the camera.

Step 8



- Remove the bottom right panel.

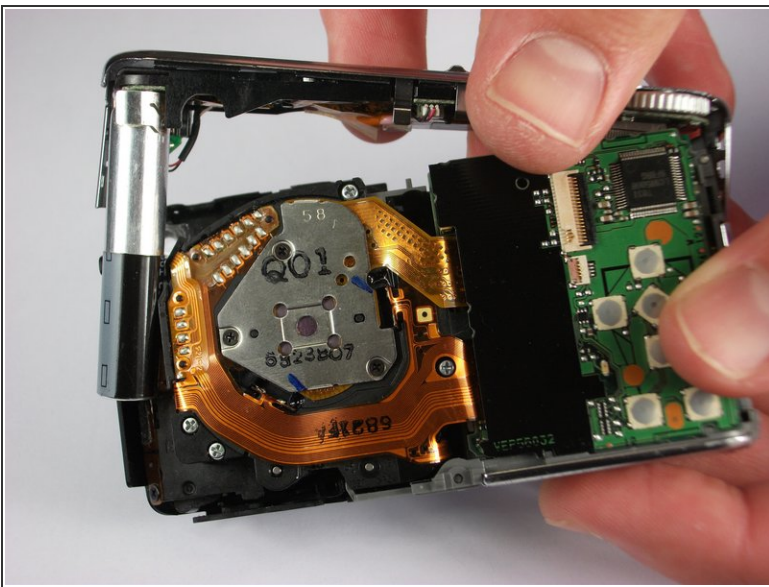
Step 9



- Gently remove the back casing.

⚠ Start at the bottom and carefully pry towards the top to get this piece free.

Step 10 — Flash Top Assembly



- Carefully pry the Flash Top Assembly away from the top.

Step 11



- Replace the Flash Top Assembly with a new one.

To reassemble your device, follow these instructions in reverse order.