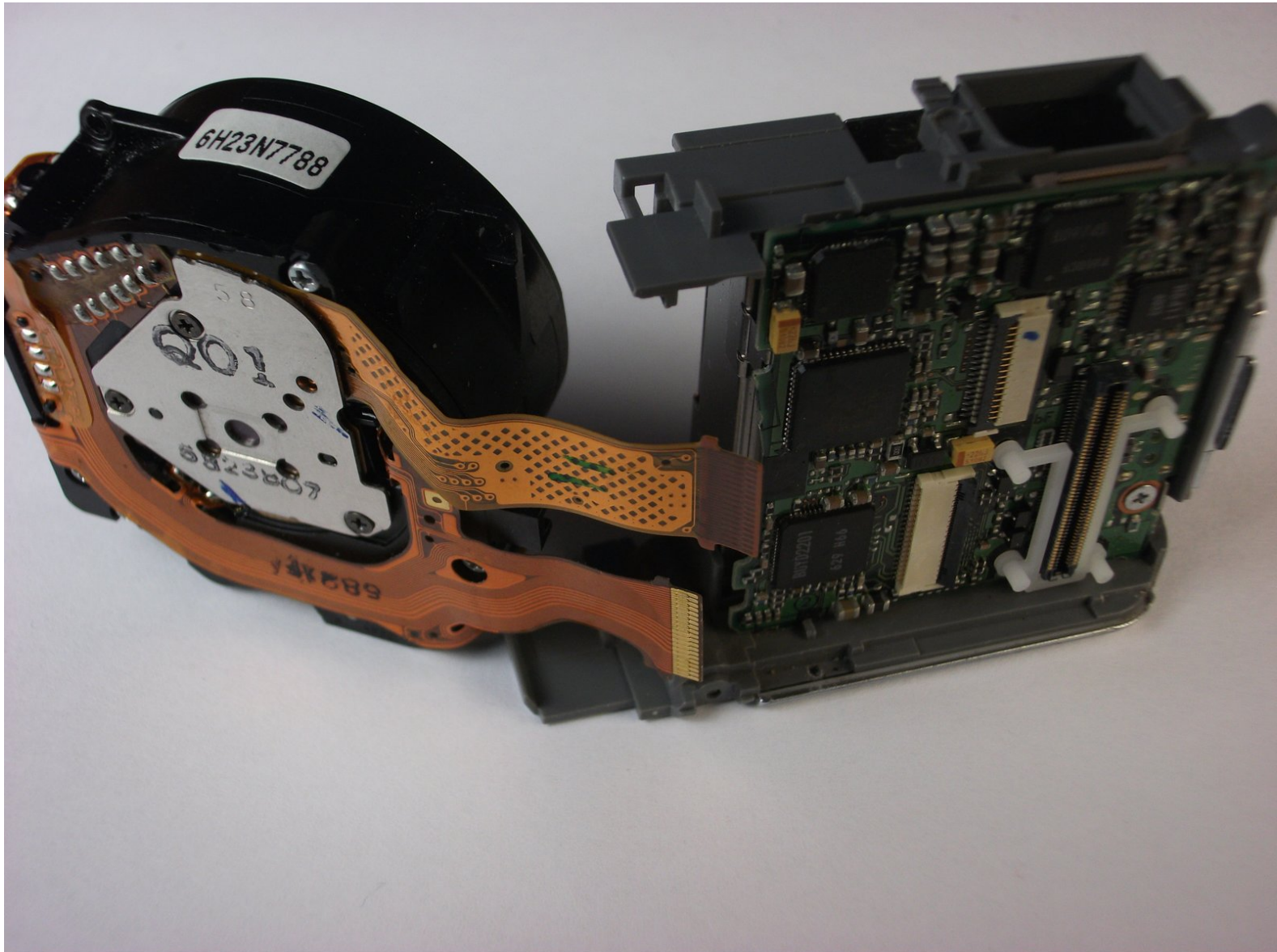




# Panasonic Lumix DMC-FX01 Lens Assembly Replacement

The guides shows the steps to remove and replace the camera lens

Written By: Steven



---

## INTRODUCTION

This guide will be useful for anyone who wants to replace a broken or damaged lens assembly.

---



### TOOLS:

- [Phillips #00 Screwdriver](#) (1)
-

## Step 1 — Battery



- Locate the memory card and battery card latch on the bottom of the camera.
- Slide the latch to the open position.

## Step 2



- Open the battery latch, and slide the battery release lever to the right.



### Step 3



- Remove the battery from the camera.

### Step 4 — Rear Casing



- Using a size #00 Phillips screwdriver, remove the three 4.58 mm screws on the bottom of the camera.
- Use this screwdriver for all screws in the device.

## Step 5



- Remove the 3.15 mm screw on the left side of the camera.

## Step 6



- Remove the left side casing.

## Step 7



- Remove the two 3.15 mm screws on the right side of the camera.

## Step 8



- Remove the bottom right panel.



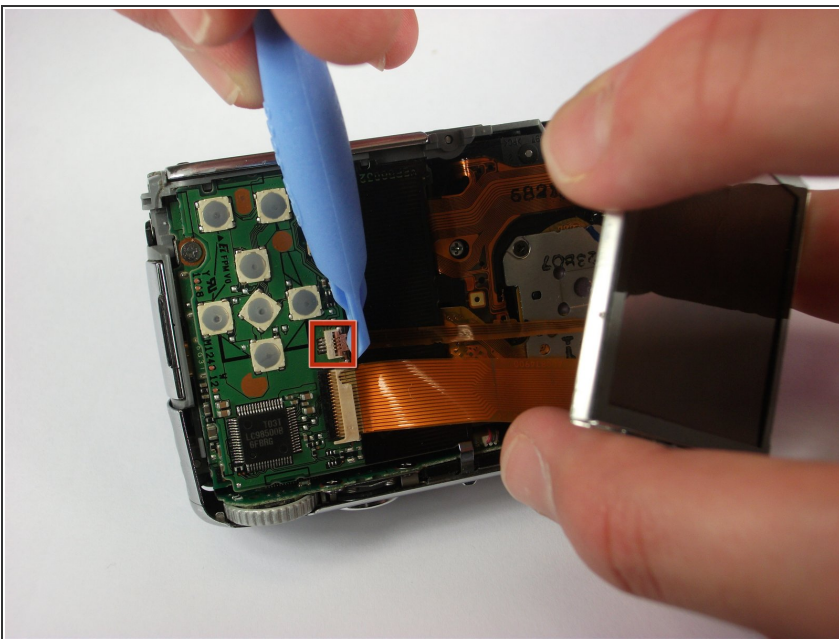
## Step 9



- Gently remove the back casing.

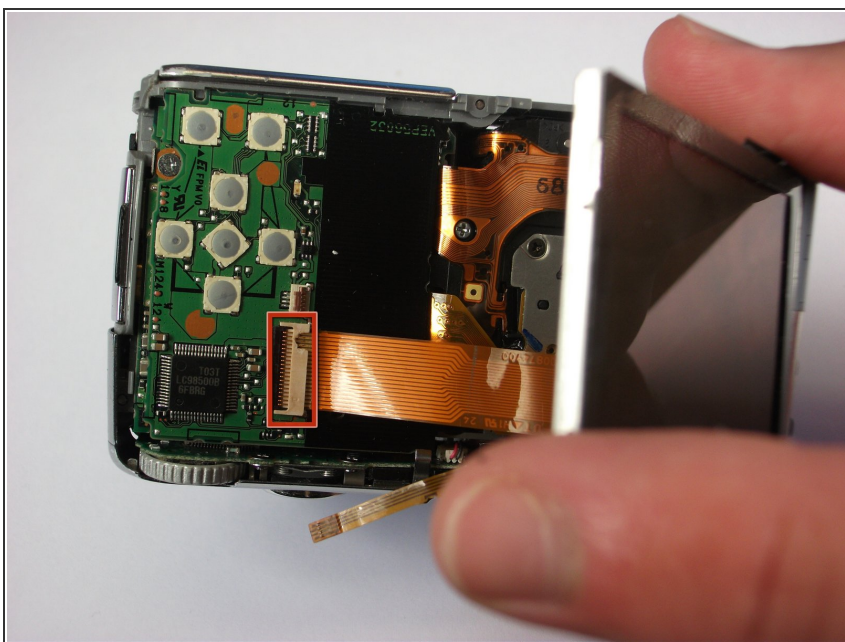
⚠ Start at the bottom and carefully pry towards the top to get this piece free.

## Step 10 — LCD Screen



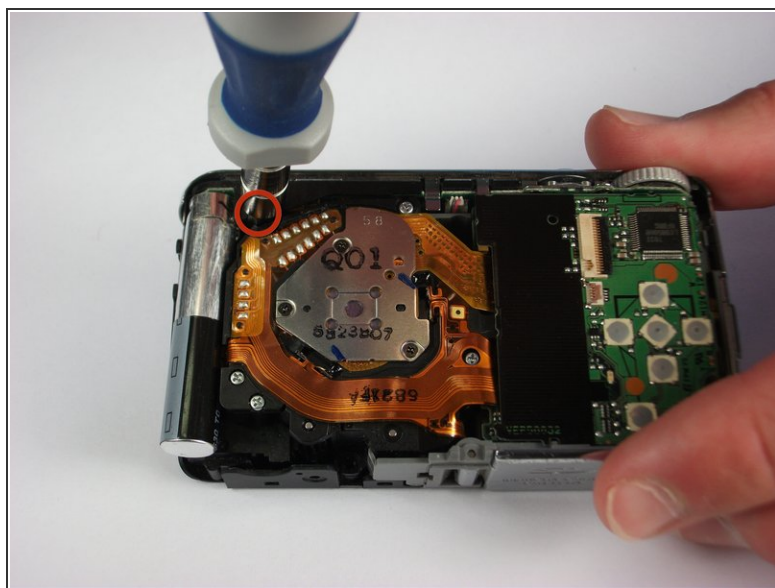
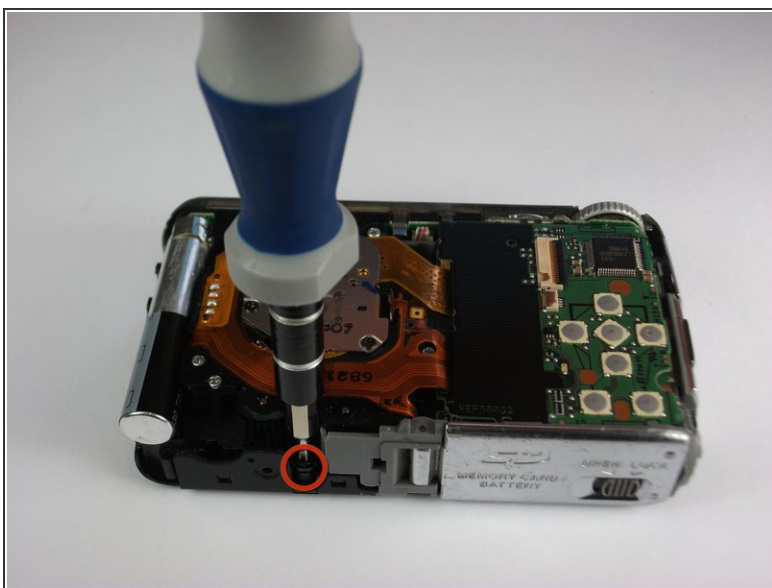
- Gently lift up the LCD screen.
- Using a plastic prying tool, flip up the latch that holds the thin ribbon in place.
- It should fall out on its own or with a gentle tug.

## Step 11



- Gently tug the thicker ribbon to remove it from its housing.

## Step 12 — Front Casing

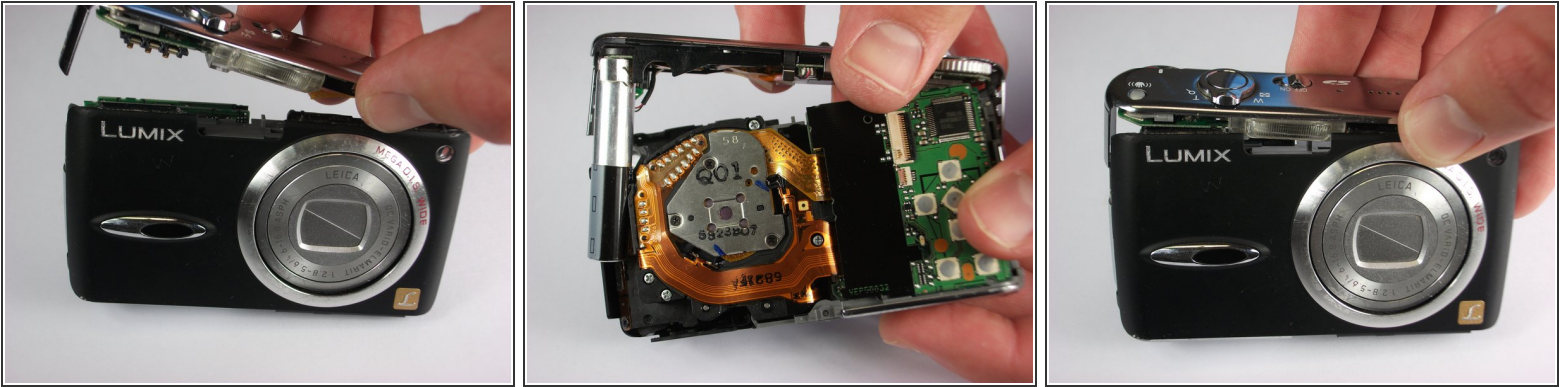


- Remove the two black 5.35 mm screws that hold in the front faceplate.

**i** There may be a third screw the the right of the lens assembly.



## Step 13



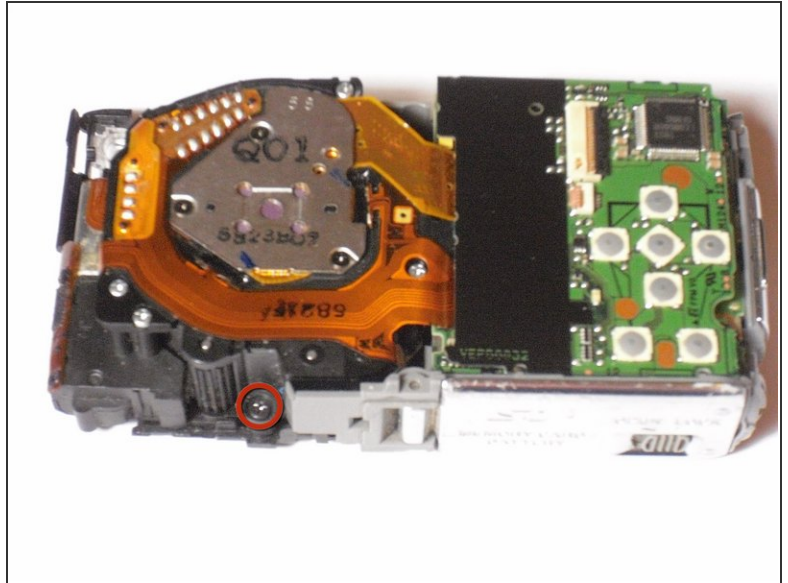
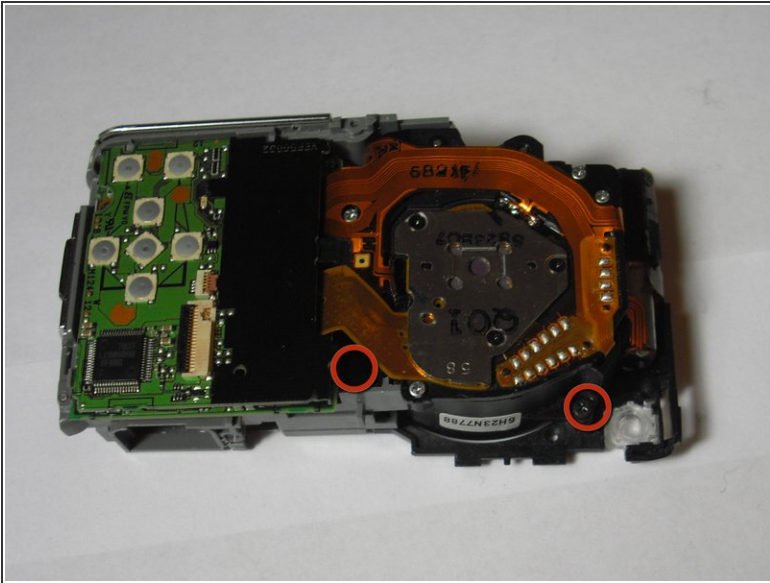
⚠ Carefully remove the upper assembly, which houses the buttons and the flash battery.

## Step 14



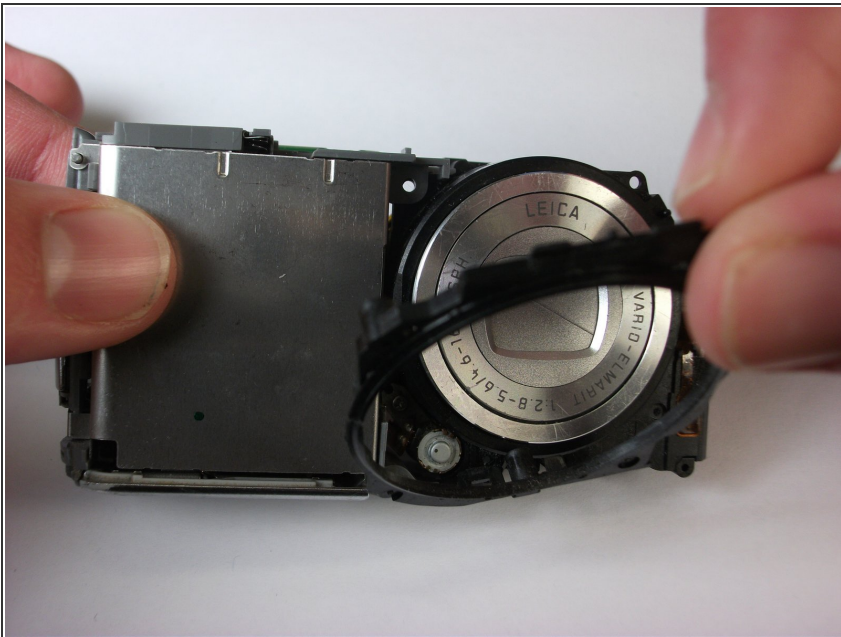
⚠ Carefully remove the front casing after verifying that the thin plastic around the lens is not still attached.

## Step 15 — Lens Assembly



- Remove the three black 5mm screws attached to the lens frame.

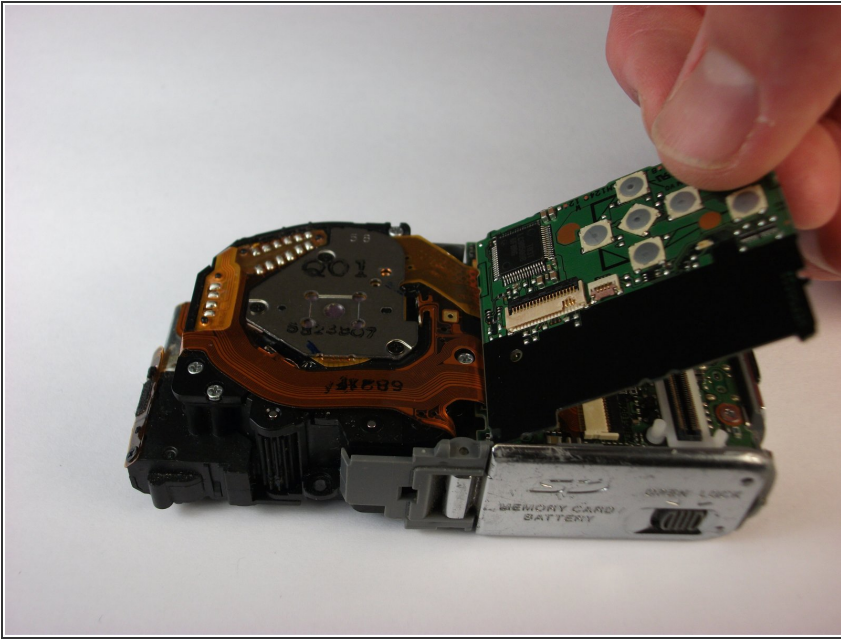
## Step 16



- Remove the lens frame.

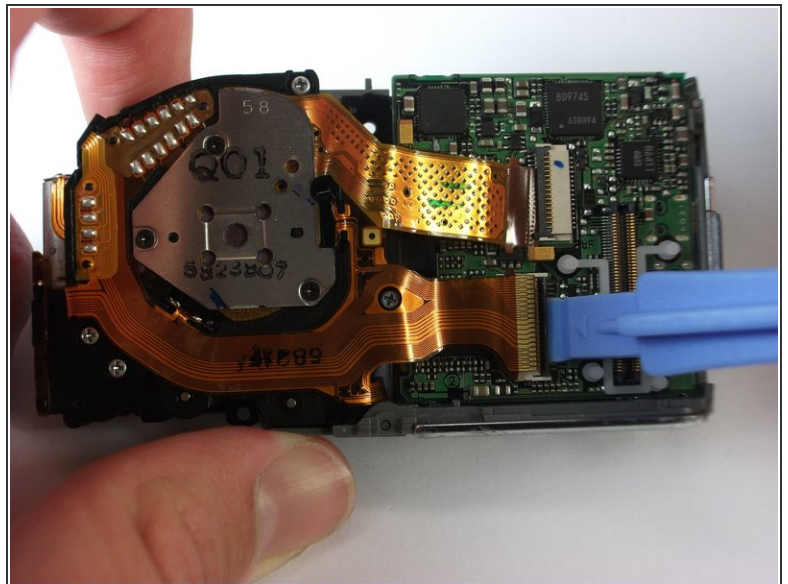
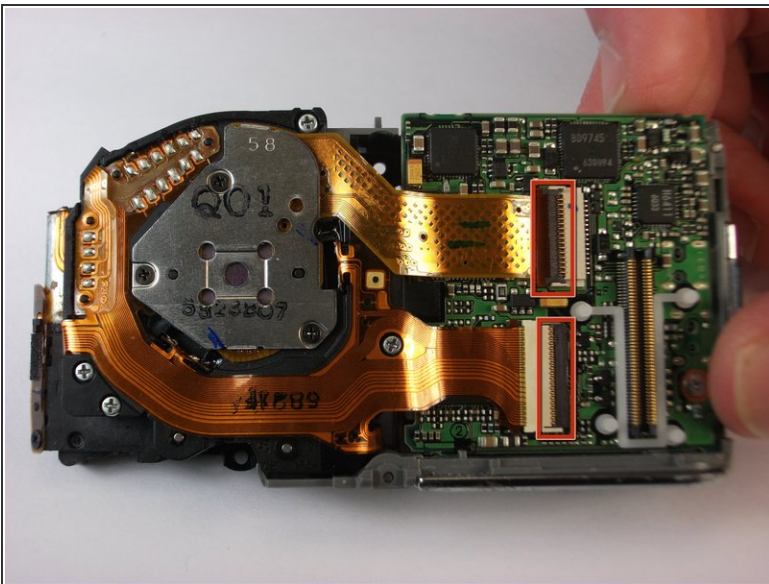


## Step 17



- Lift out the circuit board as shown.

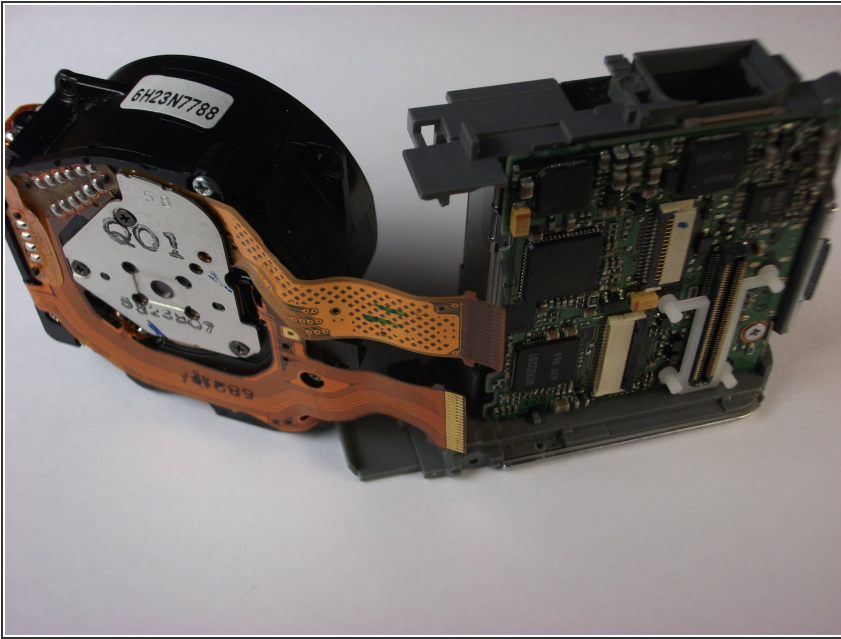
## Step 18



- Lift the two black latches that hold the connector ribbons in place.
- Disconnect the two ribbons.



## Step 19



- Remove the lens assembly as shown.

To reassemble your device, follow these instructions in reverse order.