



Panasonic Lumix DMC-FX01 Rear Casing Replacement

If the rear casing of your camera is cracked like ours, this guide will help you replace it.

Written By: Andrew



INTRODUCTION

Directions are given as if you were holding the camera to take a picture.



TOOLS:

- [Phillips #00 Screwdriver](#) (1)
-

Step 1 — Battery



- Locate the memory card and battery card latch on the bottom of the camera.
- Slide the latch to the open position.

Step 2



- Open the battery latch, and slide the battery release lever to the right.

Step 3



- Remove the battery from the camera.

Step 4 — Rear Casing



- Using a size #00 Phillips screwdriver, remove the three 4.58 mm screws on the bottom of the camera.
- Use this screwdriver for all screws in the device.

Step 5



- Remove the 3.15 mm screw on the left side of the camera.

Step 6



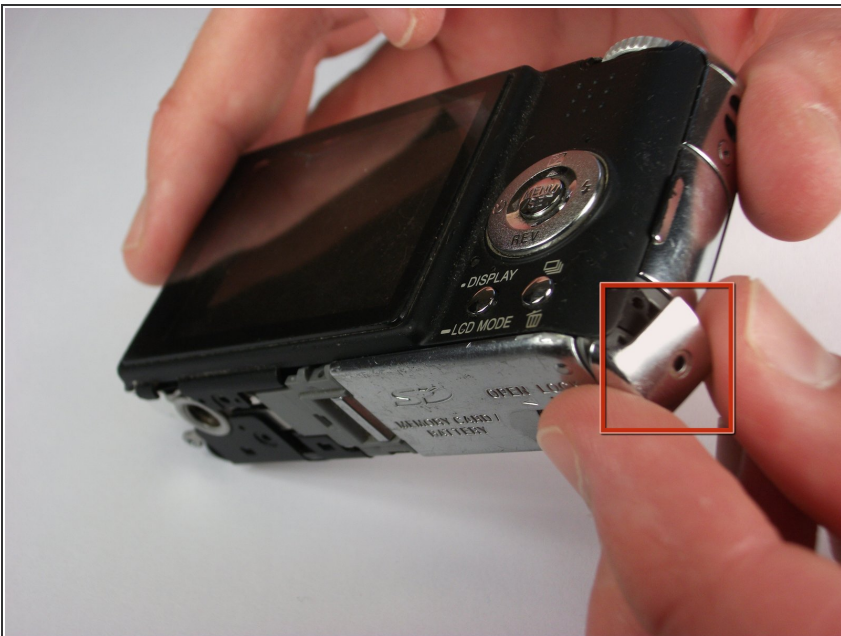
- Remove the left side casing.

Step 7



- Remove the two 3.15 mm screws on the right side of the camera.

Step 8



- Remove the bottom right panel.

Step 9



- Gently remove the back casing.

⚠ Start at the bottom and carefully pry towards the top to get this piece free.

To reassemble your device, follow these instructions in reverse order.