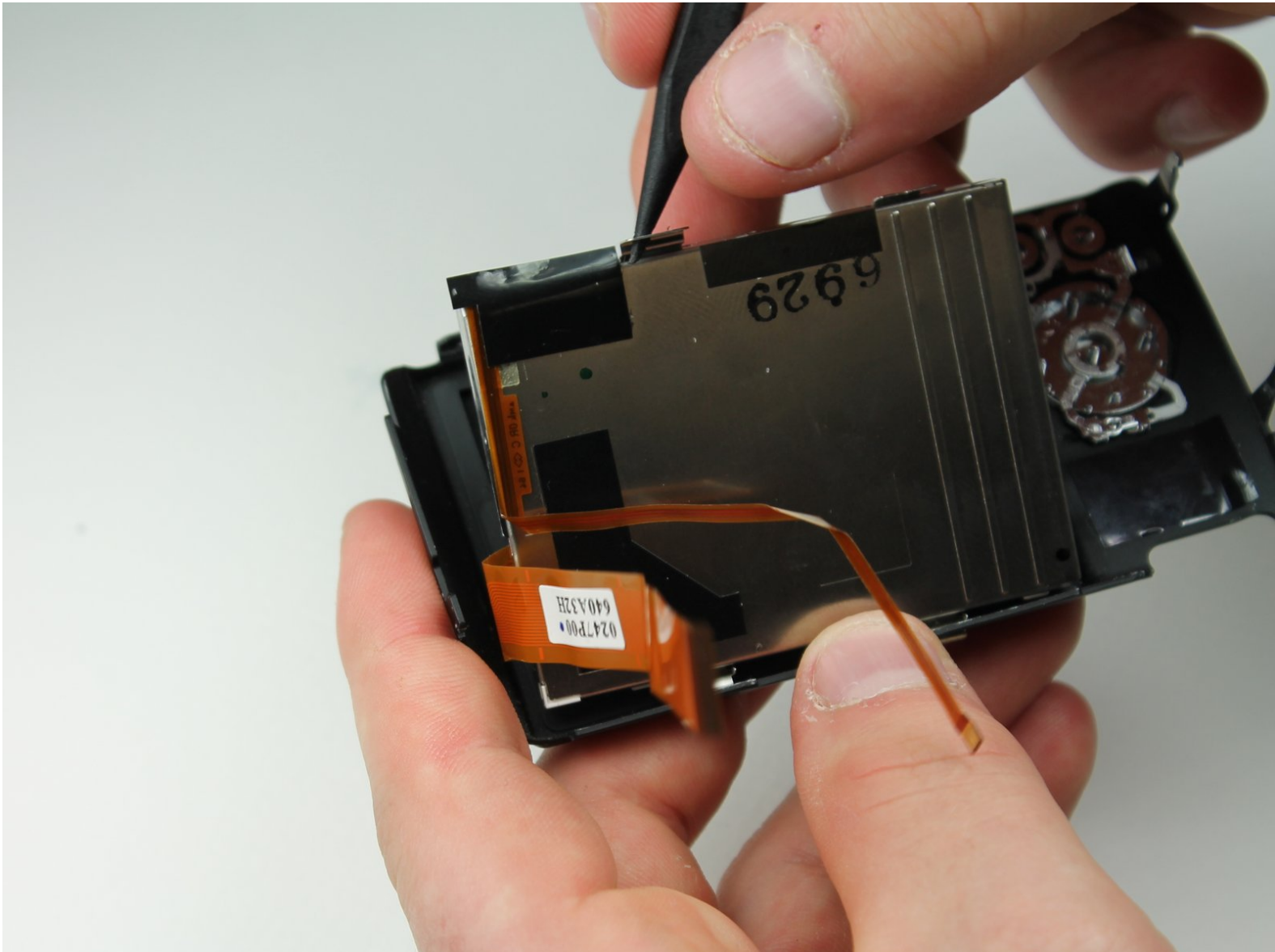




# Panasonic Lumix DMC-FX07 LCD Display Replacement

This guide will show you how to install an LCD display into your camera.

Written By: James Cruz



## INTRODUCTION

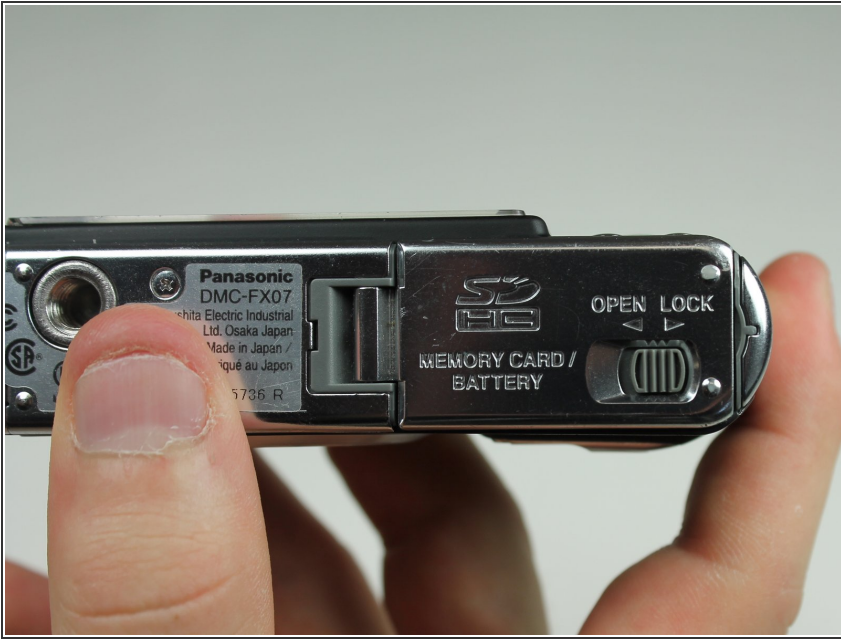
The LCD screen is one of the most vital components of the camera. It conveniently shows you the pictures you have taken with your camera and displays the options and settings for your camera.



### TOOLS:

- [Phillips #00 Screwdriver](#) (1)
  - [Spudger](#) (1)
-

## Step 1 — Battery



- Move the switch on the battery door to the Open position.
- ⓘ The door will automatically swing open after you let it go.

## Step 2



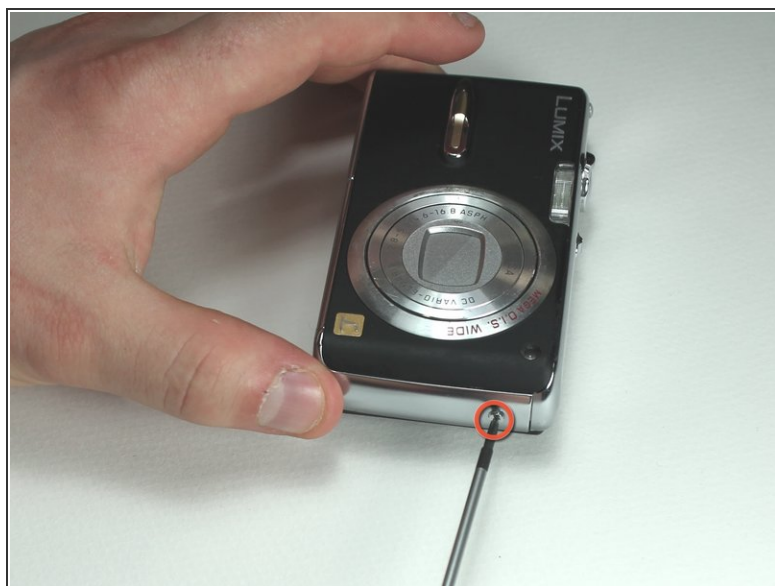
- Push the small gray tab on the top right corner to the left. The battery will pop out slightly.
- Keep your finger clear of the battery when it pops out.

### Step 3 — Memory Card



- Push the memory card in and let go.
- ❗ The memory card will pop out slightly.
- Pull out the memory card.

### Step 4 — Back Cover



- Unscrew the small screws on the sides of the camera.
- ❗ The screws on the left side(#00P, 4.7mm) are longer than the screw on the right side(#00P, 3.3mm).



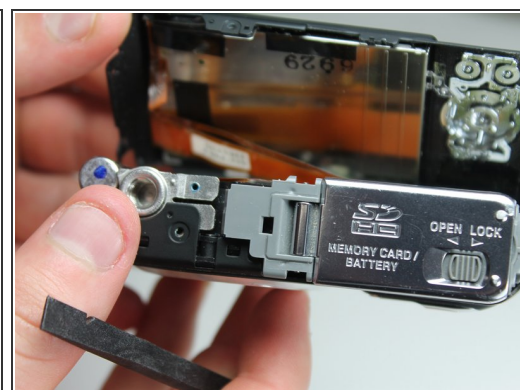
## Step 5



- Unscrew the three small screws on the bottom(#00P, 3.3mm).

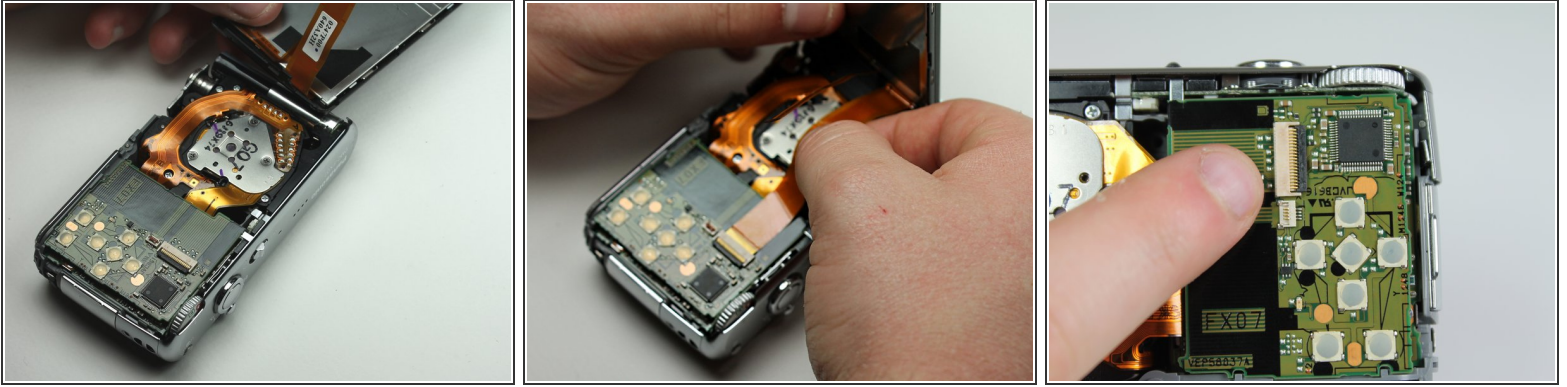
**i** The bottom will fall off.

## Step 6



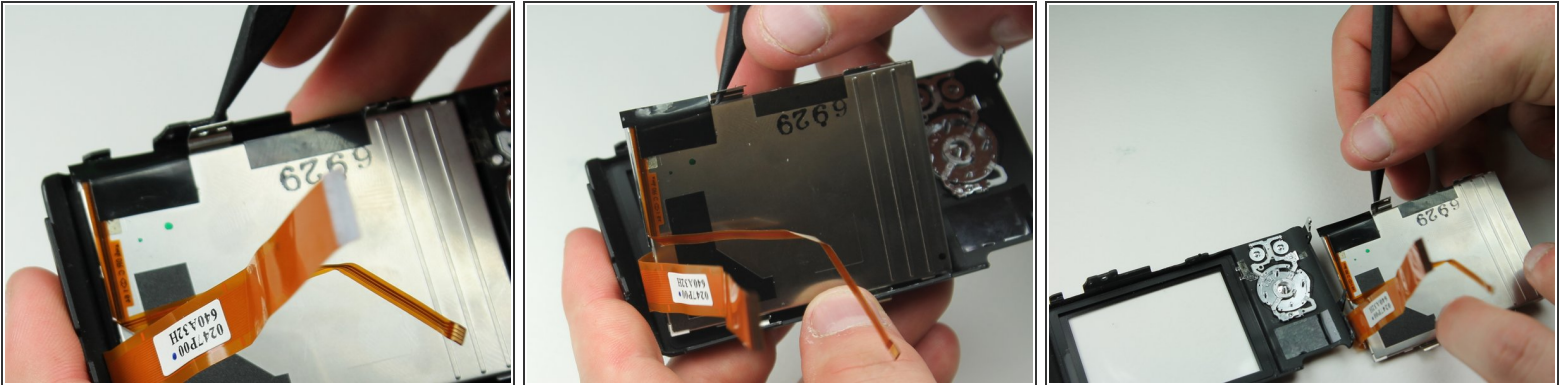
- Lift up the bottom back cover by prying the bottom edge with the spudger.
- Gently lift up the back cover with your hand from the bottom to the top.

## Step 7



- Lift the tabs on the ZIF connectors.
- The ribbon cables should easily come out of the ZIF connectors.

## Step 8 — LCD Display



- Use the pointed end of the spudger to pry off the LCD screen from the back cover. Place the tip of the spudger in the small hole in the bracket on the LCD screen and lift it out.

To reassemble your device, follow these instructions in reverse order.