



Panasonic Lumix DMC-FX07 Top Cover Replacement

Bring the top of your camera back to its beautiful self.

Written By: Karissa



INTRODUCTION

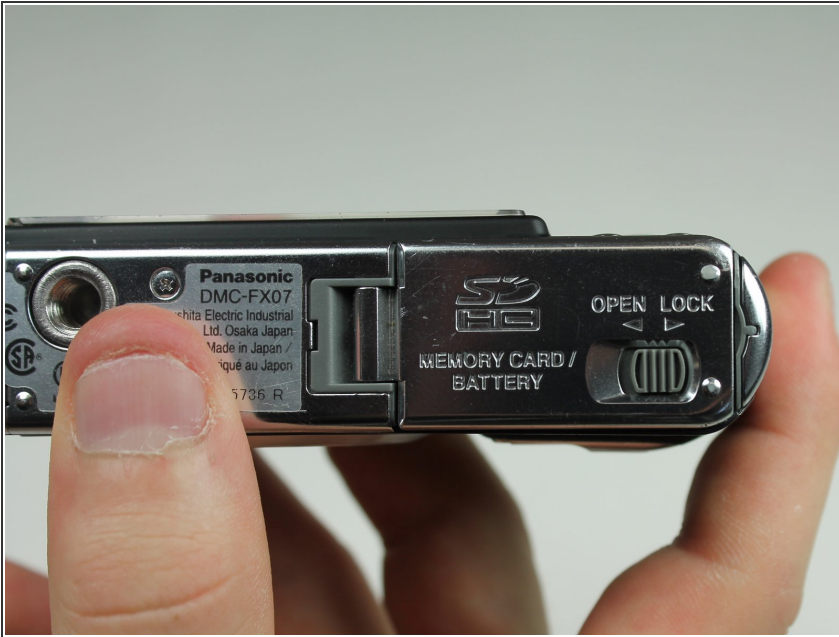
This guide will show you how to remove the top cover of your camera so you can replace it.



TOOLS:

- [Phillips #00 Screwdriver](#) (1)
 - [Spudger](#) (1)
-

Step 1 — Battery



- Move the switch on the battery door to the Open position.
- ❗ The door will automatically swing open after you let it go.

Step 2



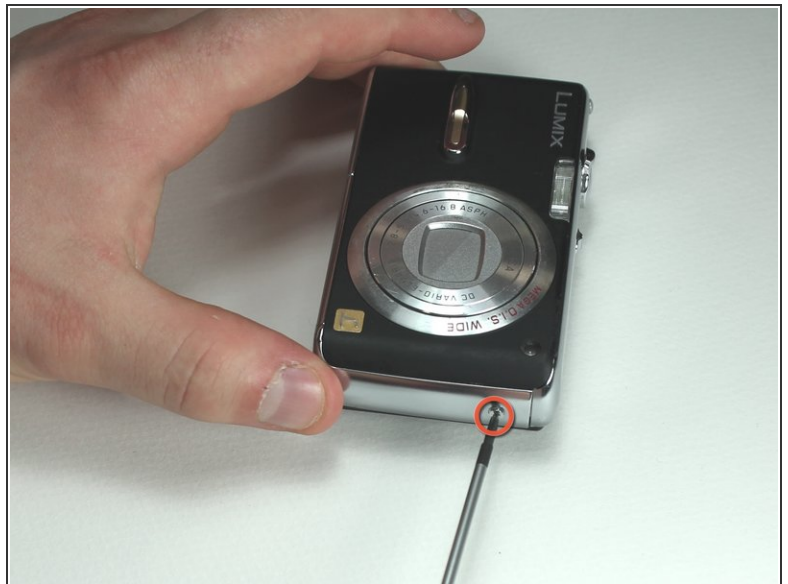
- Push the small gray tab on the top right corner to the left. The battery will pop out slightly.
- Keep your finger clear of the battery when it pops out.

Step 3 — Memory Card



- Push the memory card in and let go.
- ❗ The memory card will pop out slightly.
- Pull out the memory card.

Step 4 — Back Cover



- Unscrew the small screws on the sides of the camera.
- ❗ The screws on the left side(#00P, 4.7mm) are longer than the screw on the right side(#00P, 3.3mm).

Step 5



- Unscrew the three small screws on the bottom(#00P, 3.3mm).

i The bottom will fall off.

Step 6



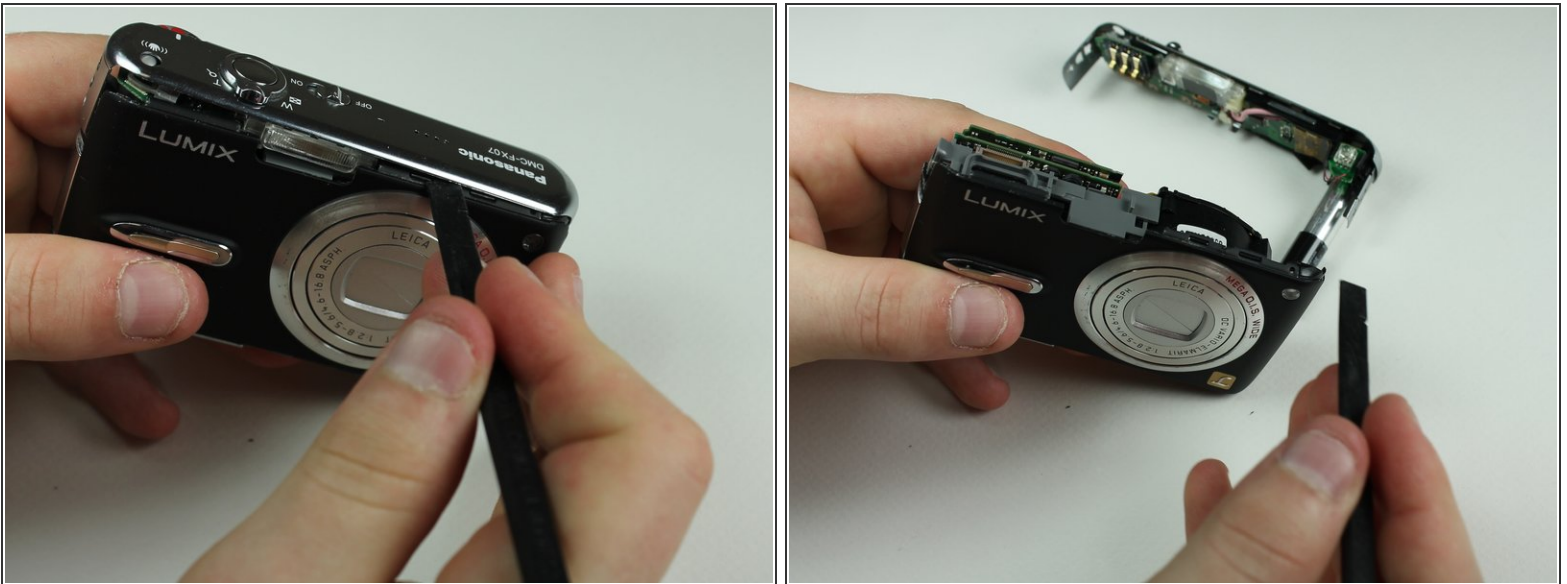
- Lift up the bottom back cover by prying the bottom edge with the spudger.
- Gently lift up the back cover with your hand from the bottom to the top.

Step 7



- Lift the tabs on the ZIF connectors.
- The ribbon cables should easily come out of the ZIF connectors.

Step 8 — Top Cover



- Using the spudger, pry off the top cover by gliding the spudger along the entire edge between the top cover and the front cover.

 Be careful not to damage the cylindrical capacitor on the circuit board under the top cover.

To reassemble your device, follow these instructions in reverse order.