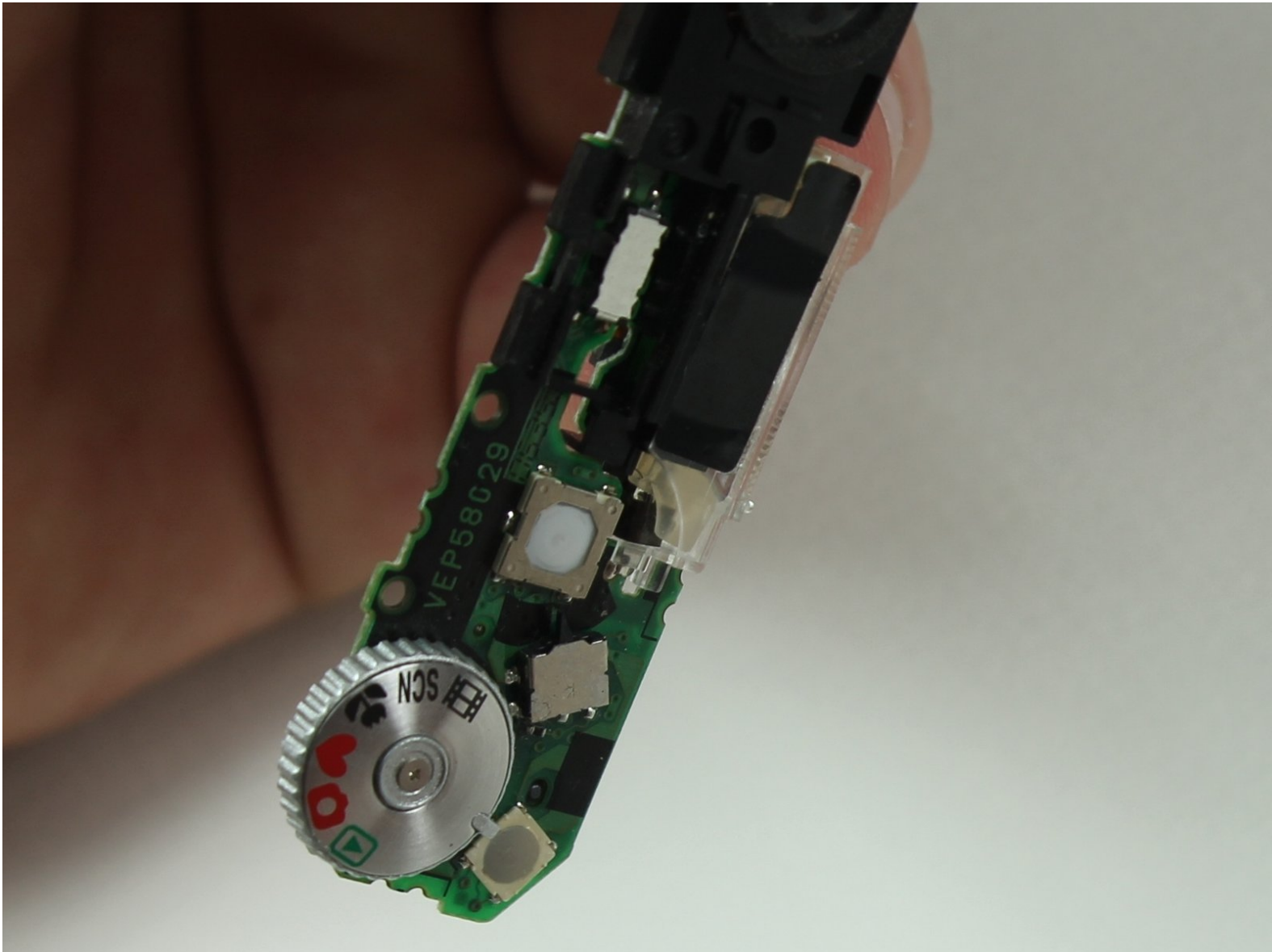




Panasonic Lumix DMC-FX07 Top Panel Buttons Replacement

Replace your top panel buttons so you can actually take a picture.

Written By: Karissa



INTRODUCTION

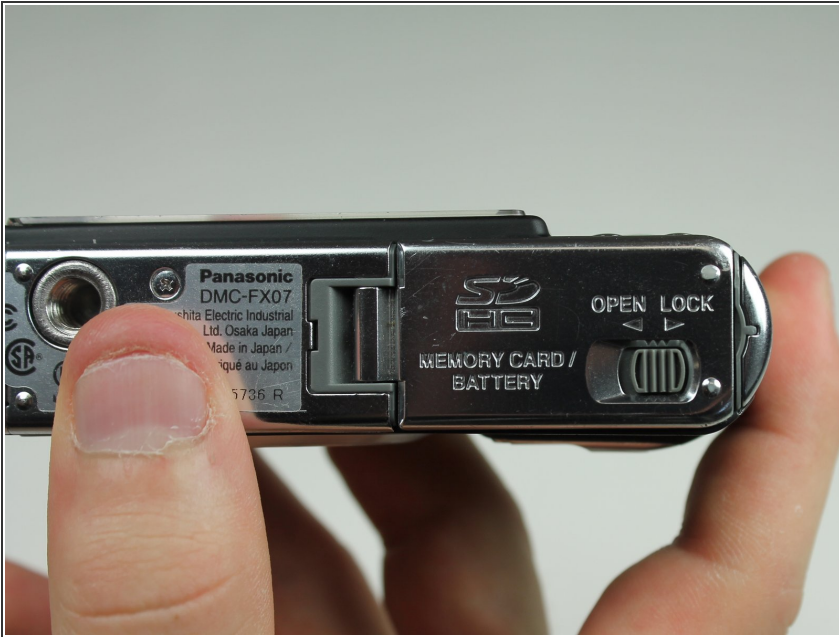
This guide will show you how to remove the top panel buttons so you can install new ones.



TOOLS:

- [Phillips #00 Screwdriver](#) (1)
 - [Spudger](#) (1)
-

Step 1 — Battery



- Move the switch on the battery door to the Open position.
- ⓘ The door will automatically swing open after you let it go.

Step 2



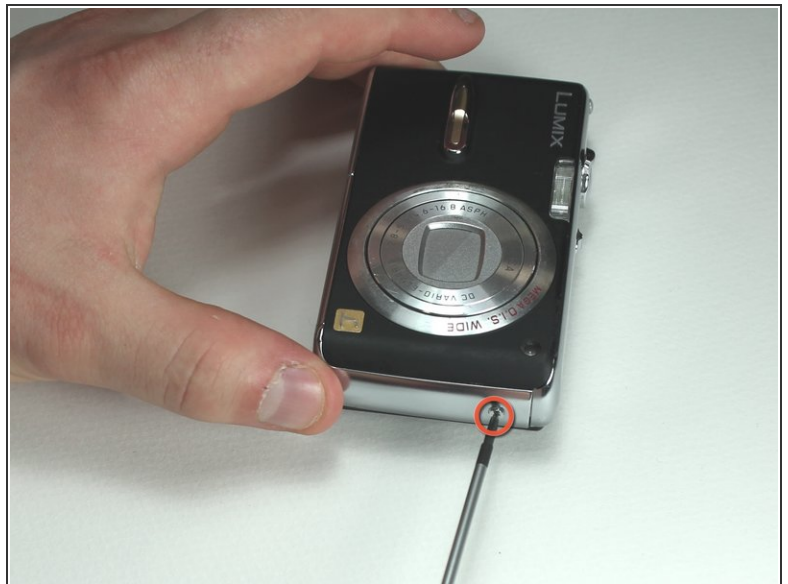
- Push the small gray tab on the top right corner to the left. The battery will pop out slightly.
- Keep your finger clear of the battery when it pops out.

Step 3 — Memory Card



- Push the memory card in and let go.
- ❗ The memory card will pop out slightly.
- Pull out the memory card.

Step 4 — Back Cover



- Unscrew the small screws on the sides of the camera.
- ❗ The screws on the left side(#00P, 4.7mm) are longer than the screw on the right side(#00P, 3.3mm).

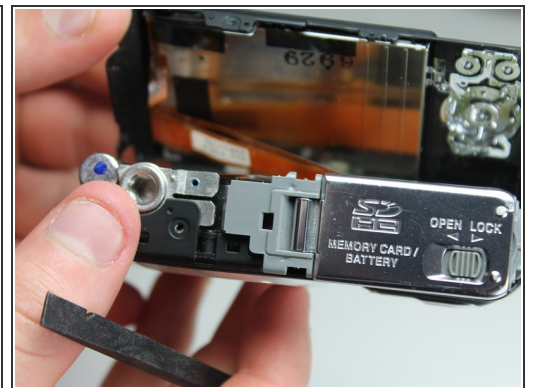
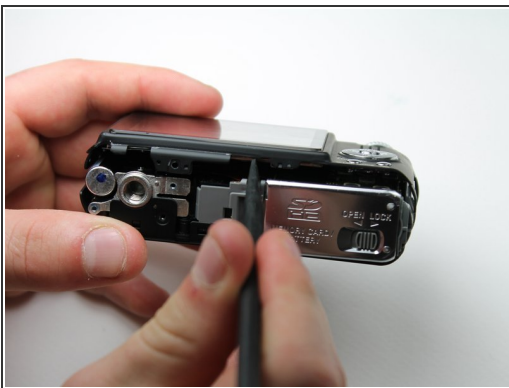
Step 5



- Unscrew the three small screws on the bottom(#00P, 3.3mm).

i The bottom will fall off.

Step 6



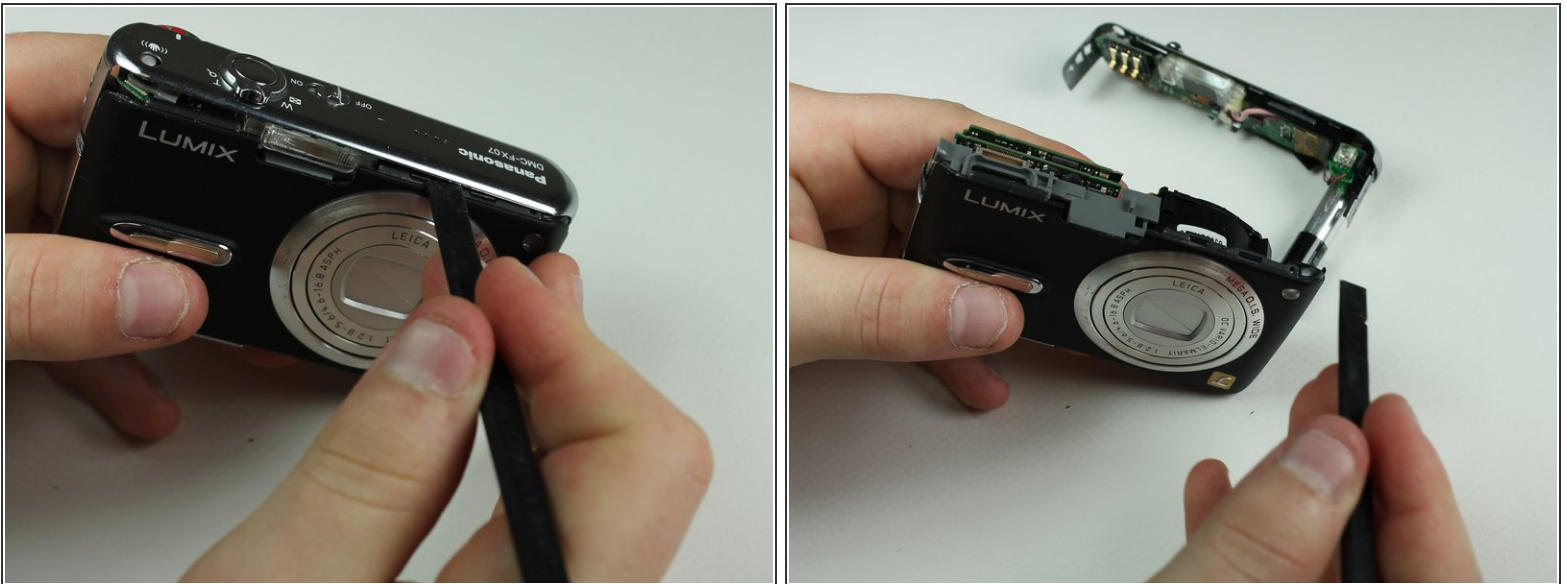
- Lift up the bottom back cover by prying the bottom edge with the spudger.
- Gently lift up the back cover with your hand from the bottom to the top.

Step 7



- Lift the tabs on the ZIF connectors.
- The ribbon cables should easily come out of the ZIF connectors.

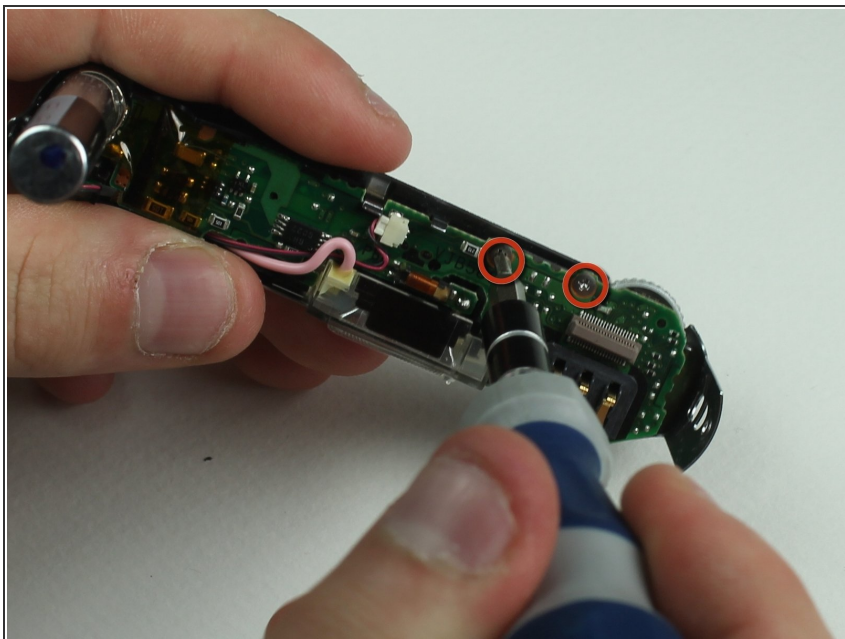
Step 8 — Top Cover



- Using the spudger, pry off the top cover by gliding the spudger along the entire edge between the top cover and the front cover.

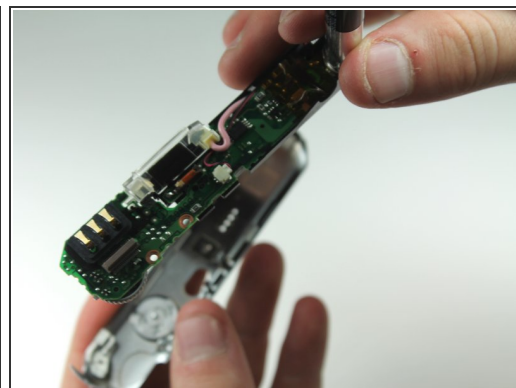
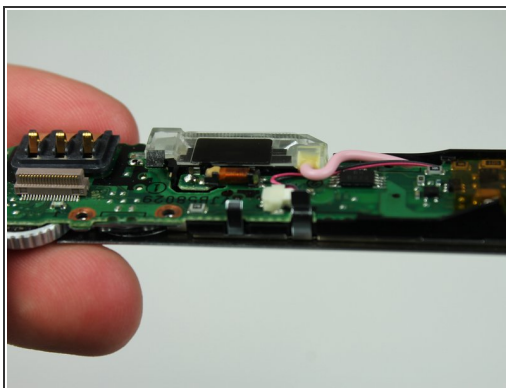
⚠ Be careful not to damage the cylindrical capacitor on the circuit board under the top cover.

Step 9 — Top Panel Buttons




- Unscrew the small screws beneath the top cover(#00P, 1.7mm).

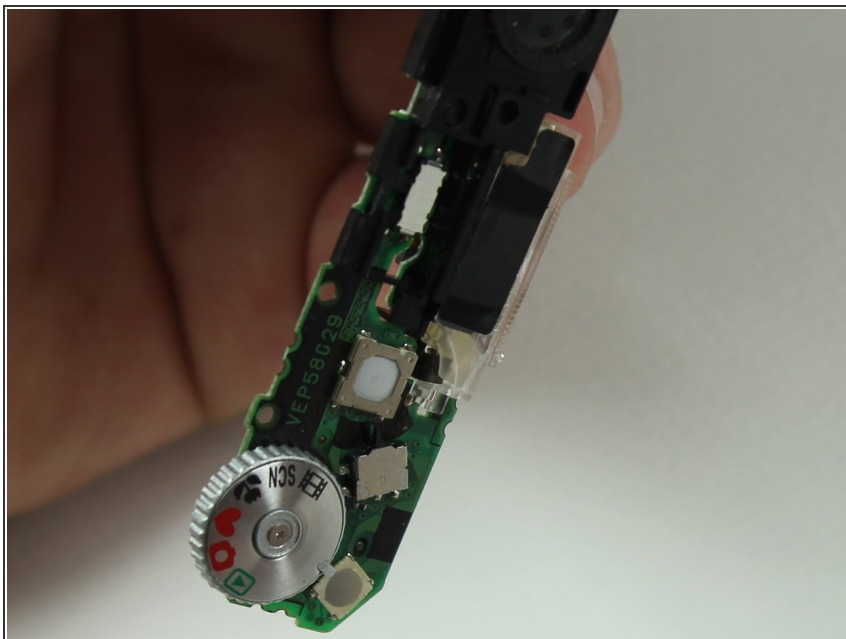
Step 10



- Lift the motherboard out with your hand by pushing the tabs out and pulling the motherboard up.

 The on/off switch and the anti-shake button may fall out.

Step 11



- ① The buttons are hardwired into the top motherboard board.
- To replace the top buttons, you must replace the top motherboard.

To reassemble your device, follow these instructions in reverse order.