



Panasonic Lumix DMC-FX37 LCD Screen Replacement

A replacement guide showing the steps to replacing the LCD screen on the Panasonic Lumix DMC-FX37.

Written By: Ben DuBose



INTRODUCTION

This guide is fairly simple in regards to the general disassembly of the device. However, it does require caution when dealing with the delicate ribbon cables. Additionally, the LCD screen is secured in place by a small amount of adhesive. If you are having any difficulty prying free the screen, I would suggest applying a very low amount of heat to the front of the screen (display side) to melt the adhesive.



TOOLS:

- [Spudger](#) (1)
- [Phillips #000 Screwdriver](#) (1)
- [iFixit Opening Tools](#) (1)



PARTS:

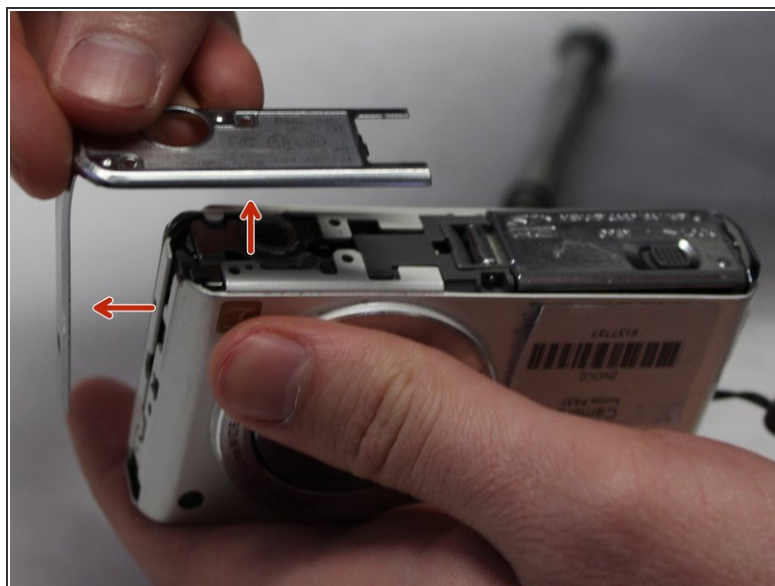
- [replacement LCD screen](#) (1)

Step 1 — Panasonic Lumix DMC-FX37 Disassembly



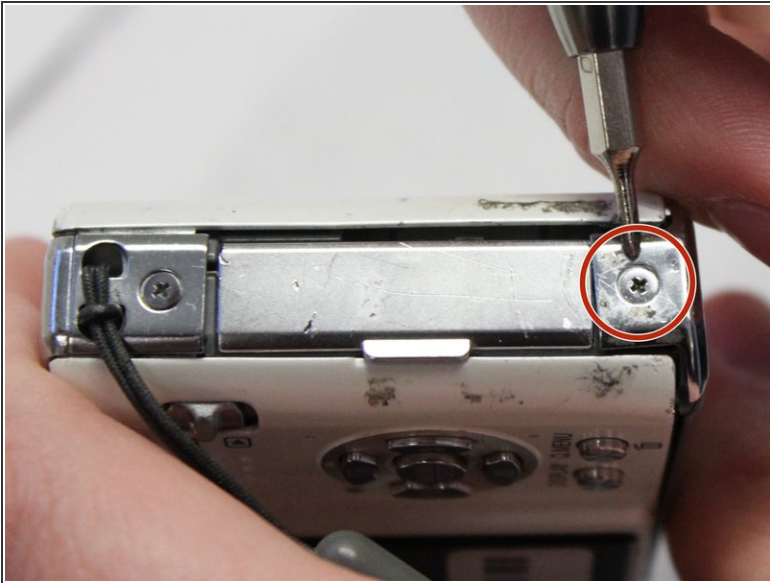
- Remove both of the 3 mm screws on the bottom of the camera connected to the side panel.

Step 2



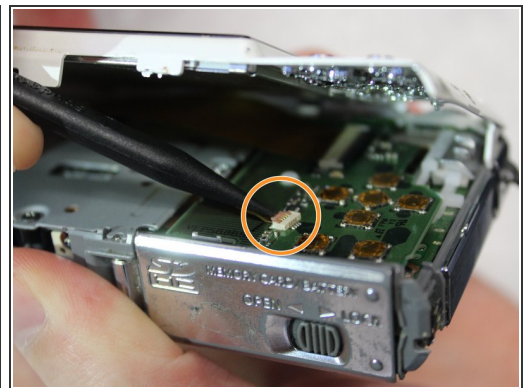
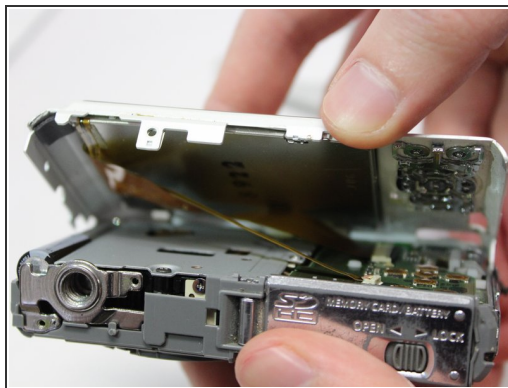
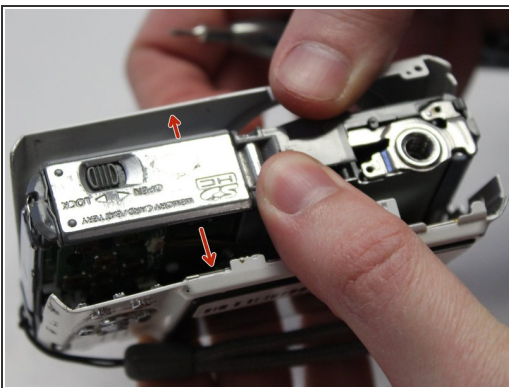
- Remove the remaining 3 mm screw holding on the side panel and remove the panel entirely.

Step 3



- On the opposite side of the camera, remove the two 3 mm screws.
- Remove the bottom side panel and place it with its respective 3 mm screw.

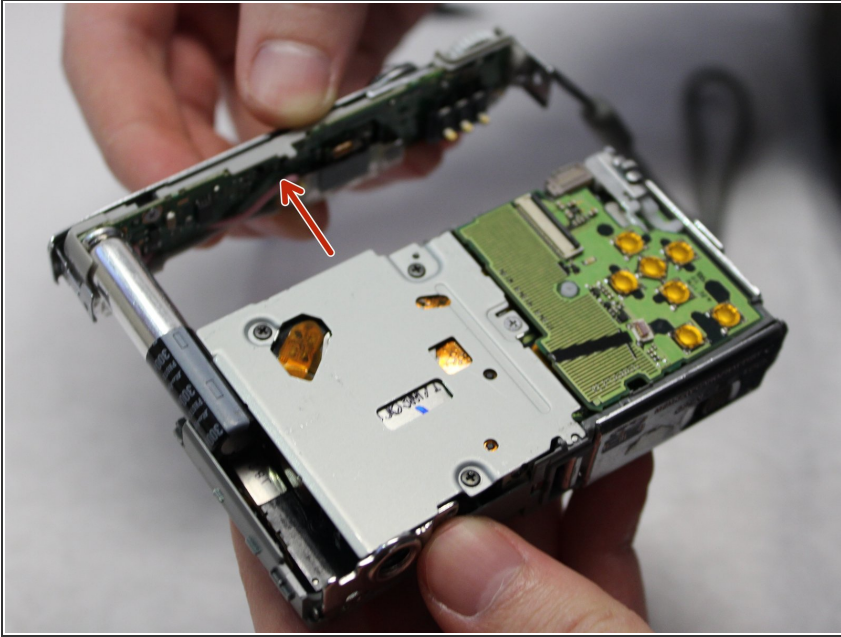
Step 4



- Remove the front panel (the panel around the lens casing) from the camera.
- Remove the two ribbon cables connected to the back panel (the panel this the LCD screen) by lifting up on their respective tabs and gently pulling out the cord.
- ⚠ Caution: When removing the back panel, the two ribbon cables are relatively delicate and must both be disconnected before the panel can be entirely removed.
- Remove the back panel from the camera.

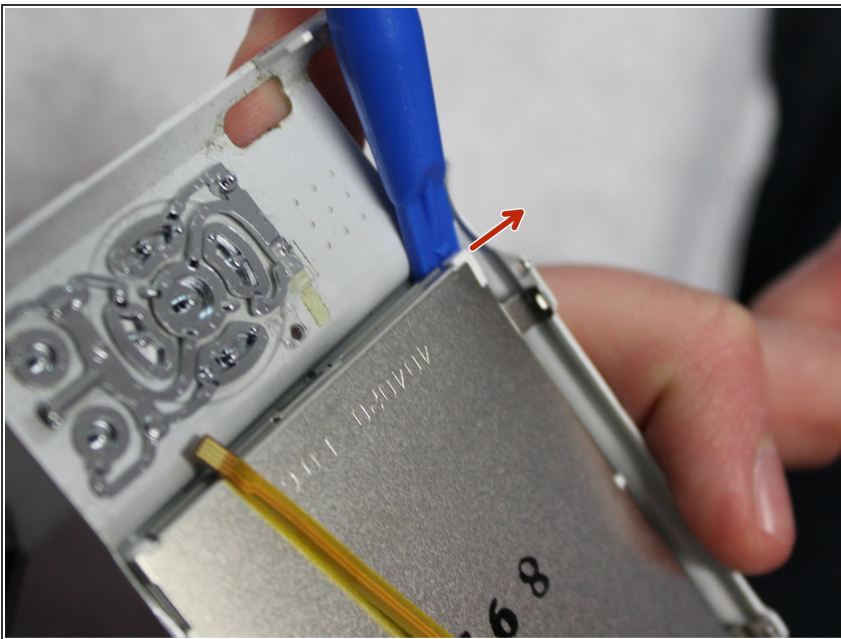
This document was generated on 2019-09-22 02:04:47 AM (MST).

Step 5



- Remove the top control panel (connected to the flash battery) from the camera.
- ⚠ The top control panel is connected to the rest of the camera by a delicate multi-pin plug. Be careful as to not bend the pins!

Step 6 — LCD Screen



- Use a plastic opening tool to pry off the LCD screen.
- ⓘ There is a small amount of adhesive lining the inside edges of the LCD screen. If you are having trouble prying off the screen, apply a small amount of heat to the front of the screen to melt the adhesive.

To reassemble your device, follow these instructions in reverse order.