



Panasonic Lumix DMC-G5 Diopter Adjustment Dial Replacement

Use this guide to replace a faulty diopter adjustment dial.

Written By: Gabriel Gonzalez Jr



INTRODUCTION

Replacing the diopter adjustment dial requires removal of the rear panel of the device, as well as the removal of several small screws.



TOOLS:

- [iFixit Opening Tools](#) (1)
 - [JIS Driver Set](#) (1)
-

Step 1 — Diopter Adjustment Dial



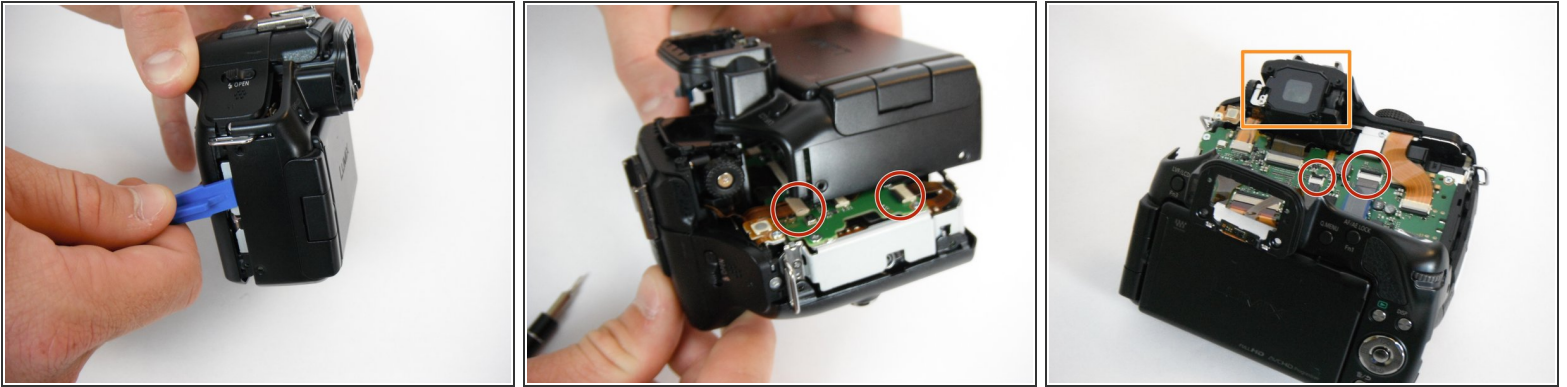
- Remove the four 4.6mm J000 Phillips screws from the sides and two 3.2mm J000 Phillips screws along the bottom.

Step 2



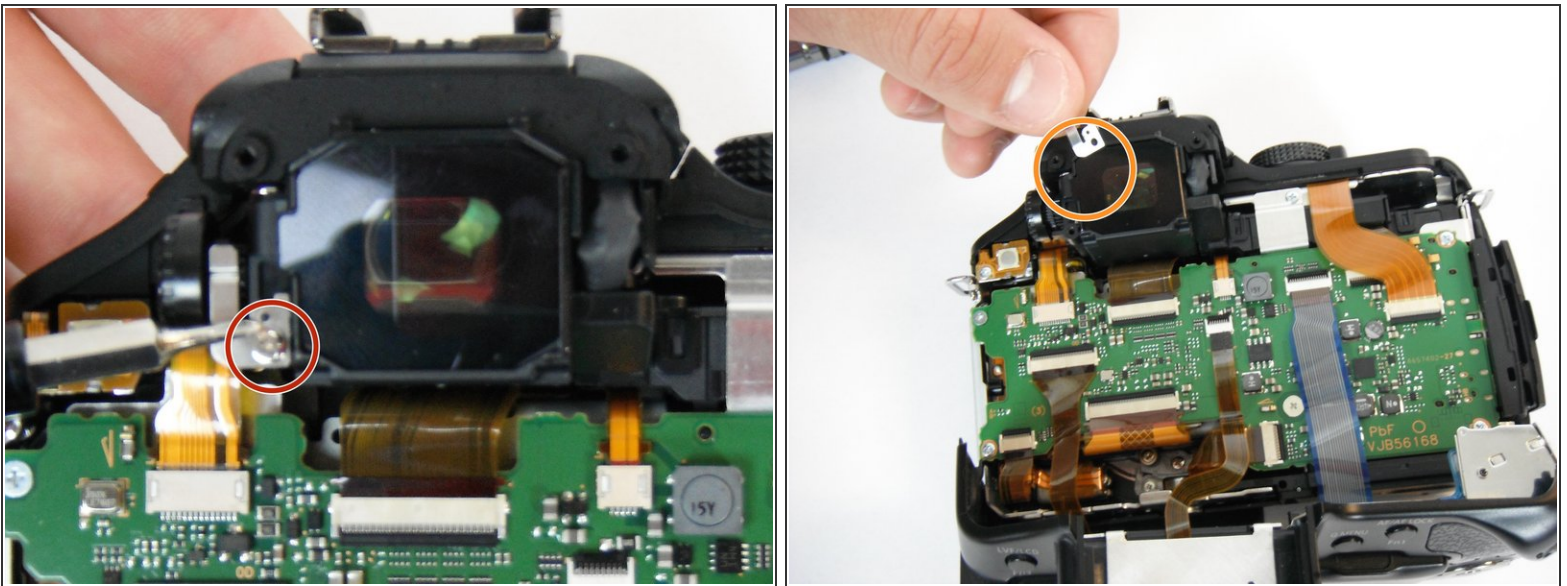
- Remove the two 3.2mm J000 Phillips screws located on the bottom edge of the viewfinder cover.
- Carefully remove the viewfinder cover.
- Remove the two 4.4mm J000 Phillips screws located near the top edge of the viewfinder.

Step 3



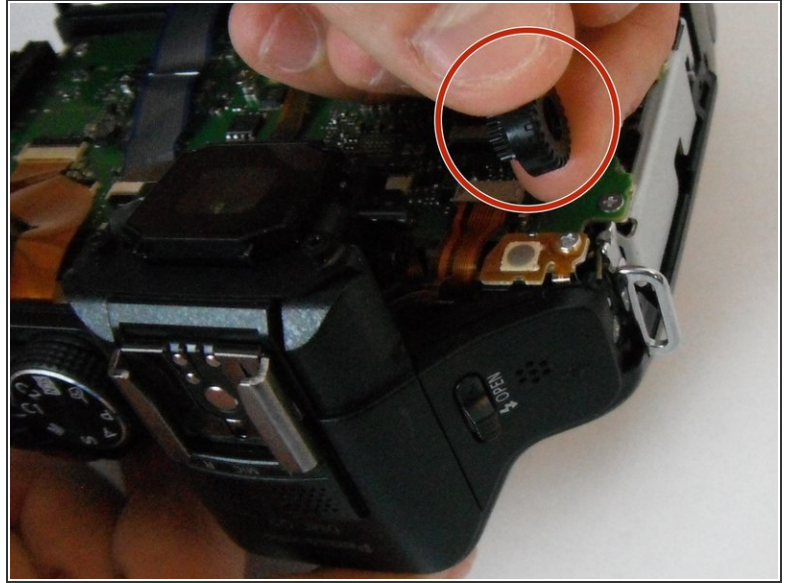
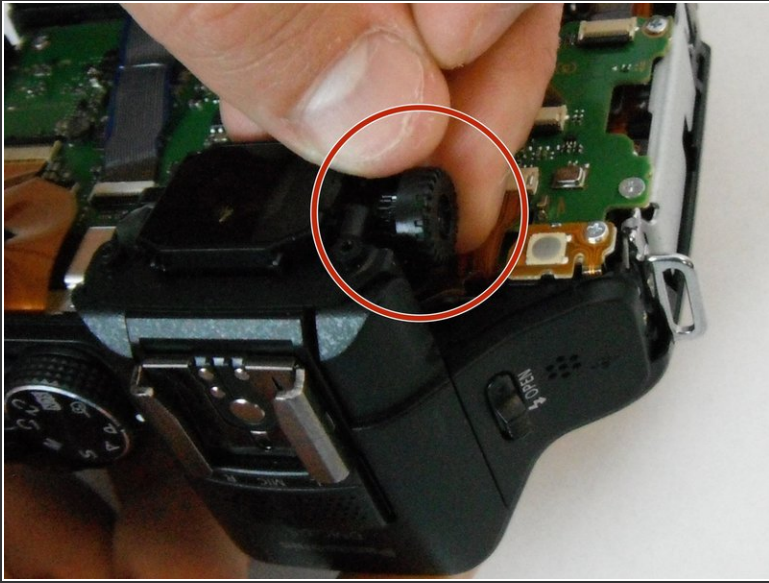
- Slide the Wide Plastic Opening Tool upwards along the underside of the rear casing.
 - ❗ Be careful not to disconnect the filament connections. Reinserting them can be difficult.
- Slowly lower the casing into the position shown.

Step 4



- Use the Screwdriver J000 Phillips Head to remove the screw located at the lower-left corner of the face of the viewfinder glass.
- Carefully lift the L-shaped clicker underneath the previously removed screw.

Step 5



- Slide the faulty diopter adjustment dial off the rod.

- ☑ Replace the diopter dial with a 1-cm wheel.

To reassemble your device, follow these instructions in reverse order.