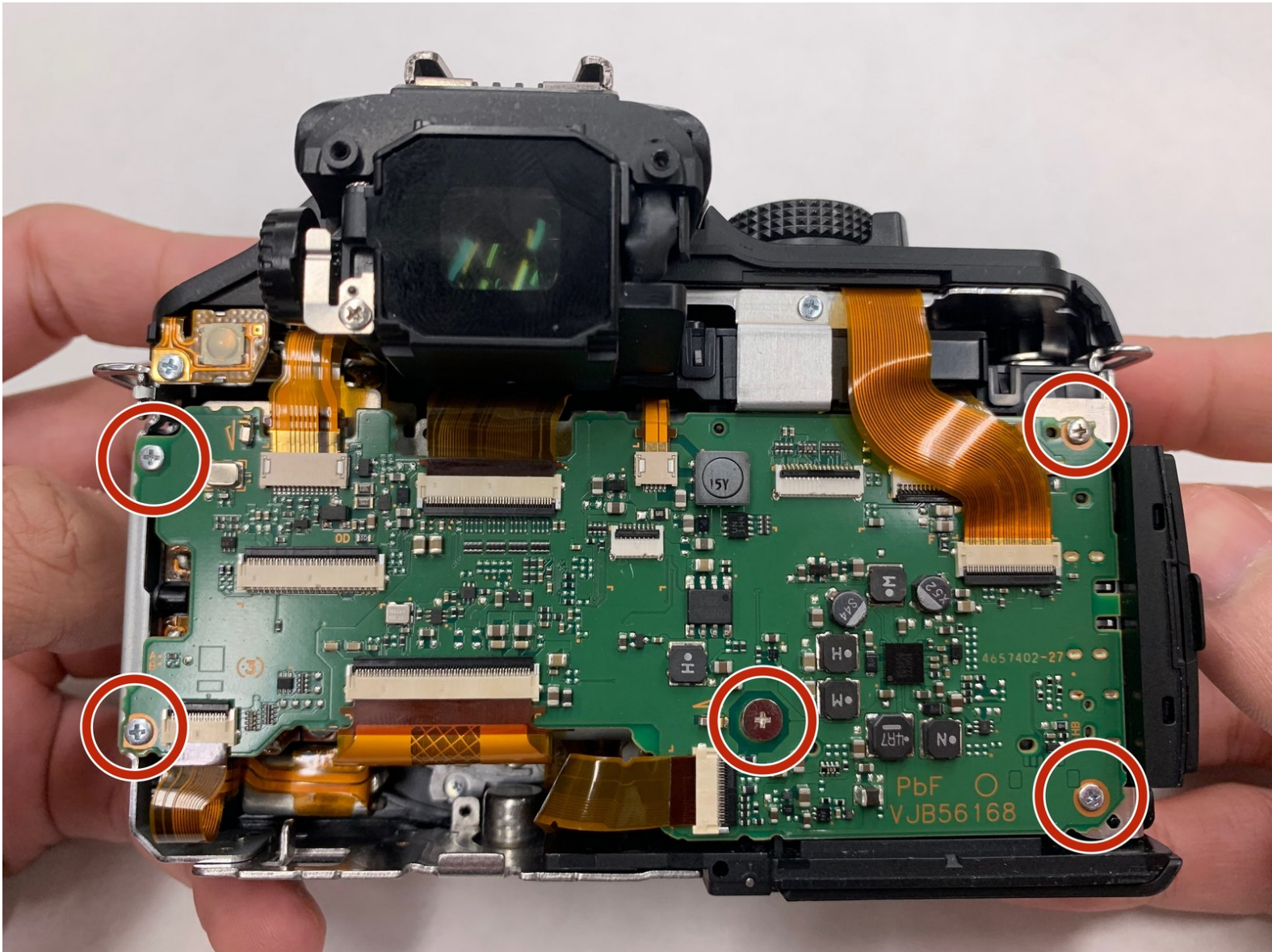




Panasonic Lumix DMC-G5 Motherboard Replacement

Use this guide to replace your Panasonic Lumix DMC-G5 motherboard.

Written By: Khairul Samsudin



INTRODUCTION

Panasonic Lumix DMC-G5 Motherboard replacement is required if the motherboard is damaged. This guide requires removal of several small screws and detachment of ribbon cables.



TOOLS:

- [JIS #000 Screwdriver](#) (1)
 - [iFixit Opening Tools](#) (1)
-

Step 1 — Back Panel



- Remove four JIS #000 screws from the bottom part of the camera.

Step 2



- Remove two JIS #000 screws from both sides of the camera.

Step 3



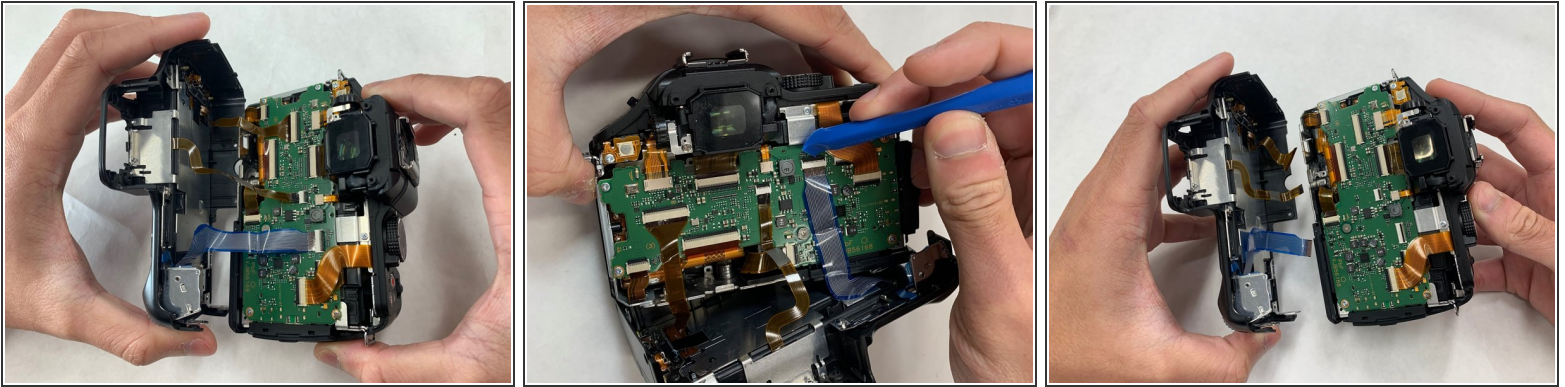
- Remove two JIS #000 screws under the viewfinder.

Step 4



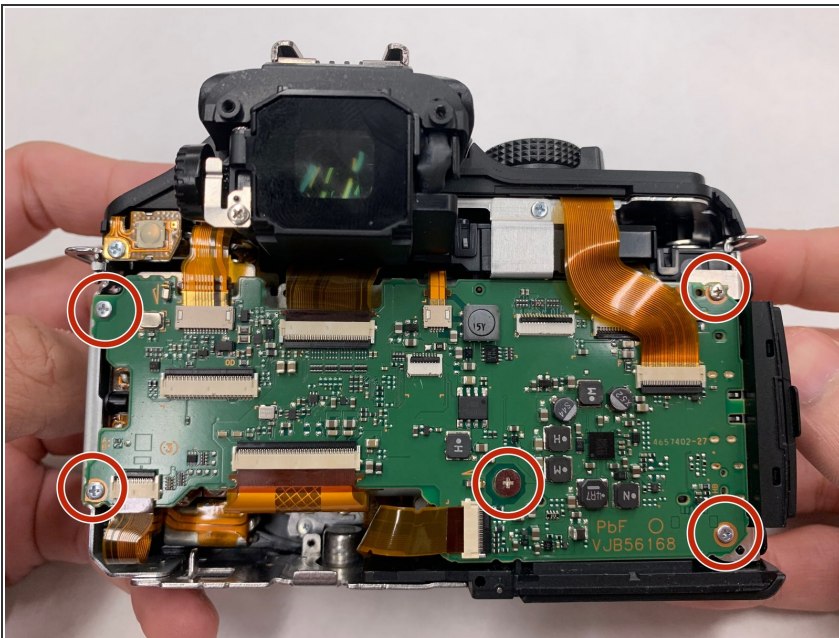
- Remove the viewfinder lid.
- Then, remove the two JIS #000 screws on the viewfinder.

Step 5



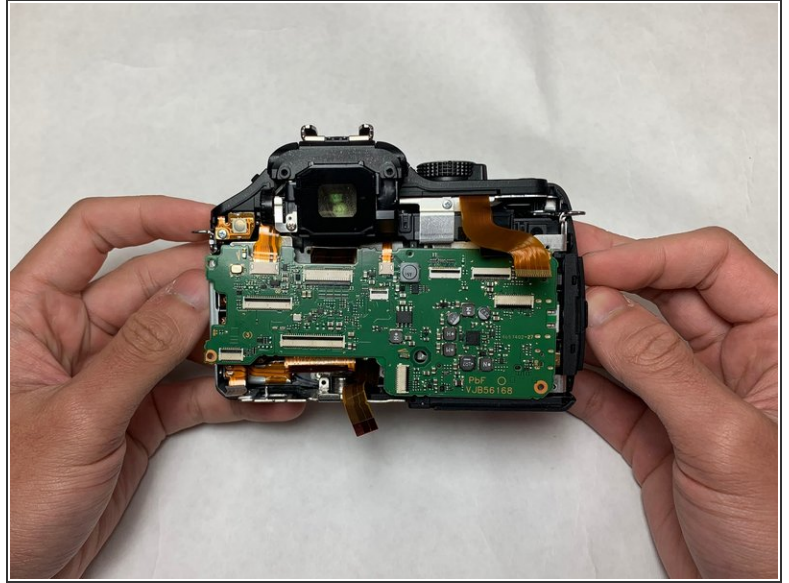
- Gently remove the back panel from the camera.
- Unclip the ribbon cable from the motherboard using Wide Plastic Opening Tools and pull the cable gently.

Step 6 — Motherboard



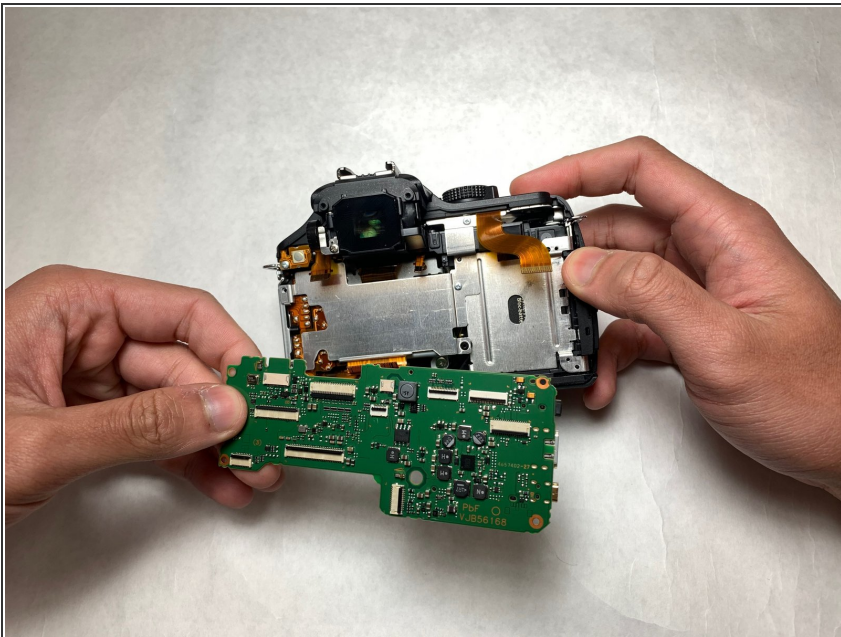
- Remove the JIS #000 screws on the motherboard.

Step 7



- Unclip the ribbon cable using the Wide Plastic Opening Tool on the motherboard.
- Gently pull out the cable.

Step 8



- Pull out the motherboard from the camera.

To reassemble your device, follow these instructions in reverse order.