



Panasonic Lumix DMC-G7 LCD Panel Replacement

This guide shows the required steps to remove and replace the LCD panel in the Panasonic Lumix DMC-G7.

Written By: Julien Mindlin-Davidson



INTRODUCTION

If the LCD panel has usability inhibiting number of dead pixels, or if the backlight comes on but no image is shown (or vice versa), then use the following guide to replace the LCD unit.

TOOLS:

- [iFixit Opening Tools](#) (1)
 - [iFixit Opening Picks set of 6](#) (1)
 - [Phillips #0 Screwdriver](#) (1)
 - [1.0 mm Flathead Screwdriver](#) (1)
-

Step 1 — LCD Panel



- Unlock and open the battery compartment on the bottom of the camera.
- Remove both the battery and SD card.

Step 2



- Remove the four indicated 3.0mm long black screws from the bottom of the camera and the viewfinder housing using a PH0 Phillips screwdriver.
- ⓘ There are four screws on the bottom of the camera. Only remove the two nearest to the screen.

Step 3



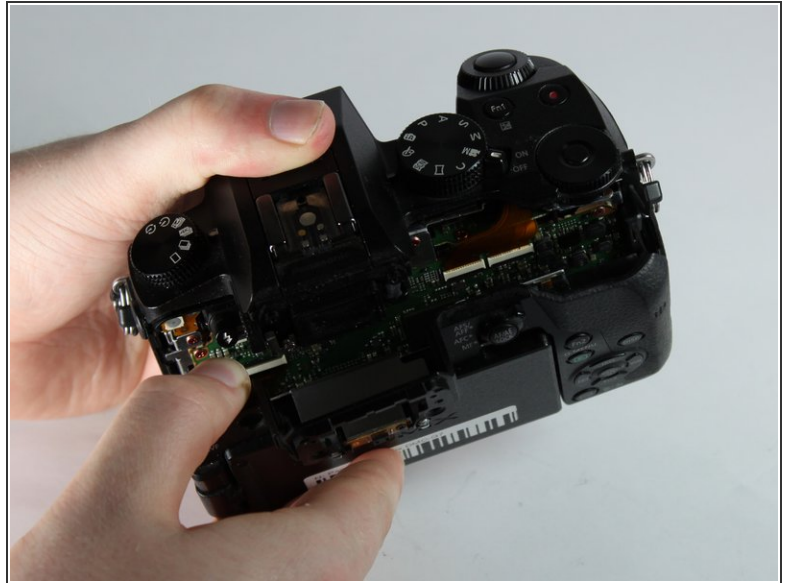
- Remove the four indicated 6.0mm long black screws using a PH0 Phillips screwdriver.
- i** Three of the screws are located on the sides of the chassis and one is directly underneath the battery compartment lid.

Step 4



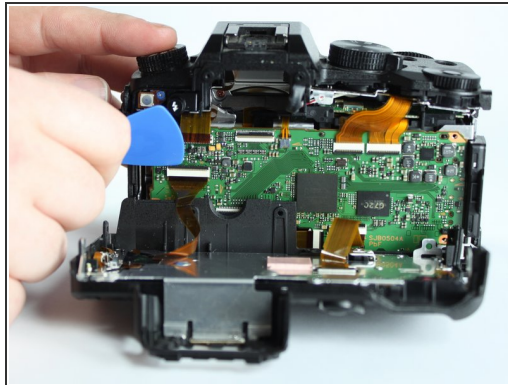
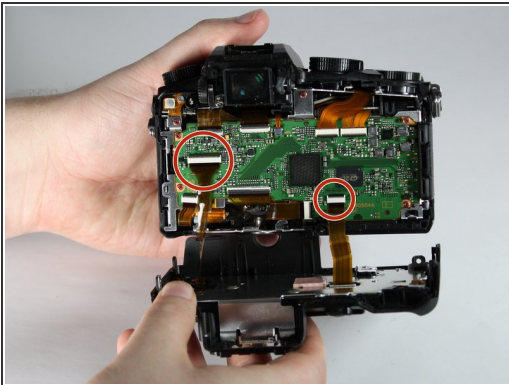
- Remove the viewfinder eye cup by pulling up and out from the bottom to separate the locking clips from the camera.
- !** Do not flex the eye cup too aggressively as it may lose its shape.
- Remove the two indicated silver 3.5mm long screws adjacent to the viewfinder screen using a PH0 Phillips screwdriver.

Step 5



- Use an iFixit opening tool (or similarly long and thin object) to insert into the gap between the two camera halves and pry the camera apart from the top.

Step 6



- Remove the two indicated ribbon cables before separating the two halves of the camera.
- Using a flat object, pry open the black tabs above the ribbon cable connectors by gently pulling away from the motherboard.
- i* An opening pick is recommended, but any equally small and flat object will work.
- ⚠** Ribbon cables are fragile, so put as little stress on them as possible.

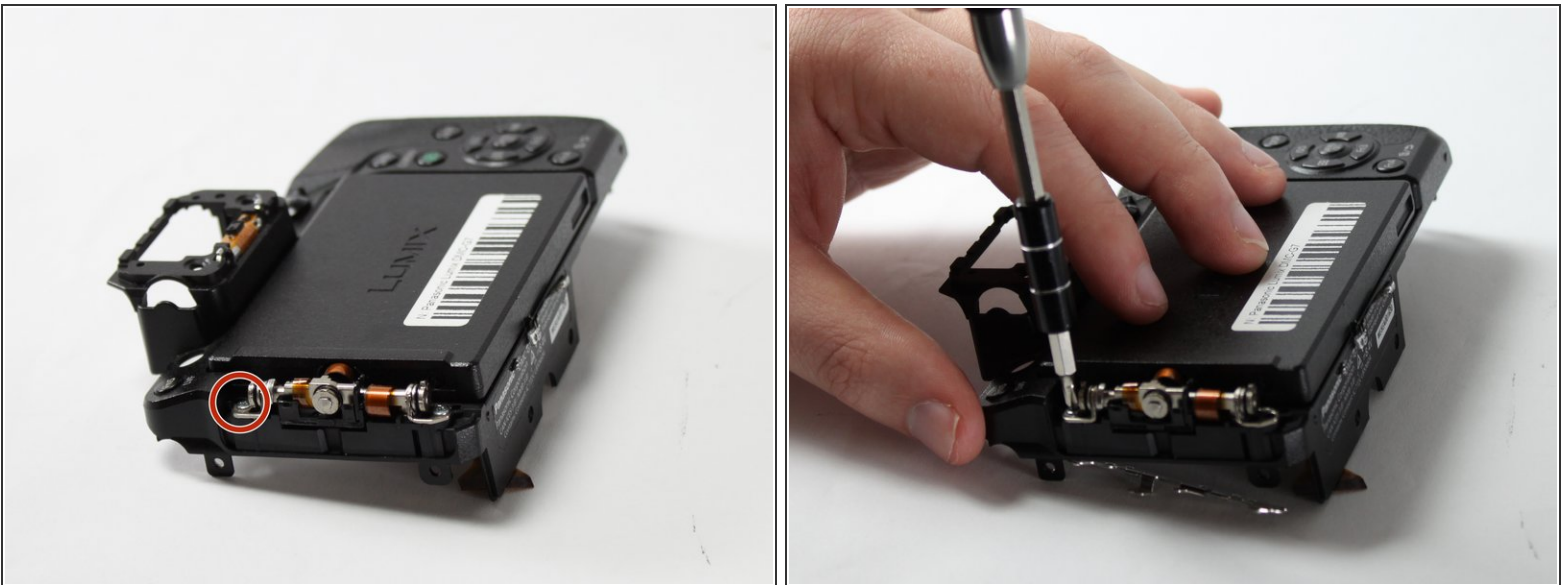
Step 7



- On the inside half of the camera mounting the LCD, remove the two indicated 6.0mm black screws using a Phillips PH0.

i The plate covering the hinge will likely fall off after removing these screws.

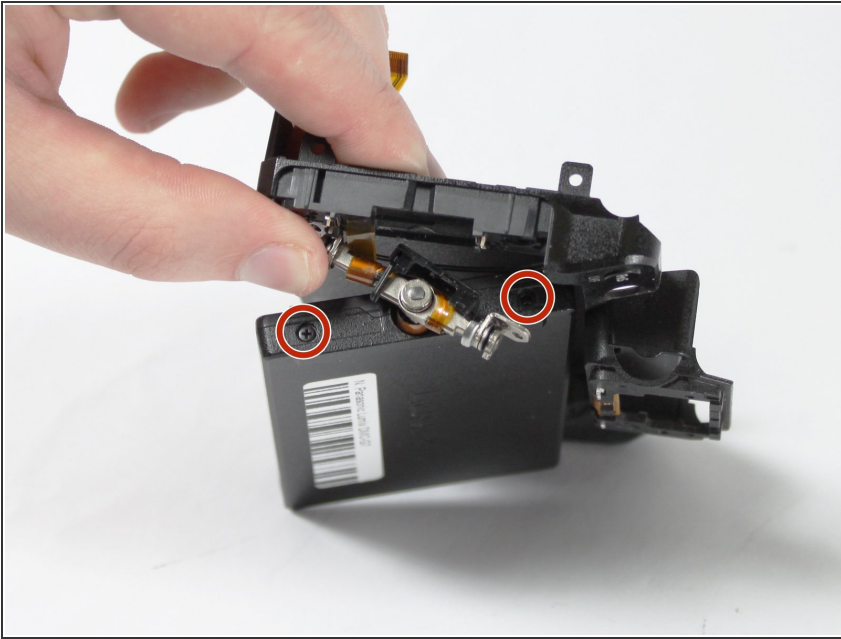
Step 8



- On the back half (the side with the LCD panel), remove the indicated 3.0mm long silver screw on the hinge using a Phillips PH0.

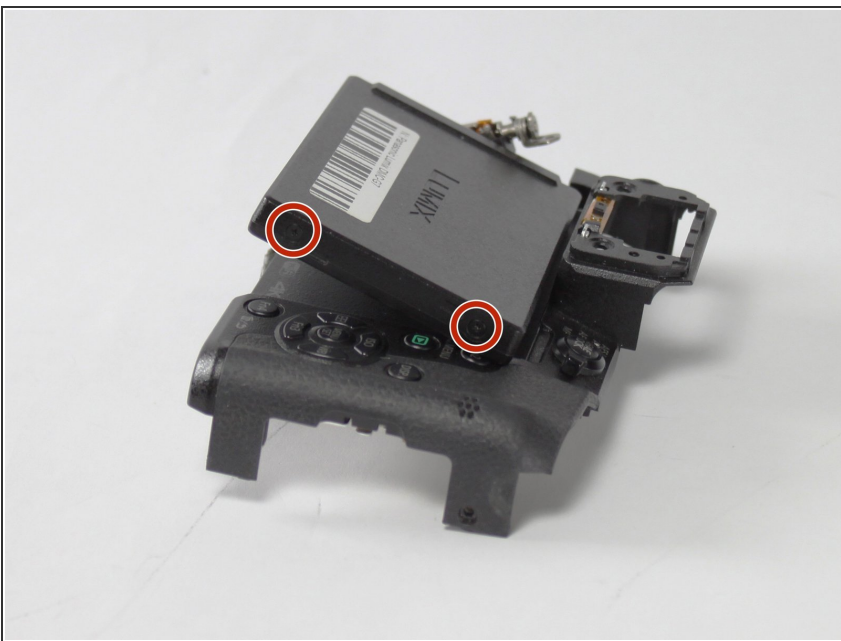
i There are two screws attaching the hinge; however, only the one screw needs to be removed, this will allow the LCD unit to swivel out.

Step 9



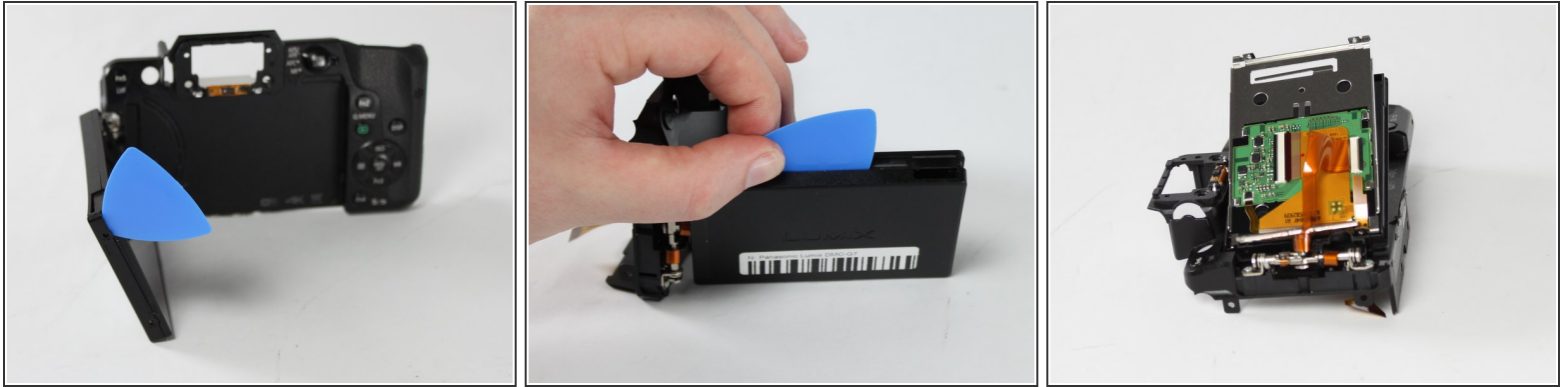
- On the hinge side of LCD panel housing itself, remove the two 4.0mm black screws indicated.

Step 10



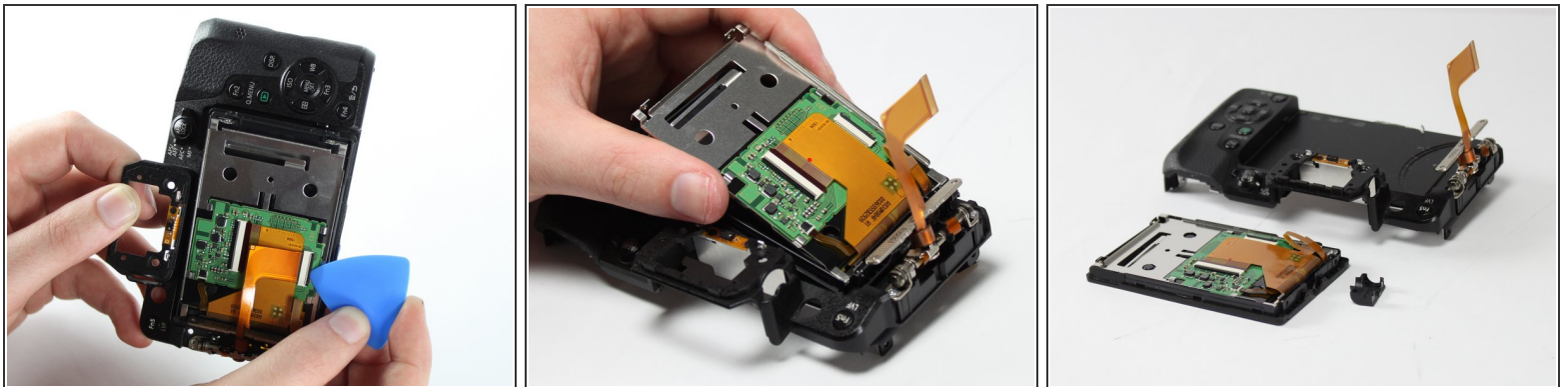
- On the opposite end of the LCD panel housing, remove the two 2.5mm black screws.

Step 11



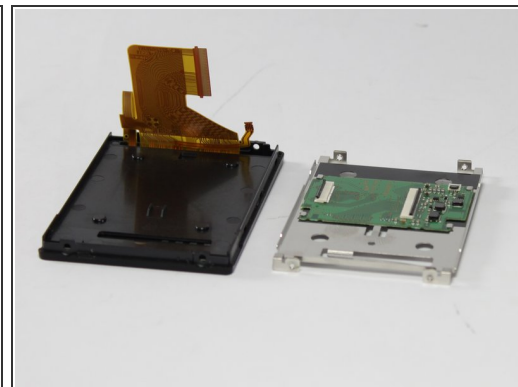
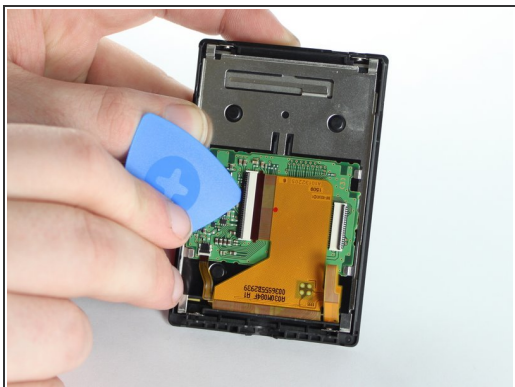
- Insert an iFixit Opening Pick (or guitar pick) into one of the long sides of the LCD panel and move it along the edge until you feel all three locking tabs disconnect.
- Repeat the disconnection of locking tabs on the opposite side of the LCD panel.

Step 12



- One ribbon cable connects the display unit to the camera. Use an opening pick to pry the black tab open and then pull on the cable to disconnect it.

Step 13



- Two ribbon cables connect the LCD panel control board to the panel itself. Remove these the same way as the previous ribbon cable.

ⓘ If you are having trouble finding a replacement LCD panel try these links: [ebay](#) or [Aliexpress](#)

To reassemble your device, follow these instructions in reverse order.