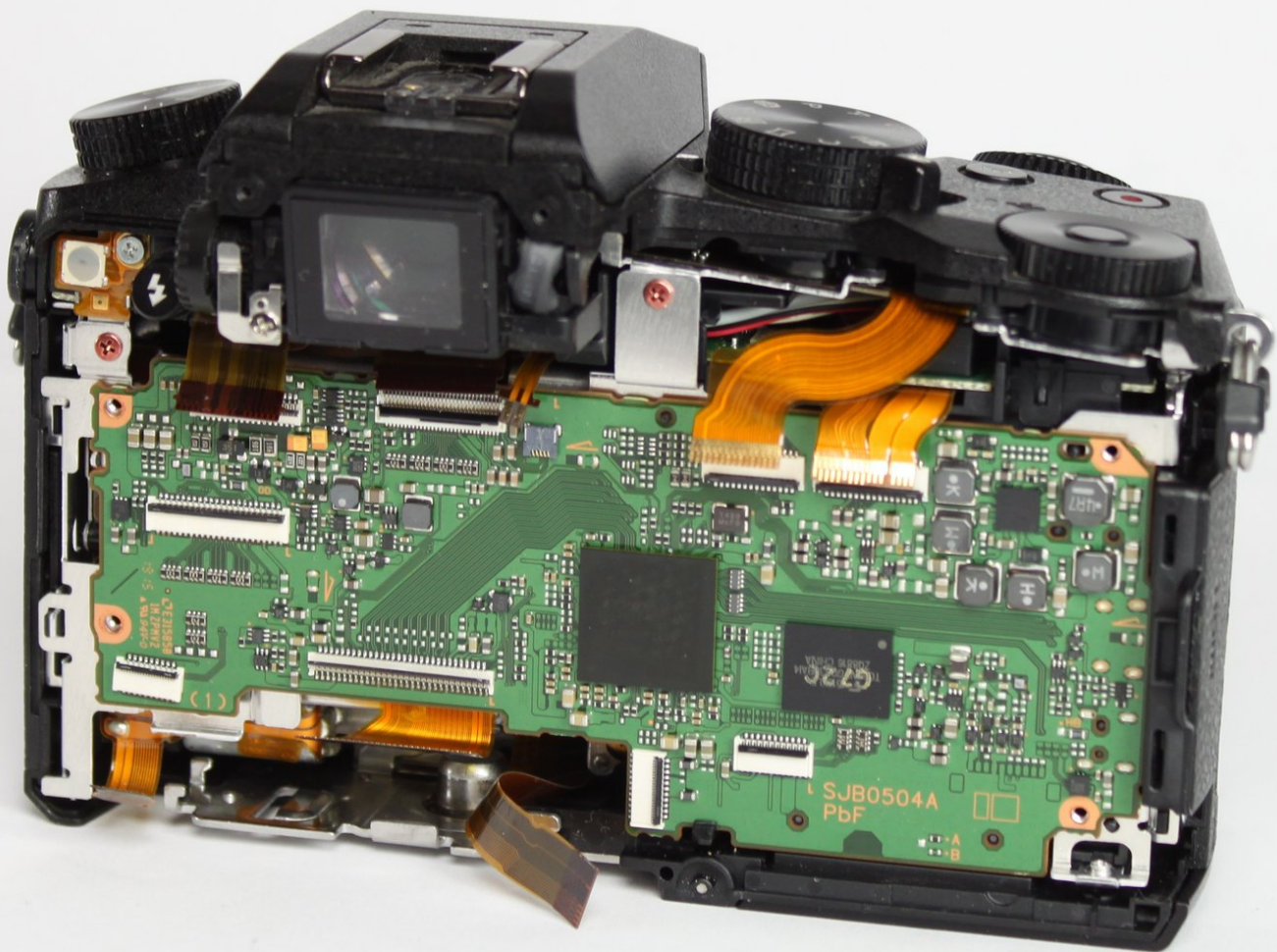




# Panasonic Lumix DMC-G7 Mainboard Replacement

This guide shows how to remove and replace the main printed circuit board in a Panasonic Lumix DMC-G7.

Written By: Jared Lynn



## INTRODUCTION

If the camera does not boot despite the battery being hail and hardy, there could be a fault on the main printed circuit board. Use the following guide to replace the main printed circuit board.

---

### TOOLS:

- [Phillips #0 Screwdriver](#) (1)
  - [iFixit Opening Picks set of 6](#) (1)
  - [iFixit Opening Tools](#) (1)
-

## Step 1 — Mainboard



- Unlock and open the battery compartment on the bottom of the camera.
- Remove both the battery and SD card.

## Step 2



- Remove the four indicated 3.0mm long black screws from the bottom of the camera and the viewfinder housing using a PH0 Phillips screwdriver.
- ⓘ There are four screws on the bottom of the camera. Only remove the two nearest to the screen.

## Step 3



- Remove the four indicated 6.0mm long black screws using a PH0 Phillips screwdriver.
- i** Three of the screws are located on the sides of the chassis and one is directly underneath the battery compartment lid.

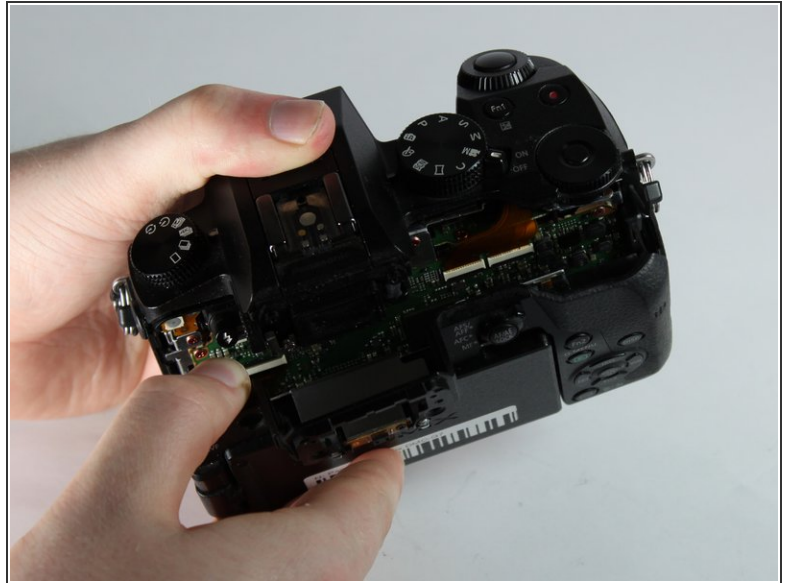
## Step 4



- Remove the viewfinder eye cup by pulling up and out from the bottom to separate the locking clips from the camera.
- !** Do not flex the eye cup too aggressively as it may lose its shape.
- Remove the two indicated silver 3.5mm long screws adjacent to the viewfinder screen using a PH0 Phillips screwdriver.

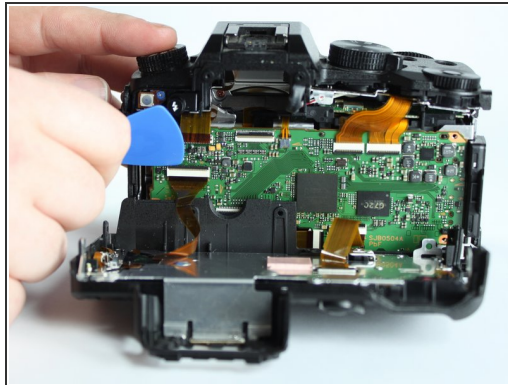
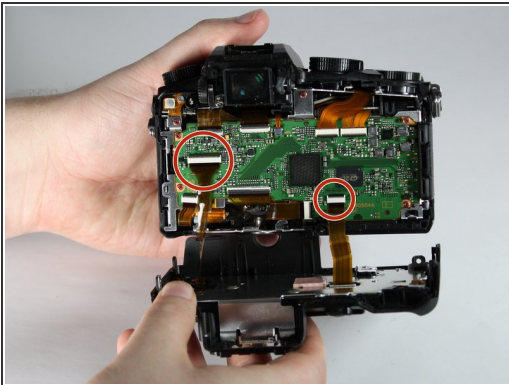


## Step 5



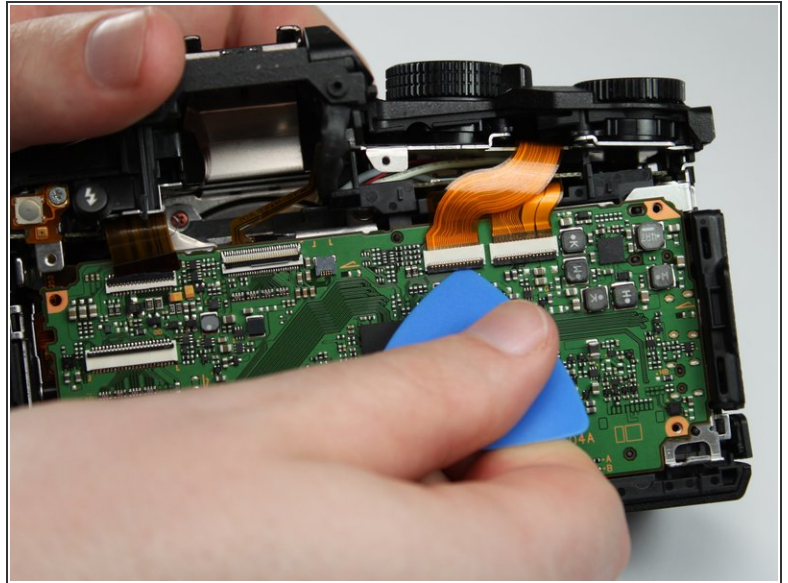
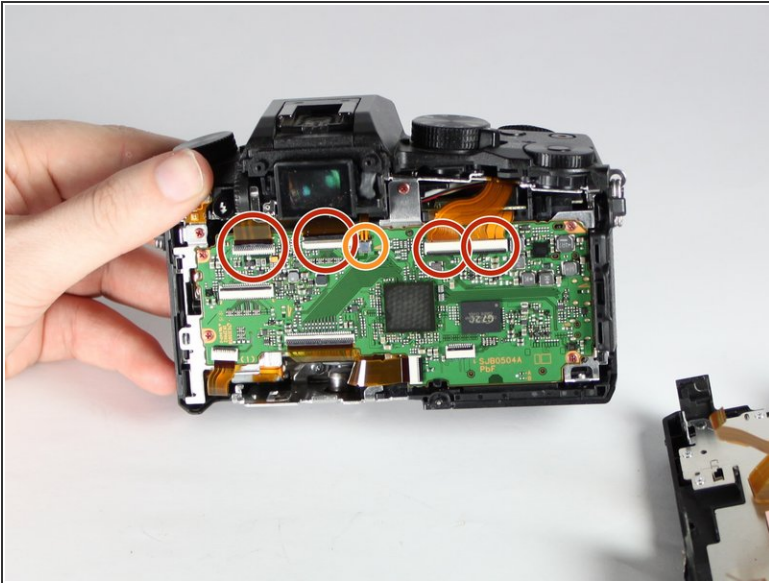
- Use an iFixit opening tool (or similarly long and thin object) to insert into the gap between the two camera halves and pry the camera apart from the top.

## Step 6



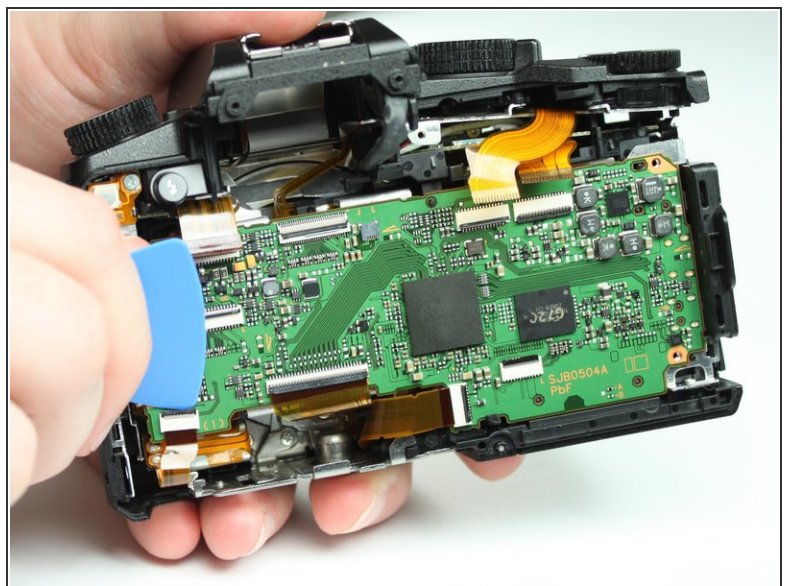
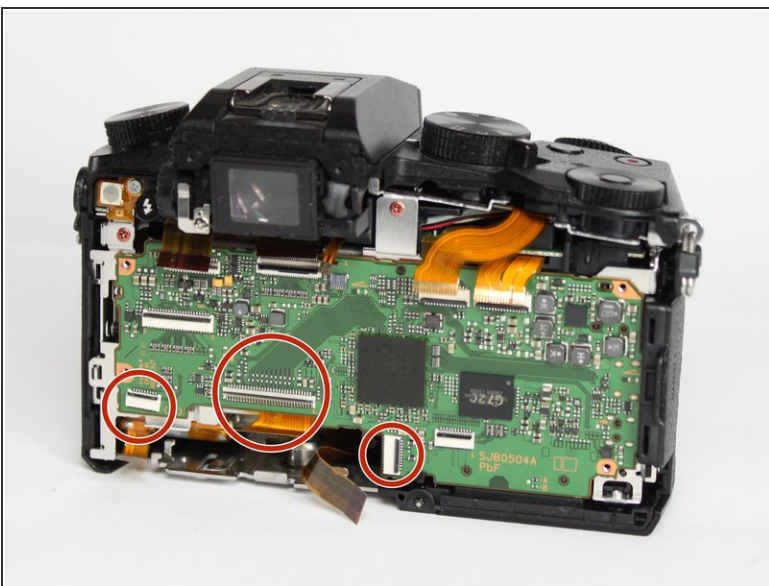
- Remove the two indicated ribbon cables before separating the two halves of the camera.
- Using a flat object, pry open the black tabs above the ribbon cable connectors by gently pulling away from the motherboard.
- ⓘ An opening pick is recommended, but any equally small and flat object will work.
- ⚠ Ribbon cables are fragile, so put as little stress on them as possible.

## Step 7



- Remove the 4 indicated flex cables from top of mainboard
- Remove the indicated small flex cable from top of mainboard.
- ⓘ The small flex cable does not have a lock: simply pull to disconnect it.

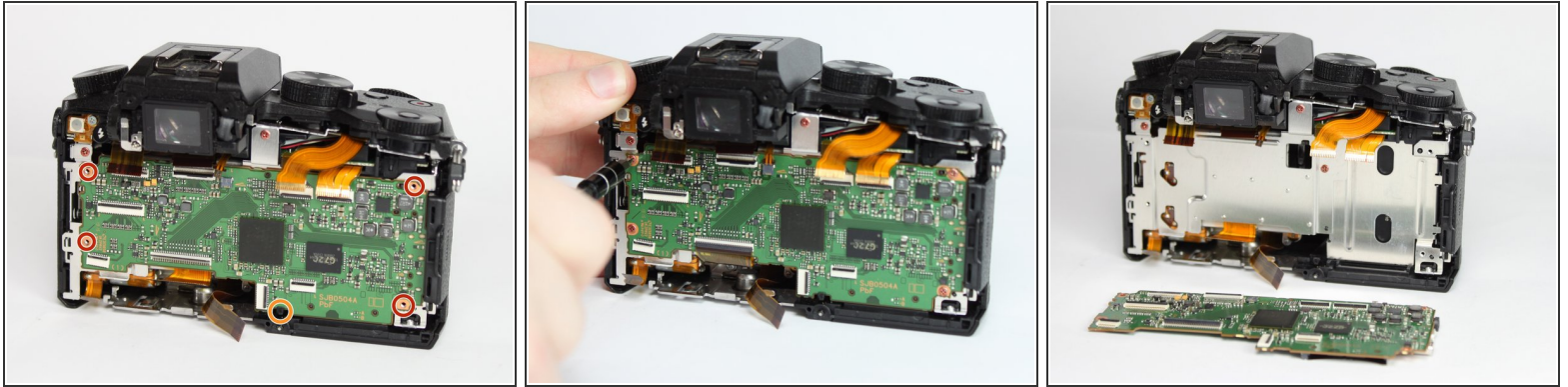
## Step 8




- Remove the 3 indicated flex cables from the bottom of the mainboard.



## Step 9



- Remove the 4 indicated red 3.0mm long screws from the corners of mainboard using a Phillips PH0 screwdriver.
  - With the eyepiece facing away from you, pull up on the main PCB from the left side and then pull it away from the chassis.
  - There is a plastic locking tab on the bottom of the camera that holds the mainboard PCB.
-  A replacement mainboard can be purchased from AliExpress [here](#)

To reassemble your device, follow these instructions in reverse order.