



Panasonic Lumix DMC-GF2 Battery Replacement

This guide will show how to get to replace the battery.

Written By: Kingsley East



INTRODUCTION

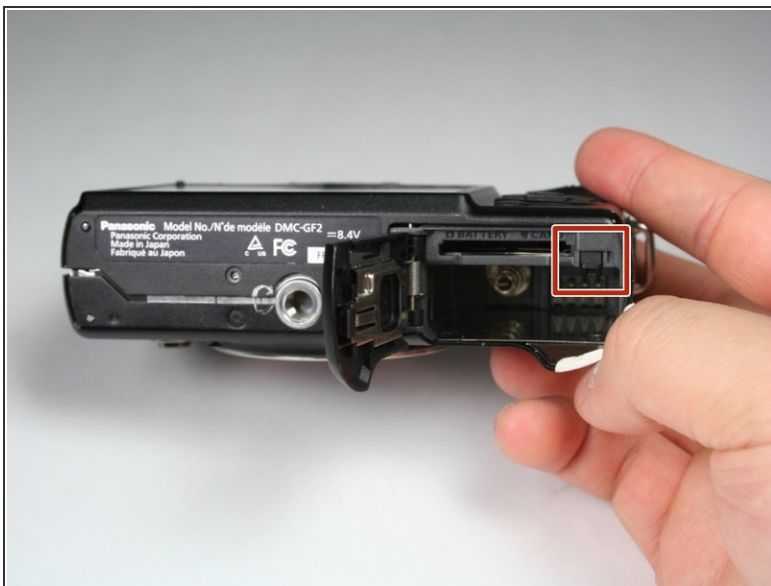
This guide is simple and quick. It requires only the use of one's hands.

Step 1 — Battery



- On the bottom of the camera, use your finger to push the lock button to the open position which will cause the hinged door to swing open.

Step 2



- Push the small black tab that holds the battery with your finger to release the battery.
- Use your fingers to pull the battery out of the camera.

To reassemble your device, follow these instructions in reverse order.