



Panasonic Lumix DMC-GF2 Front Cover Replacement

This guide shows how to remove and replace the front cover of the camera.

Written By: Nicole Gerlach



INTRODUCTION

This guide requires the use of a screw driver and close attention to which screws need to be removed.



TOOLS:

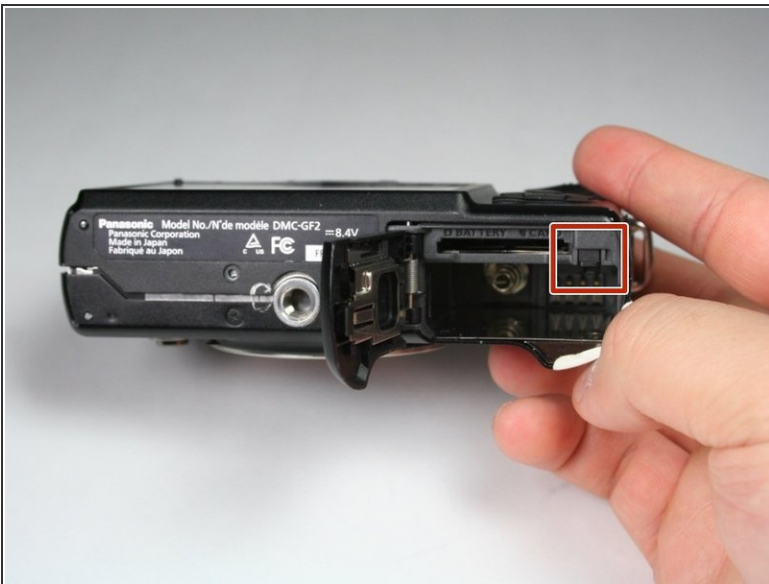
- [Phillips #00 Screwdriver](#) (1)
-

Step 1 — Battery



- On the bottom of the camera, use your finger to push the lock button to the open position which will cause the hinged door to swing open.

Step 2



- Push the small black tab that holds the battery with your finger to release the battery.
- Use your fingers to pull the battery out of the camera.

Step 3 — Front Cover



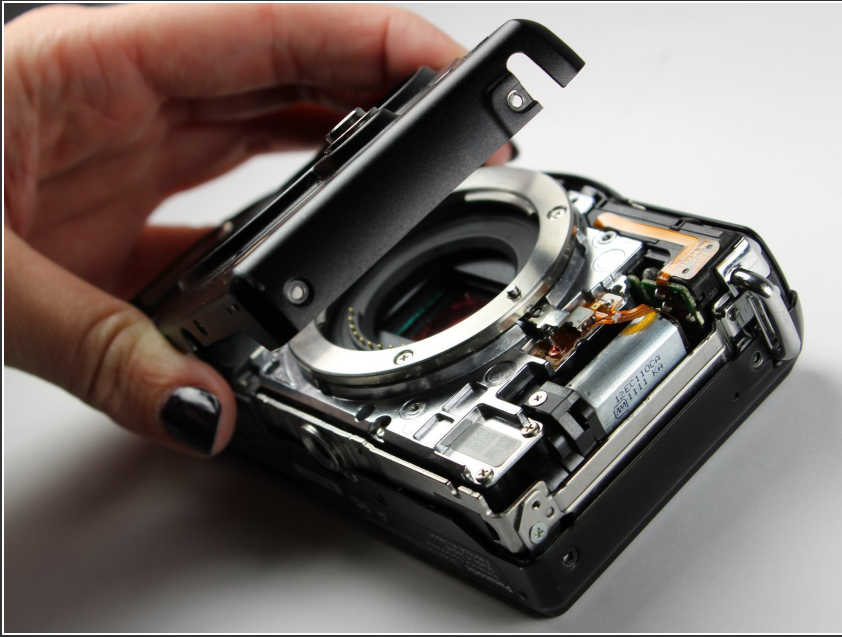
- Using a Philips #00 screwdriver, remove six 2.69 mm screws located on the two short sides and on the bottom of the camera.
- i** To loosen a screw, turn the screwdriver to the left. To tighten a screw, turn the screwdriver to the right.

Step 4



- Using a Phillips #00 screwdriver, remove four black 2.69 mm screws from the front of the camera.

Step 5



- Using your hand, gently lift up the front cover and separate it from the camera.

To reassemble your device, follow these instructions in reverse order.