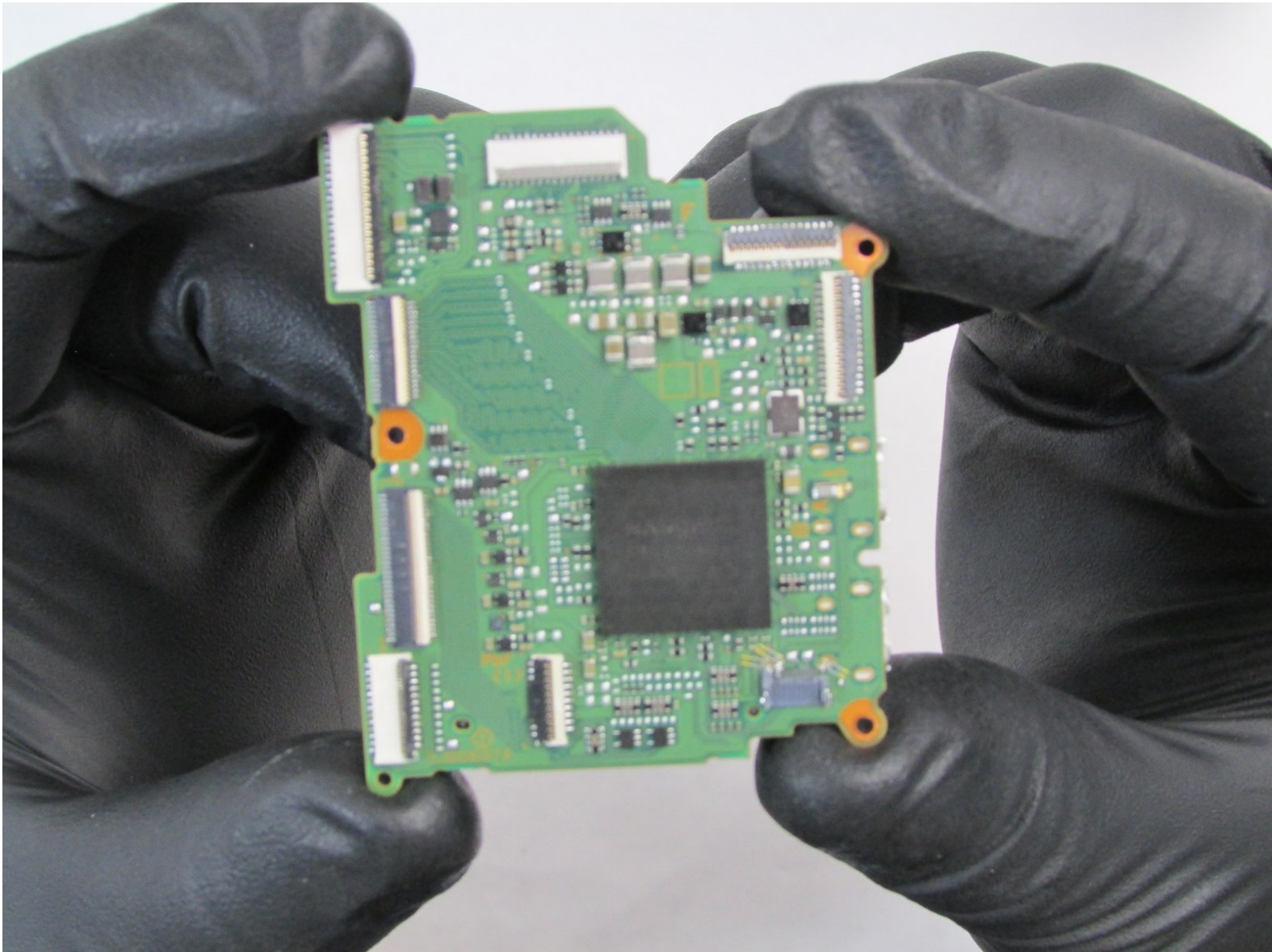




# Panasonic Lumix DMC-GX85 Main PCB Replacement

How to replace a Panasonic Lumix DMC-GX85 main PCB.

Written By: Hae Bom



## INTRODUCTION

The Main PCB is one of the most important parts of the Panasonic Lumix DMC-GX85; it cannot function properly without one. Replacing a faulty Main PCB is made easy here.



### TOOLS:

- [Phillips #0 Screwdriver](#) (1)
  - [Spudger](#) (1)
  - [J00 JIS Screwdriver](#) (1)
  - [iFixit Opening Tools](#) (1)
  - [2.5 mm Flathead Screwdriver](#) (1)
-

## Step 1 — Rear Cover



- Remove the plastic hot shoe cover by sliding it towards the rear of the camera.

## Step 2




- Using a spudger, gently lift the forward end of the shoe spring to disengage its locking mechanism.
- While holding the forward end of the shoe spring up, push from its lifted end to remove the shoe spring.

## Step 3



- Remove the two 6.0mm silver Phillips #0 screws closest to the display screen.

 Do not remove the two forward-most silver screws.



## Step 4



- Turn the camera so the side with the jack cover is facing you.
- Near the camera's top end, remove the 4.0mm black Phillips #0 screw on the bottom in this orientation.
- Open the jack cover and remove the 4.0mm black Phillips #0 screw inside.

## Step 5



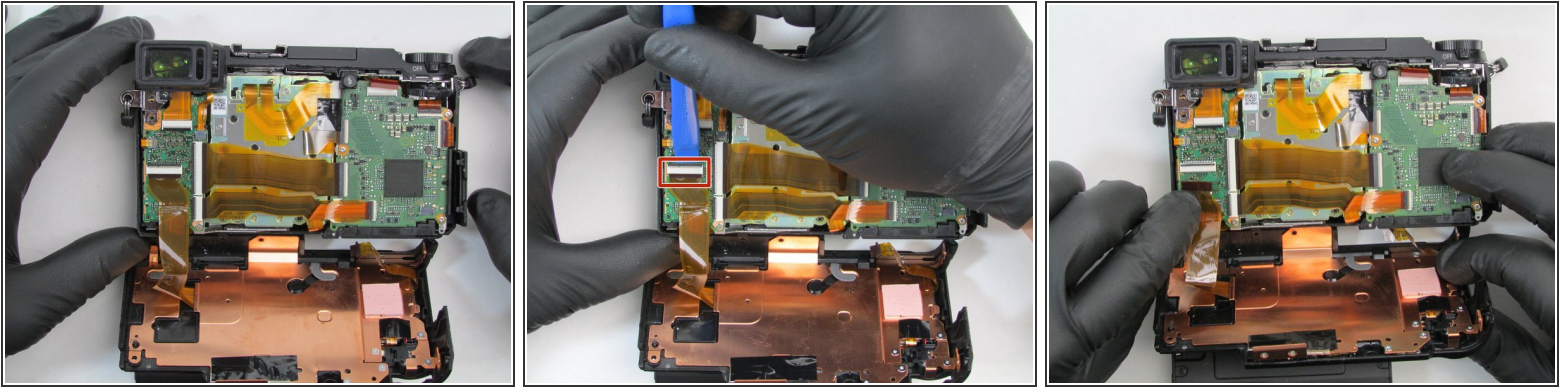
- Flip the camera upside down so the bottom of the camera is facing you.
- Remove the two center 2.5mm black Phillips #0 screws.
- Remove the outer 4.5mm black Phillips #0 screw.

## Step 6



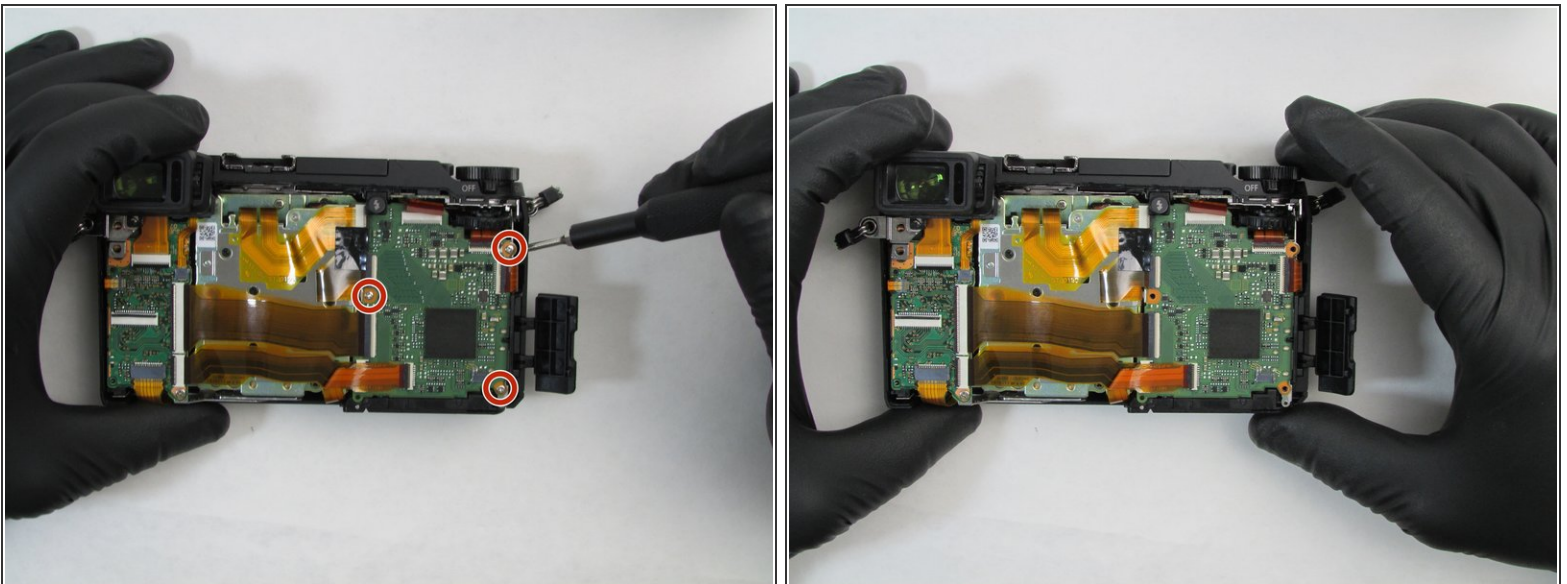
- Turn the camera so the display screen is facing you.
  - Rotate the top of the screen away from the camera body to access and remove the 4.5mm black Phillips #0 screw.
  - Remove the rear camera cover by gently pulling from the top side.
- i** When removing the rear cover, pull apart slowly to prevent damaging the ribbon cable connecting the display screen and the Sub PCB.

## Step 7



- Turn the camera so the lens is facing down with the rear cover pulled back.
  - Disconnect the ribbon cable from the camera by pulling up on the black locking tab with an iFixit opening tool.
  - Pull the ribbon cable from the connector. The rear cover is now completely detached from the camera.
- i** Do not bend the ribbon cable excessively and take care not to damage the ribbon cable.

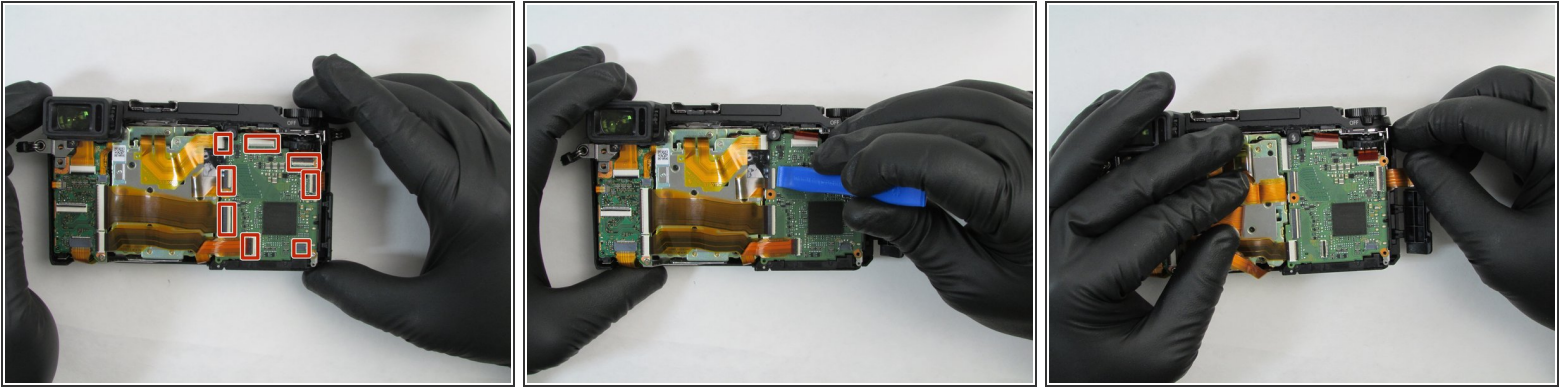
## Step 8 — Main PCB



- Remove the three 3.5mm silver Phillips #0 screws mounting the main PCB to the camera frame.

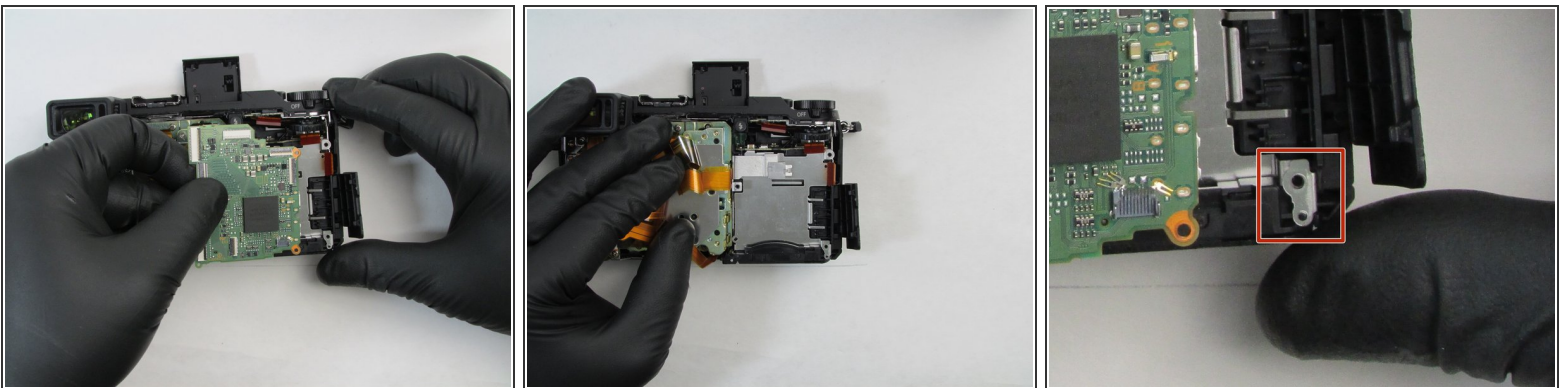


## Step 9



- Disconnect the eight ribbon cables from the main PCB by pulling up on the black locking tabs with an iFixit opening tool.
- Pull the ribbon cables from the connectors.
- ⓘ Do not bend the ribbon cable excessively and take care not to damage the ribbon cable.

## Step 10



- Gently lift the motherboard away from the camera body.
- ⓘ When removing the main PCB, take care not to lose the battery earth plate.

To reassemble your device, follow these instructions in reverse order.