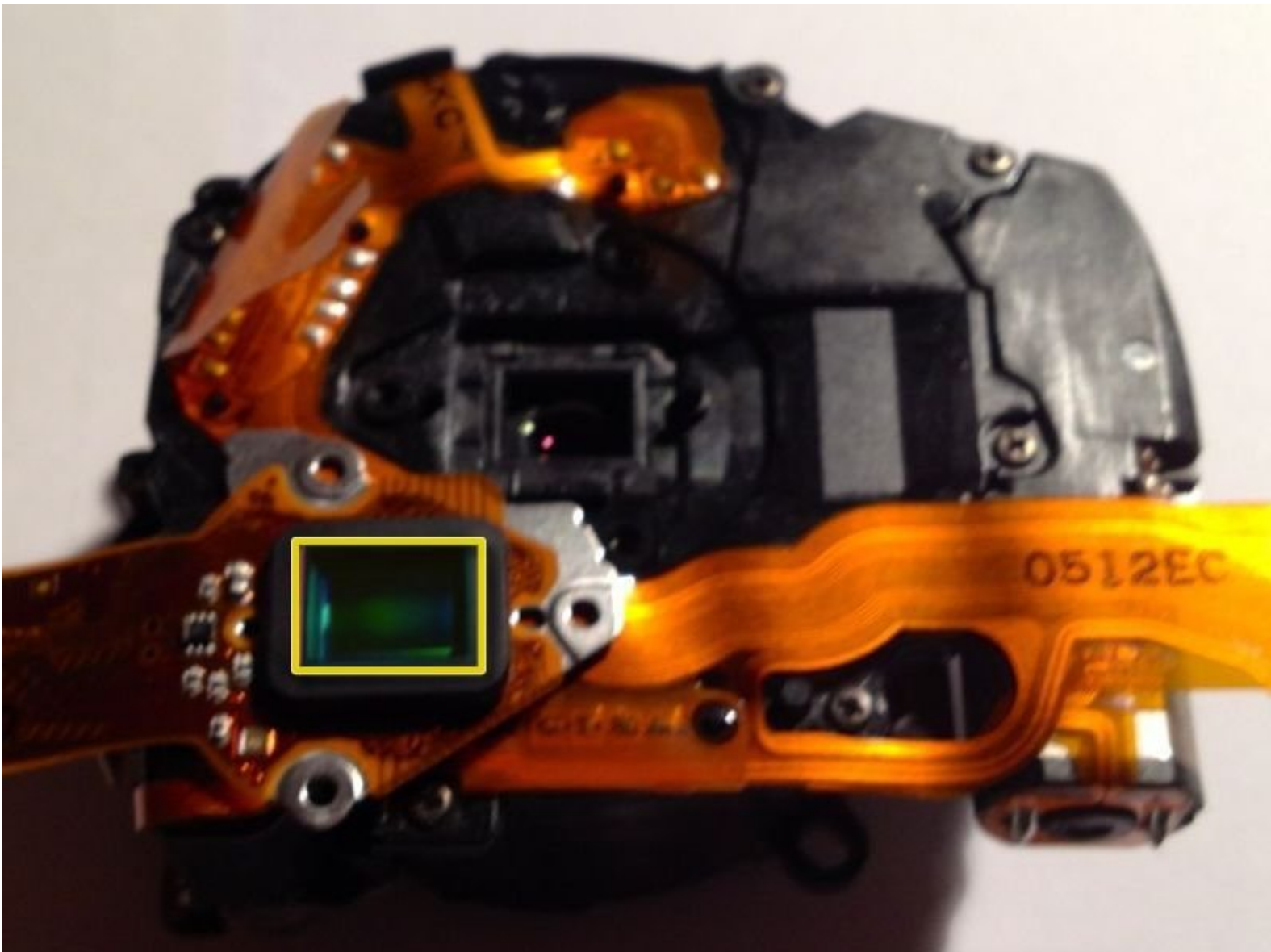




Panasonic Lumix DMC-TZ10 Image Sensor Repair

On my TZ10 I suddenly could not make any pictures any more without ghost particles visible. And even worse, those somehow affected the cameras ability to focus.

Written By: BjoernErik



INTRODUCTION

I decided to open her up and see it can be repaired - and it could!

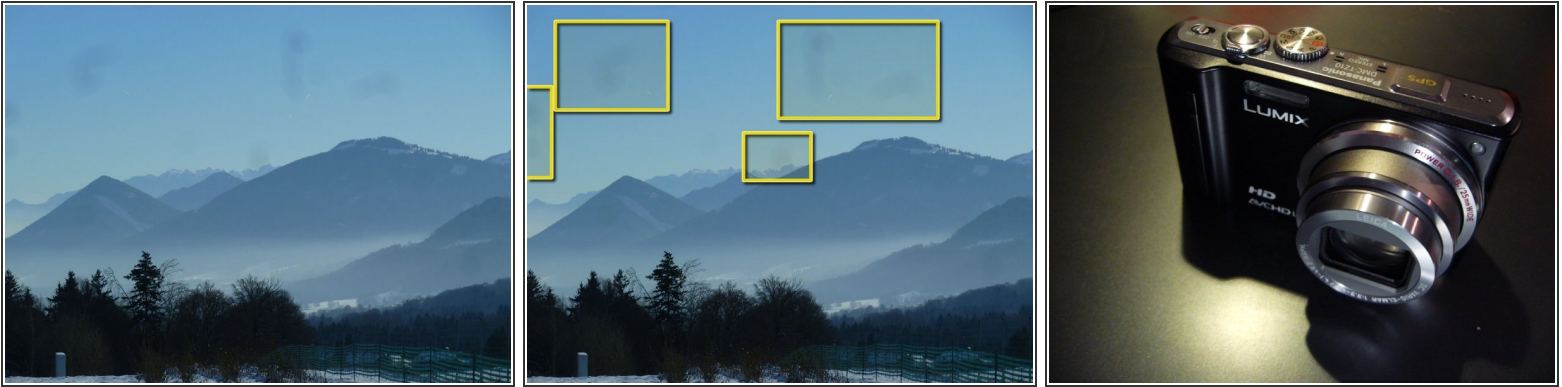
Apparently this guide also works for a similar camera, the Lumix Panasonic DMC-ZS10, with the exception that in Step 3 there are 4 extra screws to remove, two on each end.

TOOLS:

- [8" Needle Nose Plier](#) (1)
- [Phillips #0 Screwdriver](#) (1)
- [Flathead 3/32" or 2.5 mm Screwdriver](#) (1)
- [Soft Cloth](#) (1)

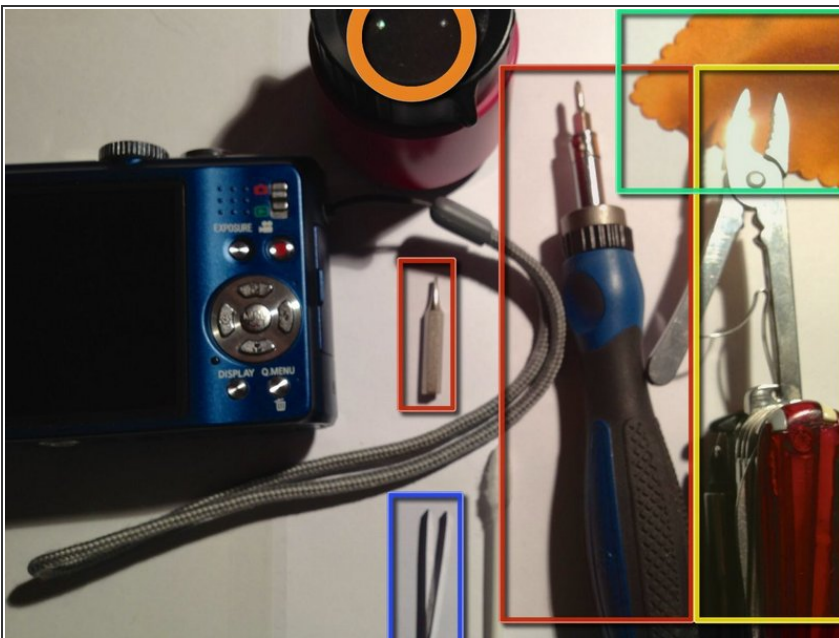
or Q-Tips or Lint-free cloth

Step 1 — This shows the problem



- One can clearly see the dust reproduced on the image

Step 2 — Tools I used



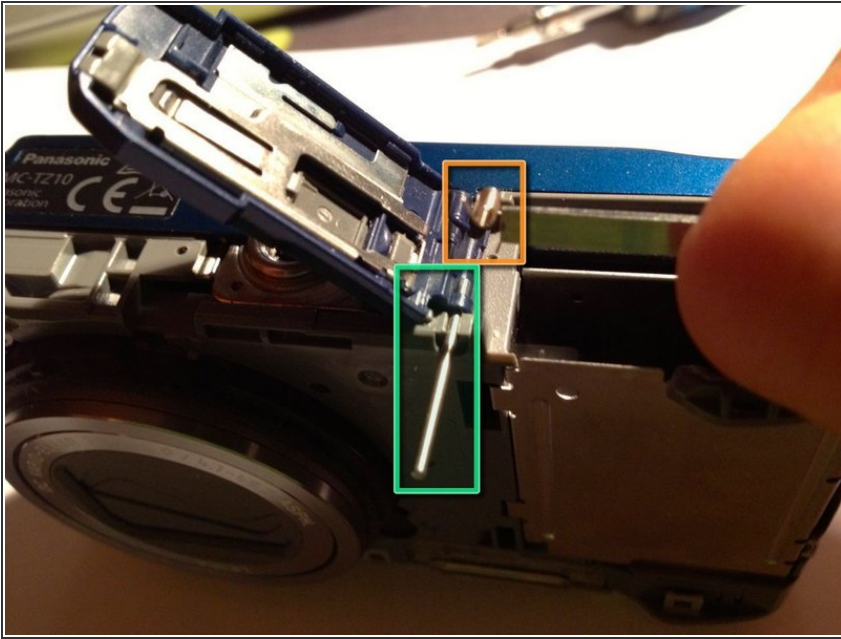
- Magnifying Glas
- Electronics Screwdriver set
- Cloth and Q-Tips
- tweezers
- My Swiss-Army Knife :-)
- TIP! have a sheet of letter paper to put the parts on as you remove them. You can keep them in removal order so it's easy to reverse the sequence on reassembly.

Step 3 — Front panel removal



- Remove Bottom screws
 - 3 visible in the picture
 - 2 off screen
 - Only for the DMC-ZS10: there are 4 extra screws to remove, two on each end.
- Remove front panel

Step 4 — Battery Cover



ⓘ This Step is optional and provided simply for better handling.

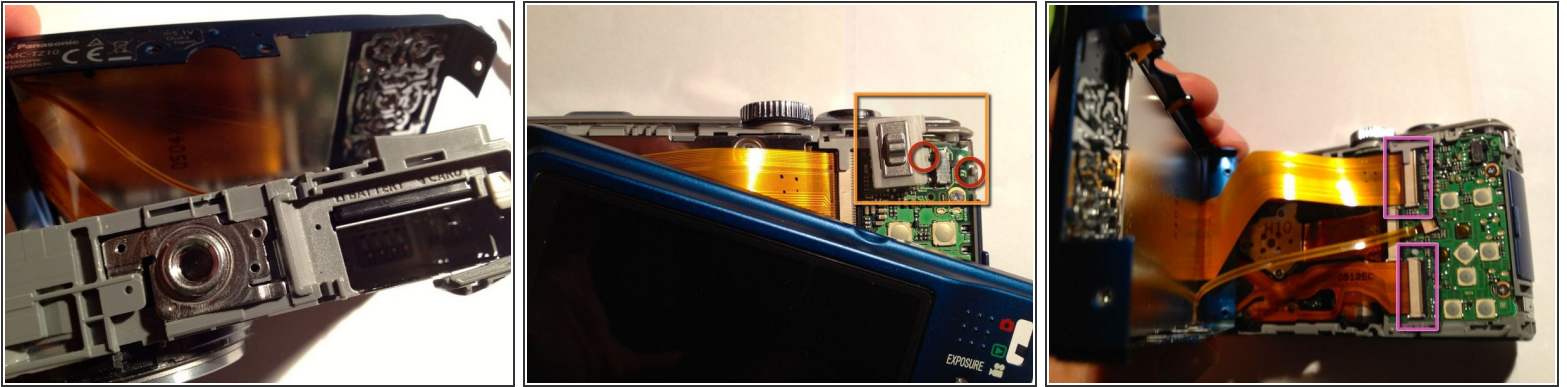
- slide pin to side
- use small pliers to pull or pin to push

● Caution

⚠ Don't lose the spring!

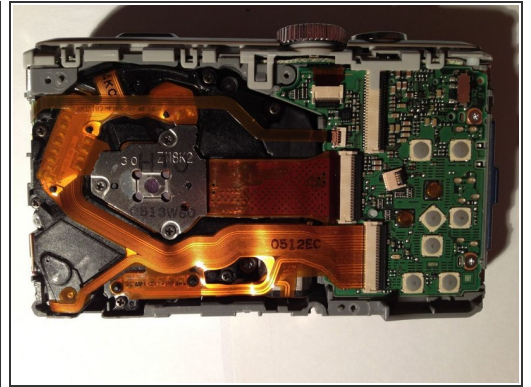
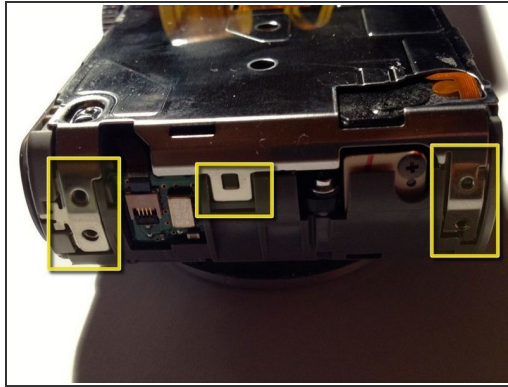
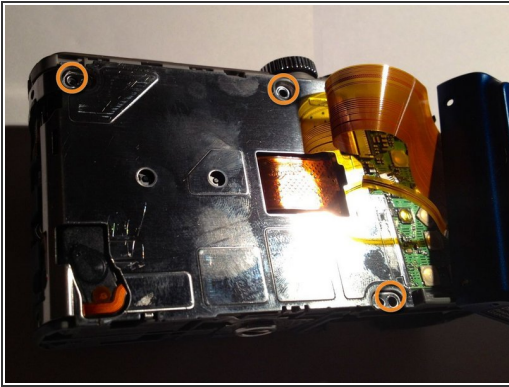
- remove cover

Step 5 — Lift back cover



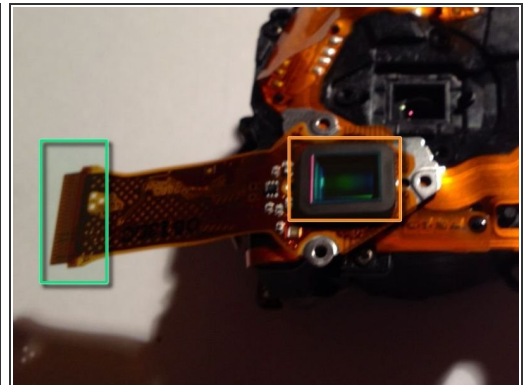
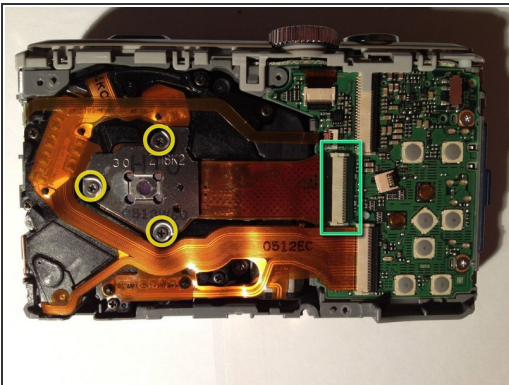
- Carefully lift the cover slightly upwards
- Remove the switch
 - ❗ It's only secured with a clip at one side and might fall off during handling, if not removed now. However, this step is - optional-
- Lift sideways and remove the two PCB connectors
 - Best use your fingernail or a soft plastic spudger to gently flip the black plastic on the side of the connector to the right until it flips over
 - Then gently pull the PCB to the left outwards without damaging it or bending it too sharply
- Remove back cover completely

Step 6 — Remove protective metal cover



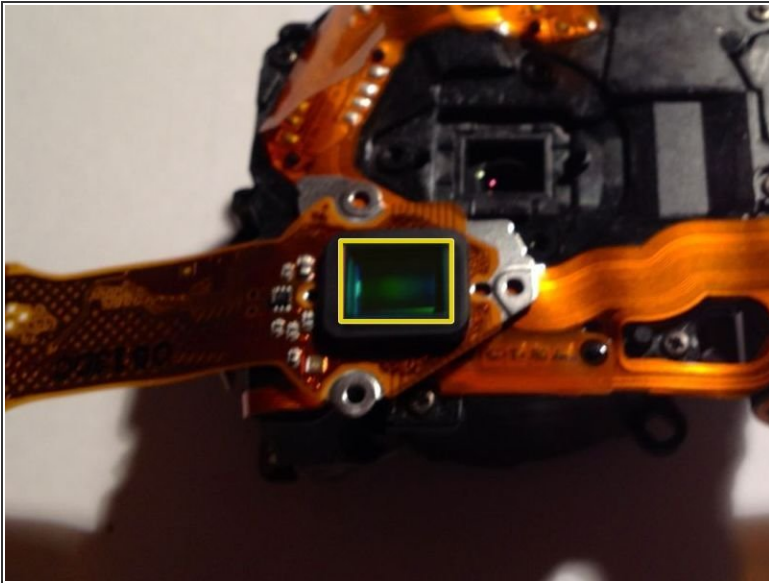
- Remove screws
- Lift metal clamps gently
- Remove metal cover

Step 7 — Remove Imaging Chip



- Remove screws holding the Chip assembly
 - Remove PCB Connector (optional) or simply and carefully flip the assembly over
 - Now the Chip with its protective cover is accessible
- i** Note: The last two images show the whole imaging subassembly removed - this is NOT required if you only want to access the chip

Step 8 — Clean the protective cover



- Clean the protective cover (without any cleaning fluid so to not leave residue on the glass)
 - Use a Q-Tip or a lint-free cloth like for glasses and check with the magnifier for success
- ⚠ This is a delicate procedure that requires much care and a dust free environment

To reassemble your device, follow these instructions in reverse order.