



Panasonic Lumix DMC-TZ35 LCD Replacement

This guide will show you how to disassemble the Panasonic Lumix DMC-TZ35 camera in order to replace the LCD.

Written By: Philip Le Riche



INTRODUCTION

This is a fairly simple camera to take apart, just requiring a little care and patience. Most major components are very straightforward to replace and other components can be accessed quite easily too.

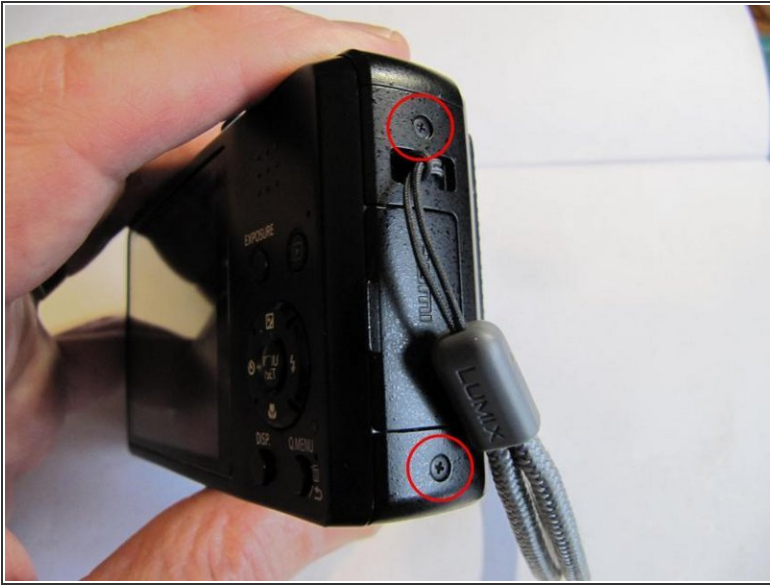
You will need a small cross-head screwdriver, and if you need to remove the sensor this will require a Torx screwdriver. A plastic spudger or opening tool is also useful to have.



TOOLS:

- [Essential Electronics Toolkit](#) (1)
-

Step 1 — Removing the back - 1



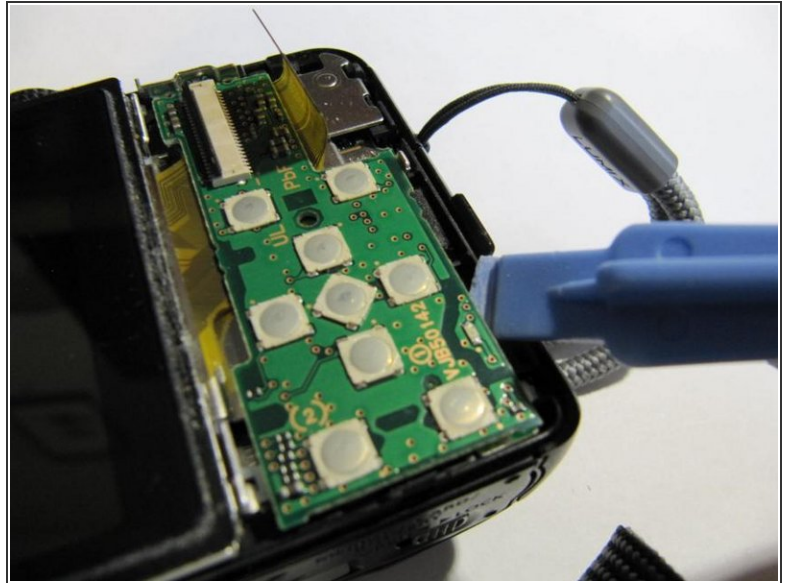
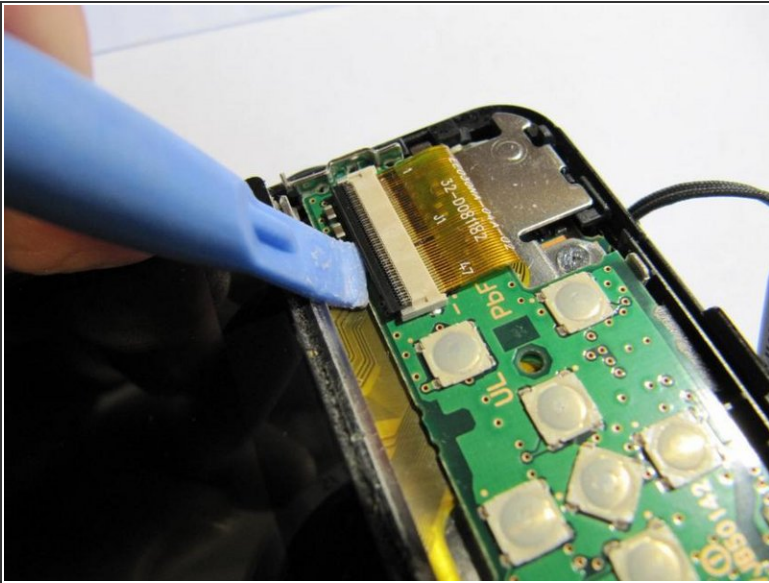
- Remove 2 screws on the right hand side of the case.
- Remove 2 screws on the left hand side of the case.

Step 2 — Removing the back - 2



- Remove 2 screws on the bottom of the case, adjacent to the tripod mount. Note that these screws are slightly shorter than the previous ones and so should be kept separate.
- Ease off the case back. You can help it off by inserting a spudger in the crack on all sides to ease it, especially either side of any points where it seems reluctant to come.

Step 3 — Removing the buttons board



- Gently lift the locking bar on the LCD ribbon, then ease the ribbon out of the socket.
- Lift the buttons board by inserting a spudger under the bottom right hand edge. This will detach it from a connector beneath.

Step 4 — Removing the LCD



- Release a clip on the left hand side of the LCD and hence lift the LCD out.

To reassemble your device, follow these instructions in reverse order.