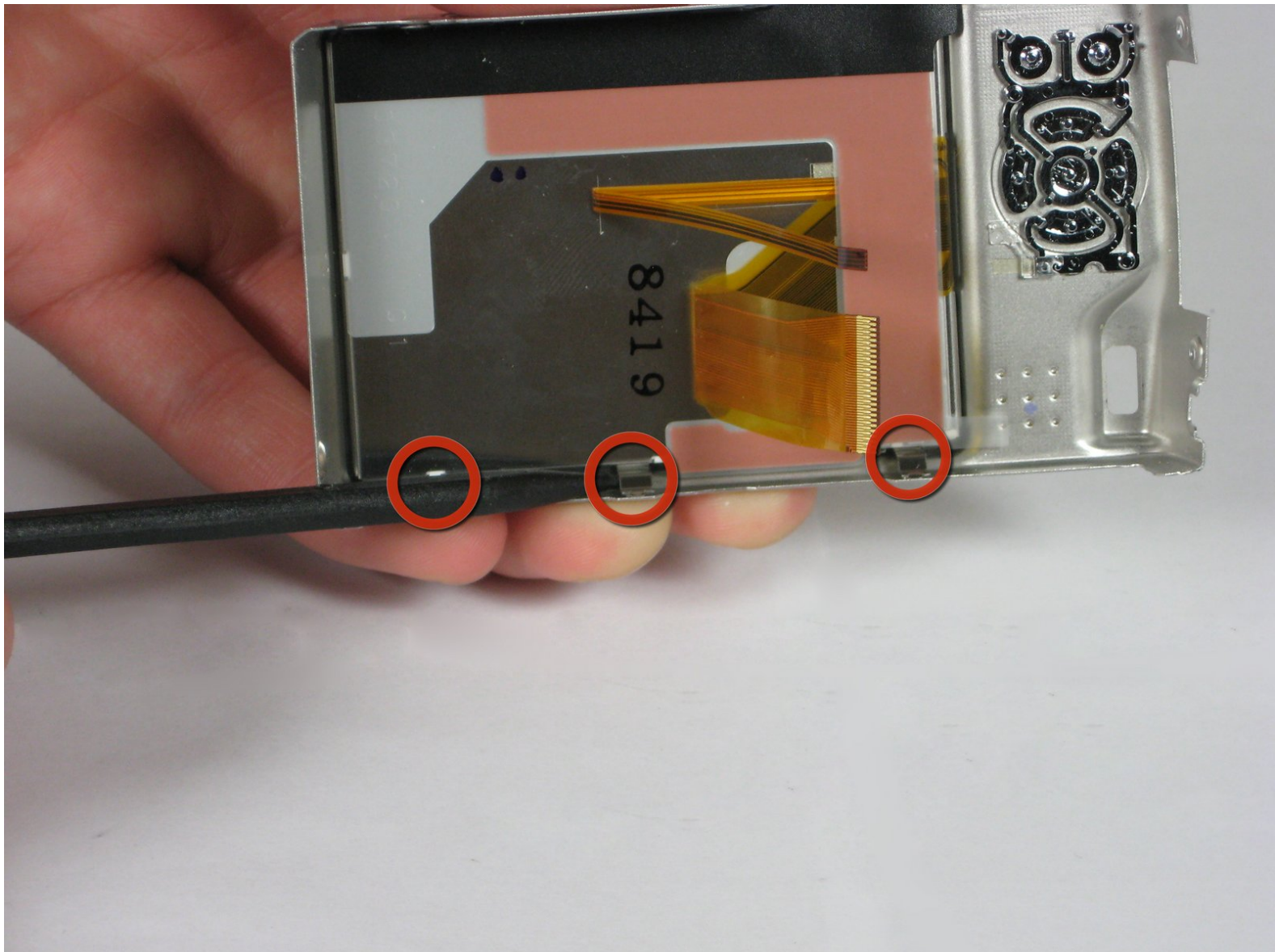




Panasonic Lumix DMC-TZ5 lcd screen replacement

Easily replace a broken LCD display with this easy to follow guide

Written By: Ben Canfield





TOOLS:

- [Phillips #00 Screwdriver](#) (1)
 - [Spudger](#) (1)
-

Step 1 — Back Cover



- Remove the battery and memory card from the device.

Step 2



- Remove 4 screws from the right side of the camera.
 - There are two 3.4mm screws at the top.
 - There are two 2.2mm screws at the bottom.

Step 3



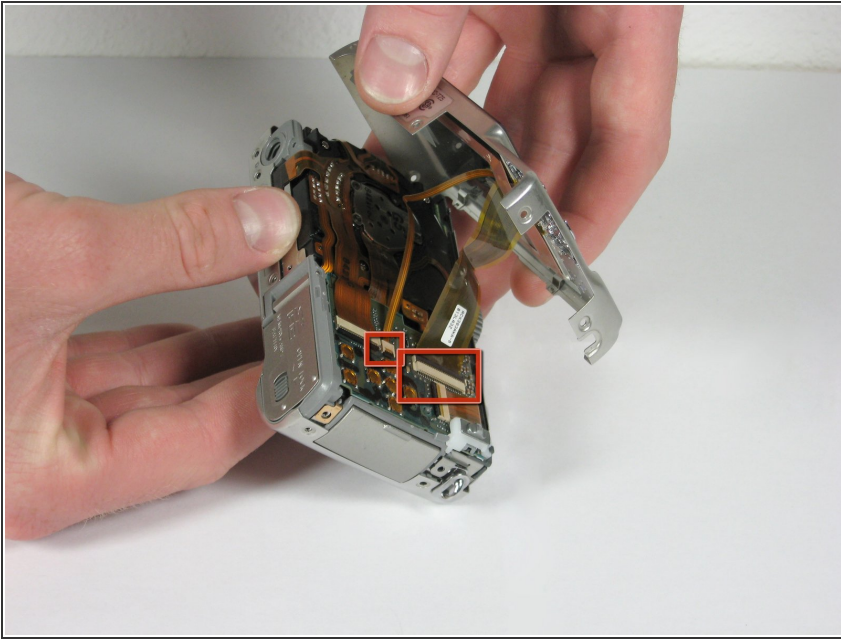
- Remove the single 3.4mm screw on the left side of the camera.

Step 4



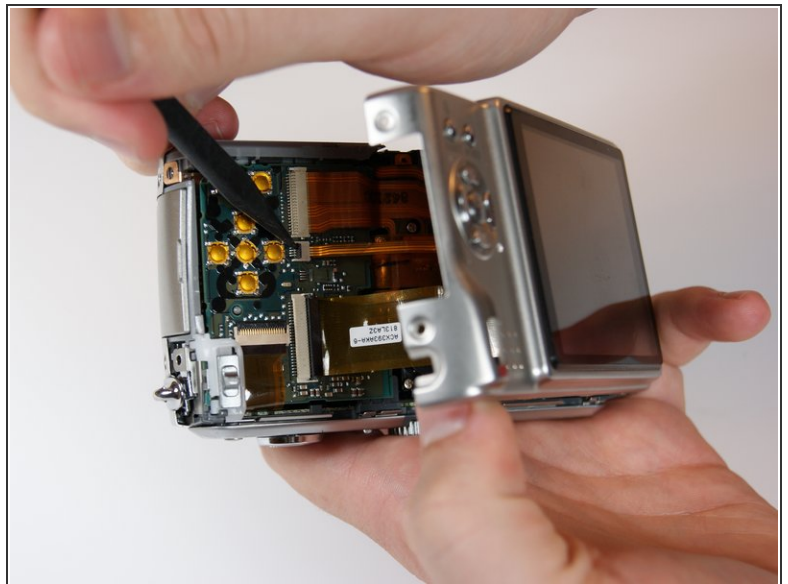
- Remove 5 screws from the base of the camera.
 - There are two 2.2mm screws next to the battery compartment.
 - There are three 4mm screws around the tripod mount.

Step 5



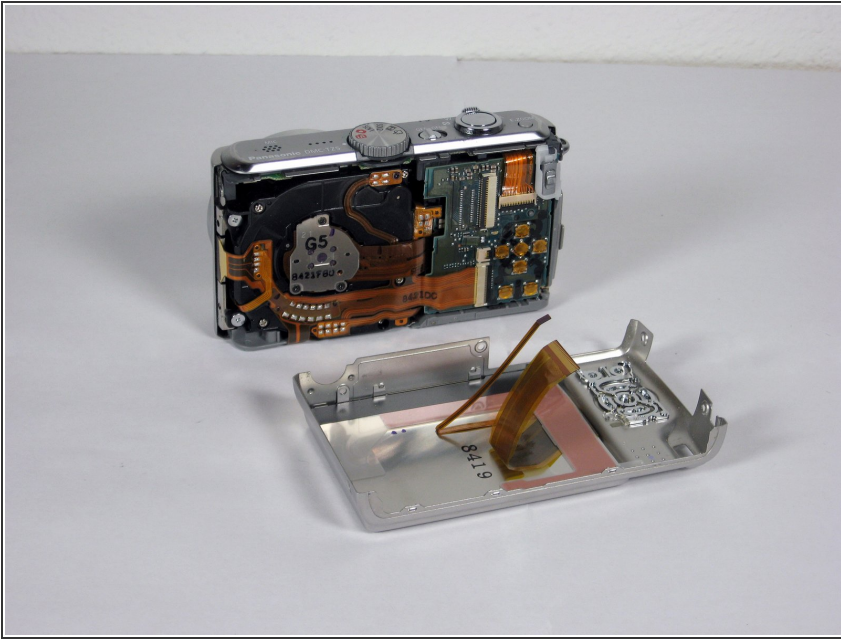
- Slowly slide the back cover away from the device
- ⚠ The back casing is held in place by two ribbon cables. Do not pull the back cover too far from the camera.

Step 6



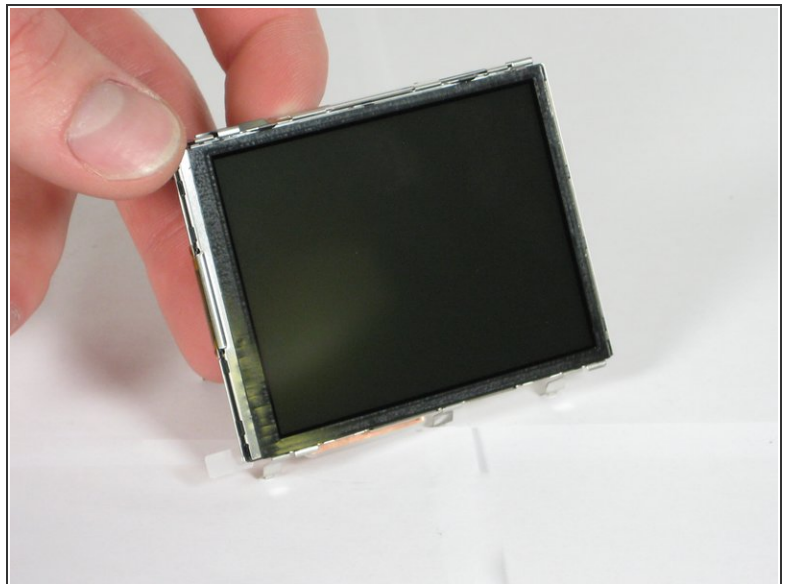
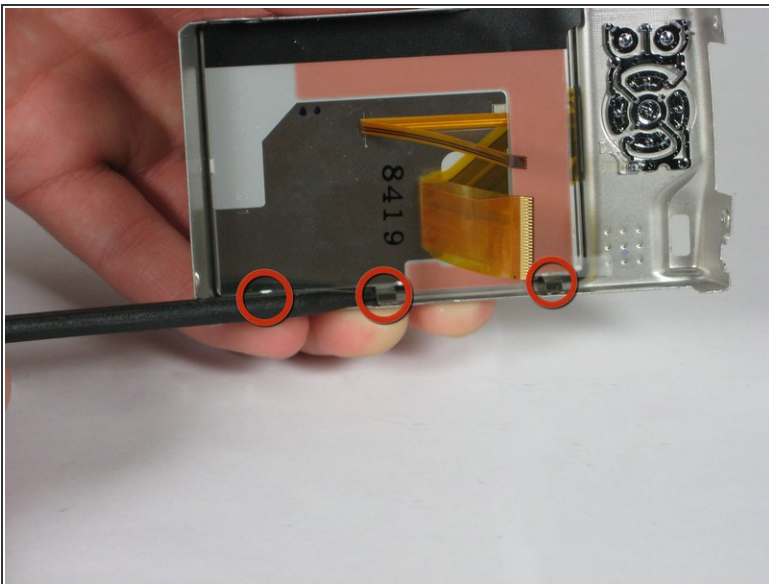
- Detach both ribbon cables using a spudger.
- Use the tip of the spudger to lift the black clip upward, unlocking the ribbon cable.

Step 7



- Remove the back casing from the camera.

Step 8 — LCD



- Use a spudger to release the 3 clips between the LCD case and housing.
 - Put the tip of the spudger in the gap between the clip and housing, then lift up gently to unclip.
- Gently lift the LCD from the case, making sure none of the 3 clips reattach.

To reassemble your device, follow these instructions in reverse order.