



Panasonic Lumix DMC-ZS1 Door Replacement

Step by step guide to replacing your digital camera door.

Written By: Sales Cameraparts4you



INTRODUCTION

Step by step guide to replacing your digital camera door.



TOOLS:

- [Essential Electronics Toolkit](#) (1)



PARTS:

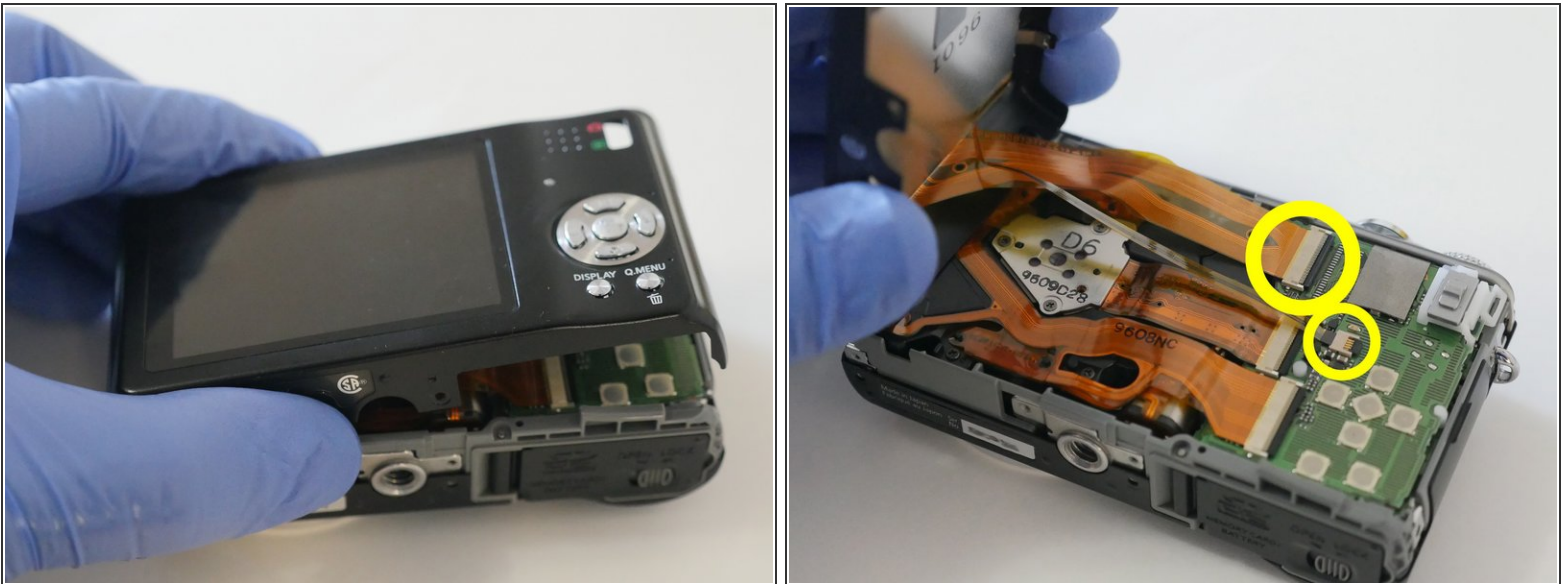
- [DMC-ZS1 LCD Display Part VYK3D81](#)
(1)

Step 1 — Exterior Screw removal



- Remove the battery and memory card from the unit
- Remove 6 (0.3mm) screws from the sides of the unit
- Remove 5 (0.3mm) screws from the bottom of the unit

Step 2

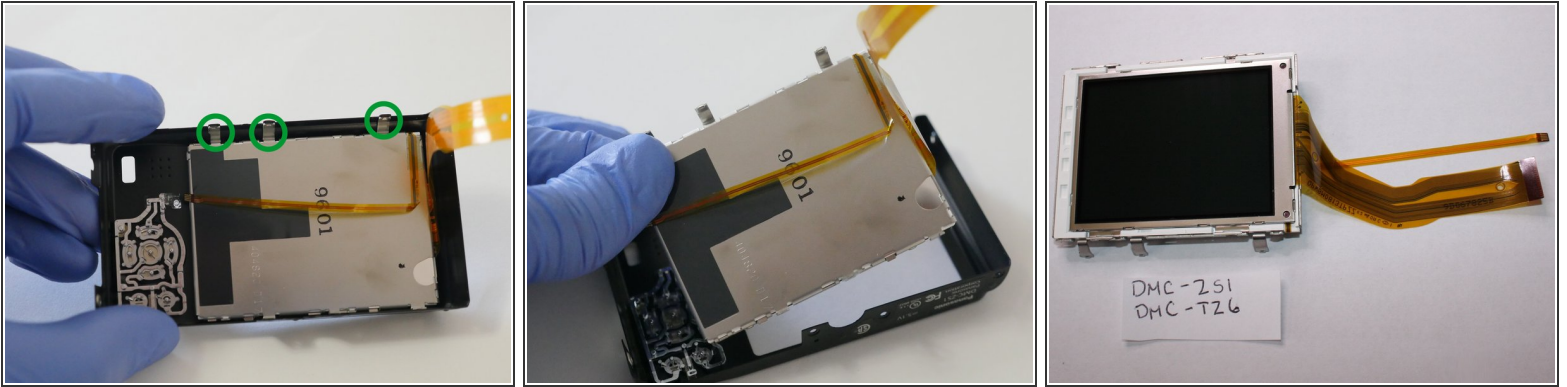


- Lift up slightly the rear cover.

⚠ Do not remove rear cover yet. It is still attached to the Main PCB.

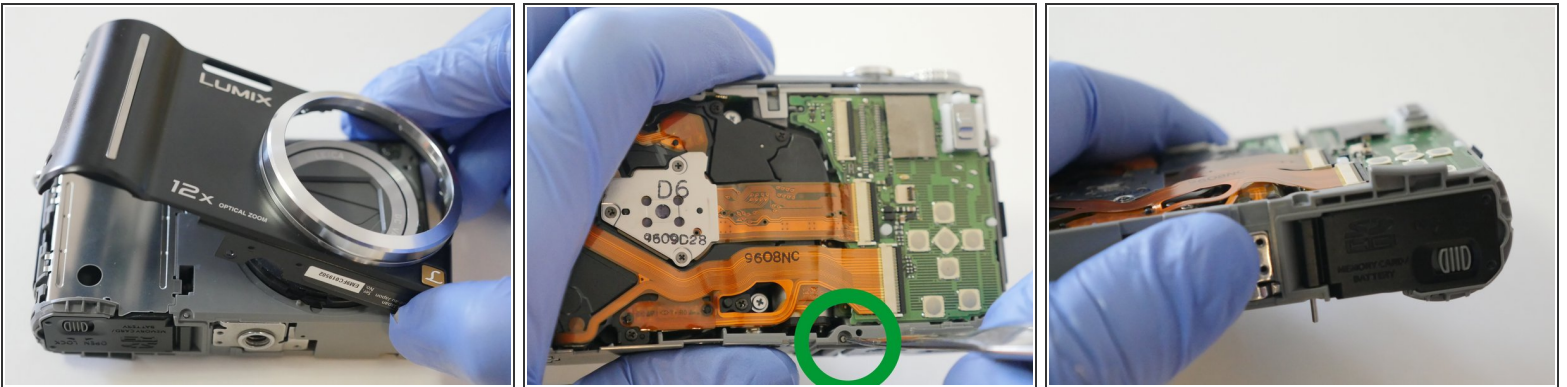
- Flip up the cable clamps using a spudger or other device. Careful not to break the clamps. Release flex cables and remove back cover.

Step 3



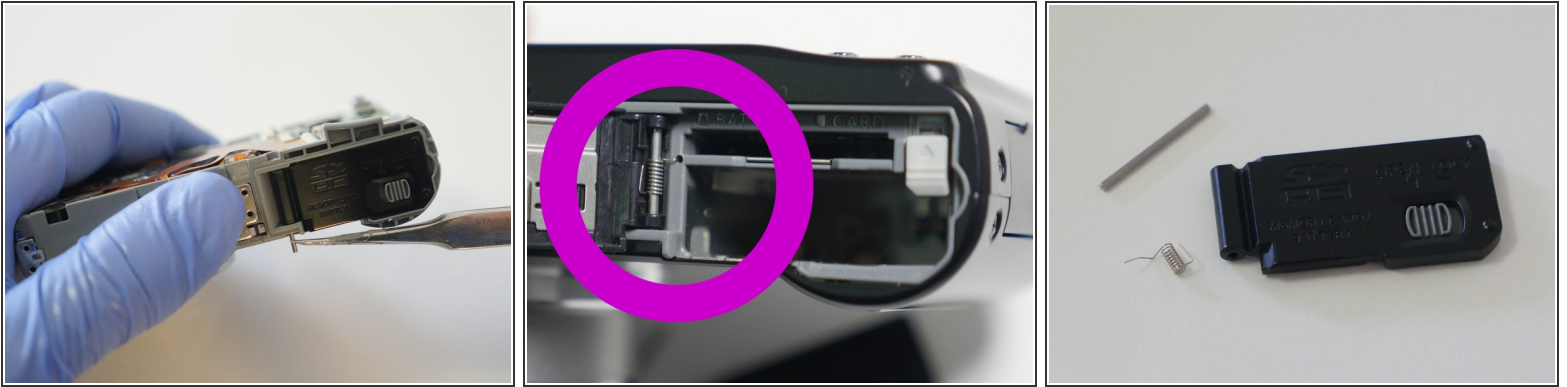
- Release the 3 metal clips from the rear cover and remove the LCD

Step 4 — Door



- Complete the following review guide: LCD removal
- Remove the front cover
- Use tweezers or a thin object to push door pin thru enough to grab from the other side.
- ⓘ Keep door closed during this procedure so you will not loose the spring.

Step 5



- ❗ Try to keep the door closed during this procedure.
 - Pull out door pin using needle nose pliers or other tool.
 - Notice spring positioning. This will help you re-install your replacement door
- ❗ If you are having trouble installing, try to keep the spring in place by using a small piece of tape.
 - [Replacement Door](#)

To reassemble your device, follow these instructions in reverse order.