



# Panasonic Lumix DMC-ZS19 Menu/Set Button Replacement

This guide will quickly show you how to replace a button for your menu/set button.

Written By: Willard Scott



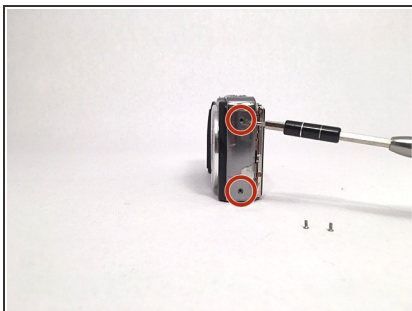
**TOOLS:**

- [Phillips #00 Screwdriver](#) (1)

**PARTS:**

- [Replacement Button](#) (1)

## Step 1 — Menu/Set Button



- Start by removing the screws located on the left and right hand side panels of the camera (two sets of pairs of screws). Next remove the pair of screws on the bottom of the camera. (6 in total)

## Step 2



- Gently remove the loosened panel from the LCD screen.

## Step 3



- Carefully use a finger to pop out the Menu/Set button from the panel by pushing on it.

To reassemble your device, follow these instructions in reverse order.