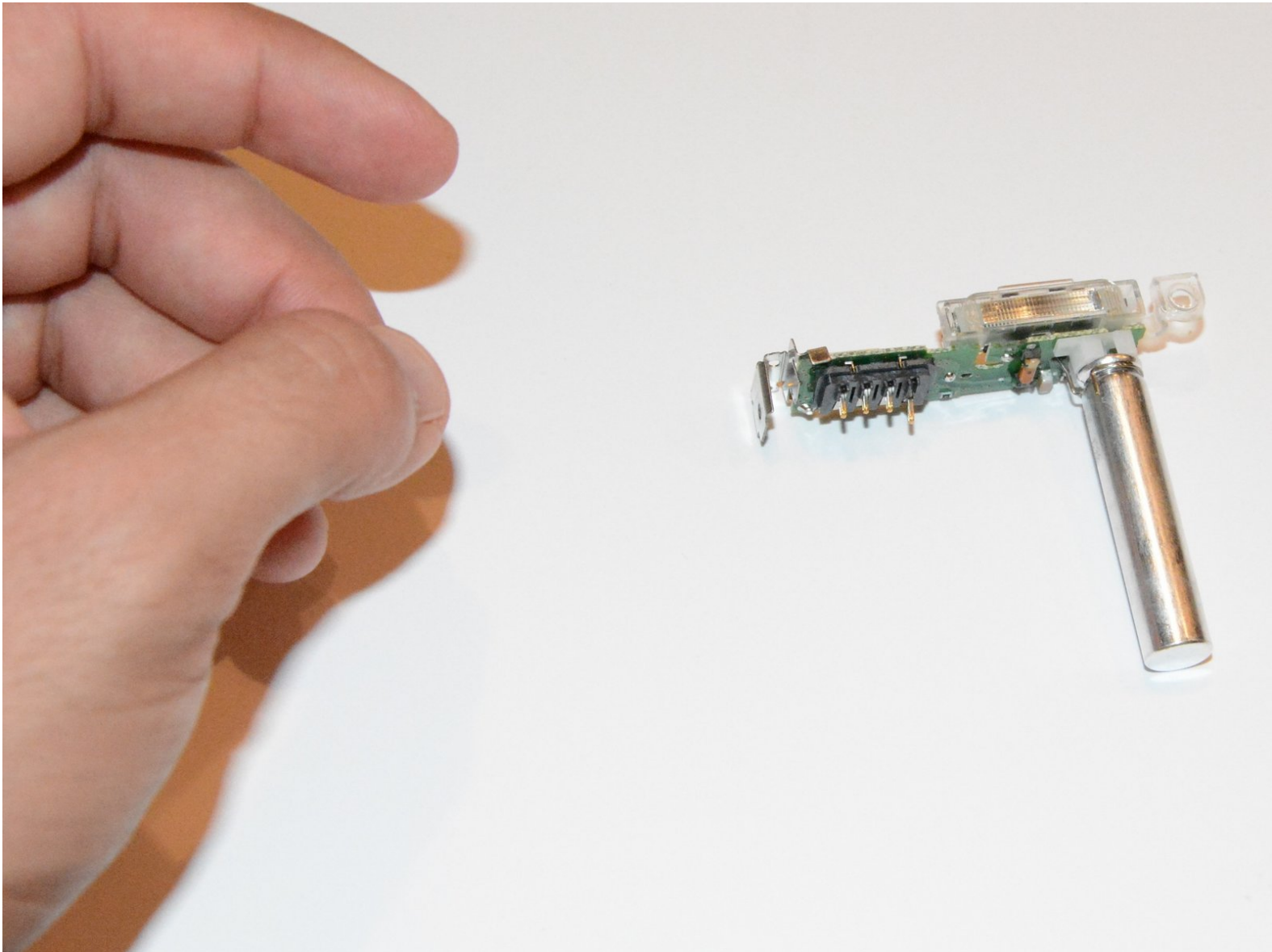




Panasonic Lumix DMC-ZS25 Flash Replacement

After looking at these steps, you will be easily able to replace your camera's flash.

Written By: Abbas Khan



INTRODUCTION

Use this guide to replace the flash on a Panasonic Lumix DMC-ZS25 camera.



TOOLS:

- [iFixit Opening Tools](#) (1)
 - [Heavy-Duty Spudger](#) (1)
 - [64 Bit Driver Kit](#) (1)
-

Step 1 — Flash



- Using a small screwdriver, remove the four 3.4mm screws from the right and left sides of your Panasonic Lumix Camera.

Step 2



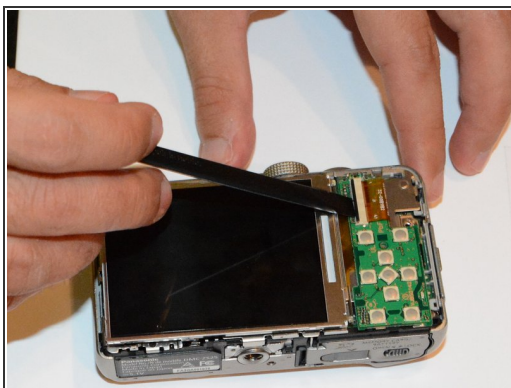
- Using a small screwdriver, remove the two 2.6mm screws located next to the battery, on the outer casing.

Step 3



- Using the plastic opening tool, open the outer cover of your device.
- ⓘ The easiest way to open your device is by placing the tool in the HDMI port.

Step 4



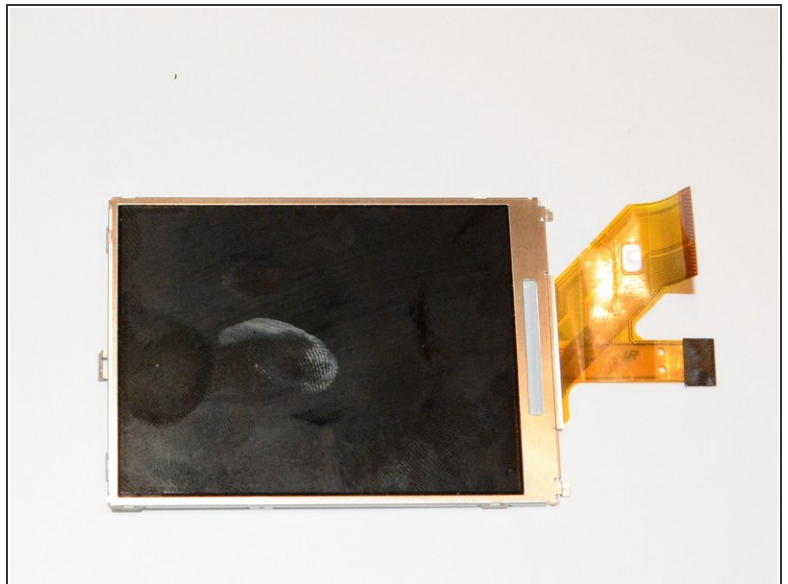
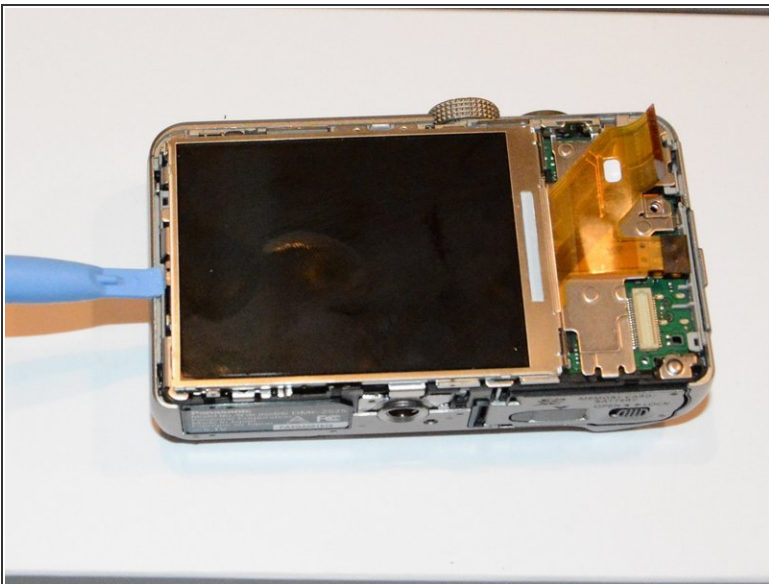
- Using the spudger, pull upward on the screen cable to release it.

Step 5



- Using the plastic opening tool, lift the button board until it clicks.

Step 6



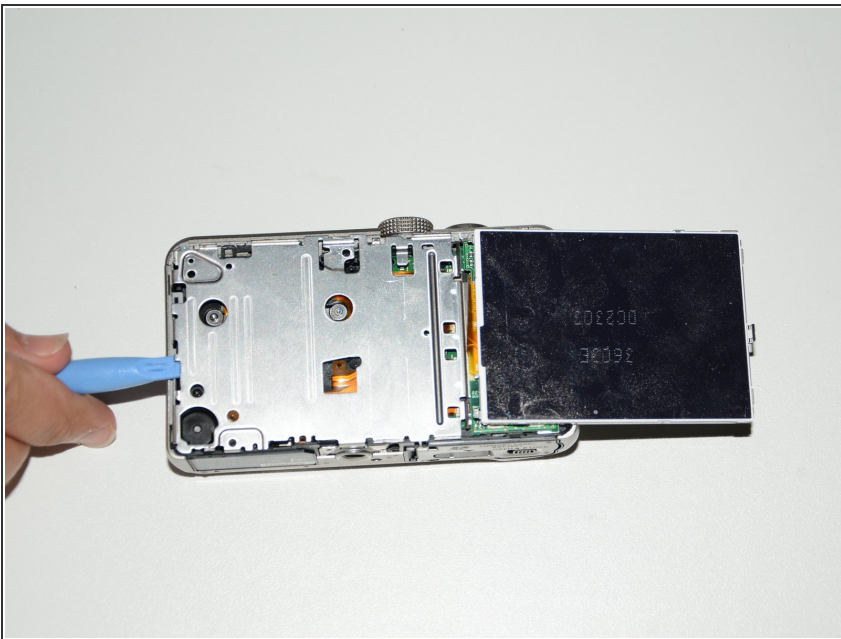
- Using the plastic opening tool, lift the screen until it clicks.

Step 7



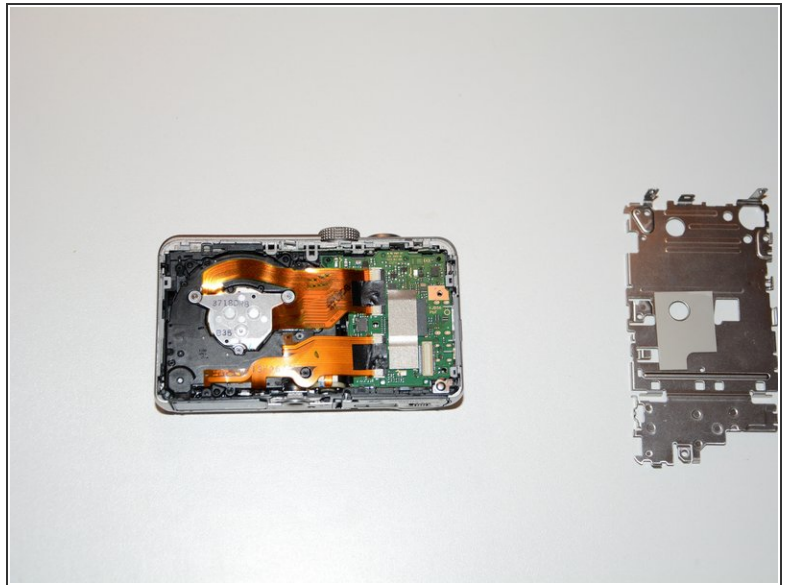
- Using a small screwdriver, remove the two 4.2mm screws located on the corner of the inner cover, under the screen.

Step 8



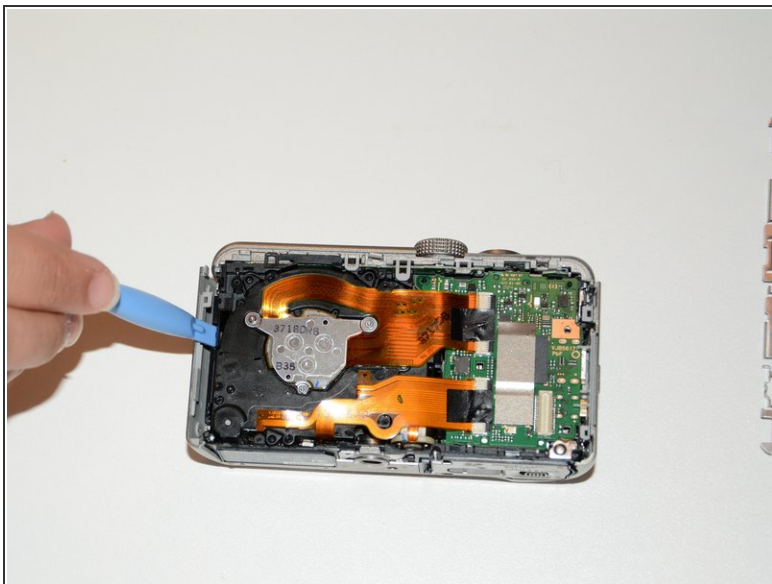
- Using the plastic opening tool, remove the inner cover.

Step 9



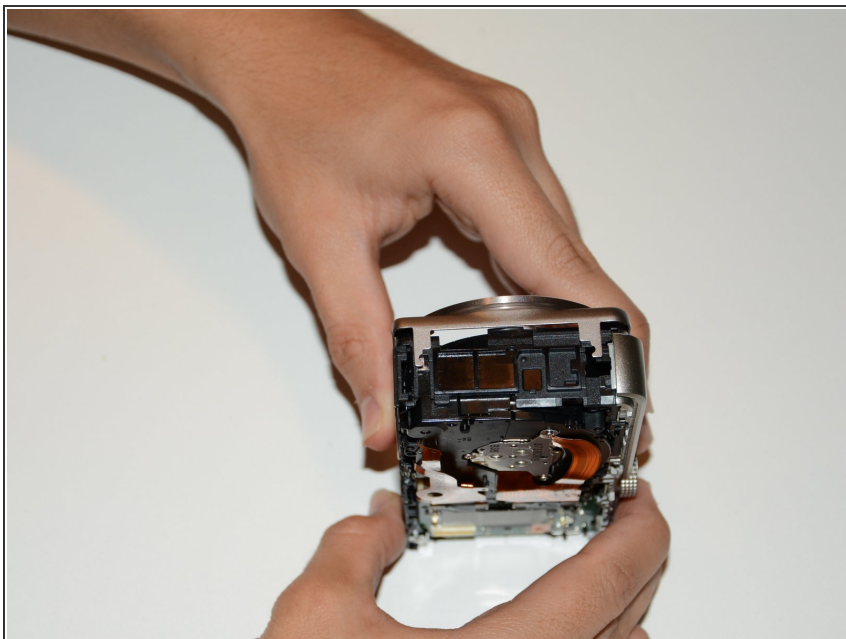
- Using your hands or the opening tool, separate the device into two pieces, as shown.

Step 10



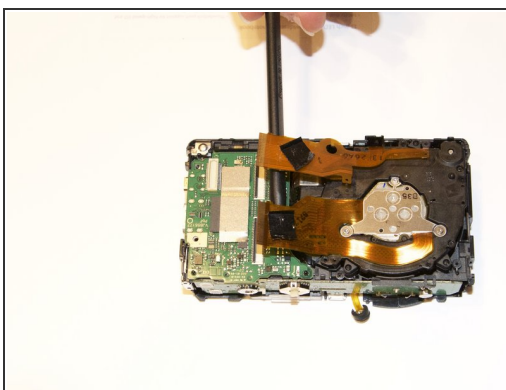
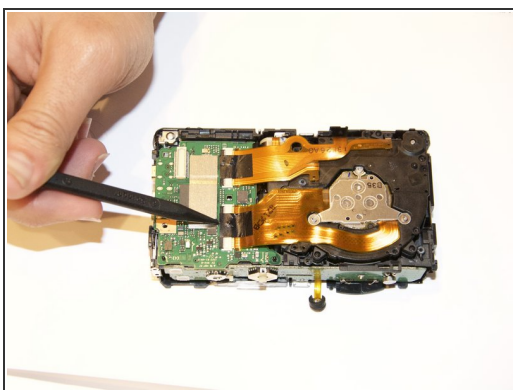
- Using the spudger, remove the black side cover.

Step 11



- Using your hands, remove the front cover.

Step 12



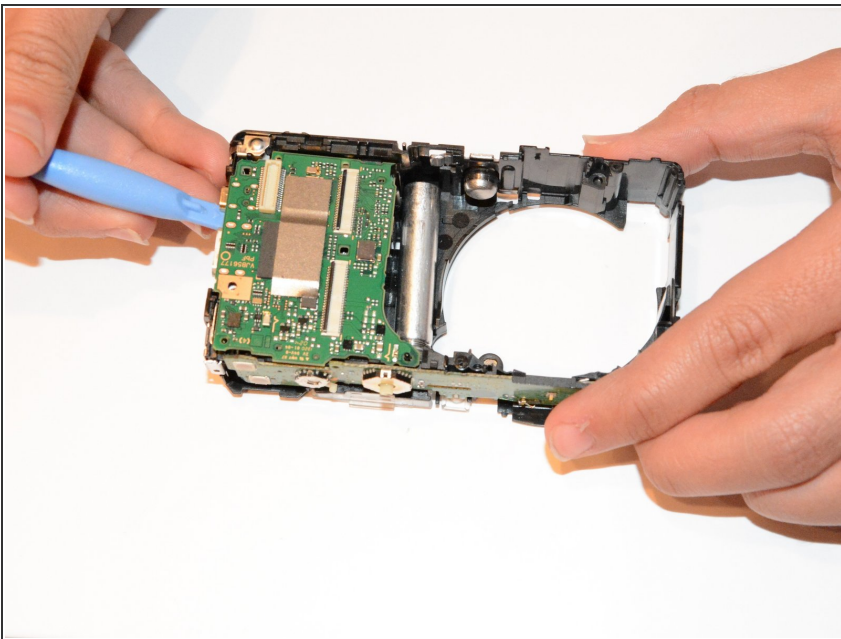
- Using the spudger, unlock the screen cables from the circuit board.
- Lift up the black clip to release the cables.

Step 13



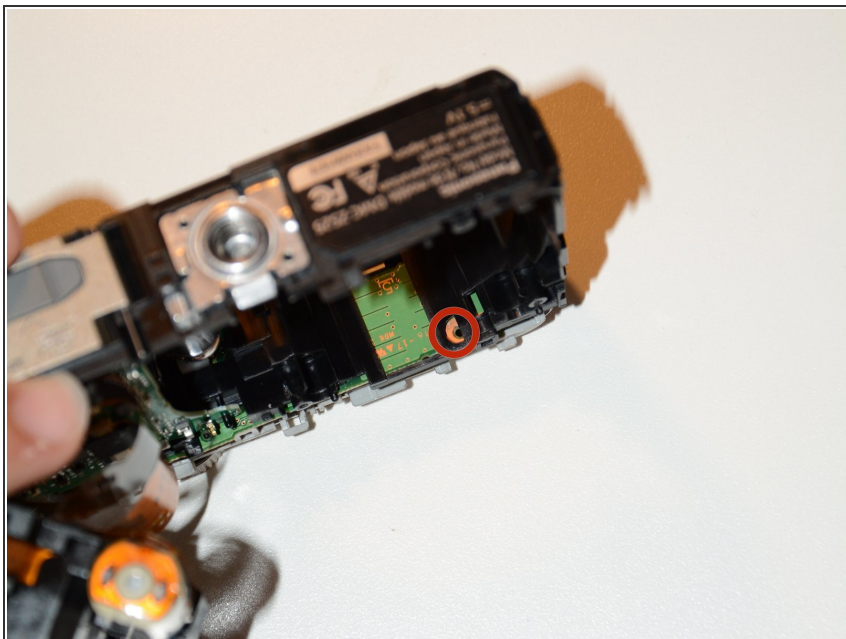
- Using your hands, remove the lens.

Step 14



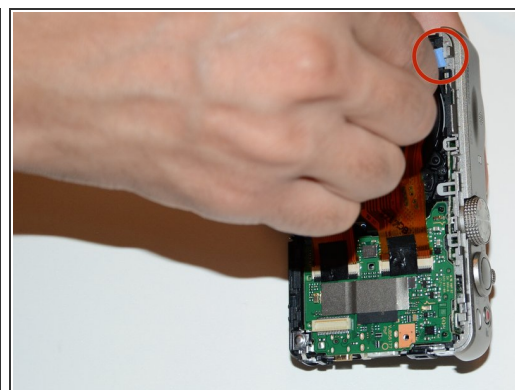
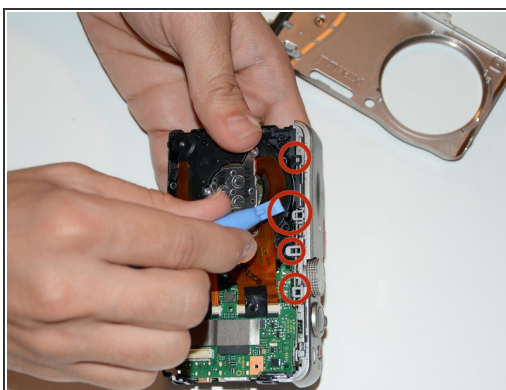
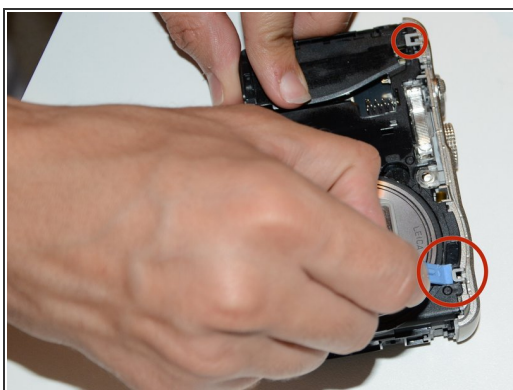
- Using the plastic opening tool, pull up on the edge of the circuit board until it clicks.
- Remove the board.

Step 15



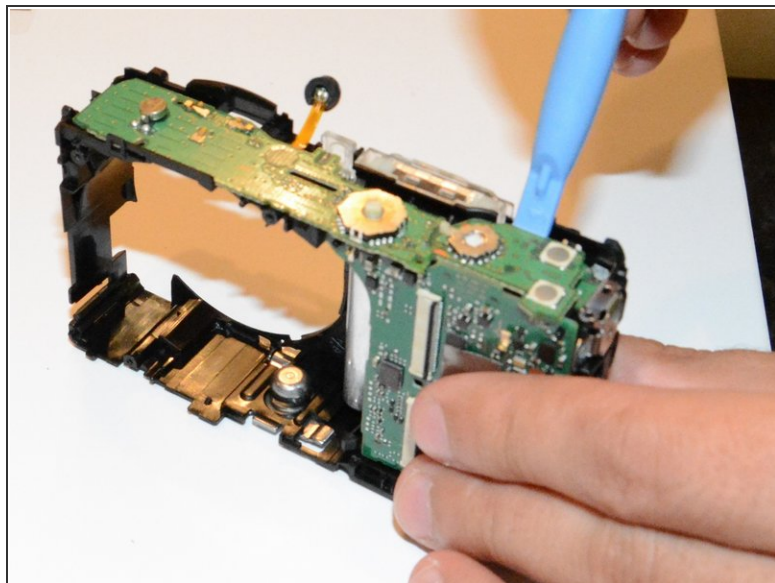
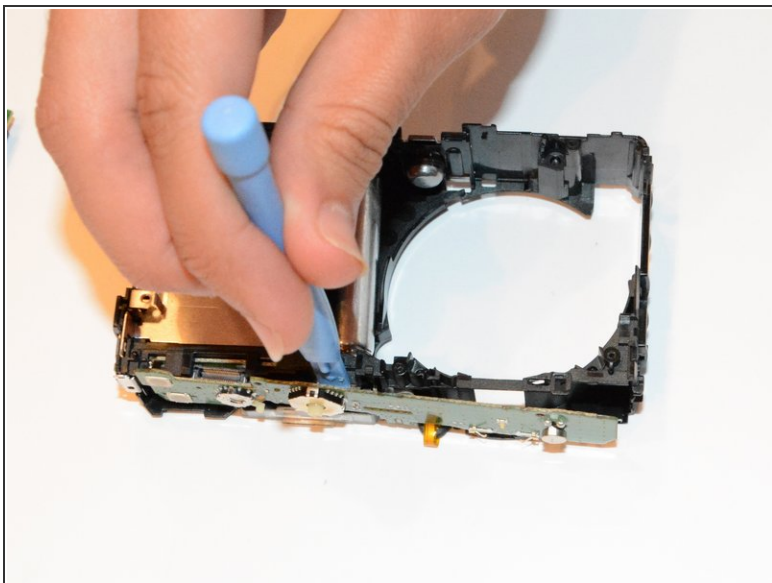
- Using a small screwdriver, remove the 3.7 mm screw near the green chip inside the camera, as shown. This will release the top of the camera.

Step 16



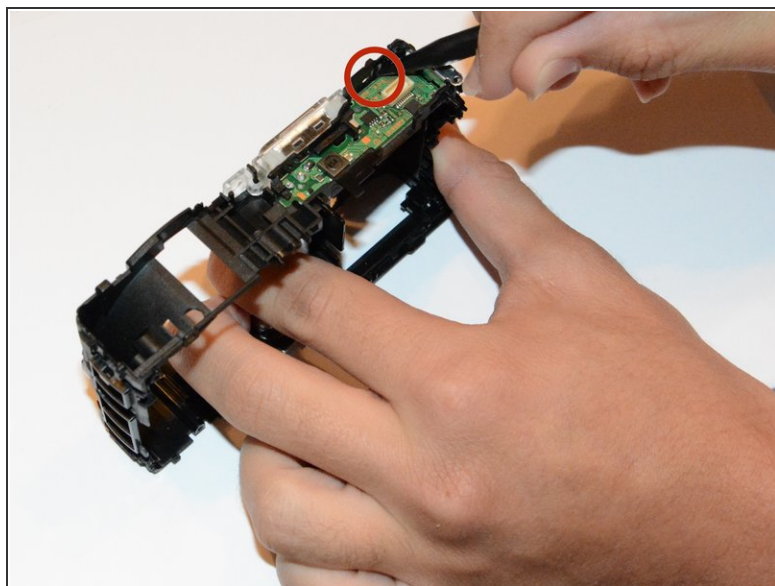
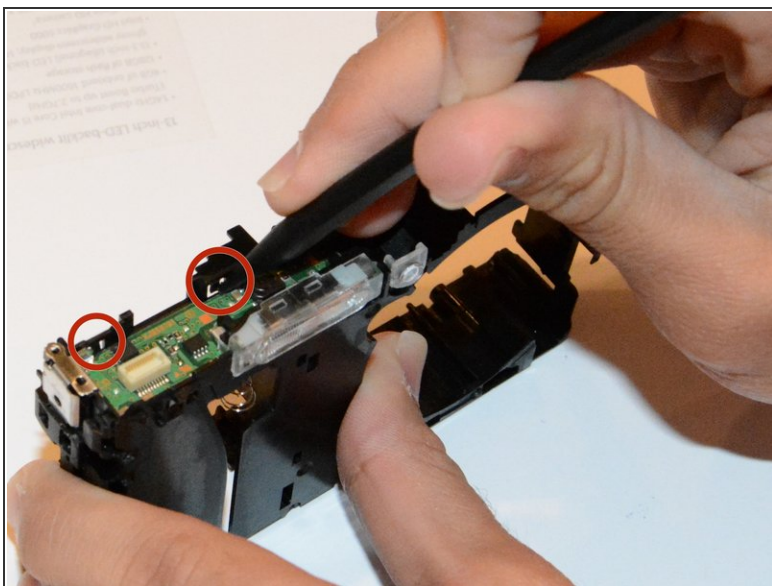
- Using the opening tool, pull up on the edge of the top cover to unlock it.

Step 17



- Using the opening tool, remove the top board.

Step 18



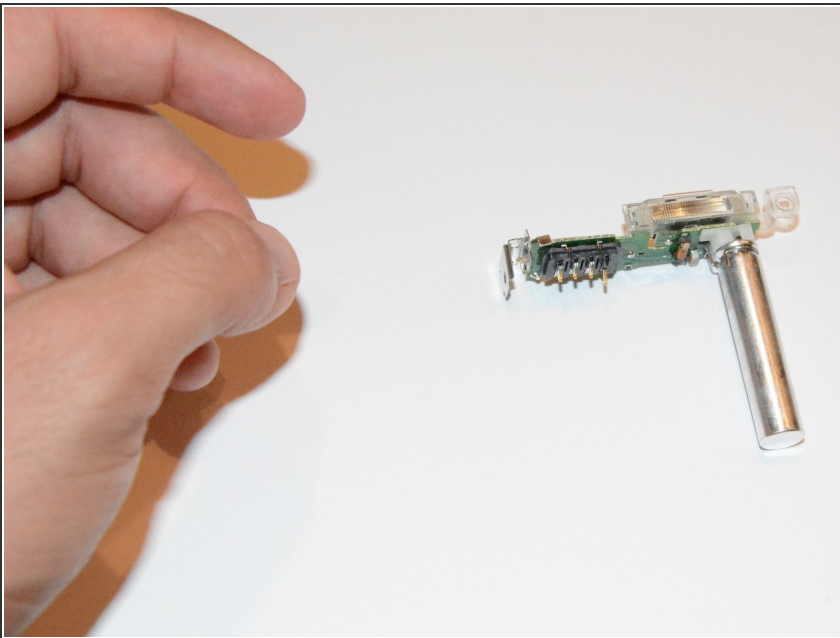
- Place the tip of the spudger at the edge of the top board, and work around three sides to loosen it.

Step 19



- Using the opening tool, lift up the top board. Now you will be able to safely remove the flash.

Step 20



- Remove the old flash, and put in the replacement.

To reassemble your device, follow these instructions in reverse order.