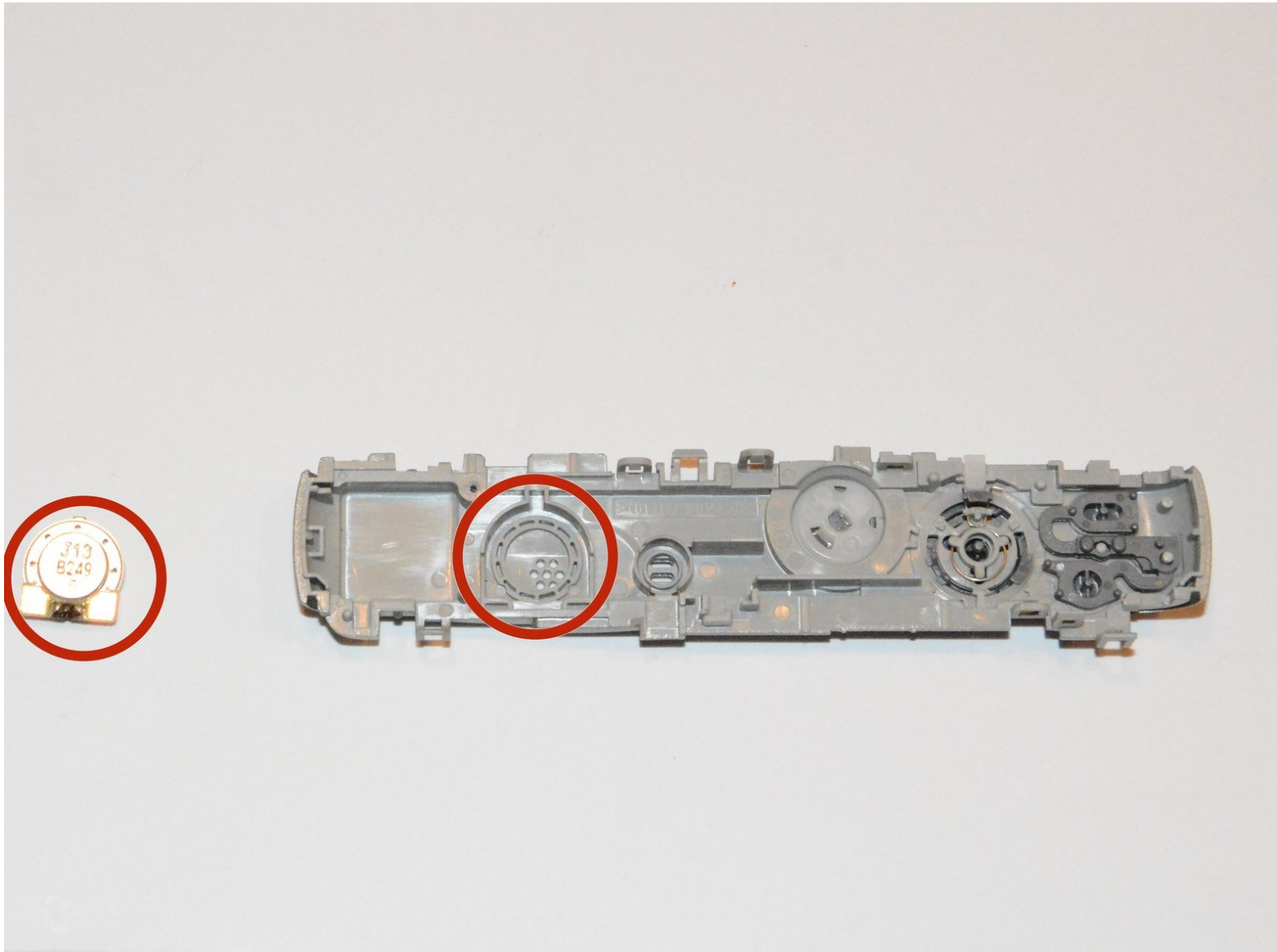




# Panasonic Lumix DMC-ZS25 Speaker Replacement

After replacing speaker, you will hear the sound again.

Written By: Abdulaziz Alotaibi



---

## INTRODUCTION

This guide will show you how to replace the speaker through a few steps.



### TOOLS:

- [Essential Electronics Toolkit](#) (1)
-

## Step 1 — Speaker



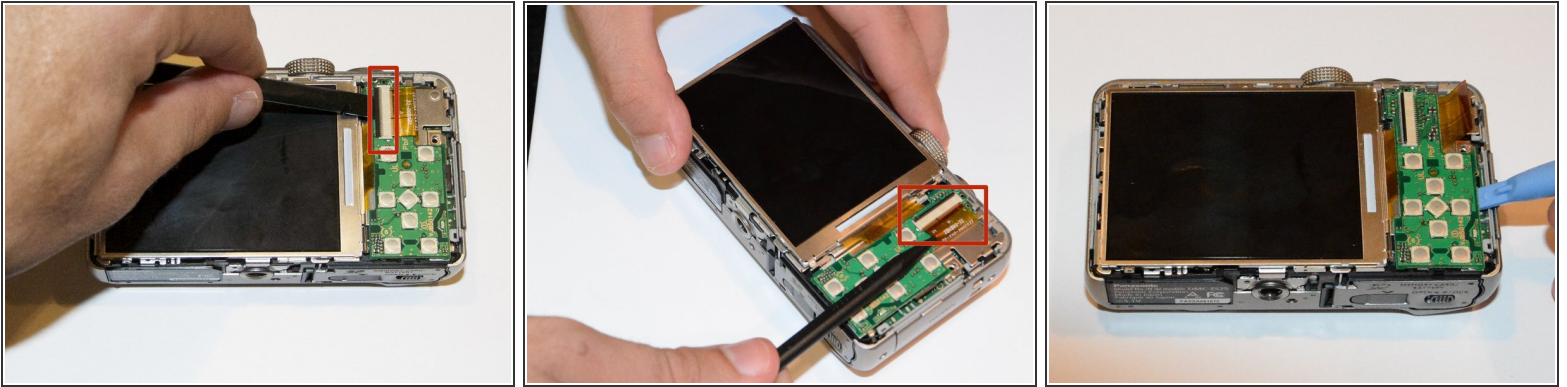
- Remove the four 3.4 mm screws from the right and left sides of your Panasonic Lumix Camera.
- Remove the two 2.6 mm screws located next to the battery.

## Step 2



- Use the plastic opening tool to lift off the rear cover of your device. Go gently to avoid breaking anything.
  - The easiest place to open your device is from the HDMI port.
- ⚠ Gently does it.

### Step 3

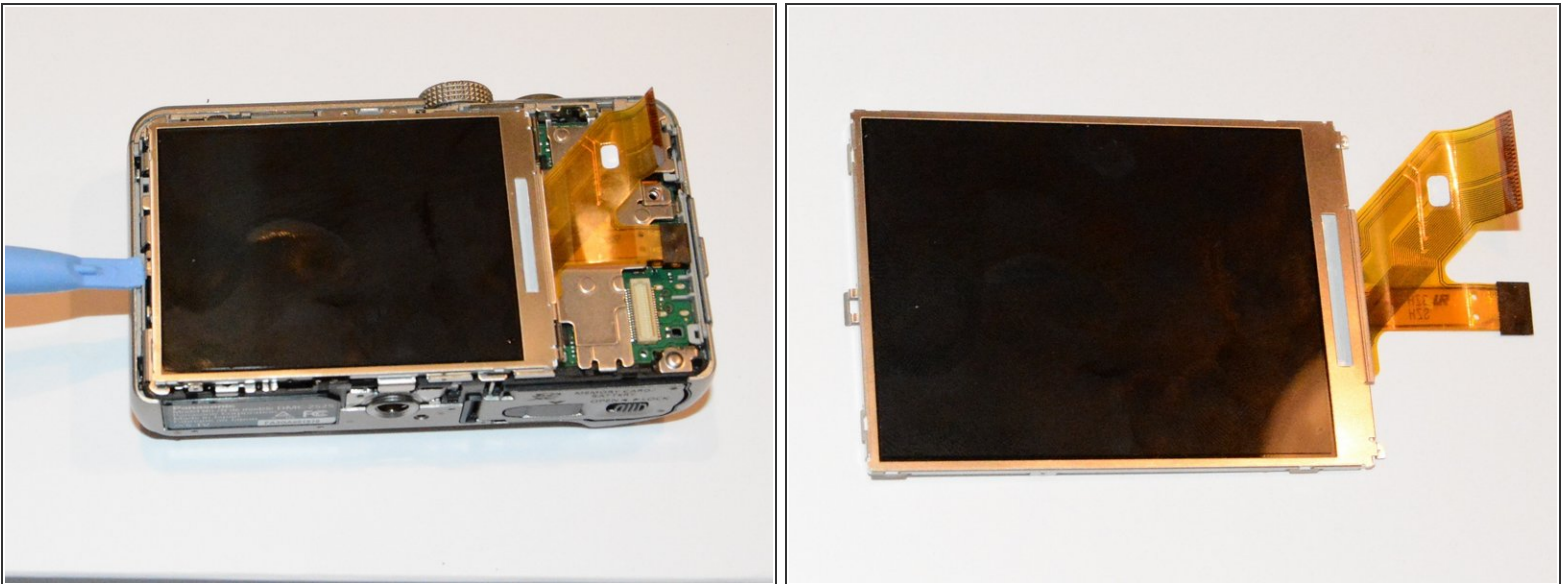


- Use a spudger to lift the LCD ribbon cable locking bar by angling it up, then withdraw the ribbon.

⚠ Take care not to break it.

- Use the plastic opening tool at the bottom right hand side of the button board to lift it up and out.
- The buttons board comes out with a "click" as it snaps out of a connector below.

### Step 4



- The LCD is retained by a clip on the left hand side, which you can release with a plastic opening tool.
- Lift the LCD from the left hand side, disengaging it at the right hand side from two small tabs.

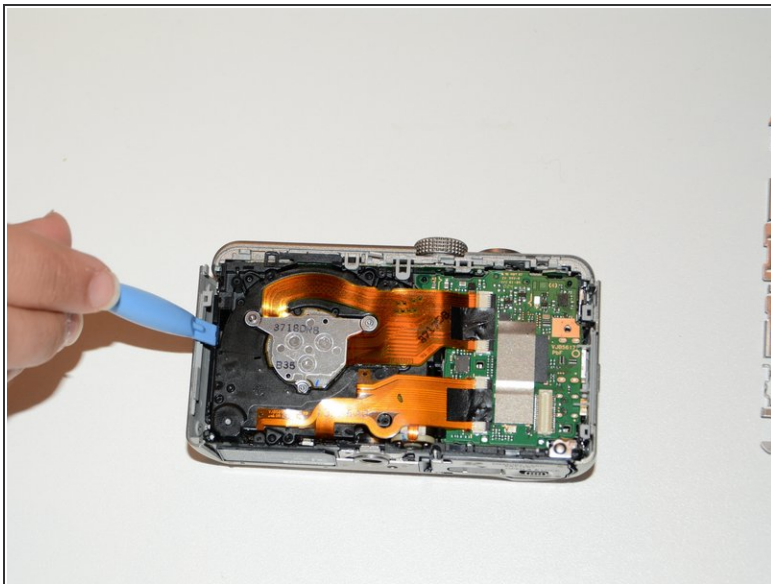


## Step 5



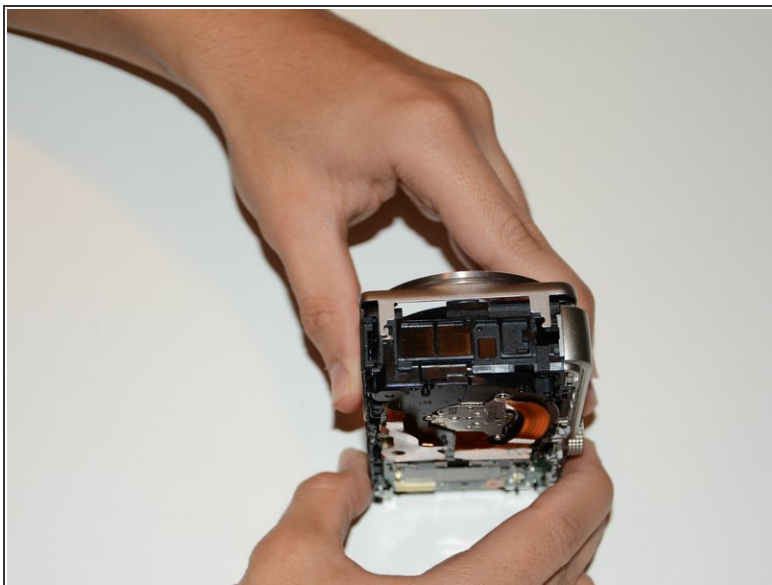
- Remove the two 4.2 mm screws in order to remove the inner cover located beneath the screen.
- Having removed the screws, use the plastic opening tool to lift off the inner cover, releasing it from clips on the top and bottom edges.

## Step 6



- Remove the side covers using the plastic opening tool.

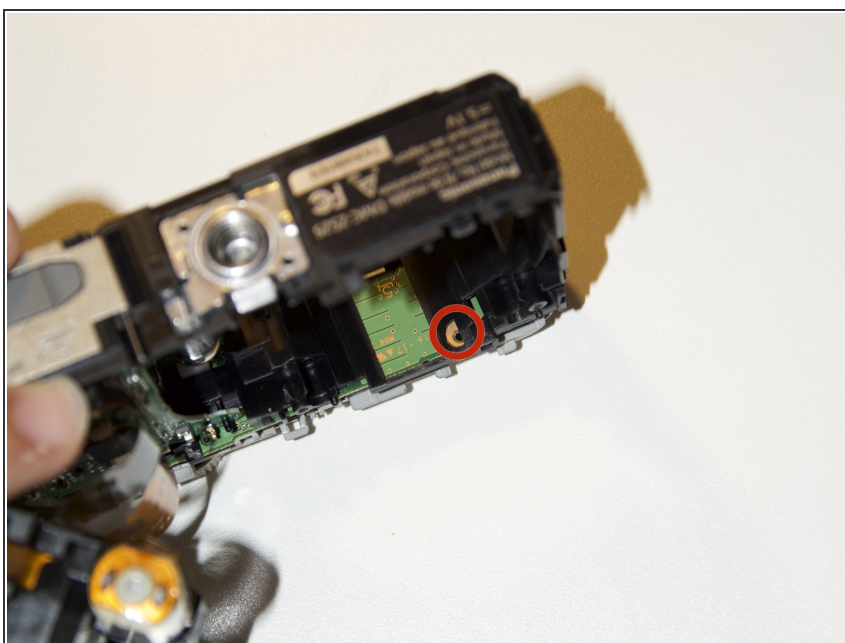
## Step 7



- After removing the side covers, you will be able to pull off the front cover.

⚠ Be careful when you pull the front cover to avoid breaking anything.

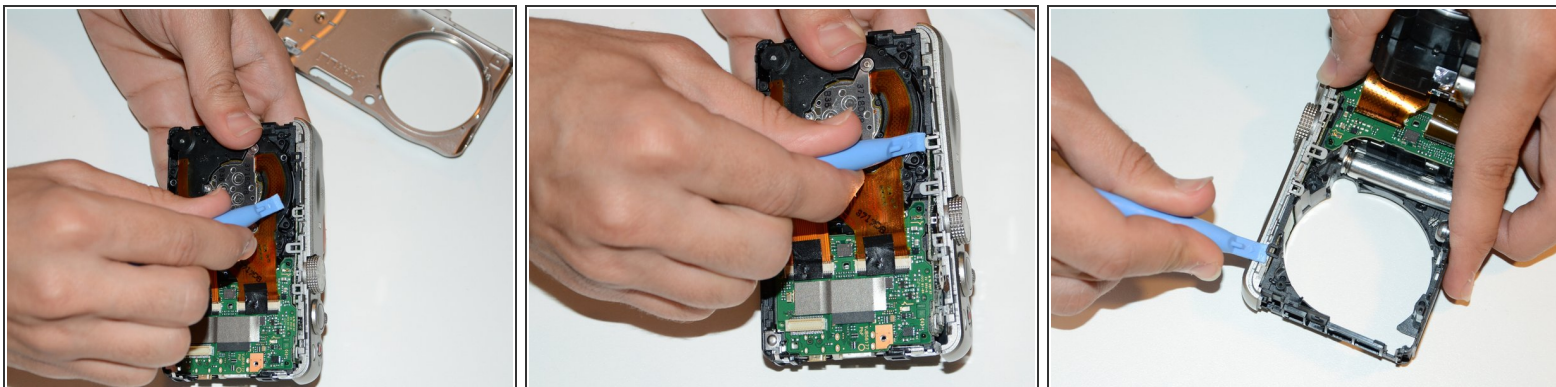
## Step 8



- To remove the top cover, you need to remove a 3.7 mm screw as shown.

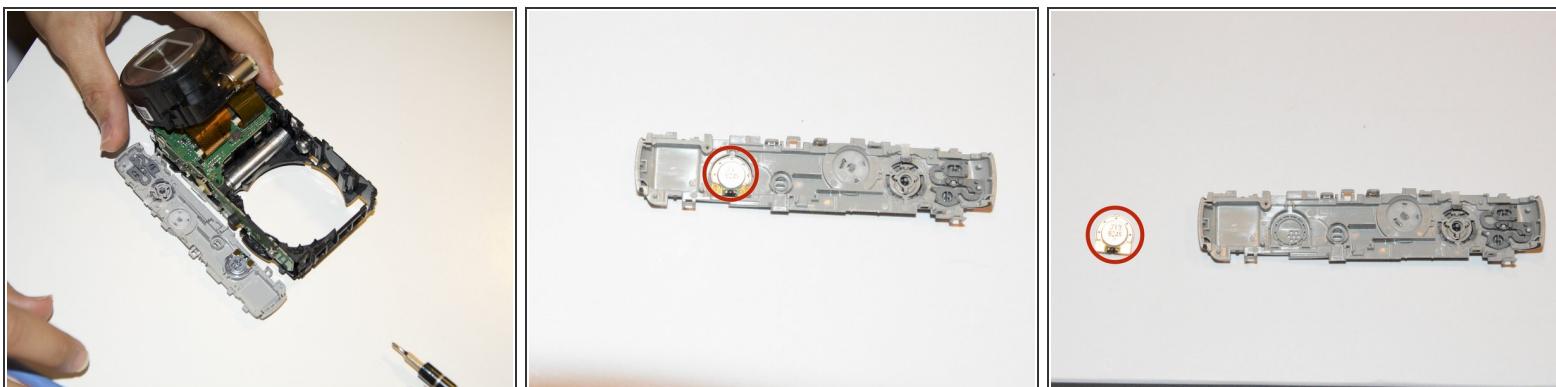


## Step 9



- Release the top cover by lifting several tabs with the plastic opening tool. Go gently to avoid breaking them.

## Step 10



- With the top cover removed the speaker can be very easily removed or replaced.

To reassemble your device, follow these instructions in reverse order.