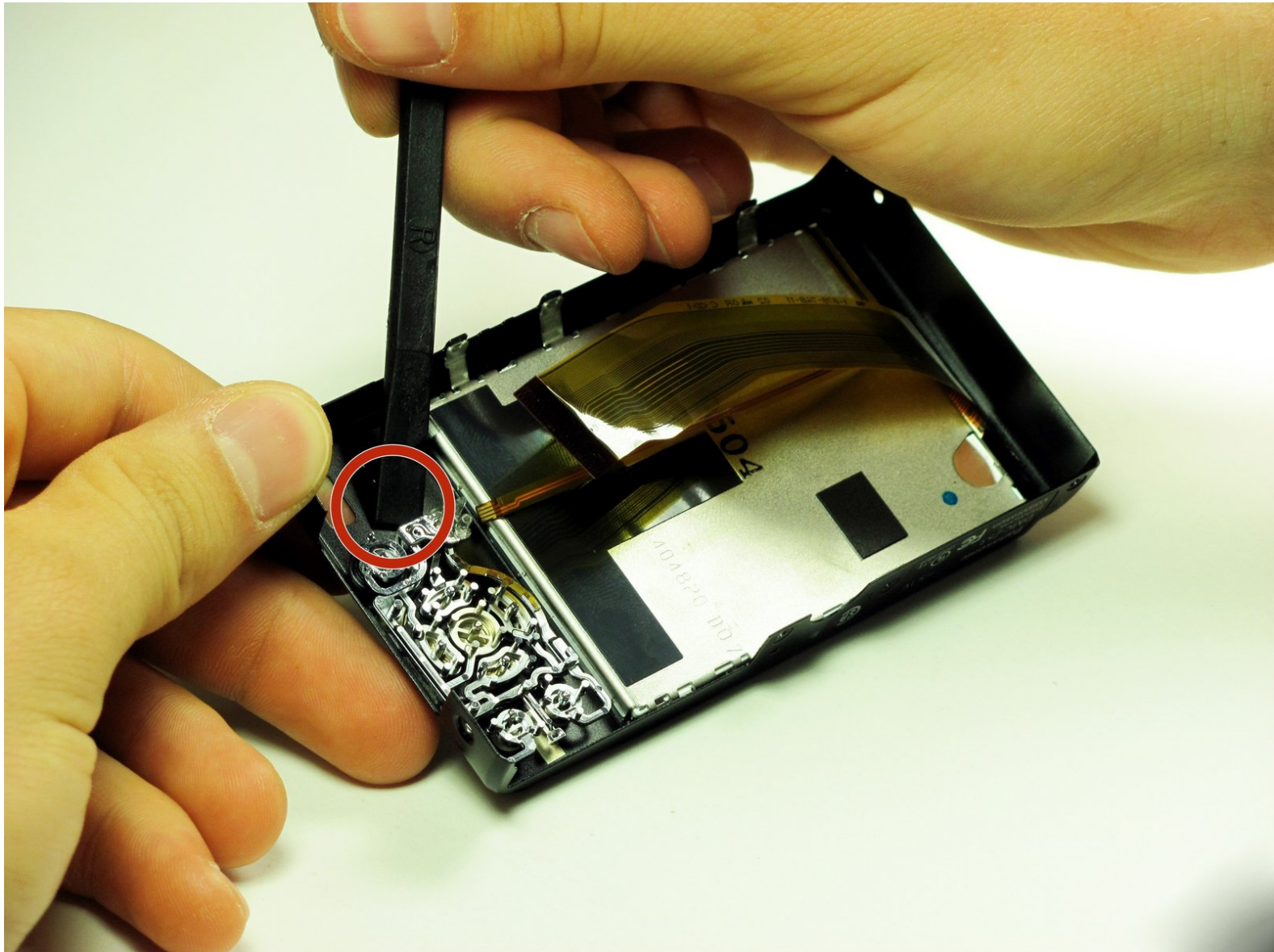




# Panasonic Lumix DMC-ZS3 Back panel buttons Replacement

(edit this) We will disassemble the camera and take out the back panel buttons.

Written By: Juan Pablo Quinonez Weston





## TOOLS:

- [Phillips #00 Screwdriver](#) (1)
  - [Spudger](#) (1)
-

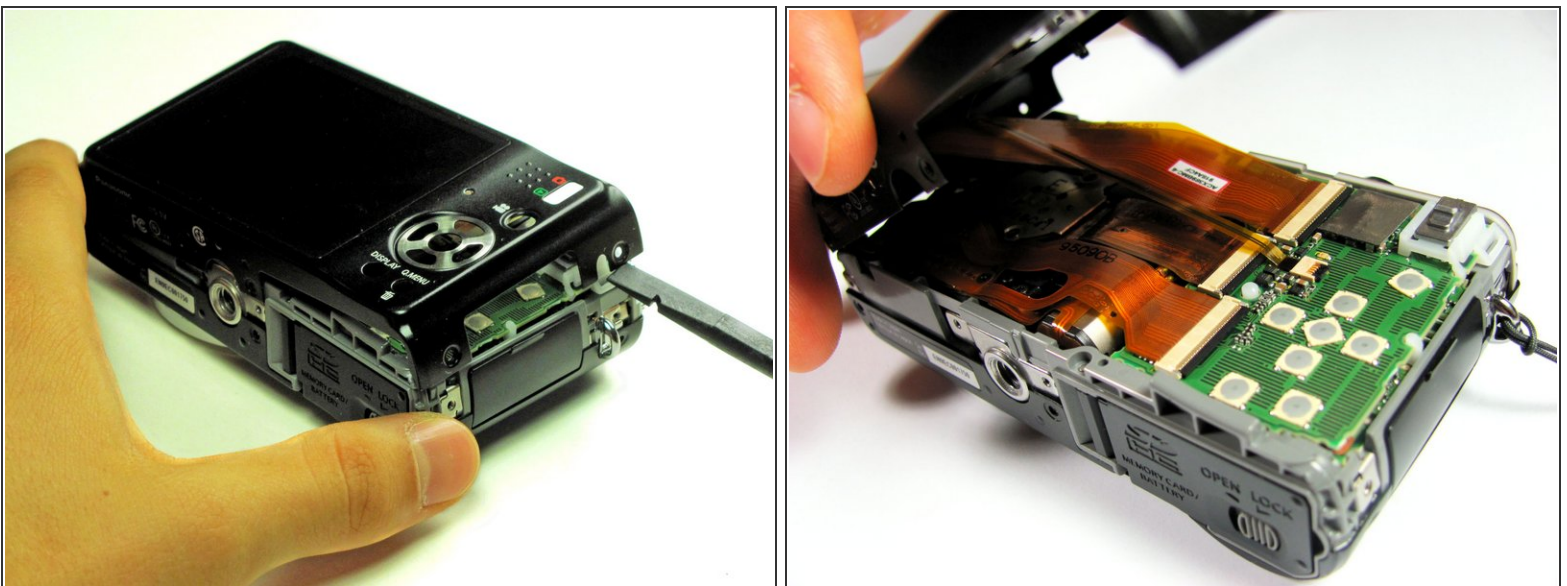
## Step 1 — Back Cover



- Remove the following eleven screws securing the covers to the ZS3
  - Eleven 3 mm Phillips screws

⚠ Using too much pressure when removing the screws may strip the screws and complicate screw removal at a later time.

## Step 2

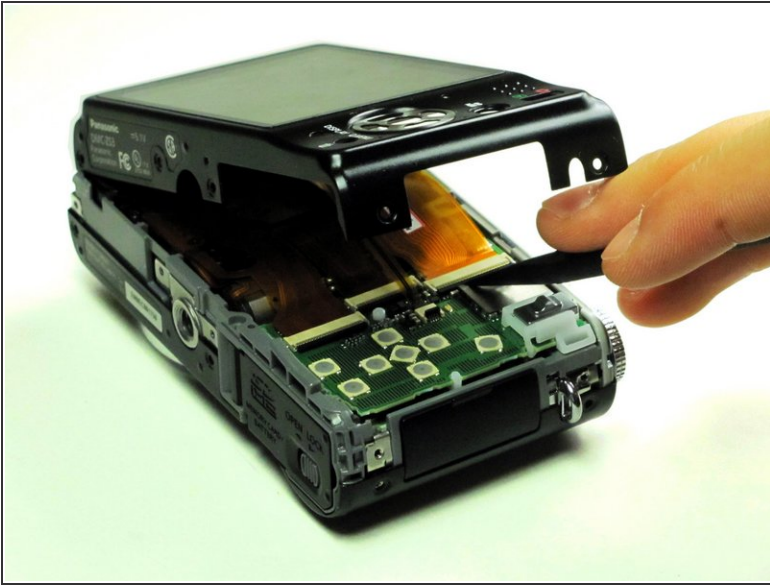


- Use the flat end of a spudger to pry apart the back cover from the rest of the unit as shown.

⚠ Be sure to carefully and slowly lift the back cover. Forcefully lifting the back cover and fully separating it at this point may ruin internal connections.



### Step 3



- Using your fingernail or a spudger, flip up the ZIF locking flap on the two LCD ribbon cable sockets that connect the back cover to the rest of the unit.

⚠ Be sure you are opening the locking tab, not pulling against the socket mounted to the board.

### Step 4



- Remove the two LCD board ribbon cables out of their sockets.

## Step 5 — Back panel buttons



- Use the flat end of the spudger to gently pry the buttons from the back panel.
  - Remove the buttons in three pieces, starting with the top left one, then moving to one next to it. Once this is finished remove the rest of the buttons.
- ⓘ The buttons are attached to the back cover using adhesive, and this may need to be reapplied to put them back on.

To reassemble your device, follow these instructions in reverse order.