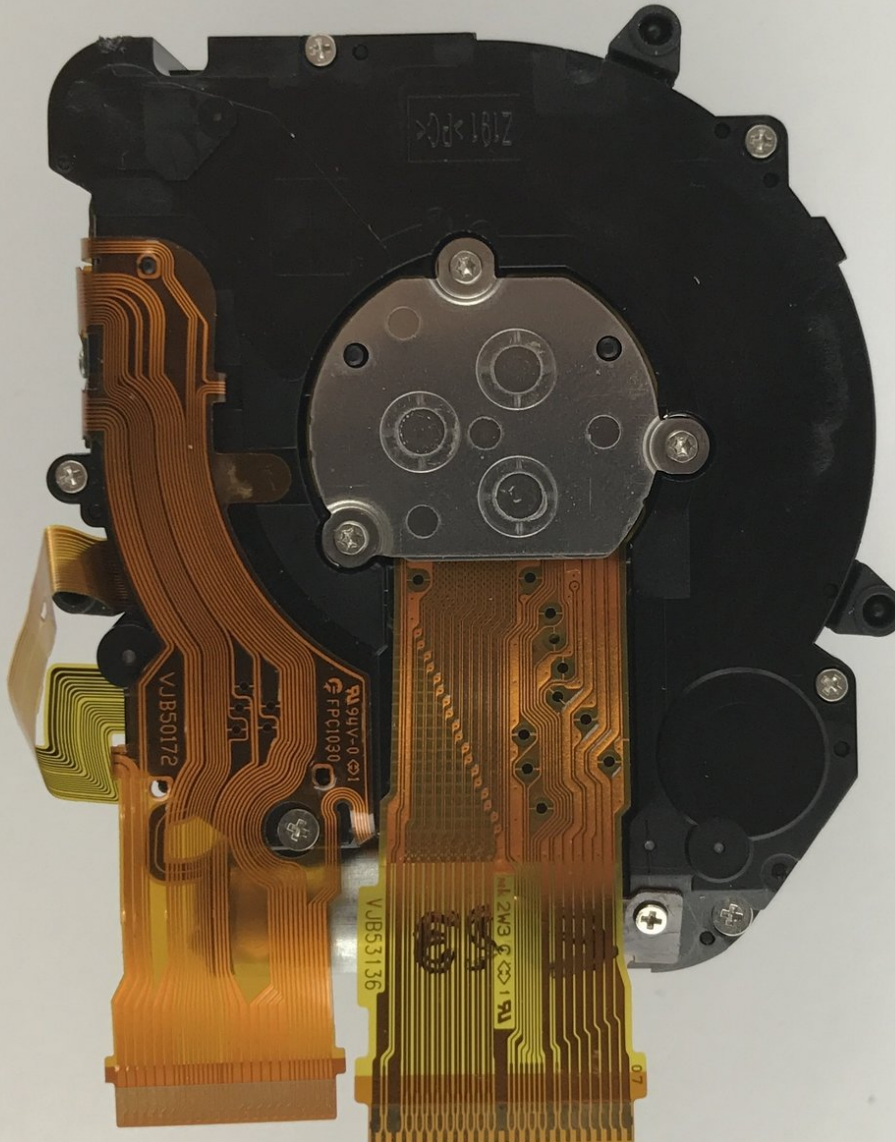




Panasonic Lumix DMC-ZS40 Camera Lens Replacement

Panasonic Lumix DMC-ZS40 lens replacement. If your lens is cracked or damaged in any way this is the replacement guide.

Written By: Dean Favetta



INTRODUCTION

If you ever drop your camera and the lens cracks, this guide will help you replace your current broken lens with a brand new one.



TOOLS:

- [Tweezers](#) (1)
 - [T3 Torx Screwdriver](#) (1)
 - [Phillips #000 Screwdriver](#) (1)
-

Step 1 — Battery



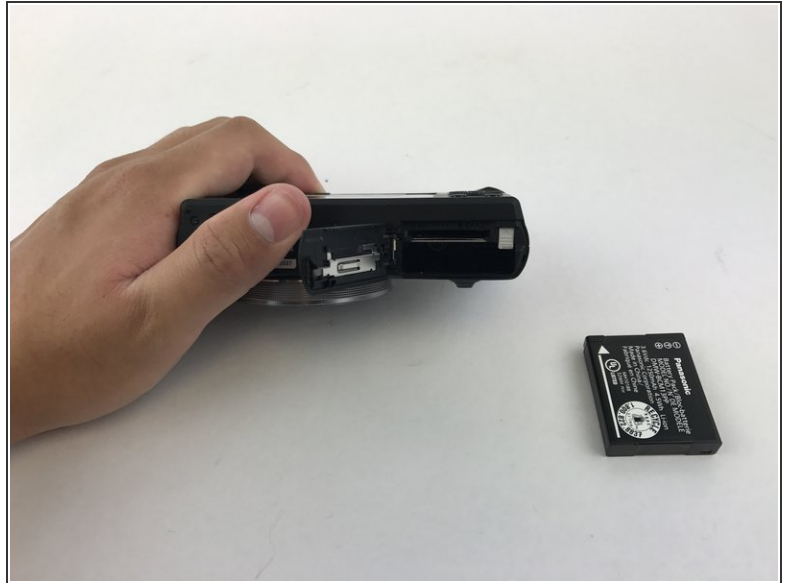
- Find the battery/memory card door on the bottom right of the camera.
- Use your finger or screw driver to slide the grey latch from the locked position to the open position. This will swing open the door.

Step 2



- Push up on the right-hand-side tab to release the battery.

Step 3



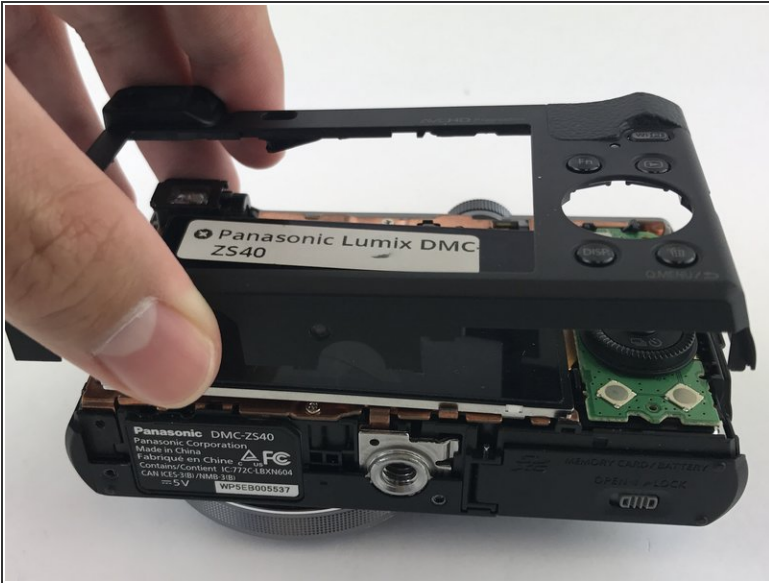
- Remove battery from camera.

Step 4 — LCD Screen



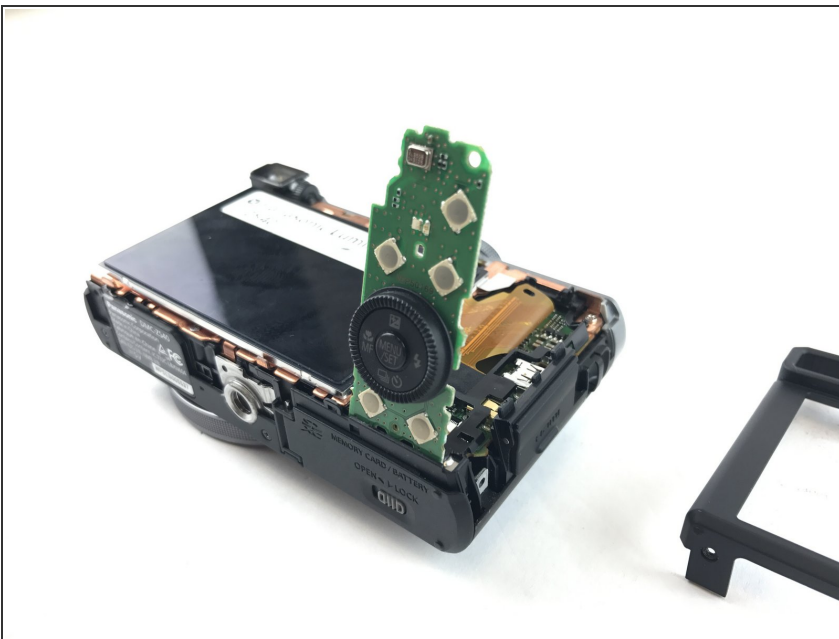
- Unscrew the five 3mm screws located around the sides of the camera using a PH000 bit or Phillips 000 Screwdriver.

Step 5



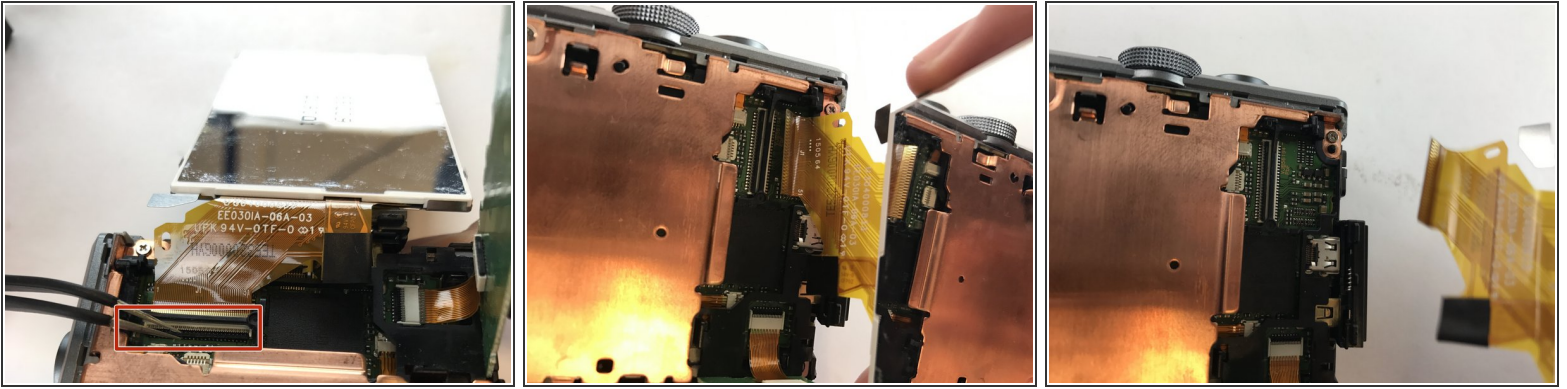
- Pry off the back casing of the camera and place the camera face down.

Step 6



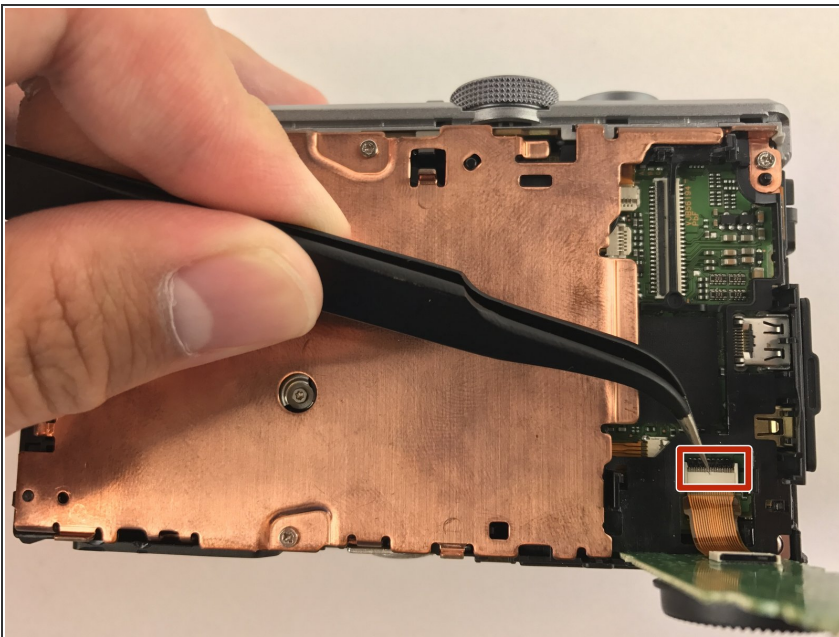
- Flip the right hand side control dial circuit board up.

Step 7



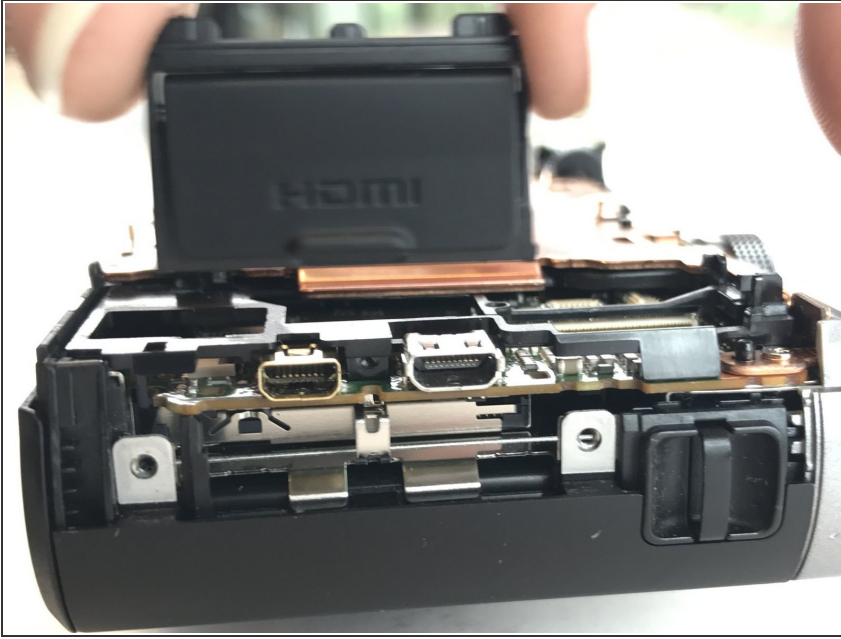
- Turn the LCD screen over to the side exposing the connection to the motherboard.
 - Remove the display data cable connecting the LCD screen to the motherboard. Using tweezers, pry up the black retaining flap then gently pull the display data cable free.
- ⚠ Be careful when handling any display data cables in the camera as they are prone to tearing.
- 🔧 To close for reassembly, slide the display data cable back into the ZIF connector and close the retaining flap.

Step 8 — Motherboard




- Disconnect the control dial from the motherboard. Locate the ZIF connector for the control dial. Use tweezers or screwdrivers to lift up on the retaining flap to remove the ribbon cable.
- ⚠ The connector ribbons are prone to tearing so use care during removal.

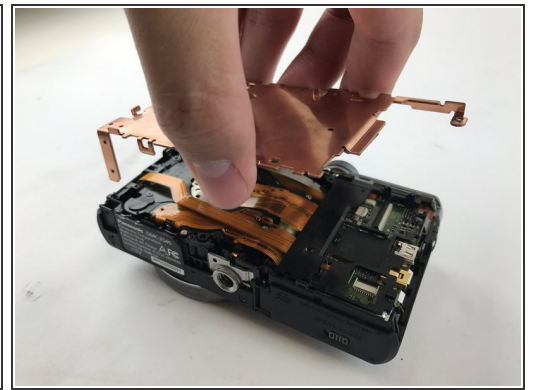
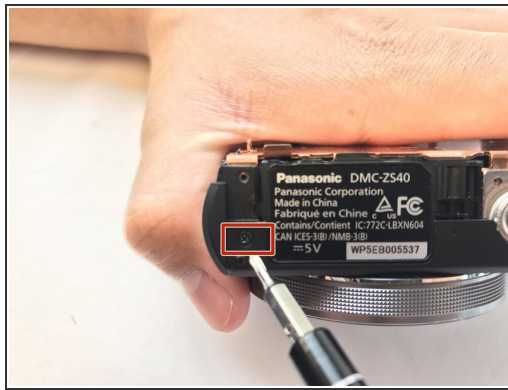
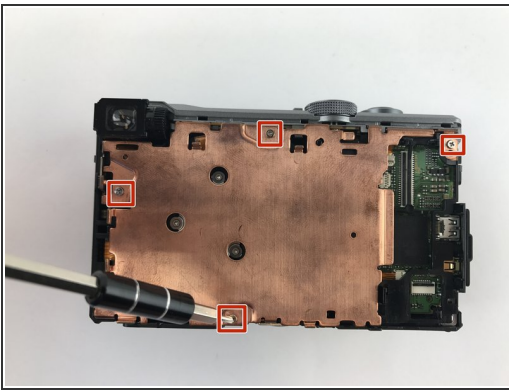
Step 9



- Pry the HDMI cover off the side of the camera.

 No tools are required for this step.

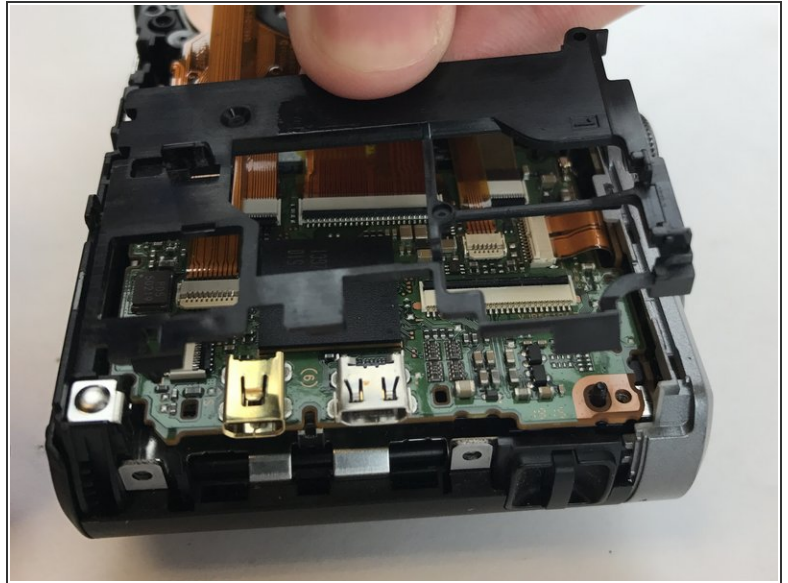
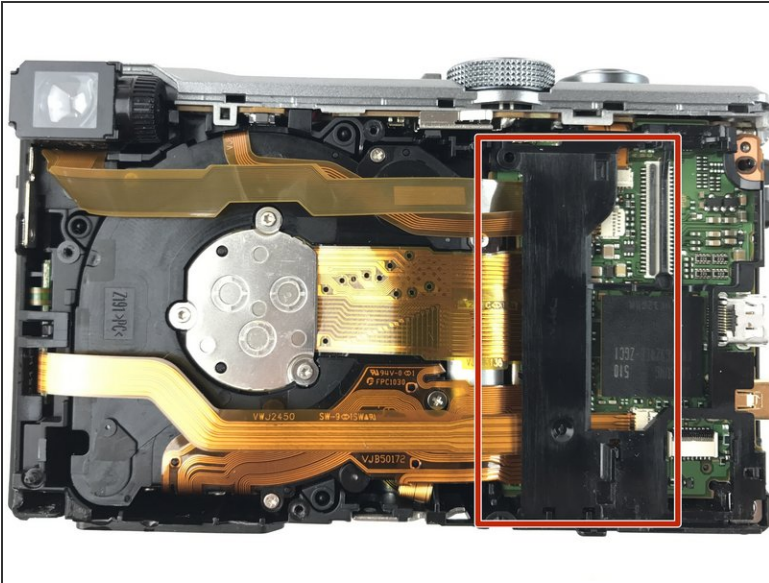
Step 10



- Remove these four 4mm on the top of the plate cover and the 3mm screw on the side of the camera using a PH000 bit head. Once the screws are removed, the plate cover should lift right up.

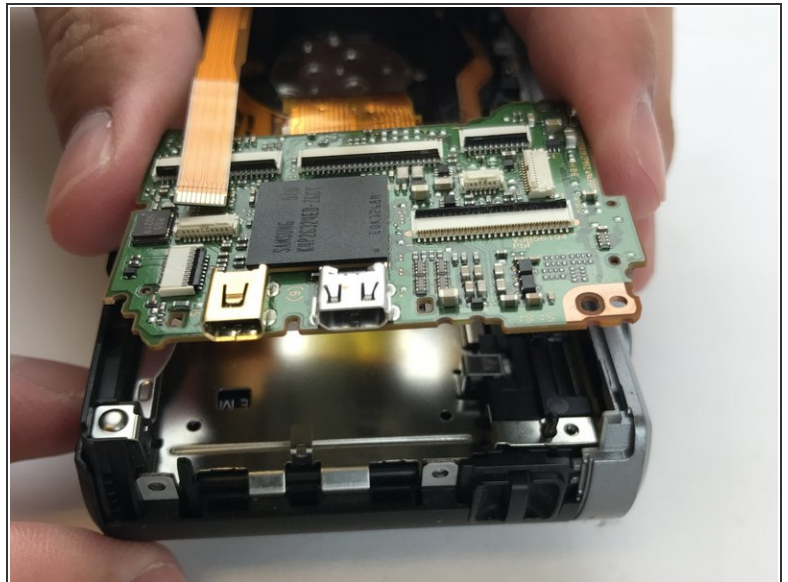
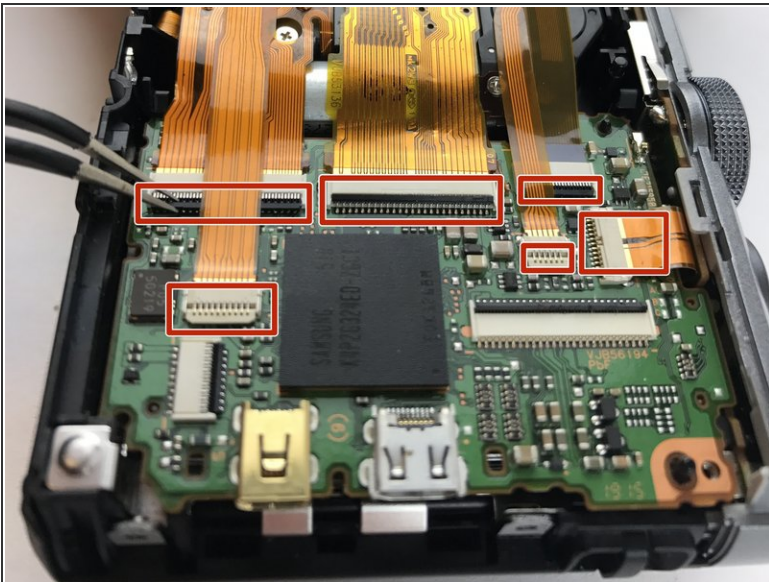
 Keep track of the different screw lengths and do not mix them up.

Step 11



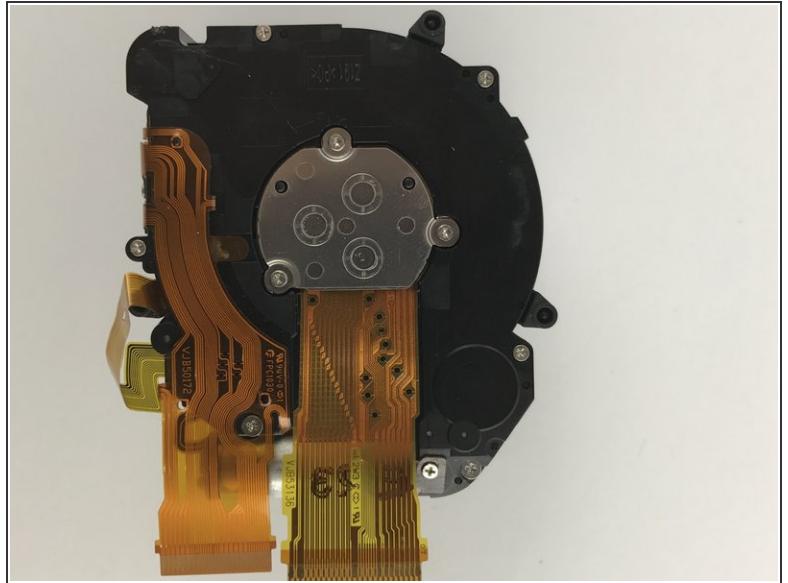
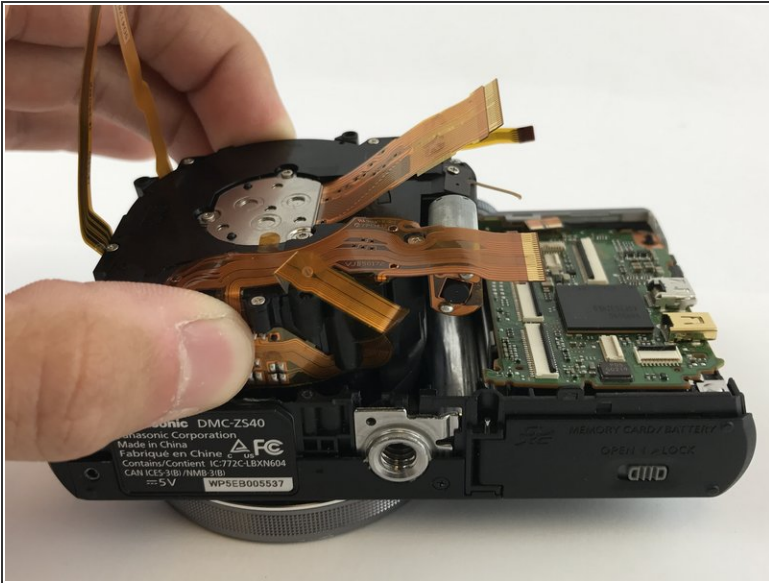
- Pry the black cover shielding the ZIF connectors off with your hand.

Step 12



- Disconnect these 6 ribbon cables from the motherboard. Use tweezers or a screw driver to lift up on the retaining flaps for each ZIF connector.

Step 13 — Camera Lens



- Once the corresponding ribbon cables have been detached, the lens assembly can be lifted right up.

To reassemble your device, follow these instructions in reverse order.