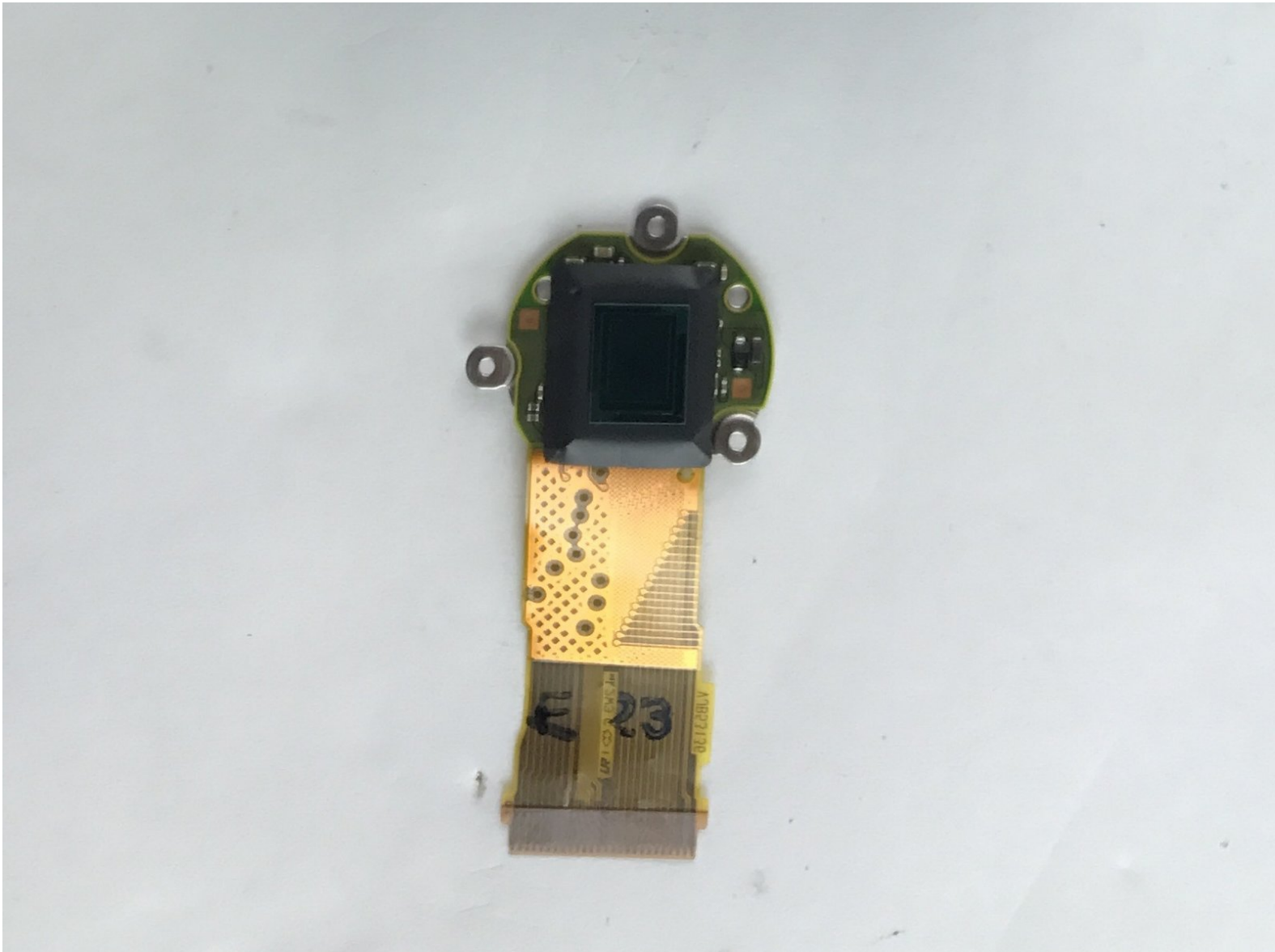




Panasonic Lumix DMC-ZS40 Camera Sensor Replacement

Panasonic Lumix DMC-ZS40 camera sensor replacement.

Written By: Dean Favetta



INTRODUCTION

You may need to replace or clean your Panasonic Lumix DMC-ZS40 Camera Sensor if splotches/dirt are appearing in your photos, or if the LCD screen remains black when attempting to take photos.



TOOLS:

- [Tweezers](#) (1)
 - [Phillips #000 Screwdriver](#) (1)
 - [Phillips T3 Screwdriver](#) (1)
-

Step 1 — Battery



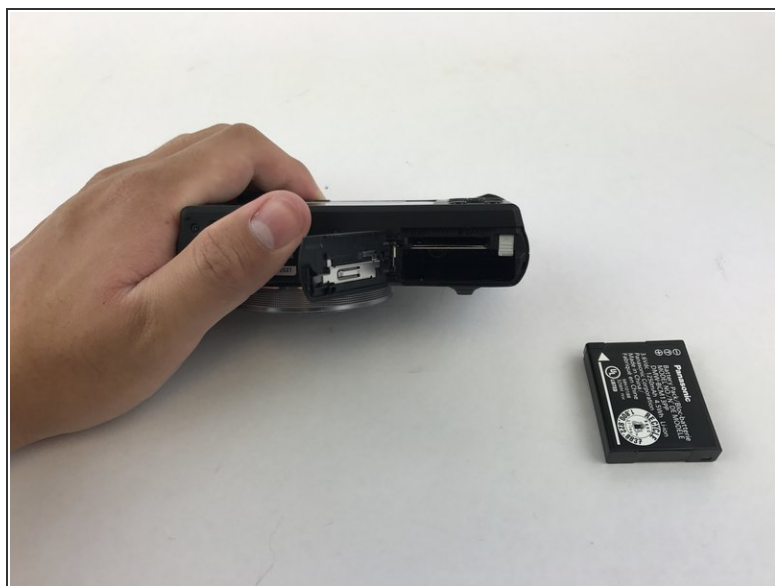
- Find the battery/memory card door on the bottom right of the camera.
- Use your finger or screw driver to slide the grey latch from the locked position to the open position. This will swing open the door.

Step 2



- Push up on the right-hand-side tab to release the battery.

Step 3



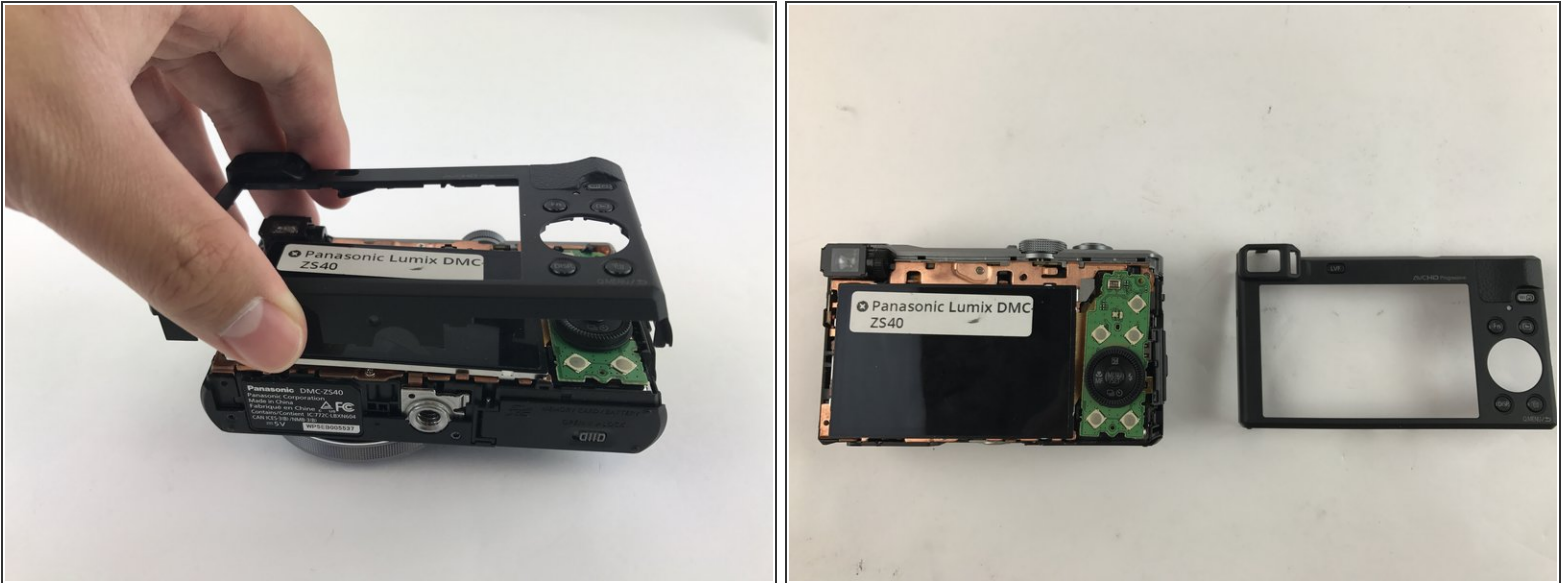
- Remove battery from camera.

Step 4 — Camera Sensor



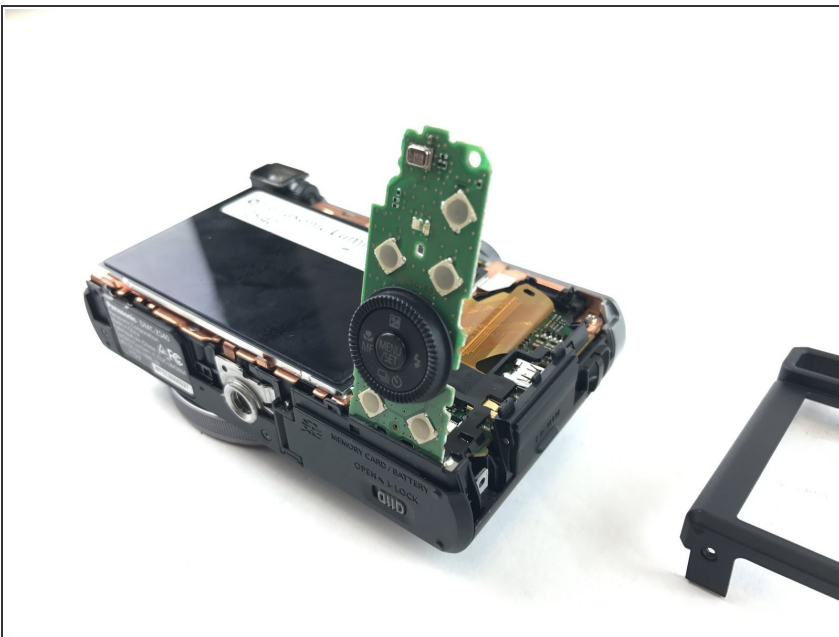
- Unscrew these five 3mm screws located around the sides of the camera using a screw driver with a PH000 bit head.

Step 5



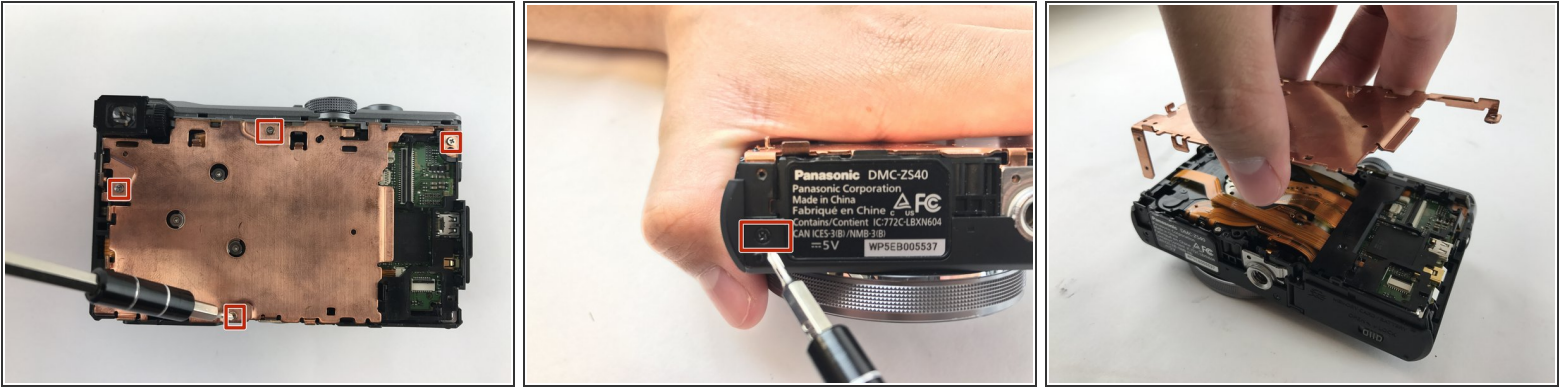
- Pry off the back casing of the camera and place the camera face down.



Step 6



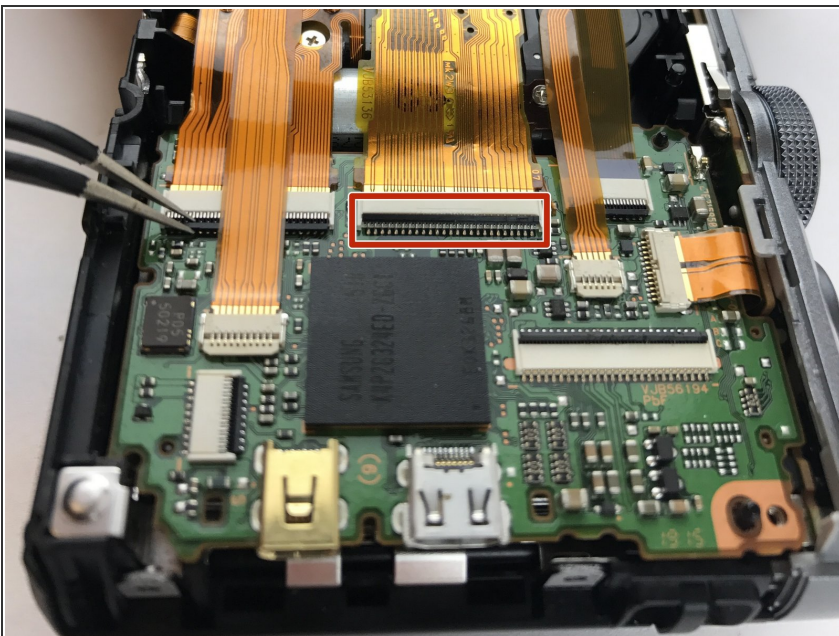
- Flip the right hand side control dial circuit board up.

Step 7



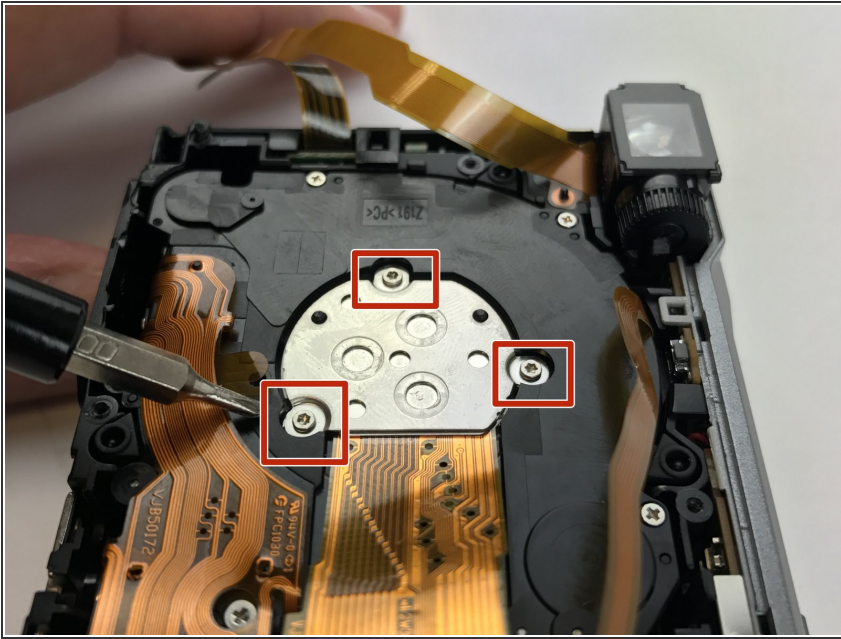
-  Place the LCD screen to the side while you remove the plate cover. The LCD has already been removed in this picture. It is not necessary to remove the LCD screen or the control dial for this guide.
- Remove these four 4mm screws and the 3mm screw on the top of the plate cover and on the side of the camera using a PH000 bit head. Once the screws are removed, the plate cover should lift right up.
-  Keep track of the different screw lengths and do not mix them up.

Step 8



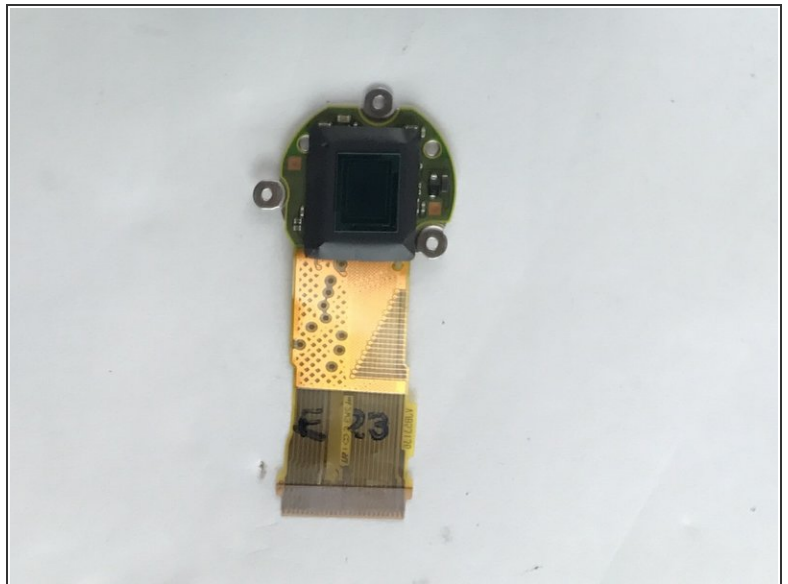
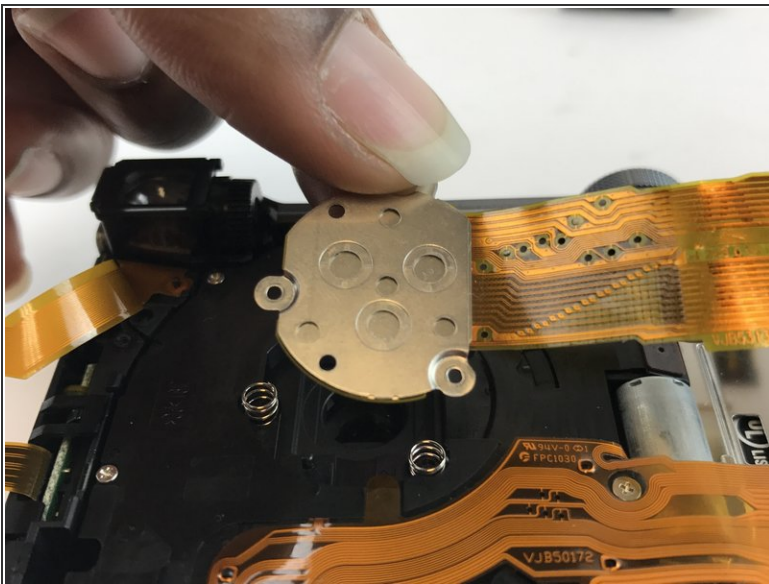
- Remove the ribbon cable connecting the sensor to the motherboard. Use tweezers or a screw driver to lift up on the retaining flap of the ZIF connector to remove the cable.

Step 9



- Using the T3 Phillips Screwdriver, unscrew the three Torx T3 2.5mm screws holding the sensor down.

Step 10



- Gently lift the sensor off of the springs.

To reassemble your device, follow these instructions in reverse order.