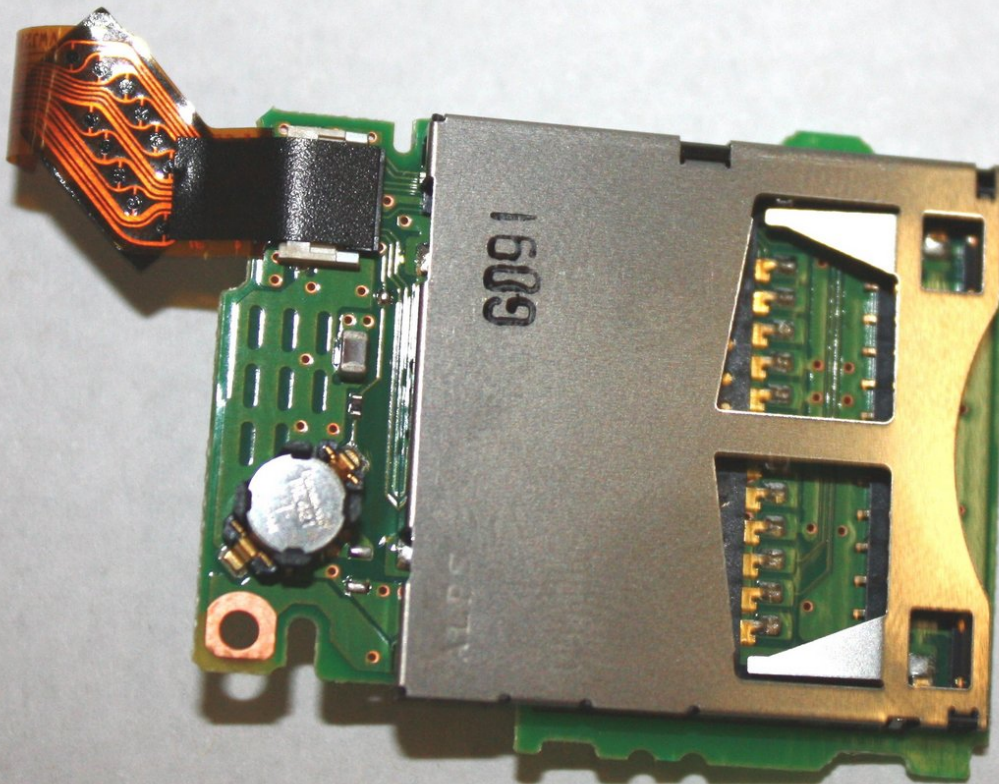




Panasonic Lumix DMC-ZS6 SD Card Reader Replacement

How to replace a Panasonic Lumix DMC-ZS6 SD card reader.

Written By: Derrick Thompson



INTRODUCTION

This step-by-step guide will help you replace any damaged or malfunctioning SD card reader from your camera correctly.



TOOLS:

- [Phillips #000 Screwdriver](#) (1)
 - [Spudger](#) (1)
-

Step 1 — SD Card Reader



- Remove the battery and the SD card.

Step 2



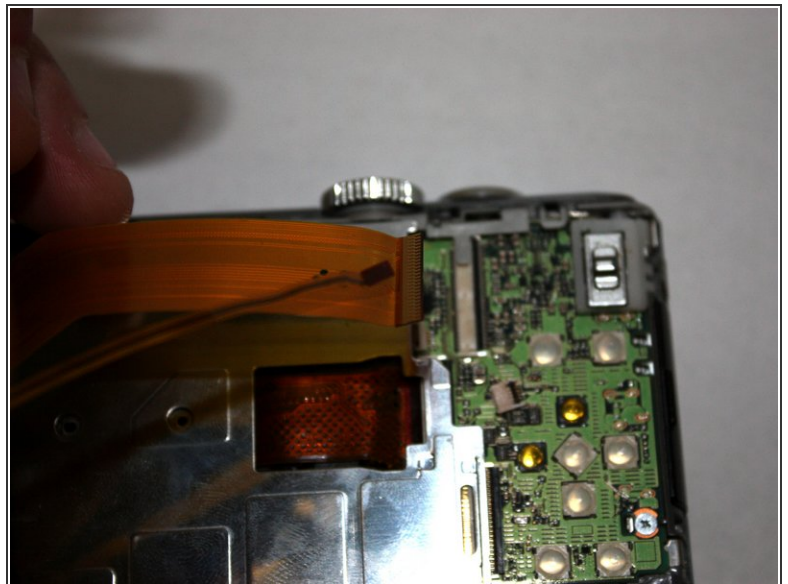
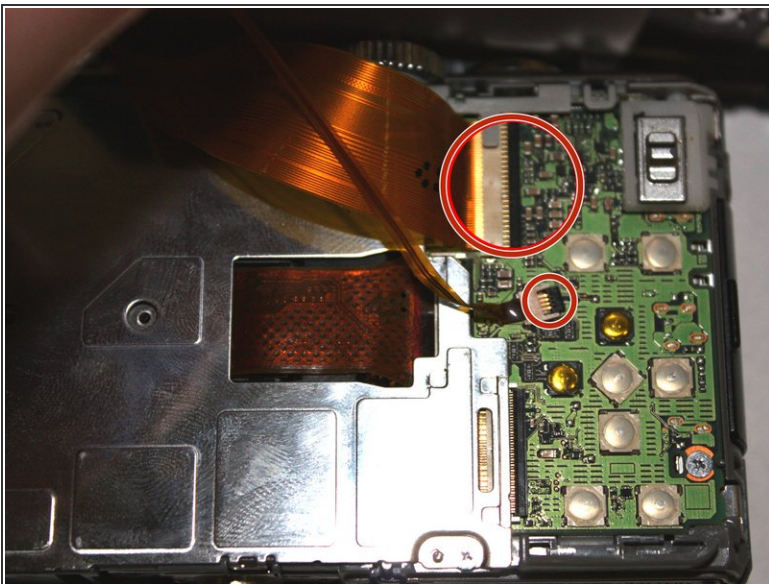
- Unscrew the bottom two 1.0 mm screws with a Phillips #000 screwdriver.
- Unscrew the two 1.0 mm screws on the right with a Phillips #000 screwdriver.
- Unscrew the two 1.0 mm screws on the left with a Phillips #000 screwdriver.

Step 3



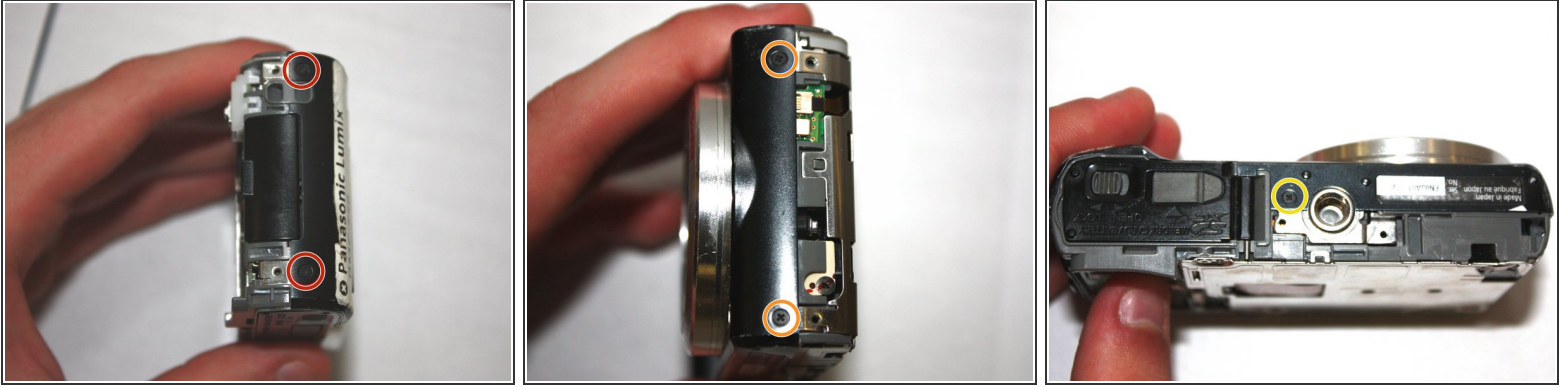
- Carefully separate the back of the camera from the main body.
- ⚠ Do not apply excessive force. The LCD is connected by ribbon cables that can be easily damaged.

Step 4



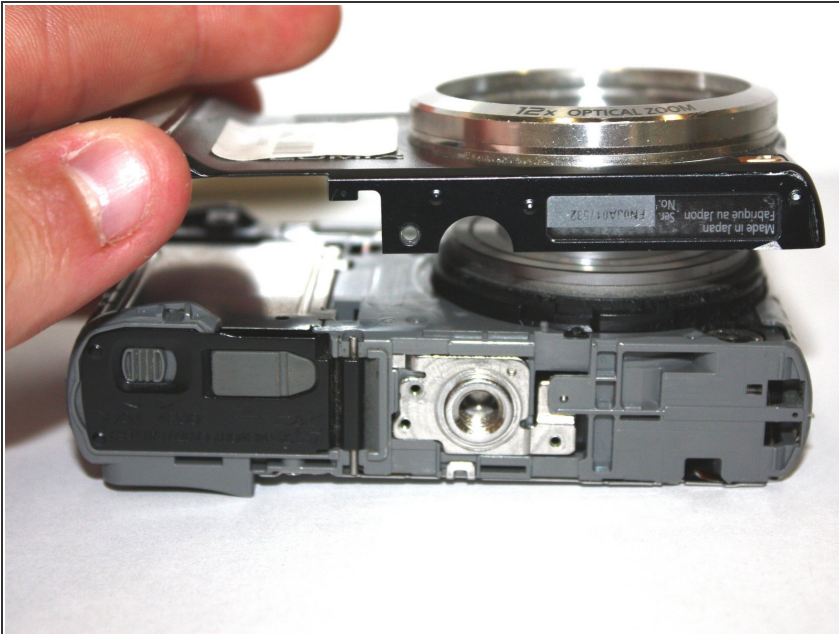
- Use the tip of the spudger to flip up the black tabs on the ribbon cables.
- Pull gently on the ribbon cables to unseat them.

Step 5



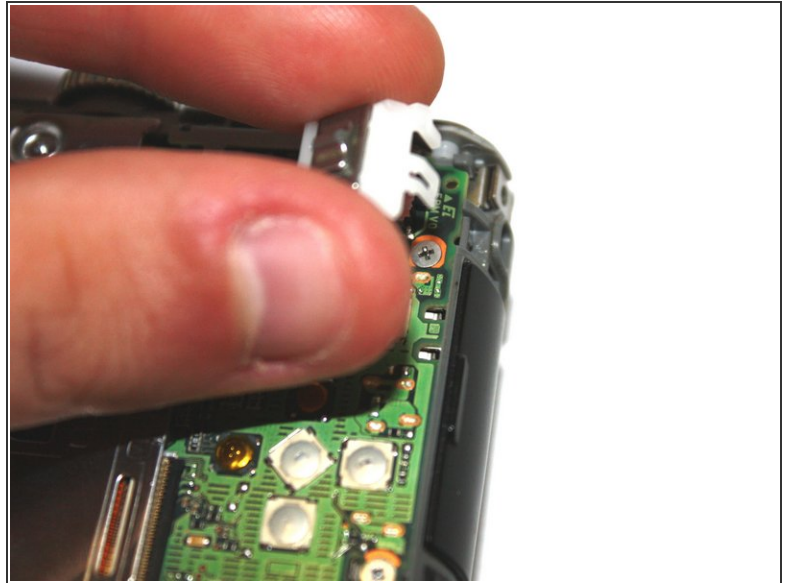
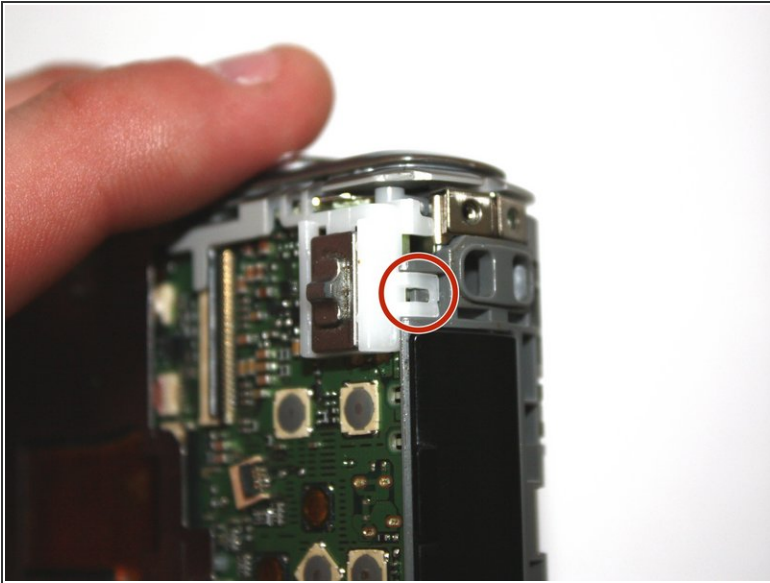
- Unscrew the two 1.0 mm screws on the right with a Phillips #000 screwdriver.
- Unscrew the two 1.0 mm screws on the left with a Phillips #000 screwdriver.
- Unscrew the bottom 1.0 mm screw with a Phillips #000 screwdriver.

Step 6



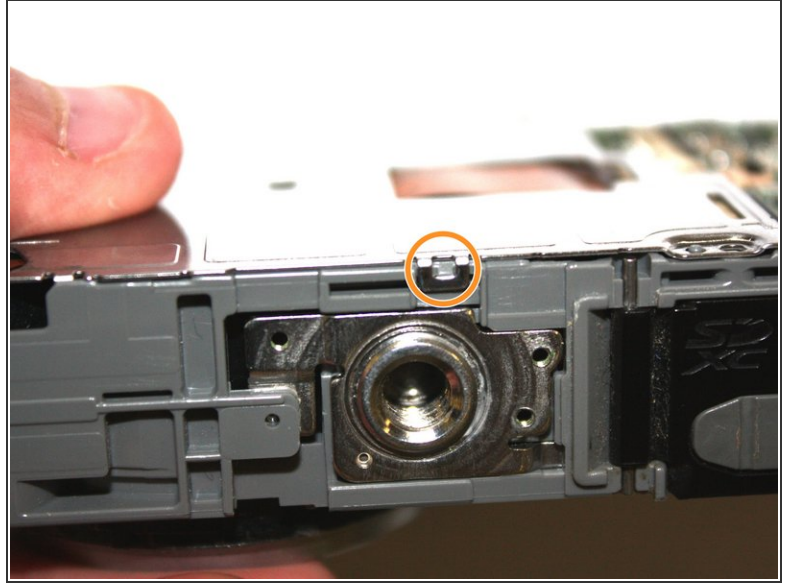
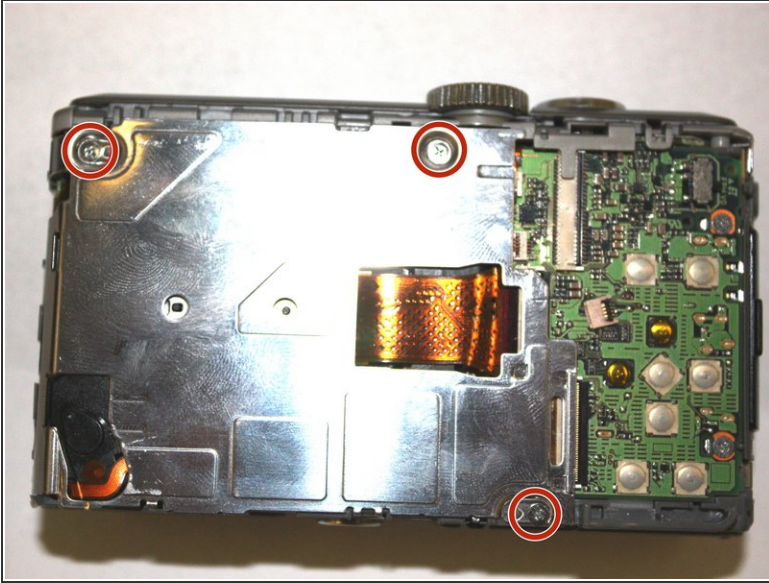
- Separate the front of the camera from the main body.

Step 7



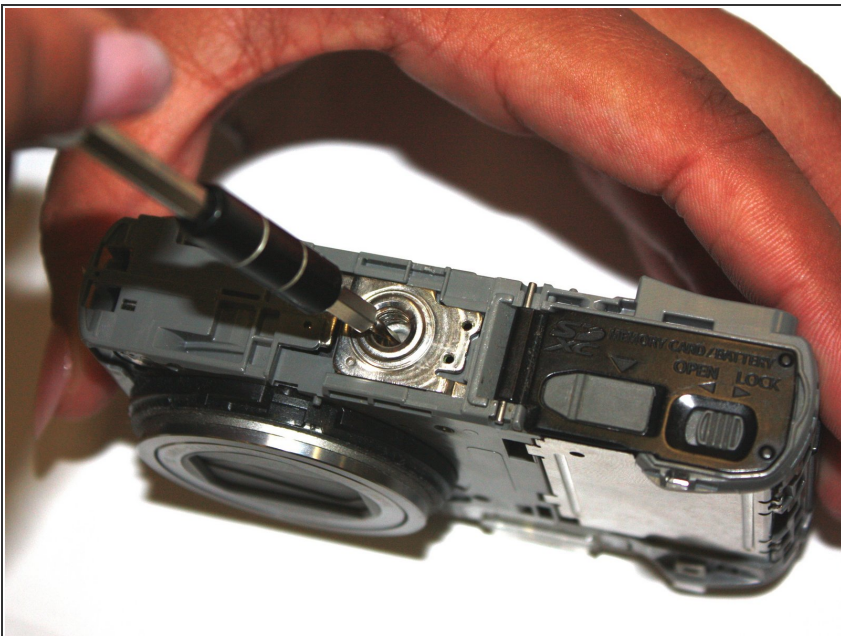
- Use the tip of the spudger to disengage the plastic tab.
- Carefully lift the selector switch away from the motherboard.

Step 8



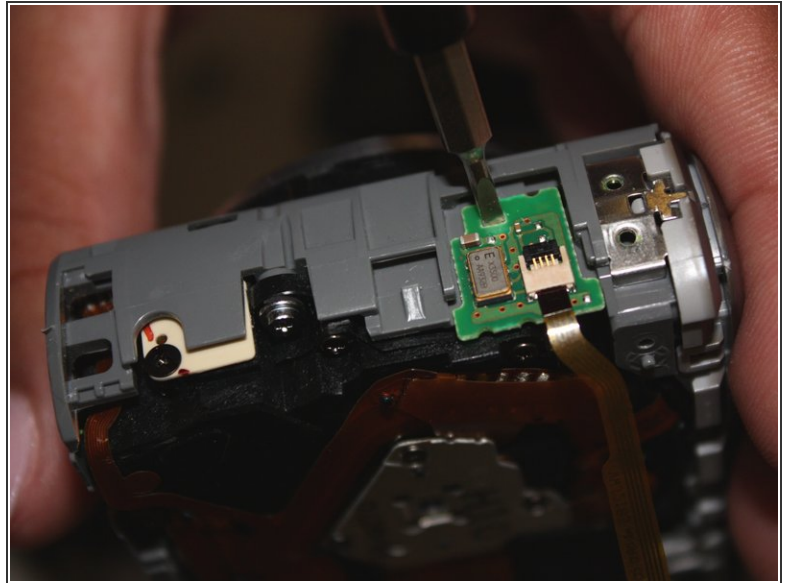
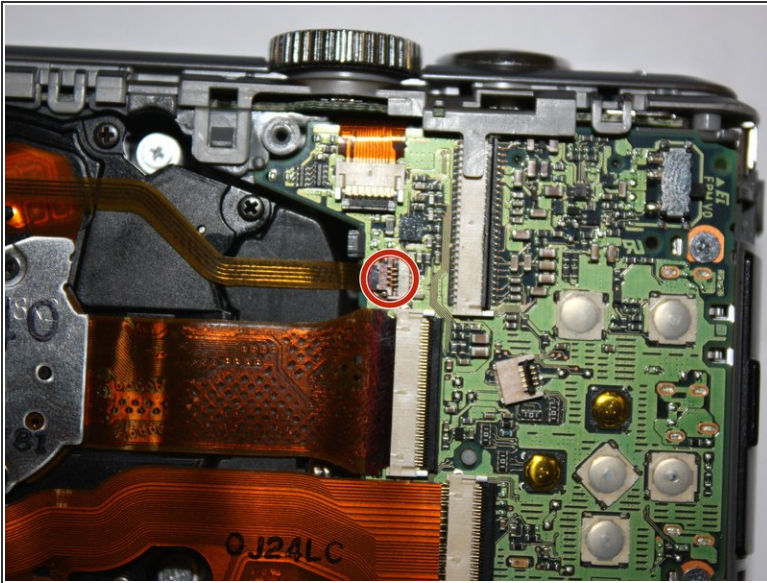
- Unscrew the three silver 1.0 mm screws with a Phillips #000 screwdriver.
- Use the tip of the spudger to disengage the metal tab.
- Carefully lift the shield away from the motherboard.

Step 9



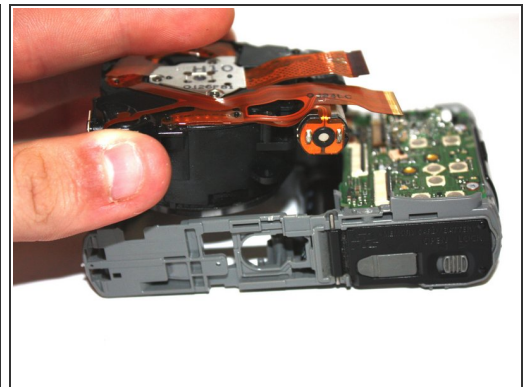
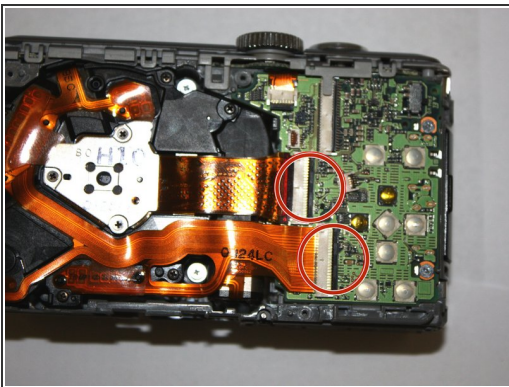
- Insert the tip of the spudger into the center hole of the tripod mount.
- Apply force in the direction facing away from the button.
- Carefully lift the tripod mount out of the camera body.

Step 10



- Use the spudger to flip up the brown tab on the motherboard and carefully unseat the ribbon cable.
- Insert the tip of the spudger into the hole on the daughterboard.
- Apply upward force to remove the daughterboard from the main case.

Step 11



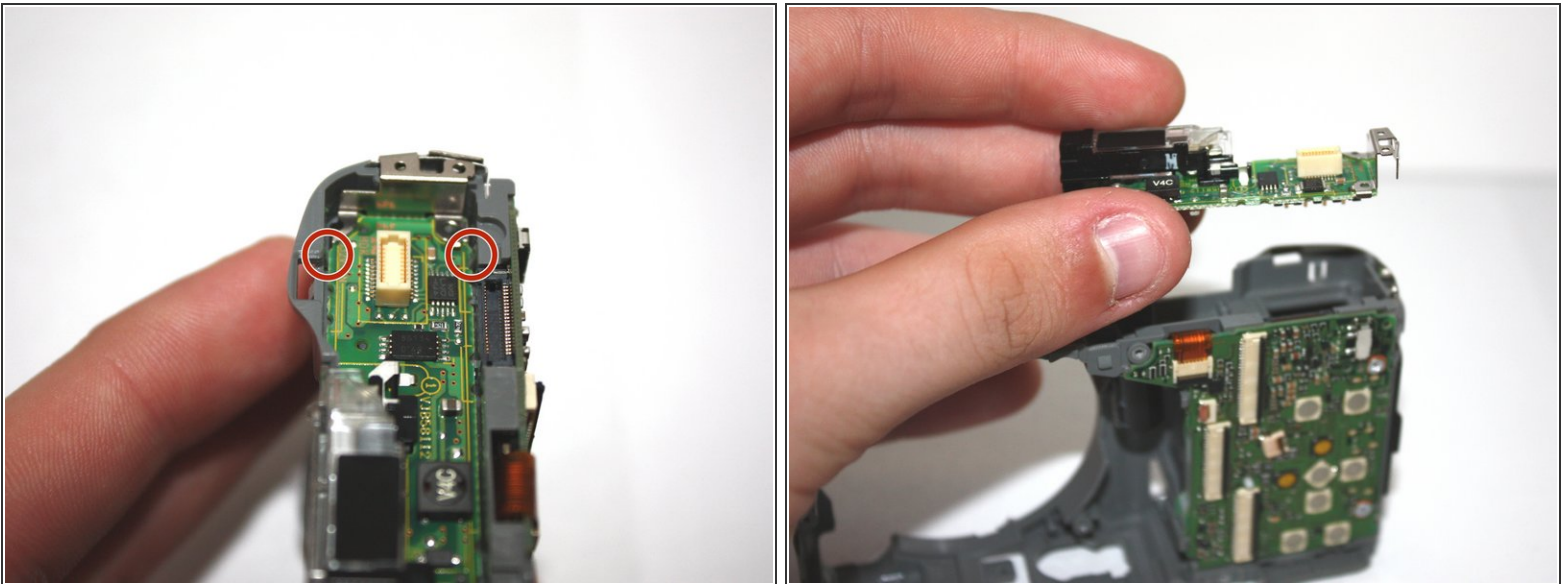
- Use the spudger to flip up the two tabs on the motherboard and carefully unseat the ribbon cables.
- Use the Phillips #000 screwdriver to remove the three 1.0 mm silver screws.
- Carefully lift the lens assembly out of the camera.

Step 12



- Use the tip of the spudger to disengage the tab on the back of the camera.
- Use the tip of the spudger to disengage the two tabs on the front of the camera.
- Carefully lift the top assembly out of place.

Step 13



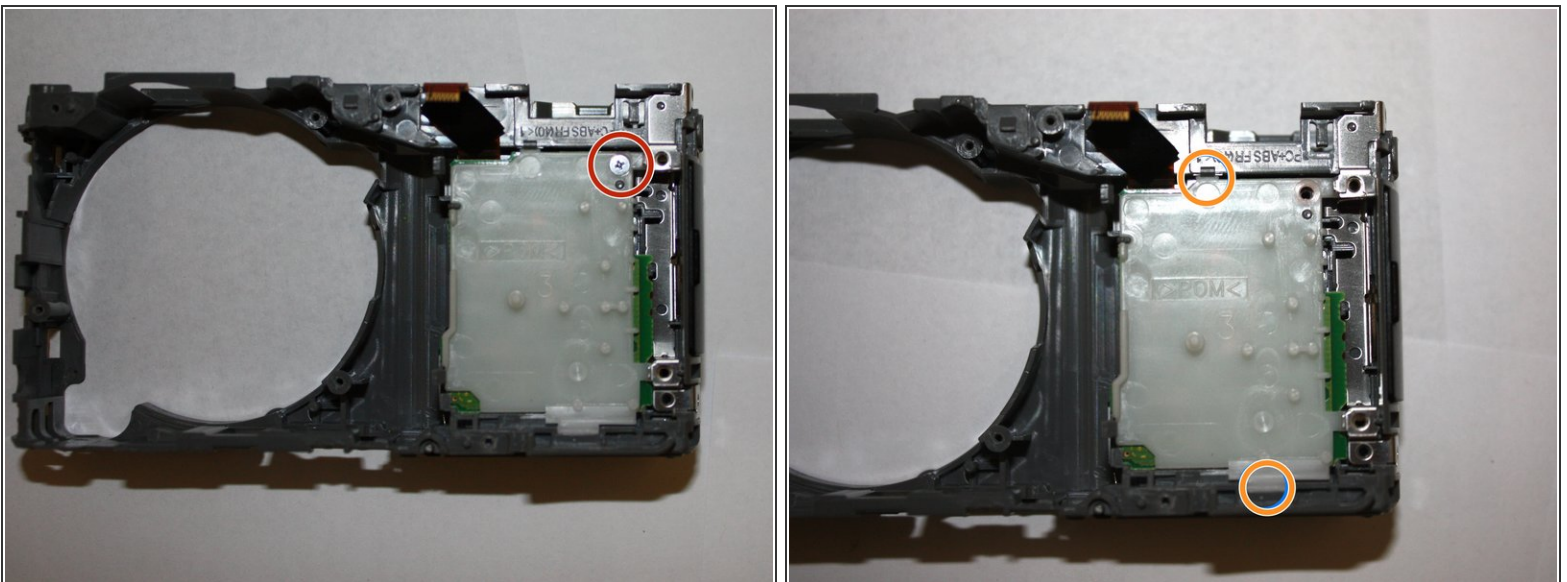
- Use the spudger to disengage the two tabs.
- Carefully lift the flash assembly out of place.

Step 14



- Use the tip of the spudger to flip up the tab to unseat the ribbon cable.
- Unscrew the two silver 1.0 mm screws with a Phillips #000.
- Use the tip of the spudger to disengage the two plastic tabs, and carefully lift the motherboard out of place.

Step 15



- Unscrew the one silver 1.0 mm screw with a Phillips #000 screwdriver.
- Use to tip of the spudger to disengage the plastic tab, then carefully lift the plastic shield out of place.

Step 16



- Carefully lift the SD card reader assembly out of place.

To reassemble your device, follow these instructions in reverse order.