



# Panasonic Lumix DMC-ZS6 Top Assembly Replacement

This guide will help users take out faulty or damaged buttons on the top of a Panasonic Lumix DMC-ZS6 camera.

Written By: Derrick Thompson



## INTRODUCTION

This step by step guide will help you replace a faulty top assembly without damaging any of the other components on the camera.



### TOOLS:

- [Phillips #000 Screwdriver](#) (1)
  - [1.5 mm Flathead Screwdriver](#) (1)
  - [2.0 mm Flathead Screwdriver](#) (1)
-

## Step 1 — Top Assembly



- Remove the battery and the SD card.

## Step 2



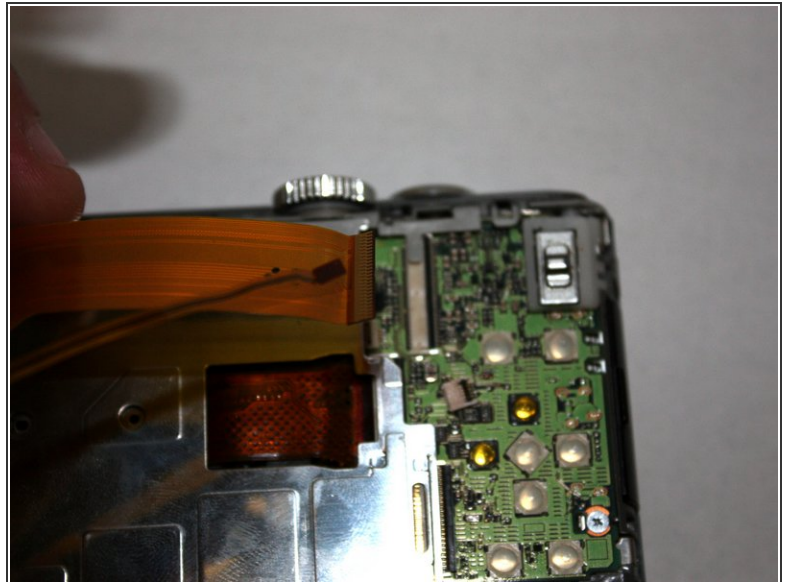
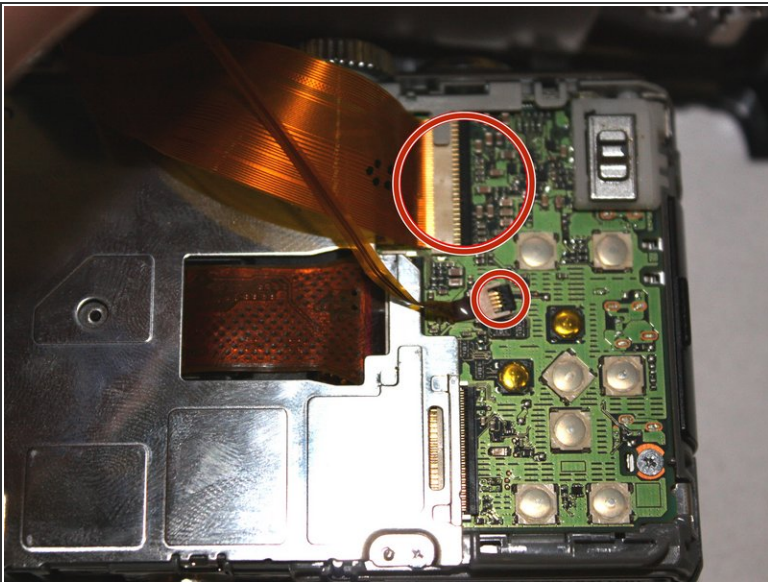
- Remove the two bottom 1.0 mm screws with a Phillips #000 screwdriver.
- Remove the two 1.0 mm screws on the left with a Phillips #000 screwdriver.
- Remove the two 1.0 mm screws on the right with a Phillips #000 screwdriver.

### Step 3



- Carefully separate the back of the camera from the main body.
- ⚠ Do not apply excessive force. The LCD is connected by ribbon cables that can be easily damaged.

### Step 4



- Use the tip of a spudger to flip up the black tabs on the ribbon cables.
- Pull the ribbon cables gently to unseat them.



## Step 5



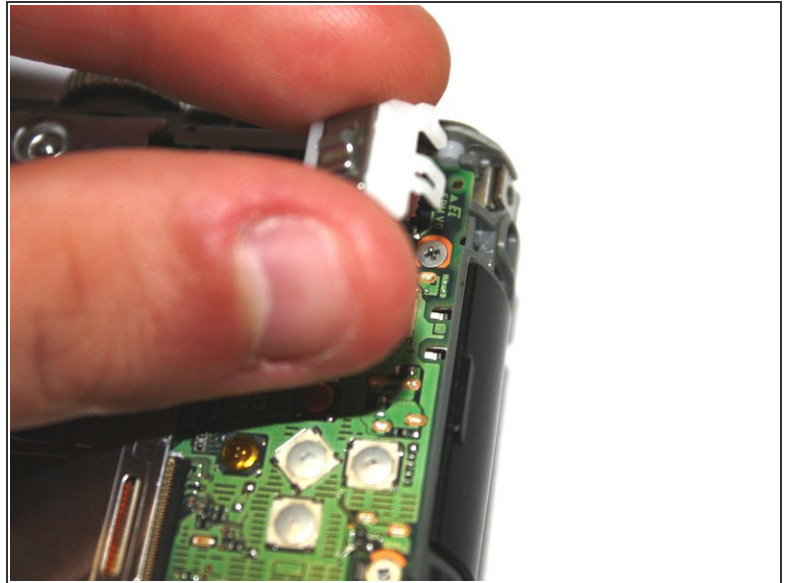
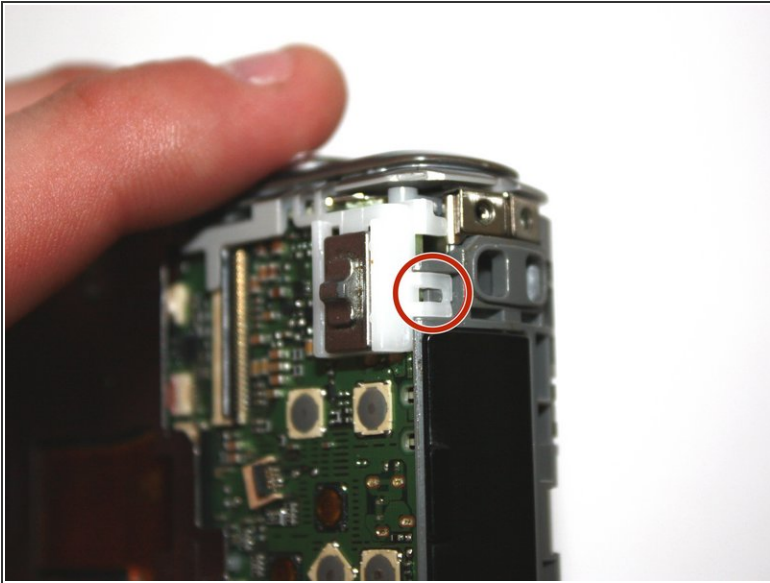
- Remove the two 1.0 mm screws on the right with a Phillips #000 screwdriver.
- Remove the two 1.0 mm screws on the left with a Phillips #000 screwdriver.
- Remove one 1.0 mm screw from the bottom with a Phillips #000 screwdriver.

## Step 6



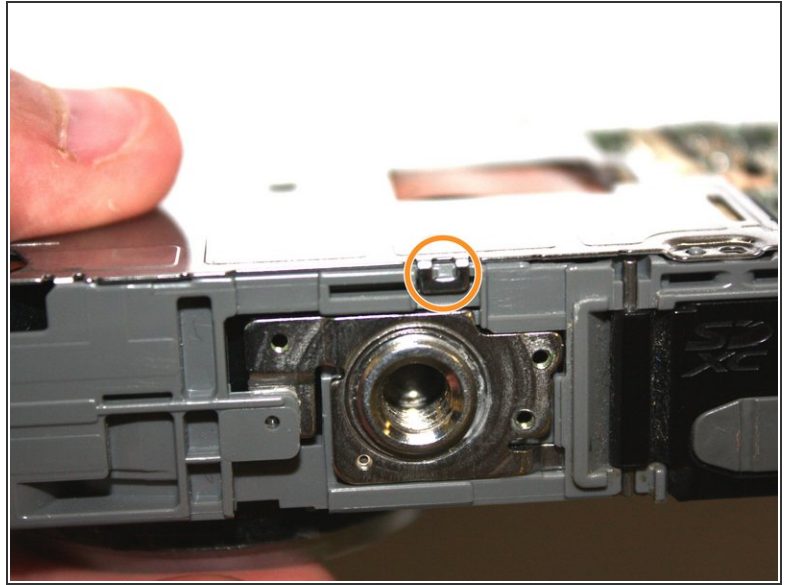
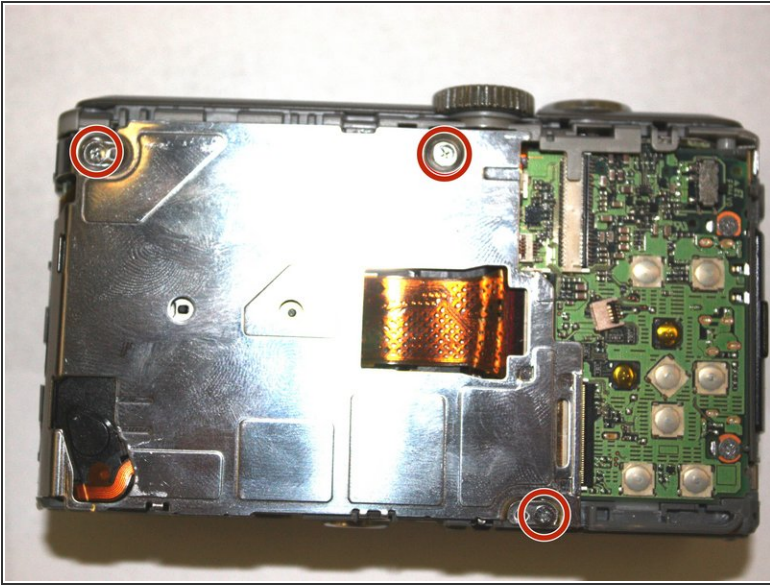
- Carefully separate the front of the camera from the main body.

## Step 7



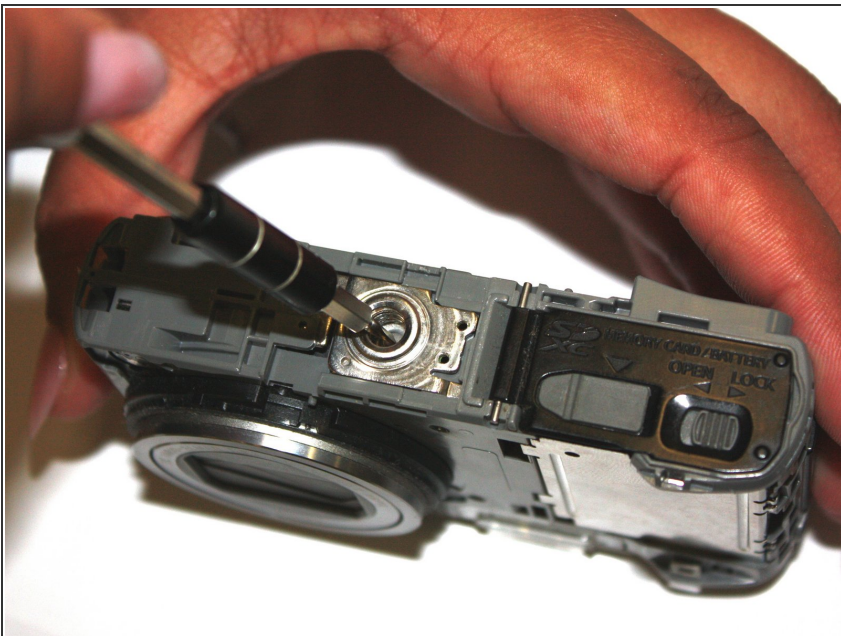
- Use the tip of the spudger to disengage the plastic tab.
- Carefully lift the selector switch away from the motherboard.

## Step 8



- Remove three 1.0 mm screws with a Phillips #000 screwdriver.
- Use the tip of the spudger to disengage the metal tab. Carefully lift the shield away from the motherboard.

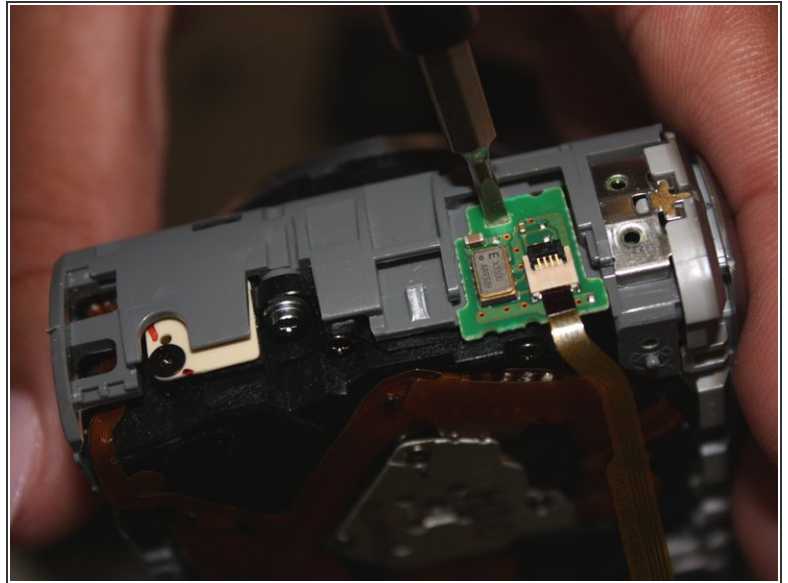
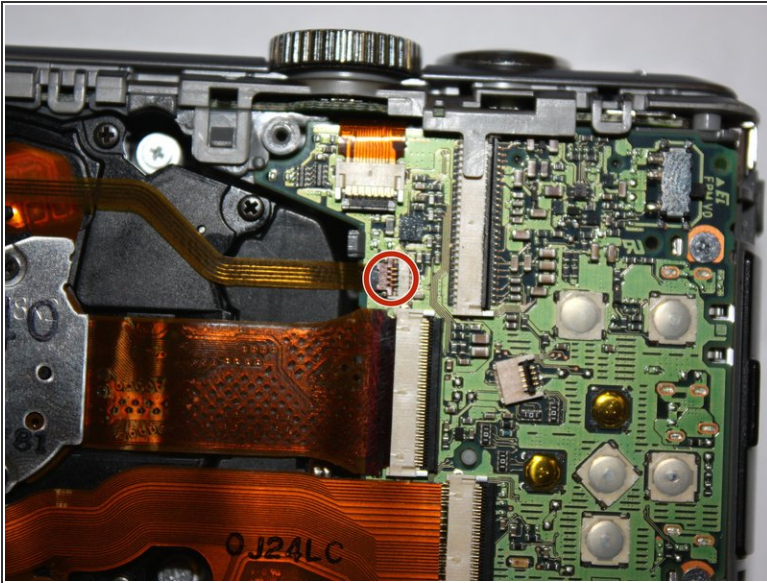
## Step 9



- Insert the tip of the spudger into the center hole of the tripod mount. Apply force in the direction facing away from the button.
- Carefully lift the tripod mount out of the camera body.

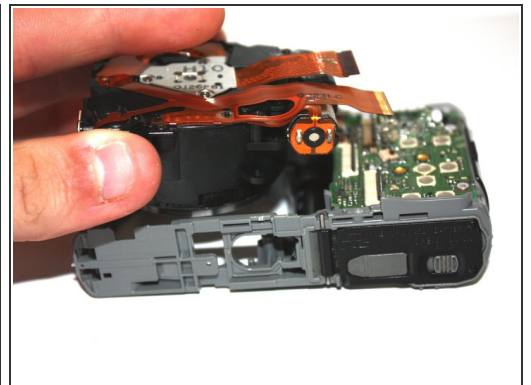
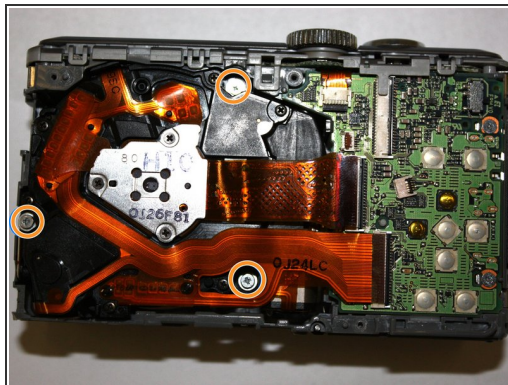
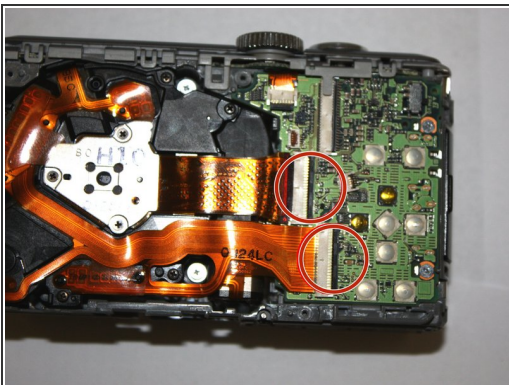


## Step 10



- Use the spudger to flip up the brown tab on the motherboard. Carefully unseat the ribbon cable.
- Insert the tip of the spudger into the hole on the daughterboard. Apply upward force to remove the daughterboard from the main case.

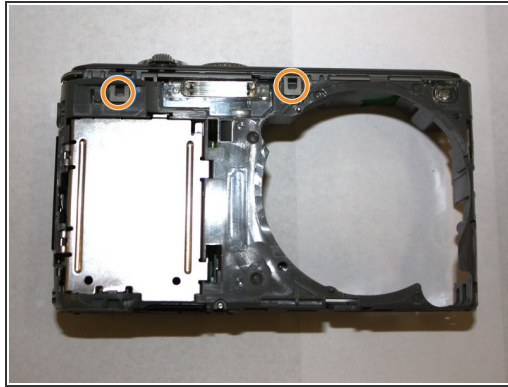
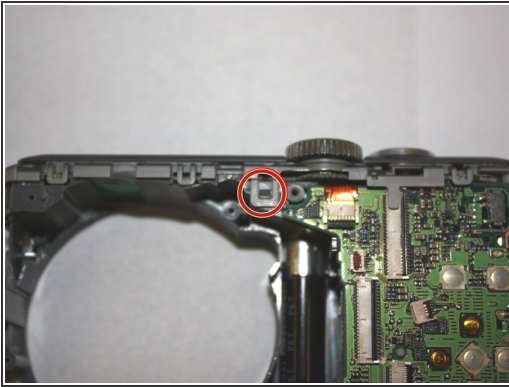
## Step 11



- Use the spudger to flip up the two tabs on the motherboard. Carefully unseat the ribbon cables.
- Use the Phillips #000 screwdriver to remove the three silver screws.
- Carefully lift the lens assembly out of the camera.



## Step 12



- Use the tip of the spudger to disengage the tab on the back of the camera.
- Use the tip of the spudger to disengage the two tabs on the front of the camera.
- Carefully lift the top assembly out of place.

To reassemble your device, follow these instructions in reverse order.