



Panasonic Lumix DMC-ZS8 LCD Display Screen Replacement

This guide will help you disassemble your unit and replace your existing damaged LCD.

Written By: Sales Cameraparts4you





TOOLS:

- [Phillips PH000 Screwdriver](#) (1)



PARTS:

- [DMC-ZS8 LCD Display Part VYK4U15](#) (1)

LCD Display Only

Part VYK4U15 No window plate

Step 1 — Removing External Screws



- Remove Battery and Strap from unit.
- Remove the 3 screws from the bottom
- Remove screws from both sides of unit (4 screws total)

Step 2 — Removing the Side Panels



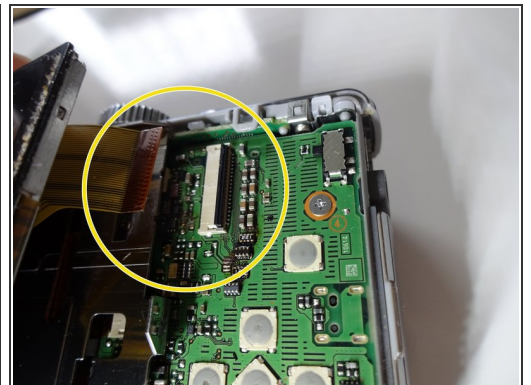
- Remove both side panels from unit. You can pry them off with your finger nail or a spudger

Step 3 — Removing the Rear Cover



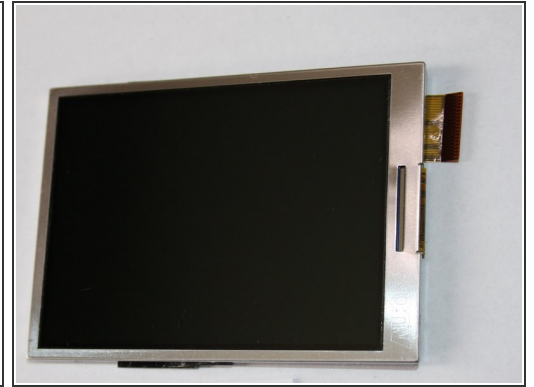
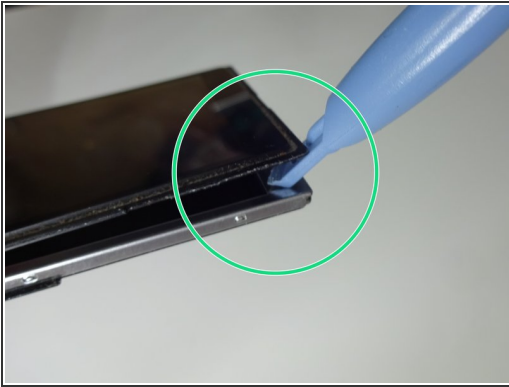
- Pry off rear cover. Make sure LCD remains in place.
- ⓘ There is a thin film of adhesive attaching the LCD to the rear cover. It releases easily with a little pressure. If necessary hold the LCD in place while removing the rear cover.

Step 4 — Removing the LCD



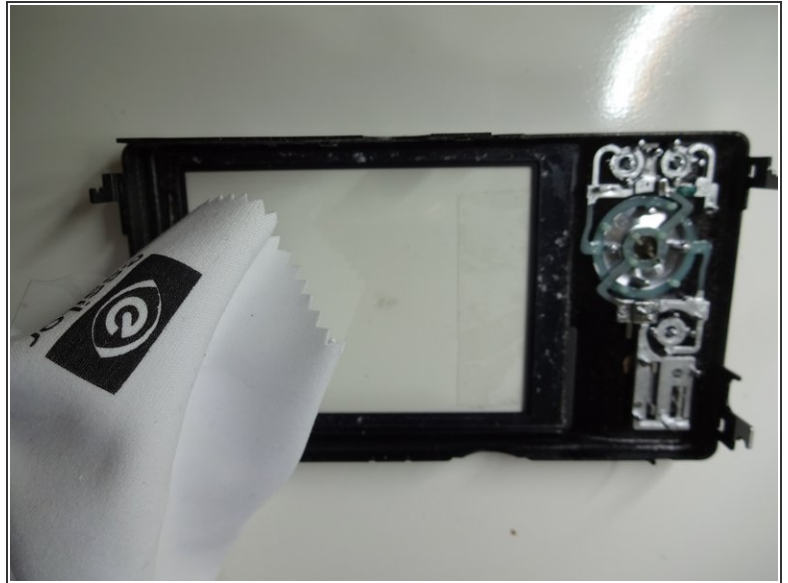
- Release the Ziff clamp holding the LCD cable. 1st photo shows clamp in closed position.
- You can use a spudger to release the clamp. You can also use your finger nail, but be careful it is very fragile.
- Remove the LCD Flex from the clamp

Step 5



- You may need to pry off the window plate of your old screen if the new screen doesn't have one.
- If required: Remove the window plate from your old screen if your new LCD doesn't have one. Save this part for re-install.

Step 6 — Clean up Window Plate and Reassemble



- If your new LCD does not come with a window plate: Tape your old window plate in place as shown in the photo. Make sure it lines up properly and fits into the grooves. This makes re-assembly much easier.
- If necessary clean the window plate and LCD with a micro fiber dry cloth. Make sure there is no debris or dust before you re-install. DO NOT use any liquids.
- Now just reverse the steps to re-assemble your camera with the new screen.

To reassemble your device, follow these instructions in reverse order.