



Panasonic Lumix DMC-ZS8 Mounting Bracket Replacement

How to replace a Panasonic Lumix DMC-ZS8 mounting bracket.

Written By: Trevor Meyers



INTRODUCTION

Most cameras have mounting brackets on the bottom side of the camera that allow the user to attach the camera to a tripod or other mounting device. These mounting brackets are very easy to cross thread or strip. This guide will help you replace the mounting bracket of the camera.



TOOLS:

- [Tweezers](#) (1)
-

Step 1 — Mounting Bracket



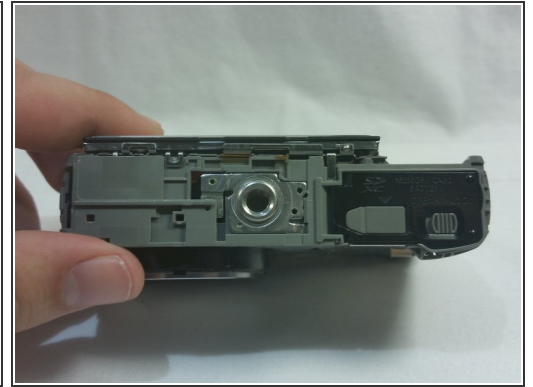
- Remove the side panels by unscrewing the Phillips head screws on both sides of the camera.

Step 2



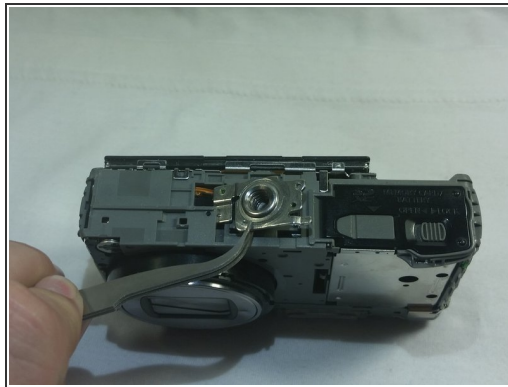
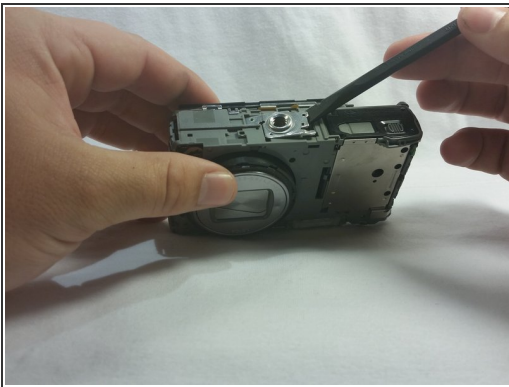
- Remove the back panel by unscrewing the two Phillips head screws on the bottom of the camera towards the back.
- Lift the back panel from the camera and set it aside.

Step 3



- Unscrew the Phillips head screw shown in the picture to remove the front panel.
- Remove the front panel to expose the bracket at the bottom of the camera.

Step 4



- Pry the right side of the bracket up to allow you to grab the bracket with tweezers.
- Grab the bracket with tweezers and slide it toward the battery door to remove it from the frame of the camera.

To reassemble your device, follow these instructions in reverse order.