



Panasonic Lumx DMC-ZS19 Capture Button Replacement

The string of buttons on the top of the camera are all connected to the same motherboard. This guide will show users how to replace these buttons.

Written By: Patrick Thoennissen





TOOLS:

- [Phillips #00 Screwdriver](#) (1)
- [iFixit Opening Tools](#) (1)



PARTS:

- [Panasonic Lumix DMC-ZS19 User-Interactive Buttons](#) (1)

Step 1 — LCD Screen



- Locate the pair (2) of screws on each side of the camera and remove them. Then locate the pair (2) of screws on the bottom of the camera, located on each side of the tripod screw-in area, and remove them.

Step 2



- Using the plastic prying tool, remove the cover of the camera that is on the same side as your LCD screen. This cover should come off relatively easily, and will expose the motherboard that the screen is connected to.

Step 3



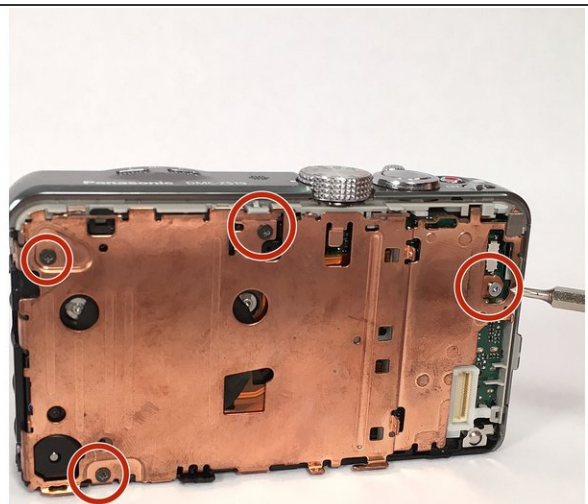
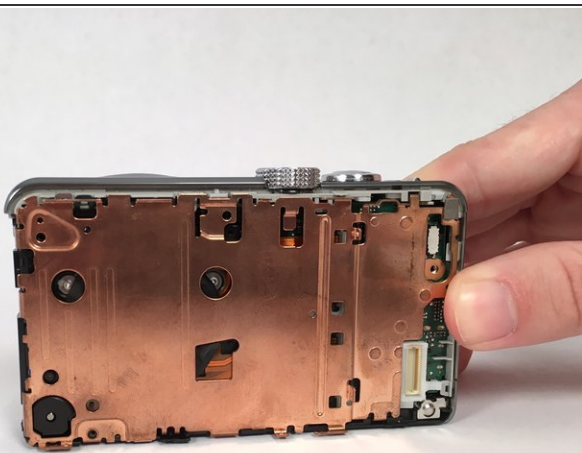
- Disconnect the motherboard that the LCD screen is connected to from the main motherboard.

Step 4



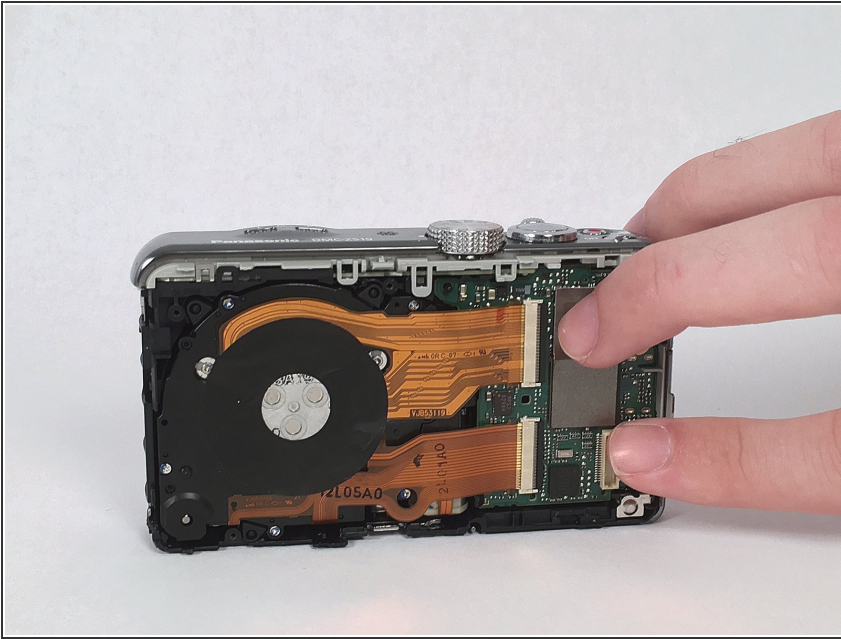
- Using your hand, follow the two data-strips that connect the LCD screen to the motherboard and unclip them. Once the data-strips are unclipped, remove them from the motherboard and the screen will be free.

Step 5 — Lens



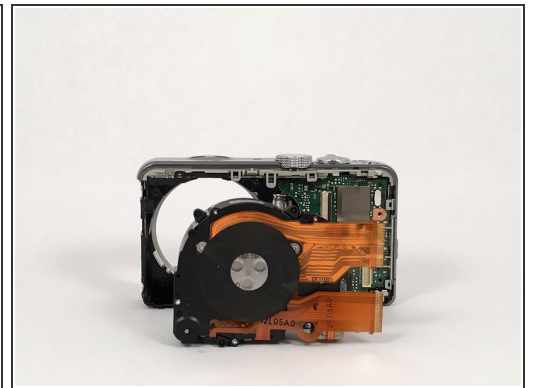
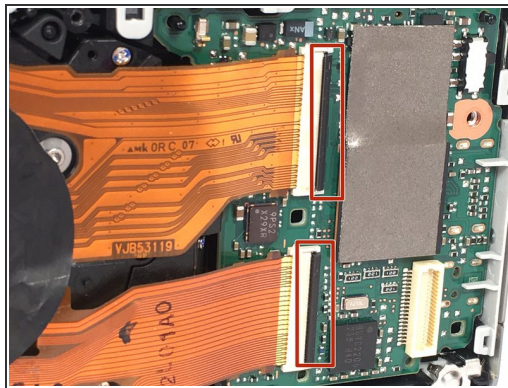
- After the screen has been removed, the main motherboard is directly underneath it. There is a bronze, metal separation piece that separates the main motherboard from the one connected to the lens. This metal piece is held in with 3 screws. Remove these 3 screws and the metal piece will be free.

Step 6



- Once the bronze metal plate is removed, the main motherboard will be exposed. There is a plastic riser (it looks like a lowercase "b" on the right side of the camera) that separates the metal plate from the motherboard. Remove this plastic riser.

Step 7



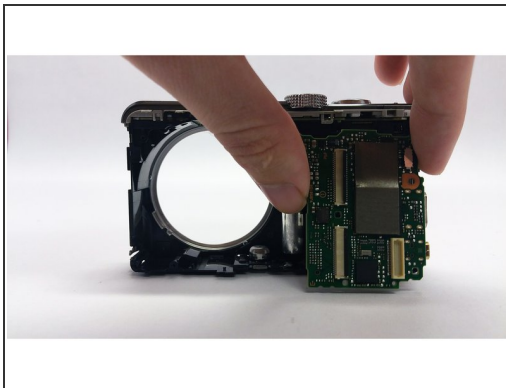
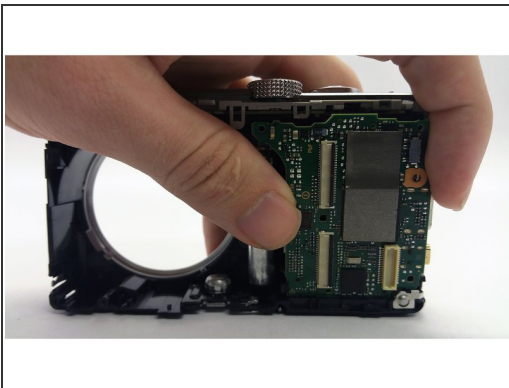
- Once the plastic riser is removed, it is time to remove the lens. To do this, simply follow the data strips (2) that connect the lens to the main motherboard and unclip them by turning the black bar into a position that is perpendicular to the motherboard. Once these clips are open, the data strips and the lens should simply slide out.

Step 8 — Motherboard



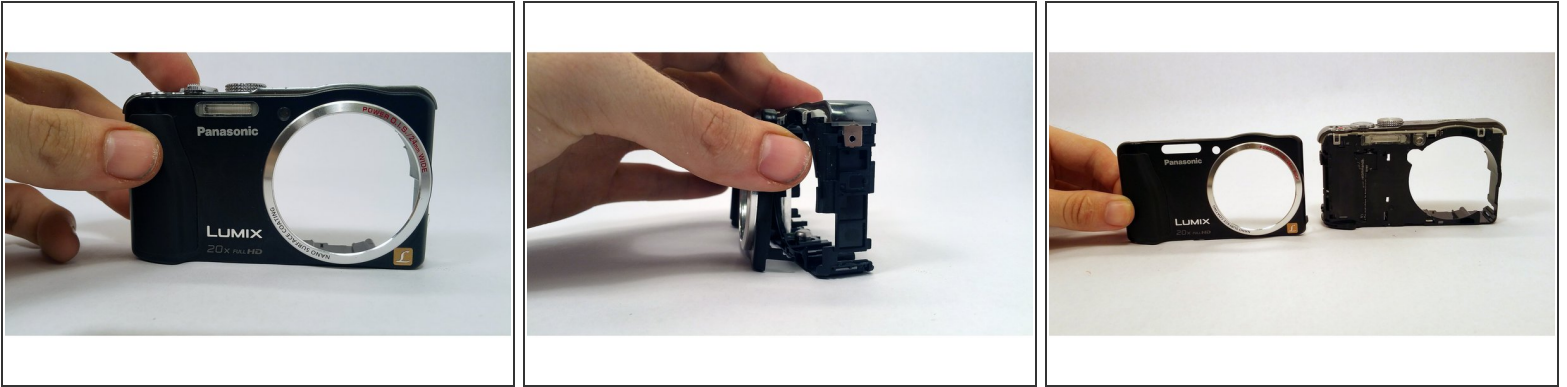
- After the lens has been removed, there is only one screw that holds the main motherboard in place. Remove this screw, located on the right side of the motherboard, and remove it.

Step 9



- Once the screw has been removed, the motherboard should pop right out. If you're having difficulties, use the plastic prying tool.

Step 10 — Capture Button



- Once the motherboard has been removed, flip the camera over and remove the front panel.

Step 11



- After the front panel is removed, the buttons are connected by a simple string of clips. To remove the buttons, find the clip on the back and the two on the front that are connecting the buttons to the shell of the camera. Remove these clips and pull the buttons up from the back at an angle towards the front to remove them.

To reassemble your device, follow these instructions in reverse order.