



Panasonic PV-GS9 Lens Replacement

Written By: Tommy



INTRODUCTION

A guide to removing the lens assembly on the camcorder.



TOOLS:

- [Phillips #00 Screwdriver](#) (1)
 - [iFixit Opening Tools](#) (1)
-

Step 1 — Outer Casing



- Using a plastic opening tool, remove the record/playback and record/power control knobs from the camcorder.

Step 2



- Open the tape compartment.
- Using a #00 Phillips head screwdriver, remove the two 4.5mm screws from the camcorder.

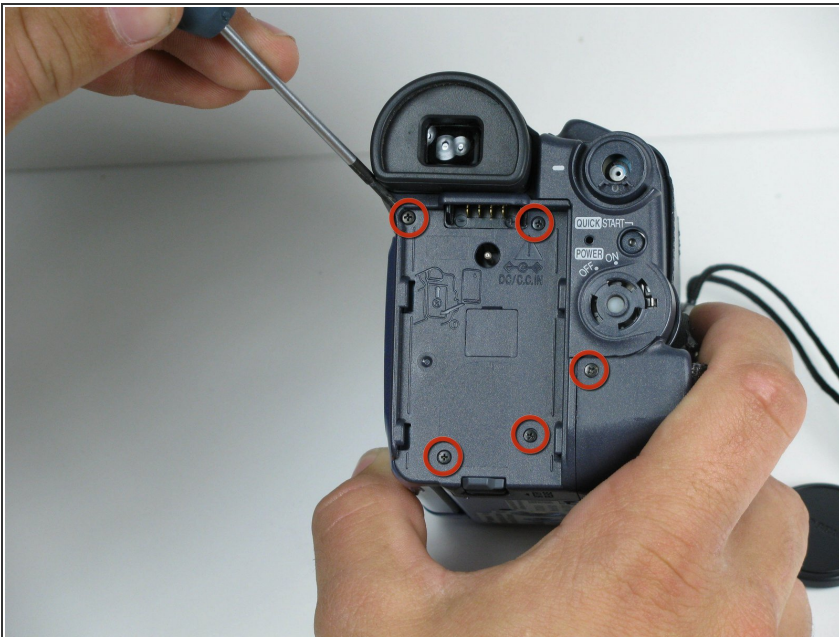
Step 3



- Use a plastic opening tool to remove the gray trim piece from top of the camcorder.

⚠ Take care when removing the trim piece. The plastic parts are fragile and can break easily.

Step 4



- Rotate the camcorder so that the eye piece is facing you.
- Remove the battery.
- Remove the four black 4.5mm screws, sitting behind the battery.
- Remove the 5th screw to the right of the battery dock.

⚠ Be careful not to lose any screws whilst trying to remove them.

Step 5



- Rotate the camcorder so that the tape compartment is facing you.
- Remove the single 4.5mm black screw above the hook for the hand strap.
 - Undoing the strap on one end may help.
- Rotate the camcorder so that the lens is facing you.
- Remove the single 4.5mm black screw from the front panel.

Step 6



- Rotate the camcorder so that the bottom is facing towards you.
- Remove the single remaining 4.5mm black screw from the bottom.
- Remove the four silver 4.5mm screws from the body.



Step 7



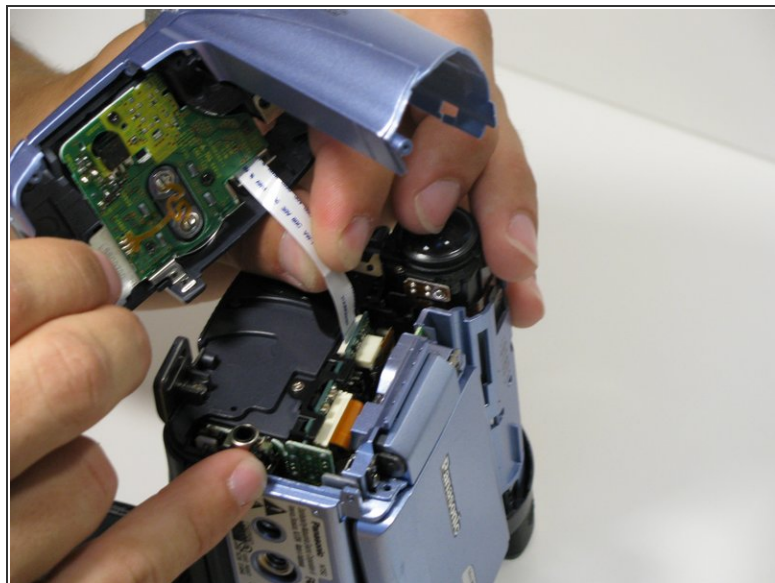
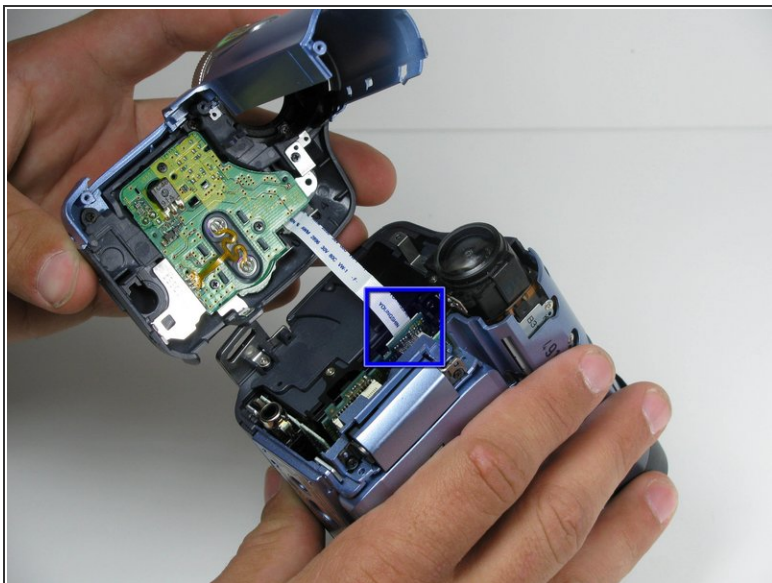
- Open the LCD screen on the side of the camcorder.
- Using a #00 screwdriver, remove the two 4.5mm silver screws located on either side of the hinge of the LCD screen.

Step 8



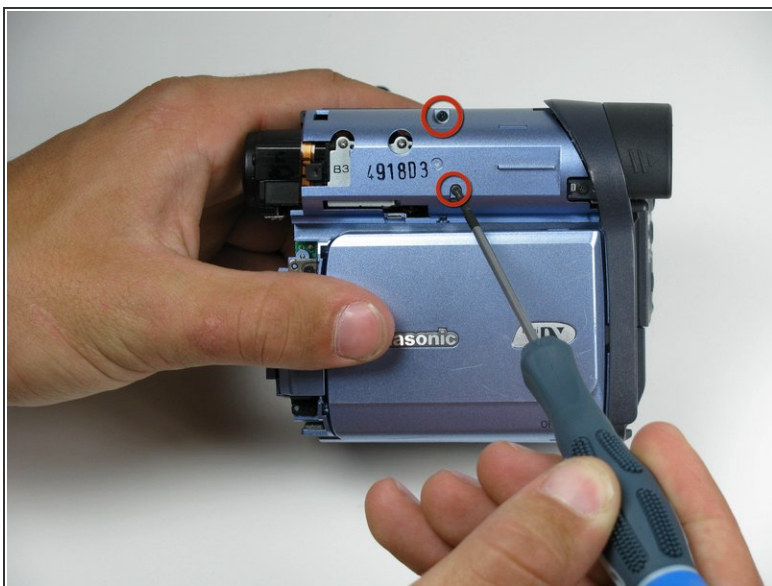
-  Very carefully remove the front cover from the main body of the camcorder.
 - This should come apart with relative ease, however a plastic opening tool may help remove the panel.
-  There is a ribbon cable attached to the front panel and the camcorder body, so be careful not to pull that off when you remove this panel.

Step 9



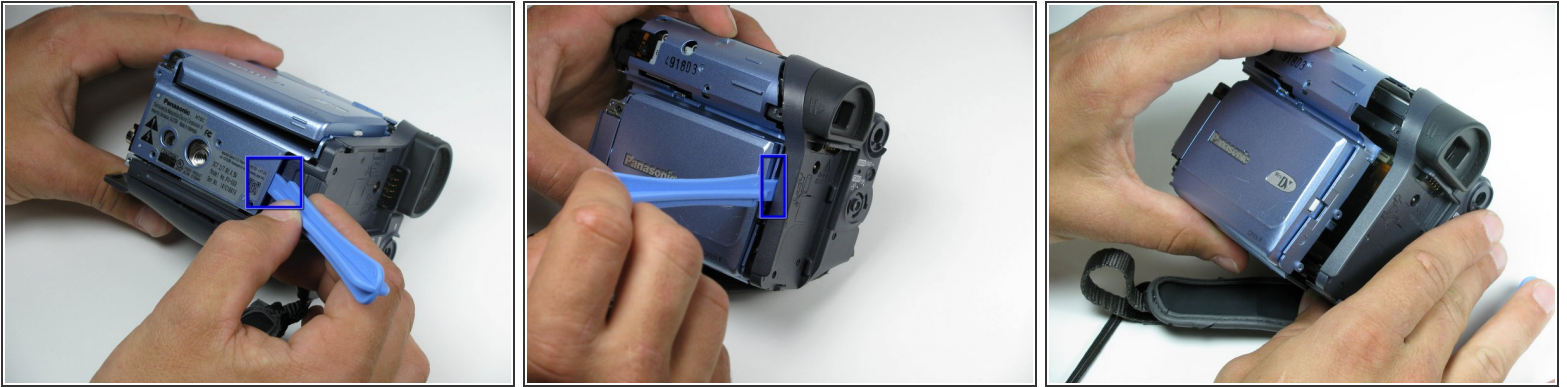
- Using your fingers, carefully pull the ribbon cable away from the logic board.

Step 10 — LCD Panel Removal



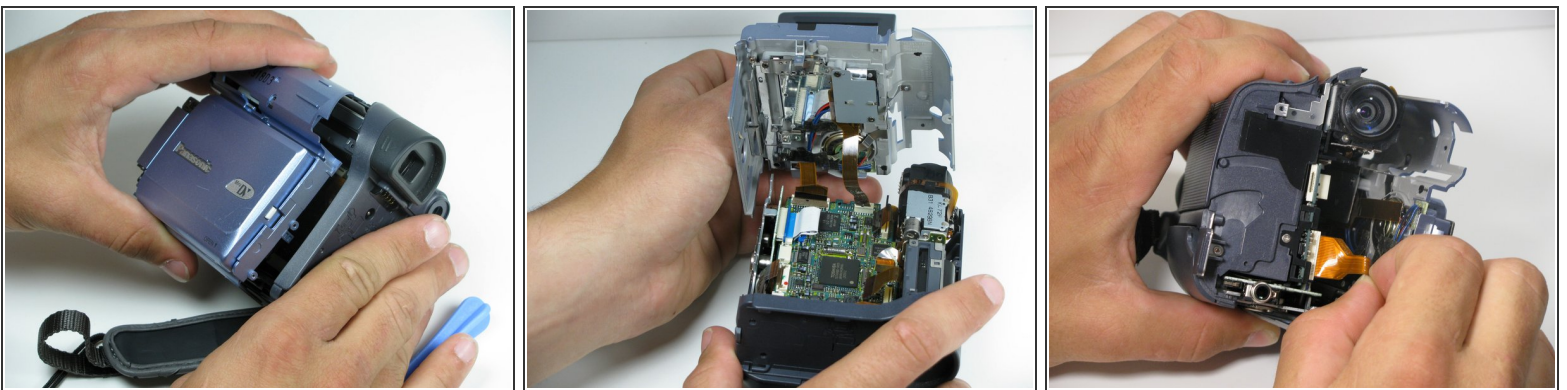
- Remove the indicated 4.5mm screws from the LCD side of the camera.


Step 11



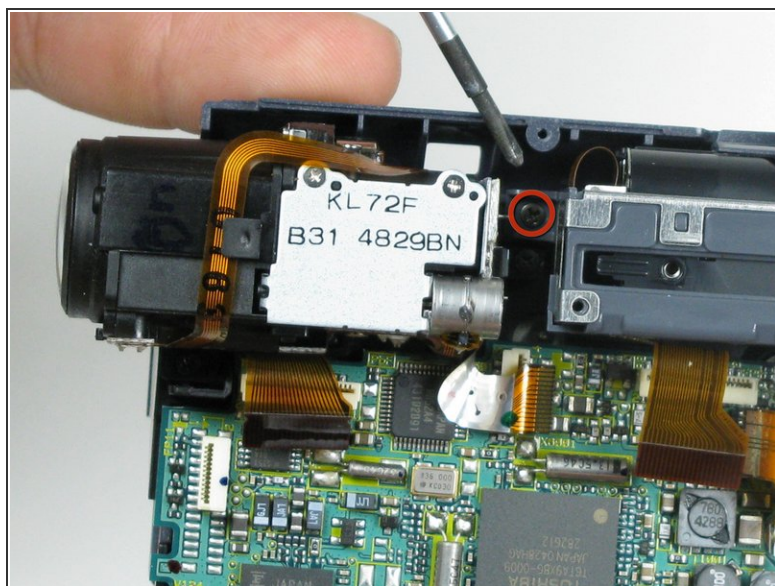
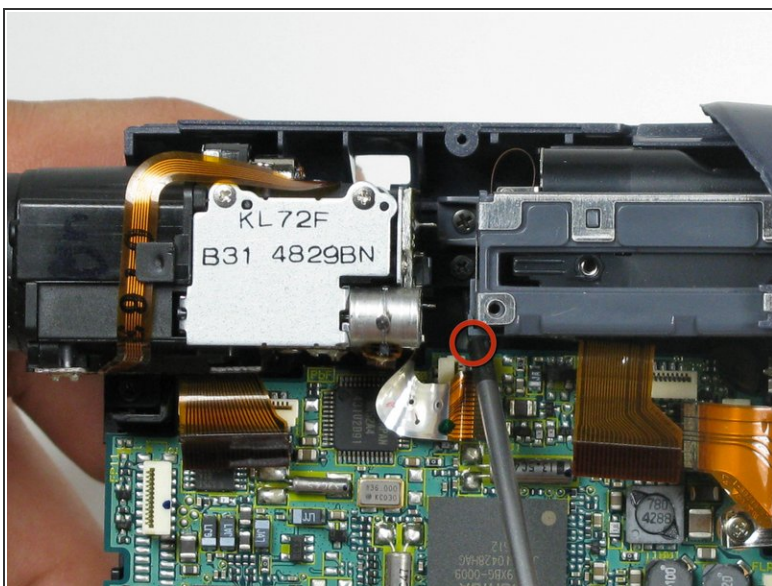
- Place a plastic opening tool under the bottom of the blue panel beneath the camcorder.
 - Using two tools may be useful, if difficult.
- Move the plastic opening tool up the side of the camcorder as shown. Carefully separate the LCD panel from the rest of the camcorder.
- Remove the panel from the camcorder.

Step 12



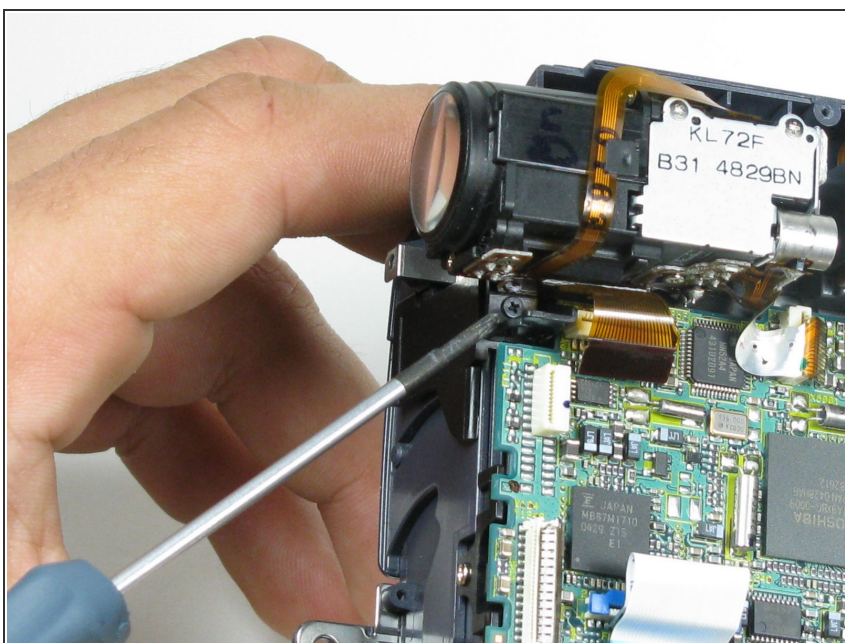
-  Before removing the LCD panel from the camcorder, disconnect the ribbon cables joining the LCD panel to the logic board.
- There may be multiple ribbon cables attached to the same point on the logic board.

Step 13 — Lens



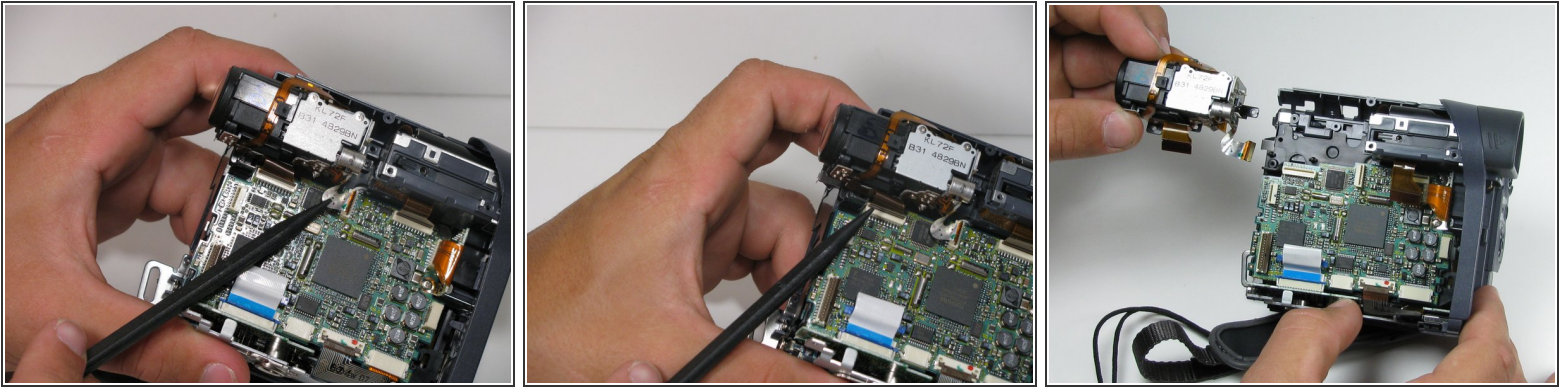
- Using #00 phillips screwdriver, remove two 4.5mm black screws holding lens in place.

Step 14



- Remove third 4.5mm lens mount screw near front of camera.

Step 15



- Careful that both lens ribbon cables are removed from logic board, remove lens.

To reassemble your device, follow these instructions in reverse order.