



Panasonic PV-GS9 outercasing replacement

Written By: Trevor Johnson



INTRODUCTION

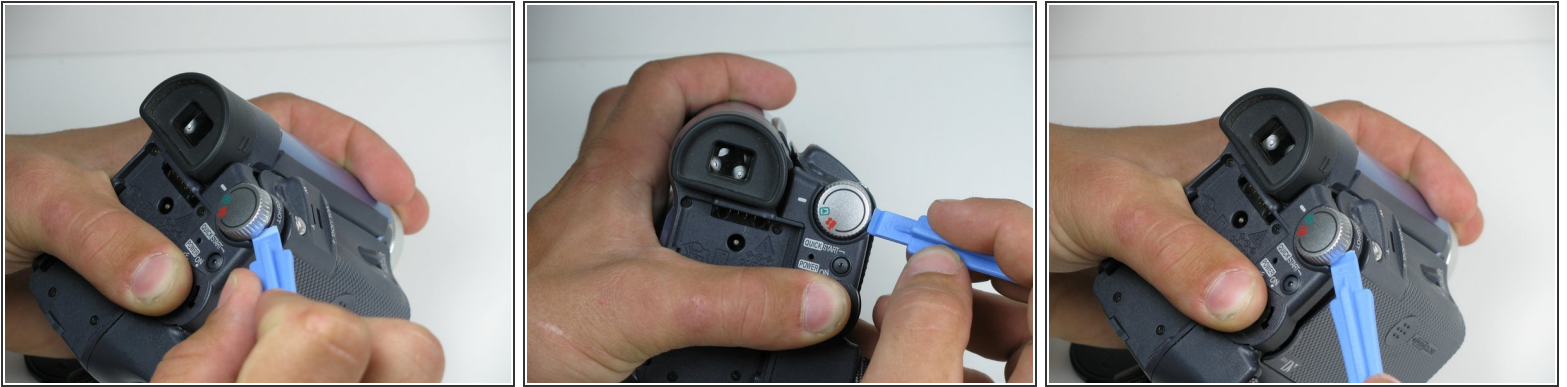
In order to repair the problems that may arise while using the Panasonic PV-GS9 you must disassemble the camcorder entirely. This will allow you to have three large pieces of the camcorder from which all the repairs can be made.



TOOLS:

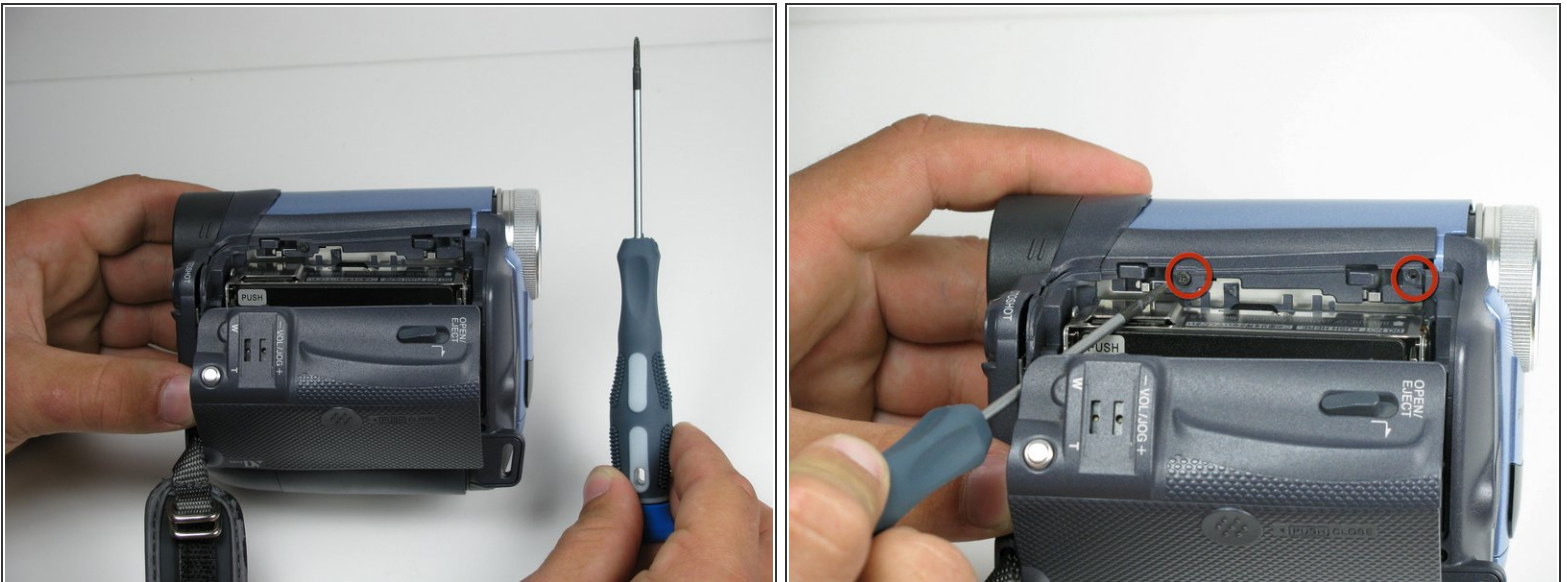
- [Phillips #00 Screwdriver](#) (1)
 - [Spudger](#) (1)
-

Step 1 — Outer Casing



- Using a plastic opening tool, remove the record/playback and record/power control knobs from the camcorder.

Step 2



- Open the tape compartment.
- Using a #00 Phillips head screwdriver, remove the two 4.5mm screws from the camcorder.

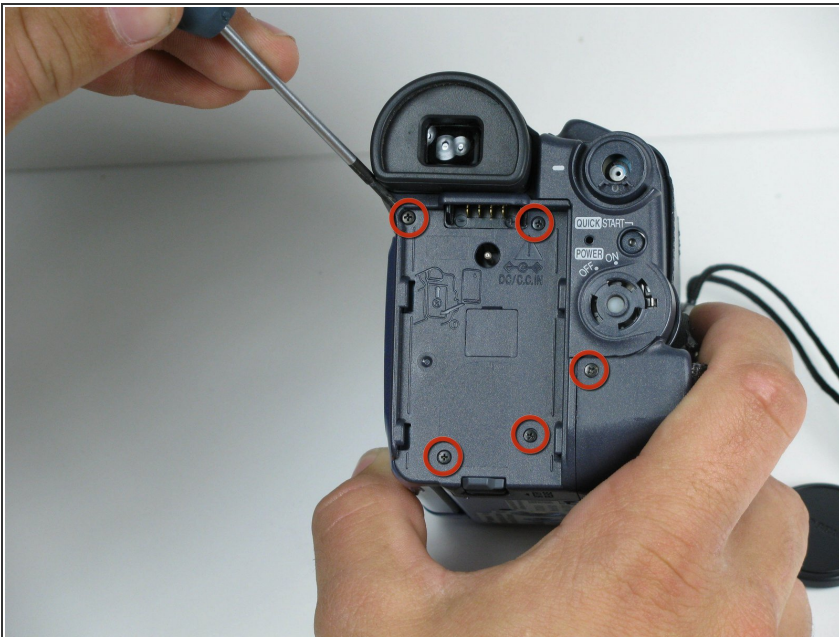
Step 3




- Use a plastic opening tool to remove the gray trim piece from top of the camcorder.

 Take care when removing the trim piece. The plastic parts are fragile and can break easily.

Step 4



- Rotate the camcorder so that the eye piece is facing you.
- Remove the battery.
- Remove the four black 4.5mm screws, sitting behind the battery.
- Remove the 5th screw to the right of the battery dock.

 Be careful not to lose any screws whilst trying to remove them.

Step 5



- Rotate the camcorder so that the tape compartment is facing you.
- Remove the single 4.5mm black screw above the hook for the hand strap.
 - Undoing the strap on one end may help.
- Rotate the camcorder so that the lens is facing you.
- Remove the single 4.5mm black screw from the front panel.

Step 6



- Rotate the camcorder so that the bottom is facing towards you.
- Remove the single remaining 4.5mm black screw from the bottom.
- Remove the four silver 4.5mm screws from the body.

Step 7



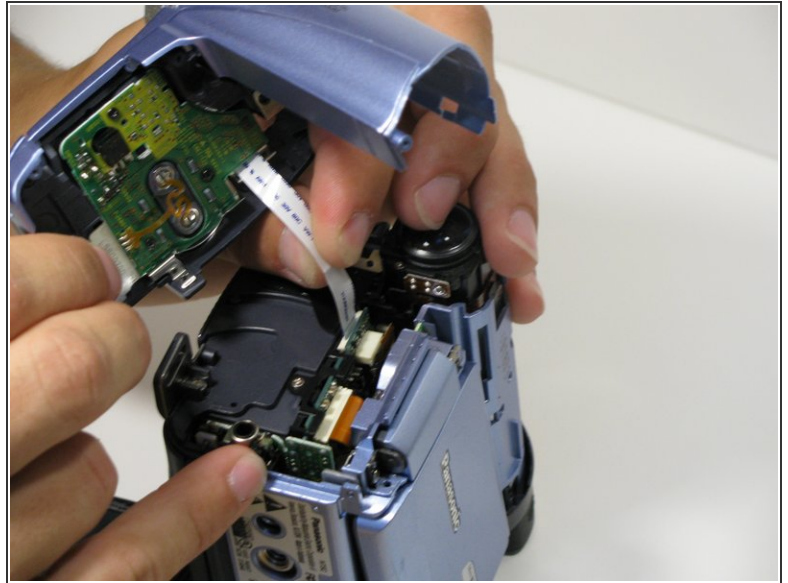
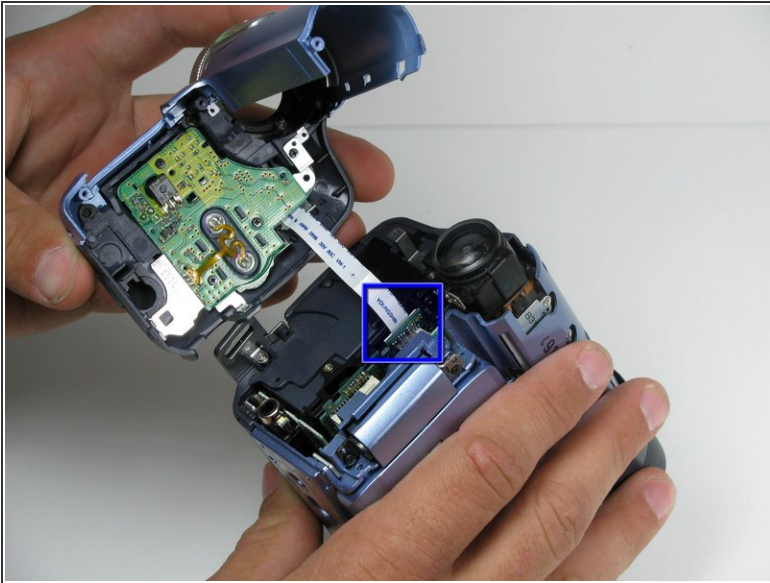
- Open the LCD screen on the side of the camcorder.
- Using a #00 screwdriver, remove the two 4.5mm silver screws located on either side of the hinge of the LCD screen.

Step 8



- ⚠ Very carefully remove the front cover from the main body of the camcorder.
 - This should come apart with relative ease, however a plastic opening tool may help remove the panel.
- ⚠ There is a ribbon cable attached to the front panel and the camcorder body, so be careful not to pull that off when you remove this panel.

Step 9



- Using your fingers, carefully pull the ribbon cable away from the logic board.

To reassemble your device, follow these instructions in reverse order.